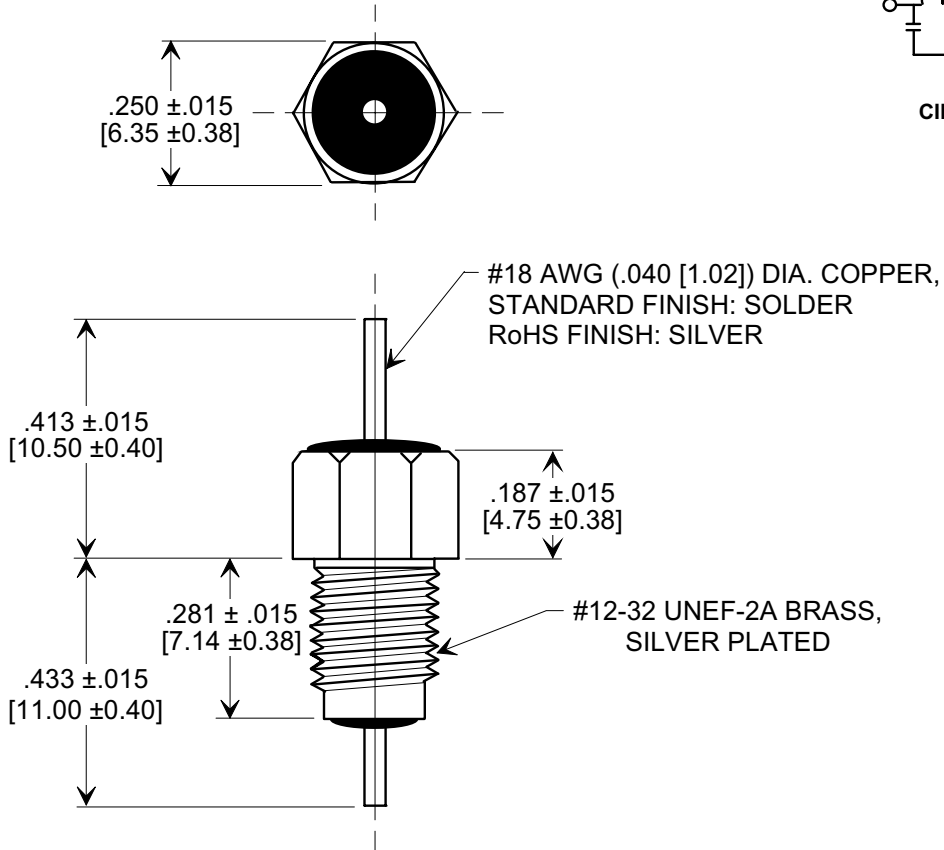
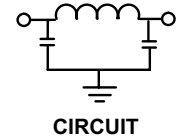
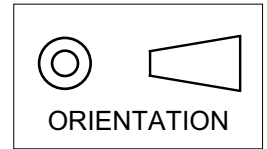


**MARKETING SALES DRAWING**  
**DIMENSIONS IN INCHES - DO NOT SCALE THIS DRAWING**  
**DIMENSIONS IN METRIC - [ ]**

Electrical Testing  
per Tusonix standard  
test plans and Mil-Std-202  
Test Methods.



**NOTES:**

1. MAXIMUM MOUNTING TORQUE 4lb-in (.452 N-m).
2. TUSONIX STANDARD PART NUMBER: 4202-046.  
TUSONIX RoHS COMPLIANT PART NUMBER: 4202-046 LF.  
CUSTOMER MUST SPECIFY STANDARD OR RoHS PART NUMBER WHEN ORDERING.
3. PART MARKING: TRADEMARK AND VARIATION NUMBER ON HEX FLATS.  
STANDARD PART: BLACK INK. RoHS PART: GREEN INK.

CAP. (pF)	WORKING VOLTAGE (Vdc)		CURRENT (Idc)	I.R. MIN. @ 100 (VDC.)	DIELECTRIC WITHSTANDING VOLTAGE	MINIMUM NO LOAD INSERTION LOSS (dB) AT 25°C PER MIL-STD -220			
	+85°C	+125 °C				10 MHz	100 MHz	1 GHz	10 GHz
2500/ 5000	500	350	15 A	10 G	1200 VDC FOR 2 SEC.	5	50	70	70

<b>REVISION RECORD</b> Original Release C.O. 19990913-1-03 ADDED NOTES 2, 3 & IR. S.M. 05-19-05 <b>20050503-6-24</b>	<b>0</b>	<b>--TOLERANCES--</b> Unless Otherwise Specified DECIMAL ± .031 [0.79] ANGLES ±	Title	
			<b>BUSHING STYLE  EMI FILTER</b>	
		<b>TUSONIX</b> TUCSON, ARIZONA	Drawn S.M. 02-02-99 Approved J.Mc. 02-02-99	Sales 3 X
		<b>A</b>	<b>4202-046</b>	