



Part Number	Package	Application	Last Modified
805-RF246.0M-A	5.0 x 5.0 SMD	IF SAW Filter	Mar. 10, 2007

TYPE :
Low Loss IF SAW Filter



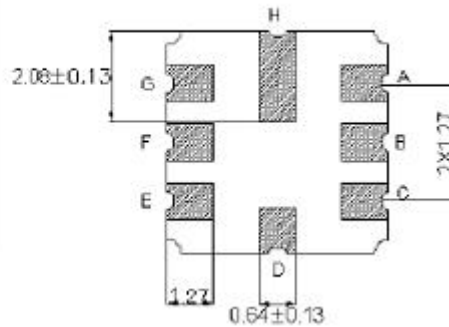
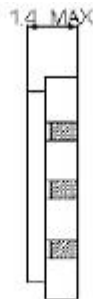
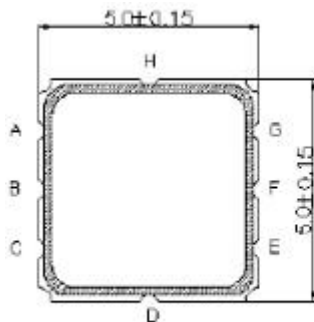
PART NUMBER :
805-RF246.0M-A

OPERATING CONDITIONS / ELECTRICAL CHARACTERISTICS

PARAMETERS	Condition	Minimum	Typical	Maximum	Units
Center Frequency (Fo)	-	-	246.0	-	MHz
Insertion Loss	245.5~ 246.5 MHz	-	1.5	2.5	dB
Amplitude Ripple	245.5~ 246.5 MHz-	-	0.2	0.4	dB
Stop Band Attenuation	100.0~ 226.0	40	60	-	48
	226.0~ 236.0	7	48	-	
	256.0~ 266.0	7	25	-	
	266.0~ 268.0	25	40	-	
	268.0~ 500.0	35	40	-	
Source Impedance (balanced ended)	-	-	200	-	ohms
Load Impedance (single ended)	-	-	50	-	ohms
Operating Tempature	-	-25	-	+80	C
Group Delay Ripple	245.5~ 246.5 MHz	-	15	50	ns
Maxium Input Power	-	-	-	0	dBm

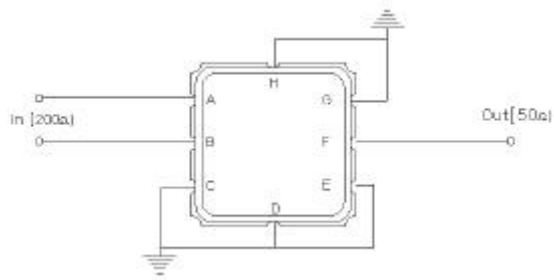
*No Matching Network

PACKAGE OUTLINE (mm)



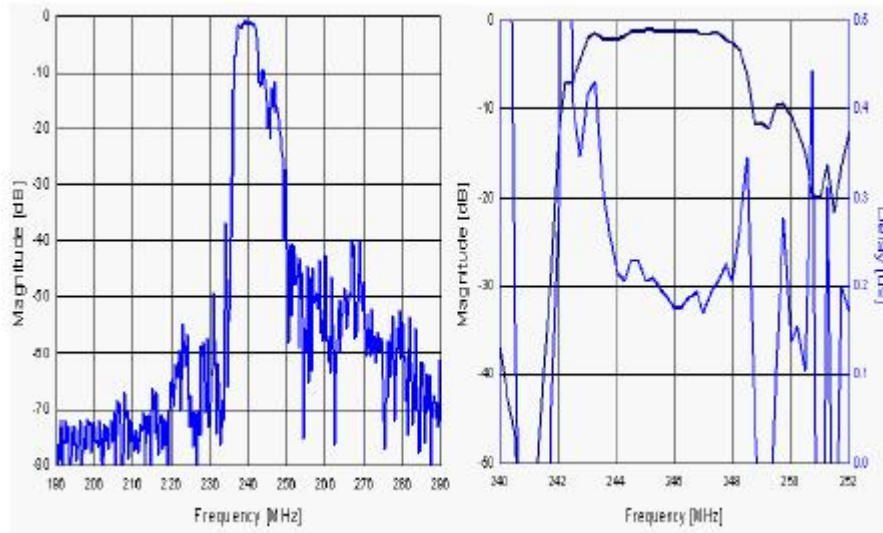
PIN LAYOUT	
A	In
B	In
C	Ground
D	Ground
E	Ground
F	Out
G	Ground
H	Ground

TEST FIXTURE



PIN Descriptions: IN- A,B, OUT- F, GROUND- C,D,E,G,H

FREQUENCY RESPONSE



Oscilent Corporation - CALL **949.252.0522**

Part No.: 805-RF246.0M-A

18195 East McDermott Street . Building D . Irvine . CA 92614 . USA
 Fax: 949.252.0599 . E-Mail: Sales@Oscilent.com