

Features

- Low Ripple
- High Rejection
- Low Loss

Description

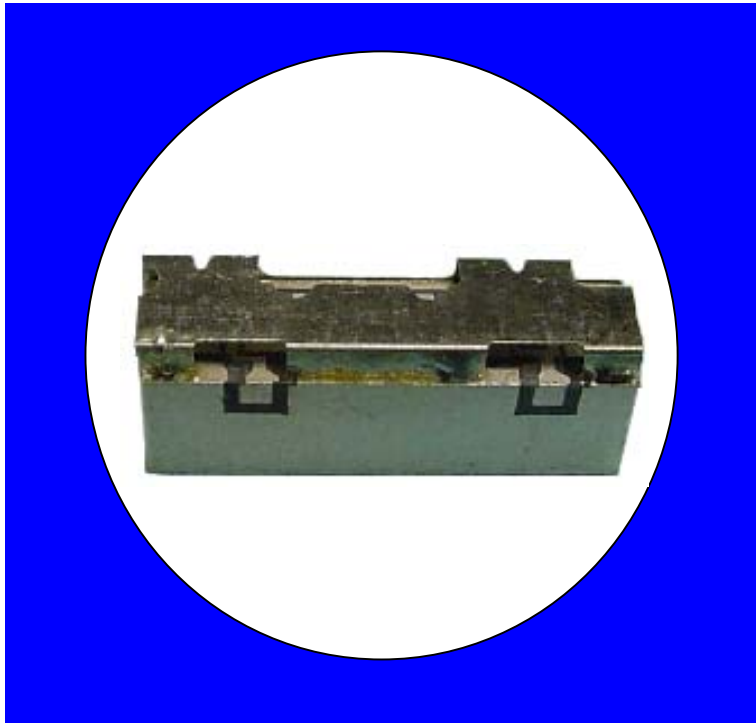
Surface mount, silver (Ag) coated ceramic filter. Developed for use in W-CDMA Infrastructure Applications.

Weight: 4.7 grams typical

Material: Filter is composed of a ceramic block coated with Ag and a shield made of nickel silver plated steel.

Filter complies with RoHS standards.

Electrical Specifications

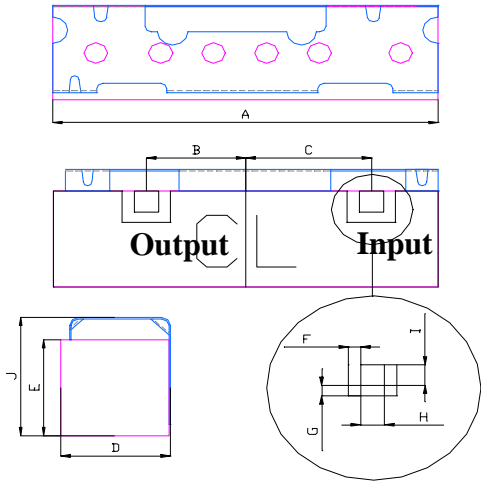


| Parameter | Frequency (MHz) | Typical @ 25°C | Specification @ 25C | Spec. over -40°C to +85°C |
|-------------------------|-----------------|----------------|---------------------|---------------------------|
| Passband Insertion Loss | 1920 - 1980 | 1.9 | 2.2 dB max. | 2.4 dB max. |
| Passband Ripple | 1920 - 1980 | 0.6 | 0.75 dB max. | 0.9 dB max. |
| Passband Return Loss | 1920 - 1980 | 15.0 | 10.0 dB min. | 10.0 dB min. |
| Attenuation: | 1900 | 18.0 | 15.0 dB min. | 15.0 dB min. |
| | 2000 | 18.0 | 15.0 dB min. | 15.0 dB min. |
| | 2110 – 2170 | 40.0 | 35.0 dB min. | 35.0 dB min. |
| Power into any port | | 2 Watt max. | | |

Note: Supplier shall test each filter to the critical electrical specifications of the above table. Any subsequent audits may deviate from in value due to measurement repeatability among different test systems. Such deviations shall not exceed the following limits:

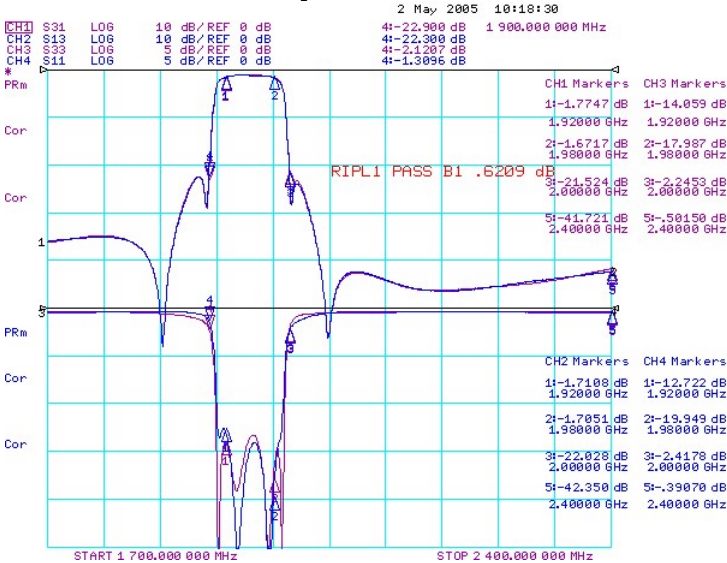
| <u>Specification Allowance</u> | |
|--------------------------------|--------|
| Insertion Loss | 0.1 dB |
| Return Loss | 1.0 dB |
| Stopbands | 1.0 dB |

Mechanical Drawing

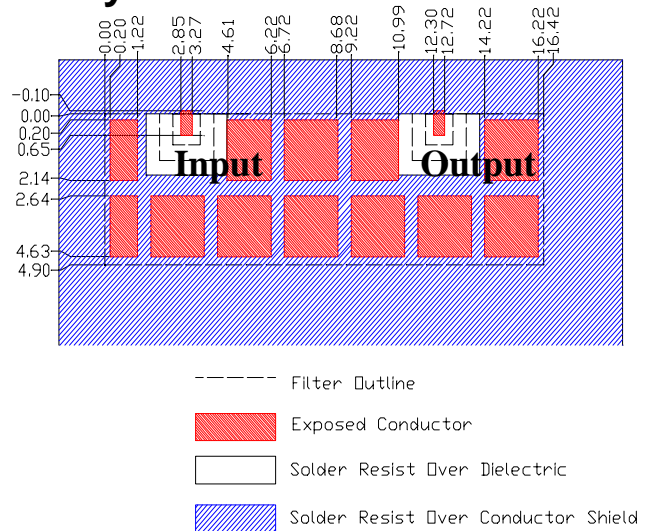


| Dim | Nominal (mm) | Tolerance (mm) +/- or max |
|-----|--------------|---------------------------|
| A | 16.42 | max |
| B | 4.2 | 0.13 |
| C | 5.3 | 0.13 |
| D | 4.85 | max |
| E | 4.9 | 0.13 |
| F | 0.51 | 0.13 |
| G | 0.51 | 0.13 |
| H | 1.02 | 0.13 |
| I | 1.02 | 0.13 |
| J | 6.1 | max |

Electrical response

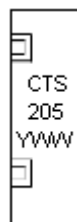
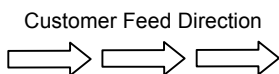
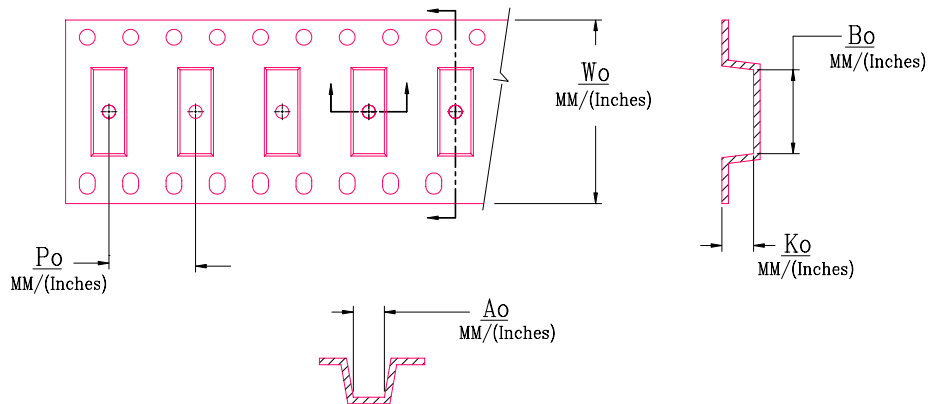


PCB Layout



Packaging and Marking

| DIMENSION | UNITS | SPECIFICATION |
|---------------|-------|---------------|
| REEL DIAMETER | mm | 330 |
| REEL WEIGHT | kg | 3.1 |
| REEL QUANTITY | ea. | 500 |



| MODEL NO. | W_o | A_o | B_o | K_o | P_o |
|-----------|--------------|--------------|--------------|--------------|--------------|
| CER0205 | 24.0/(0.945) | 6.30/(0.248) | 16.7/(0.657) | 5.10/(0.201) | 12.0/(0.472) |