

PLEASE CHECK WWW.MOLEX.COM FOR LATEST PART INFORMATION

Part Number: [0015381026](#)
Status: **Active**
Overview: [cgrid_iii|cgrid_sl_products](#)
Description: 2.54mm (.100") Pitch C-Grid® Shunt Terminal Housings, All Over Tin (Sn), 2 Circuits, with Open End

Documents:

3D Model	Product Specification PS-7859 (PDF)
Packaging Specification (PDF)	RoHS Certificate of Compliance (PDF)
Drawing (PDF)	

Agency Certification

CSA	LR19980
UL	E29179

General

Product Family	Accessories
Series	7859
Component Type	Shunt
Overview	cgrid_iii cgrid_sl_products
Product Name	C-Grid®, C-Grid III™, SL™

Physical

Circuits (Loaded)	2
Color - Resin	Black
Flammability	94V-0
Lock to Mating Part	No
Material - Metal	Phosphor Bronze
Material - Resin	Polyester
Number of Rows	1
Packaging Type	Bag
Temperature Range - Operating	-55°C to +105°C

Electrical

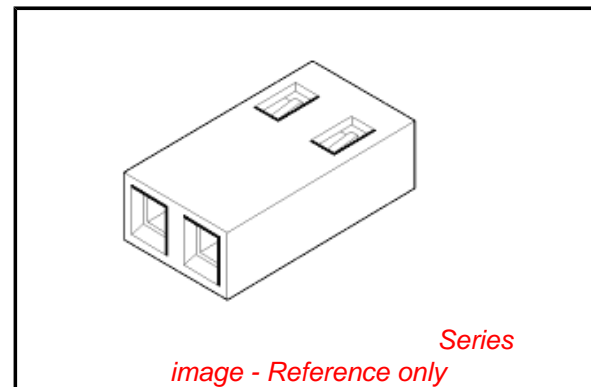
Current - Maximum per Contact	3A
-------------------------------	----

Material Info

Old Part Number	7859-2A164N
-----------------	-------------

Reference - Drawing Numbers

Packaging Specification	PK-70873-0815
Product Specification	PS-7859
Sales Drawing	SDA-7859-2A***N
Test Summary	TS-7859-0001



EU RoHS

ELV and RoHS Compliant
REACH SVHC
 Not Reviewed
Halogen-Free Status

China RoHS



Need more information on product environmental compliance?

Email productcompliance@molex.com
 For a multiple part number RoHS Certificate of Compliance, [click here](#)

Please visit the [Contact Us](#) section for any non-product compliance questions.

Search Parts in this Series

[7859Series](#)

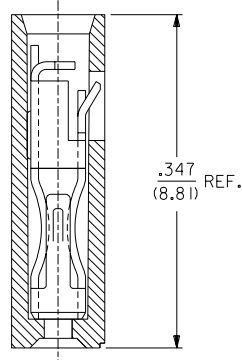
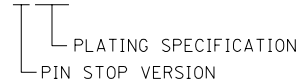
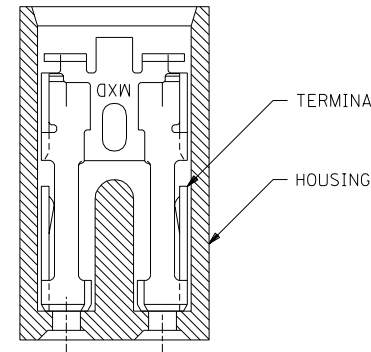
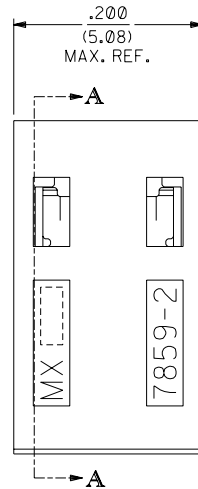
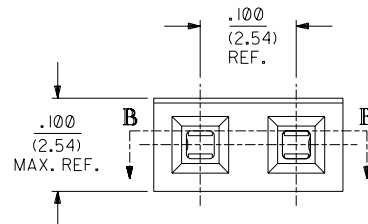
Use With

[70280](#) C-Grid Breakaway Header, [71308](#) C-Grid® Header, [71764](#) C-Grid® Breakaway Header, [42375](#) KK® Breakaway Header, [42377](#) KK® Breakaway Header, [4030](#) KK® Wire-to-Board Header, [42152](#) KK® Wire-to-Board Header

EDP NO.	ENG NO.	FINISH
15-38-1026	A-7859-2A164	TIN OVERALL
15-29-1025	A-7859-2A554	15 GOLD
15-29-1027	A-7859-2A561	30 GOLD

PART IDENTIFICATION:

A-7859-2A***

**SECTION A-A****SECTION B-B****FINISH SPECIFICATION**

- TIN OVERALL - .000150 MINIMUM TIN PLATE OVER
.000050 MINIMUM NICKEL UNDERPLATE.
- 15 GOLD - .000015 MINIMUM GOLD PLATE IN SELECT AREA OVER
.000050 MINIMUM NICKEL UNDERPLATE OVERALL.
- 30 GOLD - .000030 MINIMUM GOLD PLATE IN SELECT AREA OVER
.000050 MINIMUM NICKEL UNDERPLATE OVERALL.

NOTE FOR LEAD FREE CONVERSION:

THE PRIMARY SHIPPING CARTON WILL BE LABELED "COMPLIANT TO ROHS DIRECTIVE 2002/95/EC AND ELV ANNEX II OF DIRECTIVE 2000/53/EC". CARTONS WITHOUT THIS LABEL MAY CONTAIN PRODUCT WITH LEAD.

NOTES:

- MATERIAL;
HOUSING: GLASS FILLED POLYESTER; 94V-0; COLOR: BLACK
TERMINAL: PHOSPHOR BRONZE ALLOY.
- THIS PRODUCT CONFORMS TO MOLEX PRODUCT SPEC. PS-7859.
- TO BE USED WITH .025/(0.64) SQUARE PINS.
- MINIMUM MATING PIN LENGTH: .200/(5.08)
MAXIMUM MATING PIN LENGTH: .270/(6.86)
- PRODUCT IS PACKAGED IN BOXES PER PK-70873-0815.

DIMENSIONS SHOWN (METRIC) INCH	
UNLESS OTHERWISE SPECIFIED TOLERANCES: ANGULAR ± 1/2°	
3 PLACE	± .005
2 PLACE	± .01 ± 0.13
1 PLACE	--- ± 0.25
DRAFT WHERE APPLICABLE MUST REMAIN WITHIN DIMENSIONS	
DRWG. BY: AAB	CHK'D. BY:
APP'D. BY: MJM	SCALE: 10: 1

MFG.	SH.	REV.	LTR.	REVISIONS
▽ = 0	▽ = 0			REVISE ONLY ON CAD SYSTEM
TITLE: SALES ASSY - SHUNT 2-CIRCUIT TERMINAL W/PIN STOP				
MOLEX INCORPORATED		SHEET NO. 1 OF 1	DATE 02/07/91	
LISE,ILL. 60532		U.S.A.		
PART NO. SEE CHART		DRWG. NO. SDA-7859-2A***N		
FILE NAME 57859X1A		THIS DRAWING CONTAINS INFORMATION THAT IS PROPRIETARY TO MOLEX INC. AND SHOULD NOT BE USED WITHOUT WRITTEN PERMISSION		
DA	C			