

PLEASE CHECK WWW.MOLEX.COM FOR LATEST PART INFORMATION

Part Number: [0022433080](#)
Status: **Active**
Description: 2.5 SPOX IDT RECEPTACLE WHITE 8CKT

Documents:

[3D Model](#) [Product Specification PS-42219-0001 \(PDF\)](#)
[Drawing \(PDF\)](#) [RoHS Certificate of Compliance \(PDF\)](#)

Agency Certification

CSA LR19980
 UL E29179

General

Product Family IDT and Solder Connectors
 Series [42219](#)
 Comments Spring Box|Use with 24 AWG solid
 Crimp Quality Equipment Yes
 Product Name SPOX™

Physical

Circuits (Loaded) 8
 Color - Resin Natural
 Durability (mating cycles max) 25
 Flammability 94V-0
 Gender Female
 Glow-Wire Compliant No
 Lock to Mating Part None
 Material - Metal Phosphor Bronze
 Material - Plating Mating Tin
 Material - Plating Termination Tin
 Material - Resin Polyester
 Number of Rows 1
 Packaging Type Bag
 Panel Mount No
 Pitch - Mating Interface (in) 0.098 In
 Pitch - Mating Interface (mm) 2.50 mm
 Plating min: Mating (µin) 100
 Plating min: Mating (µm) 2.50
 Plating min: Termination (µin) 100
 Plating min: Termination (µm) 2.50
 Stackable No
 Temperature Range - Operating 0°C to +75°C
 Termination Interface: Style IDT or Pierce
 Wire Size AWG 24, 26

Electrical

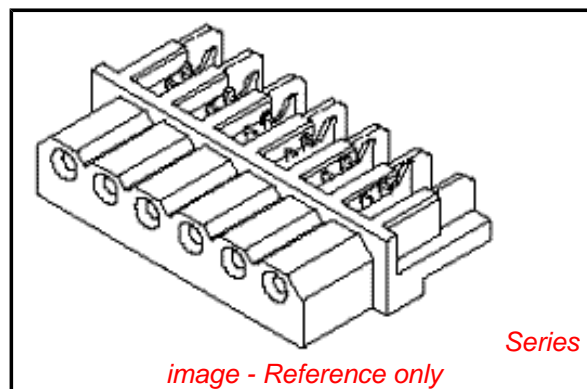
Current - Maximum per Contact 3A
 Voltage - Maximum 250V

Material Info

Old Part Number A4221908A

Reference - Drawing Numbers

Product Specification PS-42219-0001
 Sales Drawing SDA-42219-*



EU RoHS

ELV and RoHS Compliant
REACH SVHC Contains SVHC: No
Halogen-Free Status

China RoHS



Not Halogen-Free
Need more information on product environmental compliance?

Email productcompliance@molex.com
 For a multiple part number RoHS Certificate of Compliance, [click here](#)

Please visit the [Contact Us](#) section for any non-product compliance questions.

Search Parts in this Series

[42219Series](#)

Mates With

Headers, [5267](#) , [42249](#) , [42267](#) , [5268](#)

Application Tooling | FAQ

Tooling specifications and manuals are found by selecting the products below. Crimp Height Specifications are then contained in the Application Tooling Specification document.

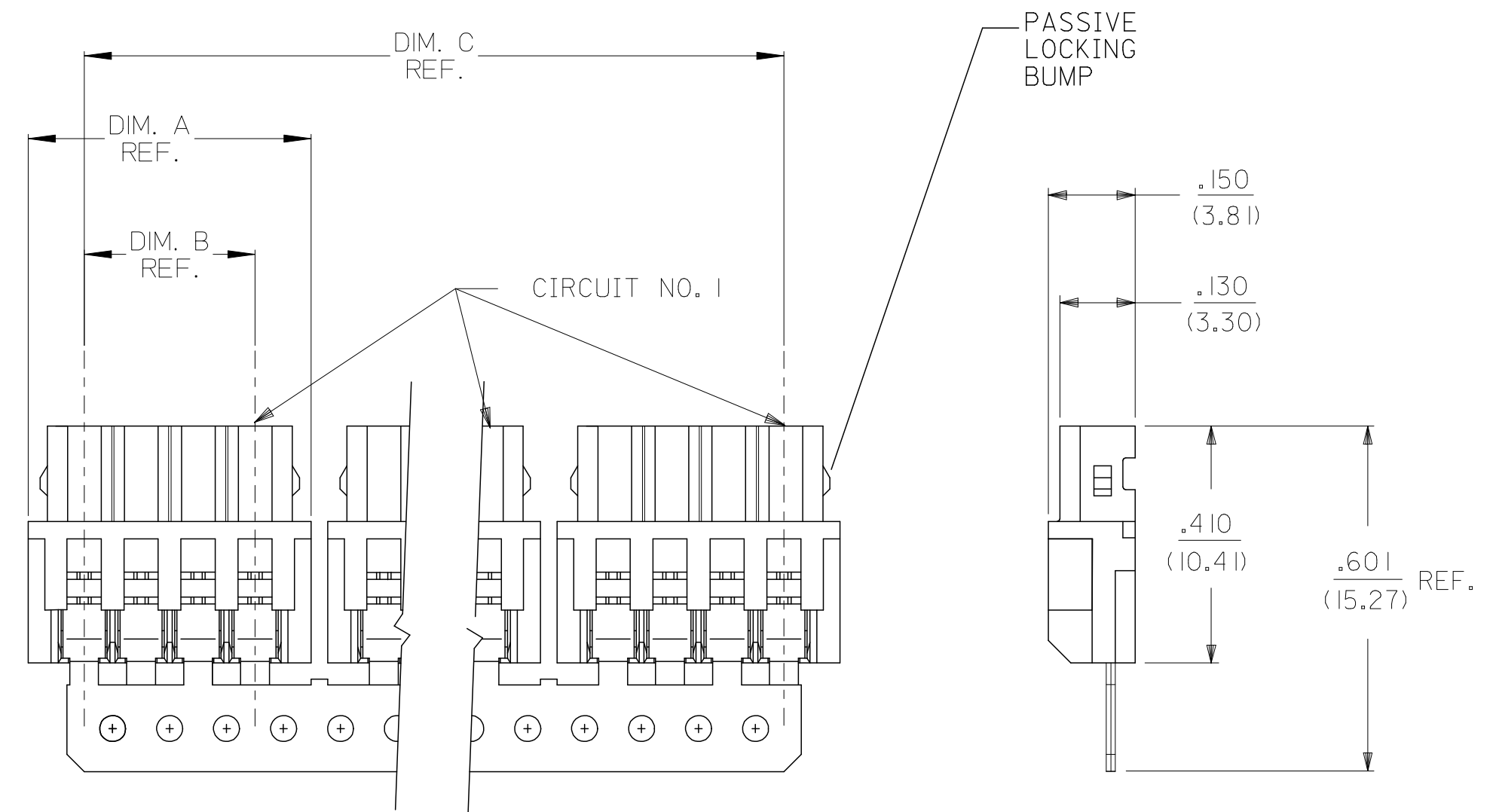
Global

Description	Product #
IDT - Manual Press	0011219757
Hawk™ Discrete Wire Terminator Machine 2.5mm	0623000500
Hawk™ Discrete Wire Terminator Machine 2.5mm	0623000700
Changehead for Parallel Action Handtool	0690080290

This document was generated on 06/08/2010

PLEASE CHECK WWW.MOLEX.COM FOR LATEST PART INFORMATION

	13	12	11	10	9	8	7	6	5	4	3	2	1
J	DISCRETE CONN. CKT SIZE	NO OF CONN. IN CHAIN	DIM. A	DIM. B	DIM. C	PASSIVE LOCKING BUMPS							
	2	10	.292 (7.42)	.098 (2.50)	2.756 (70.00)	YES							
	3	8	.390 (9.92)	.197 (5.00)	2.953 (75.00)	YES							
I	4	6	.489 (12.42)	.295 (7.50)	2.756 (70.00)	YES							
	5	5	.587 (14.92)	.394 (10.00)	2.756 (70.00)	YES							
	6	4	.685 (17.40)	.492 (12.50)	2.556 (65.00)	YES							
H	7	4	.783 (19.90)	.591 (15.00)	2.952 (75.00)	YES							
	8	3	.882 (22.40)	.689 (17.50)	2.461 (62.50)	YES							
	9	3	.980 (24.90)	.787 (20.00)	2.756 (70.00)	NO							
G	10	2	1.079 (27.40)	.886 (22.50)	1.969 (50.00)	NO							
	11	2	1.177 (29.90)	.984 (25.00)	2.165 (55.00)	NO							
	12	2	1.276 (32.40)	1.082 (27.50)	2.362 (60.00)	NO							
F	13	2	1.374 (34.90)	1.181 (30.00)	2.559 (65.00)	NO							
	14	2	1.472 (37.40)	1.279 (32.50)	2.756 (70.00)	NO							
	15	2	1.571 (39.90)	1.378 (35.00)	2.952 (75.00)	NO							



NOTES:

- MATERIAL:
HOUSING: POLYESTER, 7.5% GLASS FILLED, 94V-0
TERMINAL: PHOS. BRONZE
- FINISH:
(P909) *OVERALL HOT TIN DIP: .000100/0.00254 MIN.
*THE PRIMARY SHIPPING CARTON WILL BE LABELED "COMPLIANT TO RoHS DIRECTIVE 2002/95/EC AND ELV ANNEX II OF DIRECTIVE 2000/53/EC". CARTONS WITHOUT THIS LABEL MAY CONTAIN PRODUCT WITH TIN/LEAD PLATINGS.
- FOR PRODUCT SPEC'S SEE PS-42219-0001
- PACKAGING SPECIFICATION: SEE LENGEND
- THE WIRE TERMINATION SPEC IS SMES-42219-0002.
- THIS PART CONFORMS TO CLASS B REQUIREMENTS OF COSMETIC SPECIFICATION PS-45499-002.

42219-N***-*

NO OF CKTS ———

HOUSING COLOR ———

PACKAGING SPEC.
BLANK= PK-70873-0140 (LARGE BOX)
I= PK-40873-0061 (SMALL BOX)

TERMINAL
BLANK=42218

A= (NATURAL)
B= (BLUE)
C= (BROWN)
D= (RED)
E= (ORANGE)
F= (YELLOW)
G= (GREEN)
H= (GRAY)

3	J1
2	J1
1	J1
SHT.	REV.

UPDATE NOTES EC NO: UCP2007-1815 DRWN: PRIDDER 2007/01/26 CHK'D: ADERR 2007/01/30 APPR: FSMITH 2007/02/01	QUALITY SYMBOLS = 0 = 0.014	GENERAL TOLERANCES (UNLESS SPECIFIED)		DIMENSION STYLE IN/MM		SCALE 4:1	DESIGN UNITS METRIC	THIRD ANGLE PROJECTION	
		4 PLACES ± --- ± ---	DRAWN BY AG	DATE 1989/02/06	TITLE 2.5MM I.D.T. CONNECTOR ASSEMBLY				
		3 PLACES ± --- ± .010	CHECKED BY RE	DATE 1989/02/06	MOLEX INCORPORATED				
		2 PLACES ± 0.25 ± .014	APPROVED BY WRL	DATE 1989/02/06	MATERIAL NO. SEE CHART	DOCUMENT NO. SDA-42219-*	SHEET NO. 1 OF 3		
1 PLACE ± 0.36 ± ---		ANGULAR ± 1/2°		DRAFT WHERE APPLICABLE MUST REMAIN WITHIN DIMENSIONS		THIS DRAWING CONTAINS INFORMATION THAT IS PROPRIETARY TO MOLEX INCORPORATED AND SHOULD NOT BE USED WITHOUT WRITTEN PERMISSION			

A-422 19-NA		A-422 19-NA-R		A-422 19-NB		A-422 19-NC		A-422 19-ND		A-422 19-NE	
PART NO.	ENG. NO.	PART NO.	ENG. NO.	PART NO.	ENG. NO.	PART NO.	ENG. NO.	PART NO.	ENG. NO.	PART NO.	ENG. NO.
22-43-3020	A-422 19-2A		A-422 19-2A-R	22-44-6026	A-422 19-2B		A-422 19-2C	22-44-6022	A-422 19-2D	22-44-6024	A-422 19-2E
22-43-3030	A-422 19-3A		A-422 19-3A-R	22-44-6036	A-422 19-3B		A-422 19-3C	22-44-6032	A-422 19-3D	22-44-6034	A-422 19-3E
22-43-3040	A-422 19-4A		A-422 19-4A-R	22-44-6046	A-422 19-4B		A-422 19-4C	22-44-6042	A-422 19-4D	22-44-6044	A-422 19-4E
22-43-3050	A-422 19-5A		A-422 19-5A-R	22-44-6056	A-422 19-5B		A-422 19-5C	22-44-6052	A-422 19-5D	22-44-6054	A-422 19-5E
22-43-3060	A-422 19-6A		A-422 19-6A-R		A-422 19-6B		A-422 19-6C	22-44-6062	A-422 19-6D	22-44-6064	A-422 19-6E
22-43-3070	A-422 19-7A		A-422 19-7A-R		A-422 19-7B		A-422 19-7C	22-44-6072	A-422 19-7D	22-44-6074	A-422 19-7E
22-43-3080	A-422 19-8A		A-422 19-8A-R		A-422 19-8B		A-422 19-8C	22-44-6082	A-422 19-8D	22-44-6084	A-422 19-8E
22-43-3090	A-422 19-9A		A-422 19-9A-R		A-422 19-9B		A-422 19-9C	22-44-6092	A-422 19-9D	22-44-6094	A-422 19-9E
22-43-3100	A-422 19-10A		A-422 19-10A-R		A-422 19-10B		A-422 19-10C	22-44-6102	A-422 19-10D	22-44-6104	A-422 19-10E
22-43-3110	A-422 19-11A		A-422 19-11A-R		A-422 19-11B		A-422 19-11C		A-422 19-11D		A-422 19-11E
22-43-3120	A-422 19-12A		A-422 19-12A-R		A-422 19-12B		A-422 19-12C	22-44-6122	A-422 19-12D		A-422 19-12E
22-43-3130	A-422 19-13A		A-422 19-13A-R		A-422 19-13B		A-422 19-13C		A-422 19-13D		A-422 19-13E
22-43-3140	A-422 19-14A		A-422 19-14A-R		A-422 19-14B		A-422 19-14C	22-44-6142	A-422 19-14D		A-422 19-14E
22-43-3150	A-422 19-15A		A-422 19-15A-R		A-422 19-15B		A-422 19-15C		A-422 19-15D		A-422 19-15E

A-422 19-NF		A-422 19-NG				A-422 19-NA-1		A-422 19-NH			
PART NO.	ENG. NO.	PART NO.	ENG. NO.	PART NO.	ENG. NO.	PART NO.	ENG. NO.	PART NO.	ENG. NO.	PART NO.	ENG. NO.
22-44-6021	A-422 19-2F	22-44-6023	A-422 19-2G			22-43-3022	A-422 19-2A-1		A-422 19-2H		
22-44-6031	A-422 19-3F	22-44-6033	A-422 19-3G			22-43-3032	A-422 19-3A-1		A-422 19-3H		
22-44-6041	A-422 19-4F	22-44-6043	A-422 19-4G			22-43-3042	A-422 19-4A-1		A-422 19-4H		
22-44-6051	A-422 19-5F	22-44-6053	A-422 19-5G			22-43-3052	A-422 19-5A-1		A-422 19-5H		
22-44-6061	A-422 19-6F	22-44-6063	A-422 19-6G			22-43-3062	A-422 19-6A-1		A-422 19-6H		
22-44-6071	A-422 19-7F	22-44-6073	A-422 19-7G			22-43-3072	A-422 19-7A-1		A-422 19-7H		
	A-422 19-8F	22-44-6083	A-422 19-8G			22-43-3082	A-422 19-8A-1		A-422 19-8H		
22-44-6091	A-422 19-9F	22-44-6093	A-422 19-9G			22-43-3092	A-422 19-9A-1		A-422 19-9H		
22-44-6101	A-422 19-10F	22-44-6103	A-422 19-10G			22-43-3102	A-422 19-10A-1		A-422 19-10H		
	A-422 19-11F	22-44-6113	A-422 19-11G			22-43-3112	A-422 19-11A-1		A-422 19-11H		
	A-422 19-12F	22-44-6123	A-422 19-12G			22-43-3122	A-422 19-12A-1		A-422 19-12H		
	A-422 19-13F	22-44-6133	A-422 19-13G			22-43-3132	A-422 19-13A-1		A-422 19-13H		
	A-422 19-14F	22-44-6143	A-422 19-14G			22-43-3142	A-422 19-14A-1		A-422 19-14H		
	A-422 19-15F	22-44-6153	A-422 19-15G			22-43-3152	A-422 19-15A-1		A-422 19-15H		

ADD 22-44-6122/6142 EC NO: UCP2007-1815 DRWN: PRIDDER 2007/01/26 CHKD: ADERR 2007/01/30 APPR: FSMITH 2007/02/01	QUALITY SYMBOLS	GENERAL TOLERANCES (UNLESS SPECIFIED)	DIMENSION STYLE	SCALE	DESIGN UNITS	THIRD ANGLE PROJECTION																																													
		<table border="1"> <tr><th colspan="2">mm</th><th>INCH</th></tr> <tr><td>4 PLACES</td><td>± ---</td><td>± ---</td></tr> <tr><td>3 PLACES</td><td>± ---</td><td>± ---</td></tr> <tr><td>2 PLACES</td><td>± ---</td><td>± ---</td></tr> <tr><td>1 PLACE</td><td>± ---</td><td>± ---</td></tr> </table>	mm		INCH	4 PLACES	± ---	± ---	3 PLACES	± ---	± ---	2 PLACES	± ---	± ---	1 PLACE	± ---	± ---	IN/MM	---	METRIC																															
	mm		INCH																																																
	4 PLACES	± ---	± ---																																																
3 PLACES	± ---	± ---																																																	
2 PLACES	± ---	± ---																																																	
1 PLACE	± ---	± ---																																																	
<table border="1"> <tr><th colspan="2">mm</th><th>INCH</th></tr> <tr><td>4 PLACES</td><td>± ---</td><td>± ---</td></tr> <tr><td>3 PLACES</td><td>± ---</td><td>± ---</td></tr> <tr><td>2 PLACES</td><td>± ---</td><td>± ---</td></tr> <tr><td>1 PLACE</td><td>± ---</td><td>± ---</td></tr> </table>	mm		INCH	4 PLACES	± ---	± ---	3 PLACES	± ---	± ---	2 PLACES	± ---	± ---	1 PLACE	± ---	± ---	<table border="1"> <tr><th colspan="2">mm</th><th>INCH</th></tr> <tr><td>4 PLACES</td><td>± ---</td><td>± ---</td></tr> <tr><td>3 PLACES</td><td>± ---</td><td>± ---</td></tr> <tr><td>2 PLACES</td><td>± ---</td><td>± ---</td></tr> <tr><td>1 PLACE</td><td>± ---</td><td>± ---</td></tr> </table>	mm		INCH	4 PLACES	± ---	± ---	3 PLACES	± ---	± ---	2 PLACES	± ---	± ---	1 PLACE	± ---	± ---	<table border="1"> <tr><th colspan="2">DATE</th></tr> <tr><td>DRAWN BY</td><td>SCHMIDGALL</td></tr> <tr><td>CHECKED BY</td><td>EDGLEY</td></tr> <tr><td>APPROVED BY</td><td>LENZ</td></tr> </table>	DATE		DRAWN BY	SCHMIDGALL	CHECKED BY	EDGLEY	APPROVED BY	LENZ	<table border="1"> <tr><th colspan="2">DATE</th></tr> <tr><td>1991/05/17</td><td></td></tr> <tr><td>1991/05/17</td><td></td></tr> <tr><td>1991/05/17</td><td></td></tr> </table>	DATE		1991/05/17		1991/05/17		1991/05/17		TITLE	
mm		INCH																																																	
4 PLACES	± ---	± ---																																																	
3 PLACES	± ---	± ---																																																	
2 PLACES	± ---	± ---																																																	
1 PLACE	± ---	± ---																																																	
mm		INCH																																																	
4 PLACES	± ---	± ---																																																	
3 PLACES	± ---	± ---																																																	
2 PLACES	± ---	± ---																																																	
1 PLACE	± ---	± ---																																																	
DATE																																																			
DRAWN BY	SCHMIDGALL																																																		
CHECKED BY	EDGLEY																																																		
APPROVED BY	LENZ																																																		
DATE																																																			
1991/05/17																																																			
1991/05/17																																																			
1991/05/17																																																			
	<table border="1"> <tr><td>ANGULAR ±1/2°</td></tr> </table>	ANGULAR ±1/2°	DRAFT WHERE APPLICABLE MUST REMAIN WITHIN DIMENSIONS	SEE CHART	MOLEX INCORPORATED	2.5 MM I.D. CONNECTOR ADDEMBLY																																													
ANGULAR ±1/2°																																																			