

PLEASE CHECK WWW.MOLEX.COM FOR LATEST PART INFORMATION

Part Number: [0351410201](#)
Status: **Active**
Description: 2.00mm (.079") Dia Wire-to-Wire Housing, Female, 2 Circuits

Documents:

[3D Model](#) [Product Specification PS-35141-001 \(PDF\)](#)
[Drawing \(PDF\)](#) [RoHS Certificate of Compliance \(PDF\)](#)

Agency Certification

UL E29179

General

Product Family Crimp Housings
 Series [35141](#)
 Product Name N/A

Physical

Breakaway No
 Circuits (maximum) 2
 Flammability 94V-2
 Gender Receptacle
 Glow-Wire Compliant No
 Number of Rows 1
 Packaging Type Bag
 Panel Mount No
 Pitch - Mating Interface (in) 0.244 In
 Pitch - Mating Interface (mm) 6.20 mm
 Pitch - Term. Interface (in) 0.244 In
 Pitch - Term. Interface (mm) 6.20 mm
 Polarized to Mating Part Yes
 Ports 1
 Stackable No
 Temperature Range - Operating -25°C to +90°C

Electrical

Current - Maximum per Contact 15A

Material Info

Reference - Drawing Numbers

Product Specification PS-35141-001
 Sales Drawing SD-35141-020*

EU RoHS

**ELV and RoHS
Compliant**

REACH SVHC

Contains SVHC: No

**Halogen-Free
Status**

Halogen-Free

China RoHS



**Need more information on product
environmental compliance?**

Email productcompliance@molex.com
 For a multiple part number RoHS Certificate of
 Compliance, [click here](#)

Please visit the [Contact Us](#) section for any
 non-product compliance questions.

Search Parts in this Series

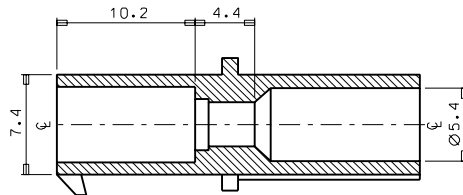
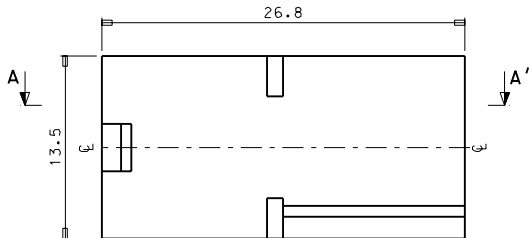
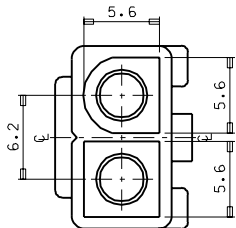
[35141Series](#)

Mates With

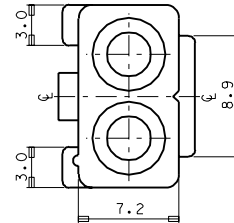
[35143](#)

Use With

[35727-0201](#)



SEC' : A-A"



NOTES

1. MATERIAL : NYLON (UL94V-2)
2. APPLICABLE TERMINAL : 35727-0201
3. MATED HOUSING : 35143-020*
4. COLOR : 35141-0201 (NATURAL)
35141-0202 (RED)

				MATERIAL	SEE NOTES	MOLEX-KOREA CO.,LTD.		
D	REVISED		96.5.3	GENERAL TOLERANCE	±0.25			DRAWN BY
C	REVISED	93-018	95.7.16	ANGLE :	±1°	APPR'D BY	SCALE	
B	REVISED		92.5.18	DIMENSION CLASSIFICATION			4/1	
A	NEW RELEASED		92.3.5	▲ : CRITICAL ▼ : MAJOR () : REFERENCE		TITLE :		
LTR	REVISION RECORD	ECN	DATE	ASS'Y PART		Ø 2.0 W/W CONN' RECEPTACLE HSG-2P		SHEET
REVISE ONLY ON CAD SYSTEM				DESCRIPTION		ENG. NO.	SD 35141-020*	1 of 1
						REV		D