

**PLEASE CHECK WWW.MOLEX.COM FOR LATEST PART INFORMATION**

**Part Number:** [0945294103](#)  
**Status:** **Active**  
**Description:** 5.00mm (.197") Pitch RAST, Receptacle, Natural Color, PA Polyamide (Nylon) 6/6, 3 Circuits, Glow Wire Compatible

**Documents:**

[Drawing \(PDF\)](#) [Product Specification PS-94529-002 \(PDF\)](#)  
[Product Specification PS-94529-001 \(PDF\)](#) [RoHS Certificate of Compliance \(PDF\)](#)

**Agency Certification**

CSA LR19980  
 UL E29179

**General**

Product Family Crimp Housings  
 Series [94529](#)  
 Product Name Pitch 5 Edge Card

**Physical**

Breakaway No  
 Circuits (maximum) 3  
 Color - Resin Natural  
 Flammability 94V-0  
 Gender Female  
 Glow-Wire Compliant Yes  
 Lock to Mating Part Yes  
 Material - Resin Nylon  
 Number of Rows 1  
 Packaging Type Bag  
 Panel Mount No  
 Pitch - Mating Interface (in) 0.197 In  
 Pitch - Mating Interface (mm) 5.00 mm  
 Pitch - Term. Interface (in) 0.197 In  
 Pitch - Term. Interface (mm) 5.00 mm  
 Polarized to Mating Part Yes  
 Ports 1  
 Stackable No  
 Temperature Range - Operating -40°C to +105°C, -40°C to +85°C

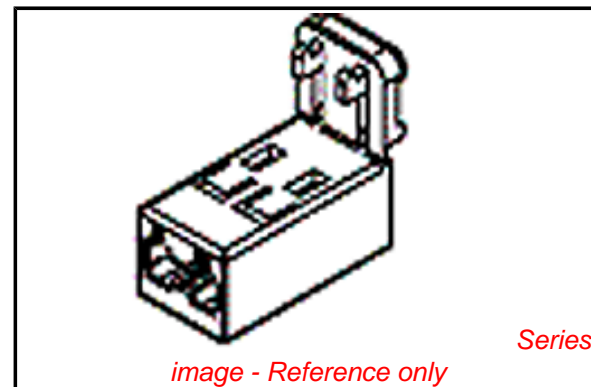
**Electrical**

Current - Maximum per Contact 6A

**Material Info**

**Reference - Drawing Numbers**

Product Specification PS-94529-001, PS-94529-002  
 Sales Drawing SD-94529-026



**EU RoHS**

**ELV and RoHS  
 Compliant**  
**REACH SVHC  
 Not Reviewed**  
**Halogen-Free  
 Status**

**China RoHS**



**Need more information on product  
 environmental compliance?**

Email [productcompliance@molex.com](mailto:productcompliance@molex.com)  
 For a multiple part number RoHS Certificate of Compliance, [click here](#)

Please visit the [Contact Us](#) section for any non-product compliance questions.

**Search Parts in this Series**

[94529Series](#)

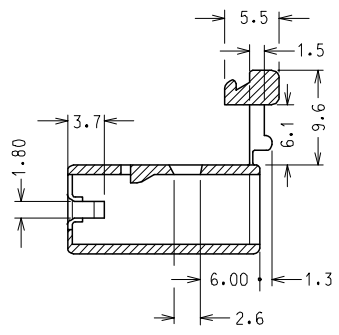
**Mates With**

PCB thickness 1.50mm (.059")

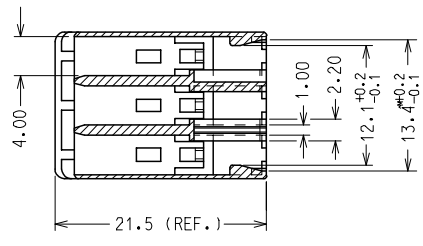
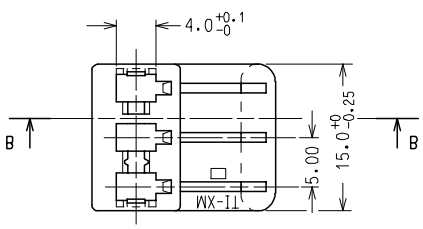
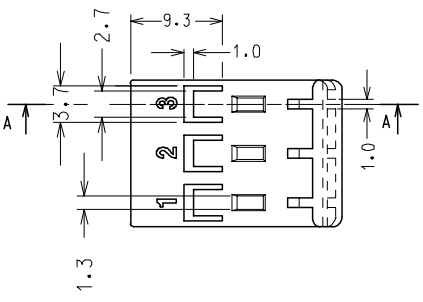
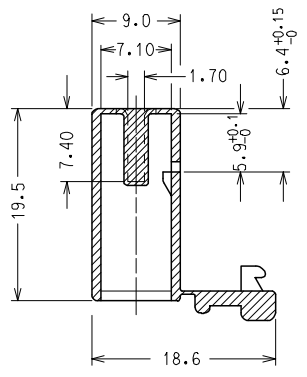
**Use With**

[94529-1203 Terminal](#)

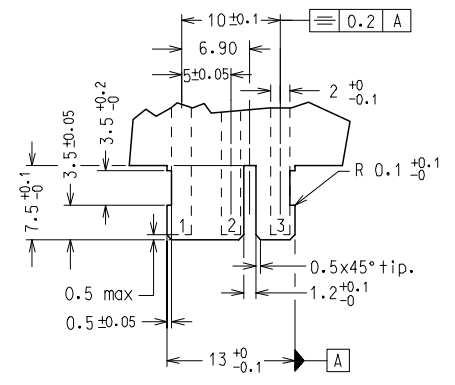
SECTION A-A



SECTION B-B



DIMA 3 VIE PER C.S. spess. 1.5 ± 0.1  
 VISTA LATO COMPONENTI  
 RECOMMENDED PCB LAYOUT, PCB THICK.: 1.5 ± 0.1  
 VIEW FROM COMPONENT SIDE



NOTA: LE DIMENSIONI VANNO MISURATE CON CORPI STABILIZZATI SECONDO NG 2301. (AUMENTO IN PESO DEL 2.7 %)

NOTE: PARTS SHALL BE DIMENSIONALLY CHECKED AFTER ATTAINING EQUILIBRIUM CONDITIONS E.G. 27 % INCREASE IN WEIGHT FOR HUMIDITY ABSORPTION FROM DRY STATUS.

CARATTERISTICHE PRODOTTO SECONDO PS-94529  
 PRODUCT CHARACTERISTICS ACCORDING TO PS-94529 E

CONFEZIONE: 4000 pz. in scatola  
 PACKAGING: 4000 pcs. in carton box

CODICE	P/N	MATERIAL
94529-9103		PA 66 NAT. UL94 V2 GWT 850 °C
94529-4103		NYLON 6.6 GWT 750 °C sec. IEC 60335-1 TEST METHOD IEC 60695-2-11 NATURAL

SPQ: 4000 pz.

Descr. Std: HSG FOR FORK TERMINAL 3 CKT

ENTER DESCRIPTION EC NO: Z2006-0051 DRWN:FGOTTARDO 2005/10/12 CHKD:RSANDANO 2005/10/12 APPR:GZUIN 2005/10/14	QUALITY SYMBOLS ▽=0 ▽C=0	GENERAL TOLERANCES (UNLESS SPECIFIED) mm INCH 4 PLACES ± --- ± --- 3 PLACES ± --- ± --- 2 PLACES ± 0.10 ± --- 1 PLACE ± 0.2 ± --- ANGULAR ± 2 °	DIMENSION STYLE MM ONLY DRAWN BY DATE FGOTTARDO 2002/01/10 CHECKED BY DATE MTESTAGUZZA 2002/01/10 APPROVED BY DATE GZUIN 2002/01/10	SCALE 2:1	DESIGN UNITS METRIC	FIRST ANGLE PROJECTION
	3 CKT HOUSING FOR STRAIGHT FORK TERMINAL					
	MOLEX MOLEX INCORPORATED					
	DRAFT WHERE APPLICABLE MUST REMAIN WITHIN DIMENSIONS			MATERIAL NO. SEE TABLE	DOCUMENT NO. SD-94529-026	SHEET NO. 1 OF 1