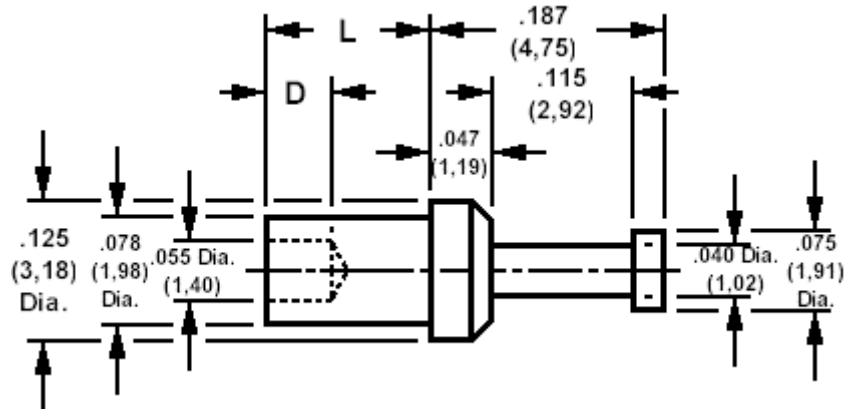


160-1457 Solder terminal, turreted

Recommended mounting hole .082 (2,08), #45 drill



How to order code

160-1457-XX-YY-00

Basic Part No XX = L dimension, YY = Plating Finish

DIMENSIONS (XX)

Basic Part No	(XX)	L	Board Thickness	D
160-1457	-01	.078 (1,98)	.031 (0,79)	.068 (1,19)
	-02	.109 (2,77)	.062 (1,58)	.098 (2,48)
	-03	.141 (3,58)	.094 (2,38)	.098 (2,48)
	-04	.172 (4,37)	.125 (3,18)	.098 (2,48)

MATERIALS

Component	Material	Finish (YY)		
		-01	-03	-05
Terminal	Brass	Silver	Gold	Electro Solder

SWAGE TOOLING

Recommended Swaging Tools:-	
Anvil	435-6446-01-00-00
Roll punch	435-6603-01-00-00
Flare punch	435-6663-01-00-00