

PLEASE CHECK WWW.MOLEX.COM FOR LATEST PART INFORMATION

Part Number: [0355191600](#)
Status: **Active**
Description: 2.29/6.35mm (.090/.250") Tab Hybrid Wire-to-Wire Housing, Female, 16 Circuits

Documents:

[Drawing \(PDF\)](#) [RoHS Certificate of Compliance \(PDF\)](#)
[Product Specification PS-35519-001 \(PDF\)](#)

General

Product Family	Crimp Housings
Series	35519
Comments	With option #2 polarization
Product Name	N/A

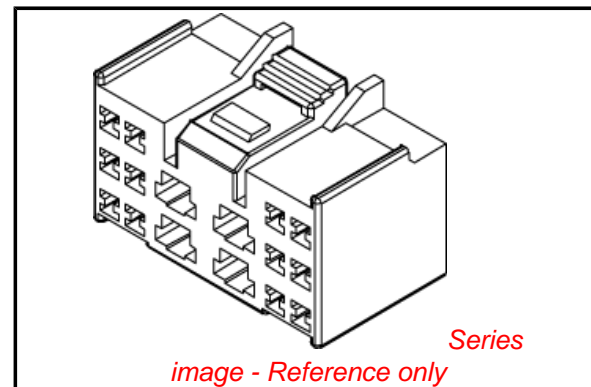
Physical

Circuits (maximum)	16
Color - Resin	Natural
Gender	Female
Glow-Wire Compliant	No
Material - Resin	Polyester
Number of Rows	3
Packaging Type	Bag
Panel Mount	No
Pitch - Mating Interface (in)	0.165 In, 0.374 In
Pitch - Mating Interface (mm)	4.20 mm, 9.50 mm
Temperature Range - Operating	-40°C to +120°C

Material Info

Reference - Drawing Numbers

Product Specification	PS-35519-001
Sales Drawing	SD-35519-160*



EU RoHS

**ELV and RoHS
Compliant**
REACH SVHC
 Not Reviewed
**Halogen-Free
Status**

China RoHS



**Need more information on product
environmental compliance?**

Email productcompliance@molex.com
 For a multiple part number RoHS Certificate of Compliance, [click here](#)

Please visit the [Contact Us](#) section for any non-product compliance questions.

Search Parts in this Series

[35519Series](#)

Mates With

[35522|35523](#)

Use With

[35407](#) , [35427](#)

DO NOT SCALE DRAWING DIMENSION IN METRIC

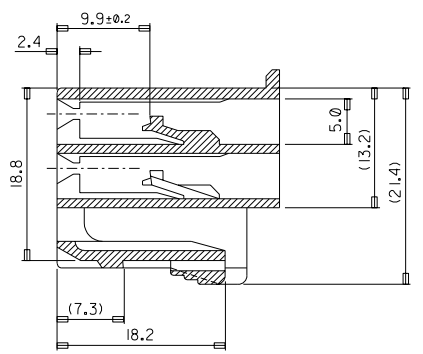
DWG. NO. SD 35519-160*

SIMILAR ITEM

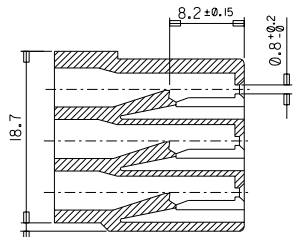
PROJECT NO. KOR 96-038

C

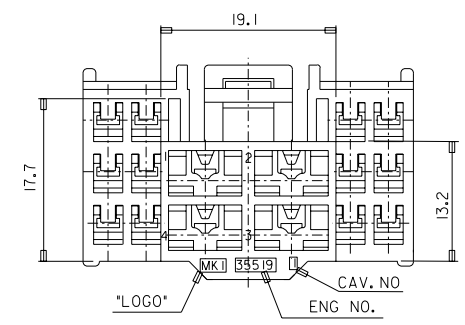
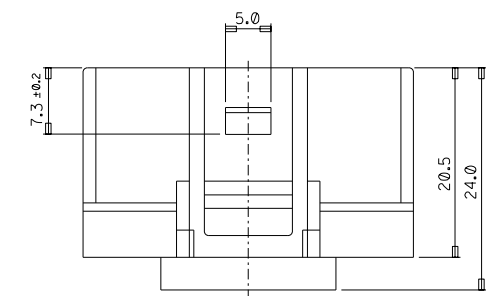
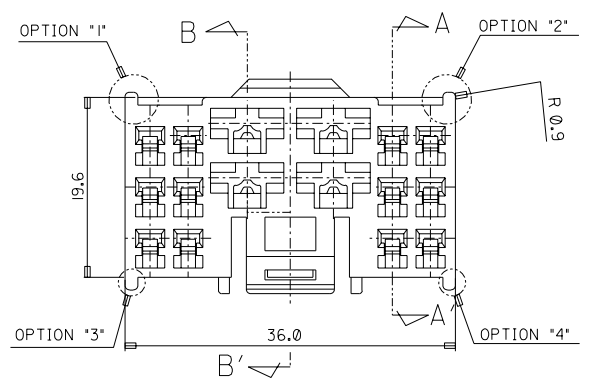
B



SECTION B-B'

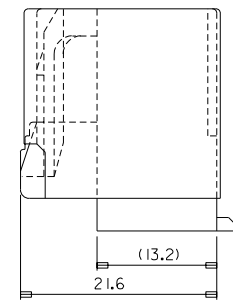


SECTION A-A'



*TABLE 1

PART NO.	COLOR	REMARKS
E 35519-1600	NATERAL	WITH OPTION "2"
E 35519-1601	BLACK	WITH OPTION "1"
E 35519-1603	YELLOW	WITH OPTION "4"
E 35519-1605	GRAY	WITH OPTION "3"



NOTE

1. MATERIAL : POLYESTER (P.B.T)
2. COLOR : SEE TABLE 1.
3. APPLICABLE TERMINAL : 35407-6*02/
35427-9***
4. APPLICABLE HOUSING : 35522-240*/35523-160*.
5. PRODUCT SPECIFICATION : PS-35519-0001.

REVISED EC NO. KOR 1998-0116 DRAWN: C.Y. CHO CHK: B.K. CHOI APPR: C.W. LEE	QUALITY SYMBOLS MAJOR CRITICAL C	GENERAL TOLERANCES: (UNLESS SPECIFIED)		SCALE	DESIGN UNITS <input checked="" type="checkbox"/> mm <input type="checkbox"/> INCH	THIRD ANGLE PROJECTION	DIMENSIONS: <input type="checkbox"/> mm <input type="checkbox"/> INCH <input checked="" type="checkbox"/> mm ONLY	SHT REV		
		4 PLACES ±. ±.	3 PLACES ±. ±.	2 PLACES ±0.20 ±.	1 PLACE ±0.30 ±.	DRAWN BY & DATE C.Y. CHO 1998.05.15	TITLE: 090/250 HYBRID FEMALE HOUSING (16P)			
		ANGULAR: ± 1 °				CHECKED BY & DATE B.K. CHOI 1998.05.15	MOLEX INCORPORATED KOREA			
		DRAFT WHERE APPLICABLE MUST REMAIN WITHIN DIMENSIONS				APPROVED BY & DATE C.W. LEE 1998.05.15	CAD FILENAME SD35519.DGN	MATERIAL NO. SD 35519-160*	DRAWING NO. SD 35519-160*	SHEET NO. 1/1
THIS DRAWING CONTAINS INFORMATION THAT IS PROPRIETARY TO MOLEX INCORPORATED AND SHOULD NOT BE USED WITHOUT WRITTEN PERMISSION.								SIZE B		