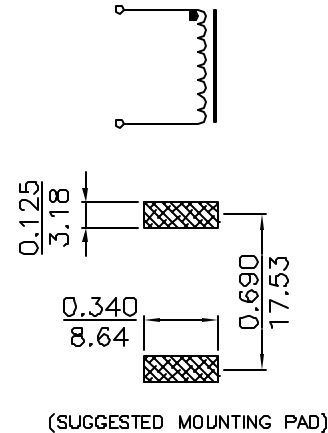
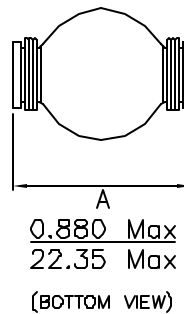
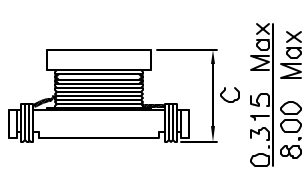
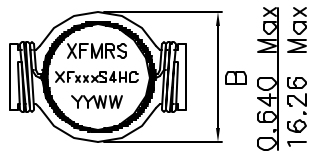


XFxxxS4HC SERIES INDUCTORS

- * Surface Mount Design
- * Low Cost, Extremely High Quality Product
- * Tape & Reel Packaging Standard, 320 Pcs per 13" Reel
- * High Power Ratings up to 30Adc
- * Self Leaded Design
- * Very Low DC Resistance
- * Custom Versions Available At No Extra Charge

Schematic:

Mechanical:



UNLESS OTHERWISE SPECIFIED
 TOLERANCES:
 .xxx ±0.010 INCH
 .xx ±0.25 mm
 Dimensions in INCH/mm

PART NUMBER	INDUCTANCE ¹ (uH ±20%)	DCR Max. (mOhms)	SRF Typ. (MHz)	ISAT ² (A)	IRMS ³ (A)
XF781S4HC	0.78	2.6	156	30	15
XF152S4HC	1.5	4.0	100	25	15
XF222S4HC	2.2	6.1	75	20	12
XF332S4HC	3.3	8.6	60	17	10
XF392S4HC	3.9	10	55	15	9.0
XF472S4HC	4.7	14	40	13	8.4
XF602S4HC	6.0	17	35	12	7.5
XF782S4HC	7.8	18	35	11	7.5
XF103S4HC	10	26	28	10	6.0
XF153S4HC	15	32	20	8	4.4

Notes:

1. Tested @ 100KHz, 0.1 Vrms.
2. Inductance drop=10% typ. at rated Isat.
3. ΔT=40°C rise typ. at Irms.
4. Electrical Specifications at 25°C.

1. Solderability: Leads shall meet MIL-STD-2026, Method 208H for solderability.
2. Flammability: UL94V-0
3. ASTM oxygen index > 28%
4. Insulation System: Class F 155°C. UL file E151556
5. Operating Temperature Range: All listed parameters are to be within tolerance from -40°C to +85°C
6. Storage Temperature Range: -55°C to +125°C
7. Aqueous wash compatible
8. SMD Lead Coplanarity: ±0.004"(0.102mm)
9. Electrical and mechanical specifications 100% tested
10. RoHS Compliant Component