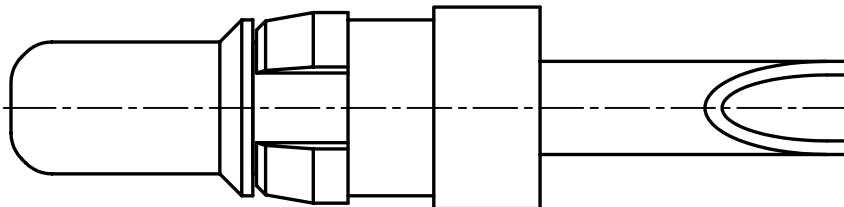
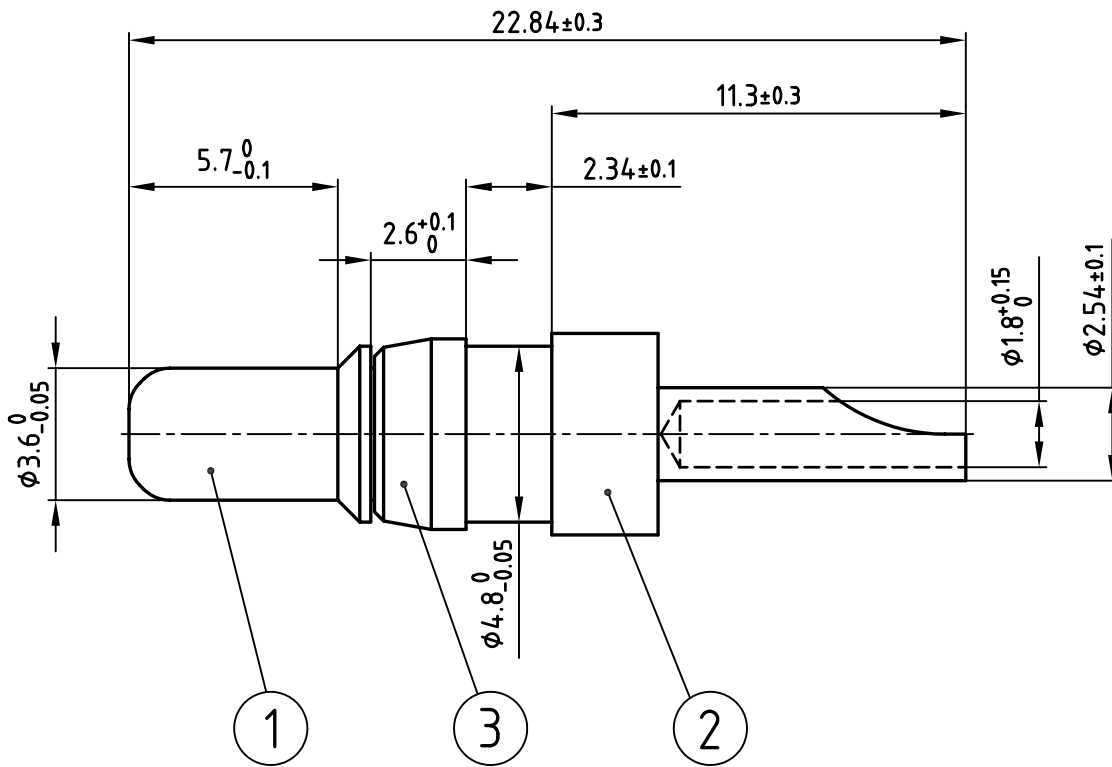


used for: D-SUB COMBINATION



**NOTES:**

- 1. MATERIAL: COPPER ALLOY
- 2. PLATING:  
 ITEM 1: min. 30µ" HARD GOLD OVER min. 50µ" NICKEL  
 ITEM 2: min. 8µ" HARD GOLD OVER min. 50µ" NICKEL  
 ITEM 3: NICKEL PLATED

Directive 2002/95/EC  
 „RoHS“  
 Compliant

THIS DRAWING MAY NOT BE COPIED OR REPRODUCED IN ANY WAY, AND MAY NOT BE PASSED ON TO A THIRD PARTY WITHOUT WRITTEN PERMISSION.  
 OWNERSHIP AND COPYRIGHT OF CONEC GmbH  
 DO NOT ALTER CAD DRAWING BY HAND

			tolerance ISO 2768-m			scale: 5:1		
			1998			date	name	material: SEE NOTES
			drawn	23.03.	Barcinski	title: <b>HIGH POWER CONTACT MALE</b> SOLDER CUP 10A D-SUB COMBINATION		
			appd.	23.03.	Mickenbecker			
			norm					
			d-old	SK211H08				
						dwg no: CAD/ REL.13		DIN-A
						product no: 13C10019X		4
rev.	description	date	name					

4

3

2

1