

PLEASE CHECK WWW.MOLEX.COM FOR LATEST PART INFORMATION

Part Number: **0475860001**
Status: **Active**
Description: Camera Socket for Mobile Phone, Top Mount, Side Contact, 6.5x6.5 Camera Module

Documents:

[3D Model](#) [Product Specification PS-47586-001 \(PDF\)](#)
[Drawing \(PDF\)](#) [RoHS Certificate of Compliance \(PDF\)](#)

General

Product Family	Other Sockets
Series	47586
Component Type	Socket
Product Name	Camera Socket

Physical

Circuits (Loaded)	24
Circuits (maximum)	24
Durability (mating cycles max)	Contact Molex
Entry Angle	Vertical (Top Entry)
Keying to Mating Part	Yes
Material - Metal	Copper Alloy
Material - Plating Mating	Gold
Material - Plating Termination	Gold
Material - Resin	High Temperature Thermoplastic
PCB Locator	No
PCB Retention	N/A
Packaging Type	Embossed Tape on Reel
Pitch - Mating Interface (in)	0.035 In
Pitch - Mating Interface (mm)	0.90 mm
Pitch - Term. Interface (in)	0.035 In
Pitch - Term. Interface (mm)	0.90 mm
Plating min: Mating (µin)	12
Plating min: Mating (µm)	0.3
Plating min: Termination (µin)	1
Plating min: Termination (µm)	0.025
Temperature Range - Operating	N/A
Termination Interface: Style	Surface Mount

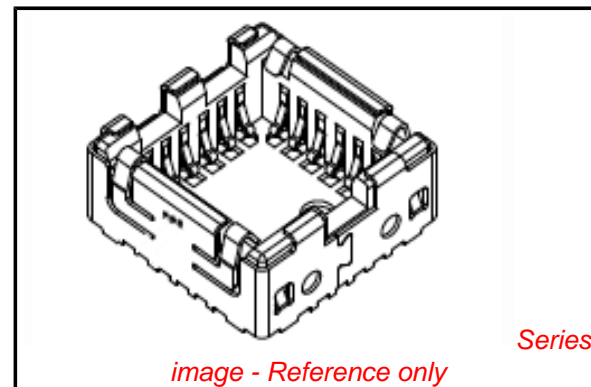
Electrical

Current - Maximum per Contact	Contact Molex
Voltage - Maximum	N/A

Material Info

Reference - Drawing Numbers

Product Specification	PS-47586-001
Sales Drawing	SD-47586-001



EU RoHS

**ELV and RoHS
Compliant**
**REACH SVHC
Contains SVHC: No**
**Halogen-Free
Status**

China RoHS



**Need more information on product
environmental compliance?**

Email productcompliance@molex.com
For a multiple part number RoHS Certificate of
Compliance, [click here](#)

Please visit the [Contact Us](#) section for any
non-product compliance questions.

Search Parts in this Series

47586Series

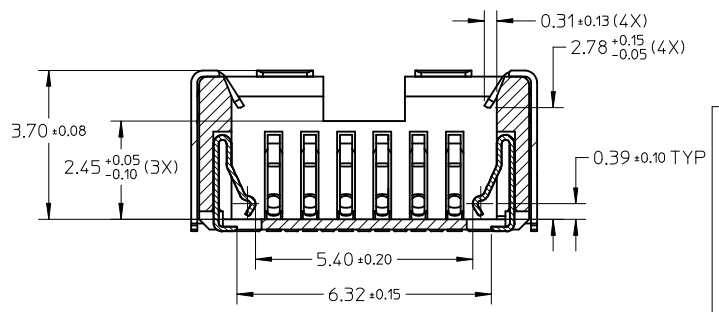
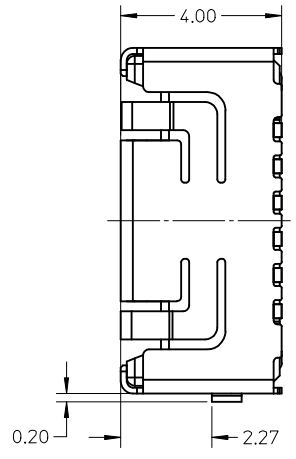
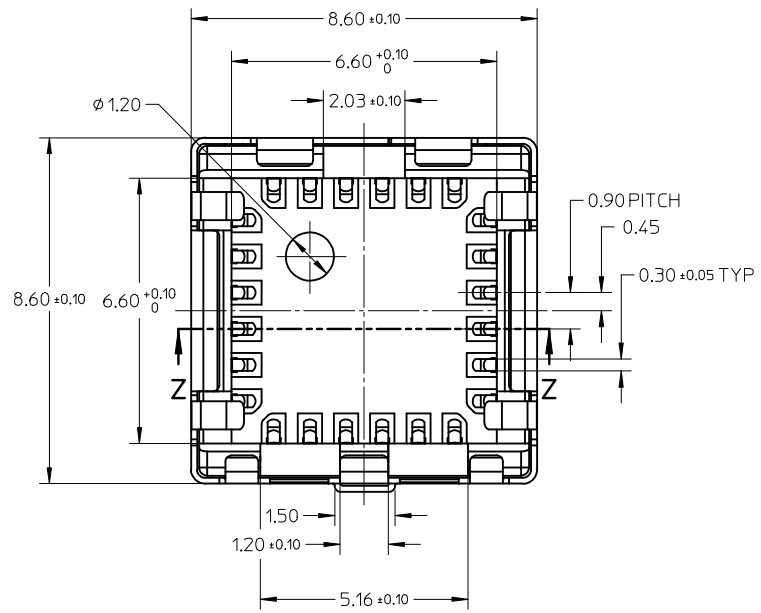
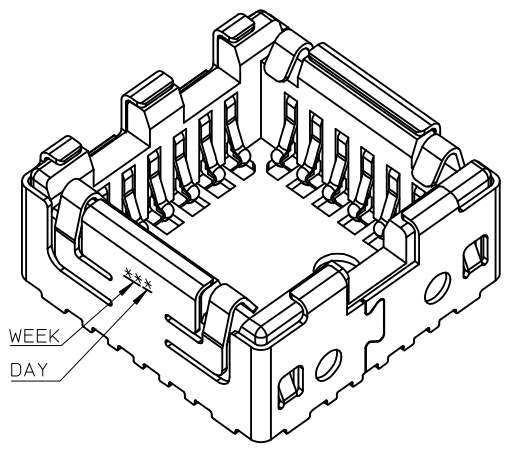
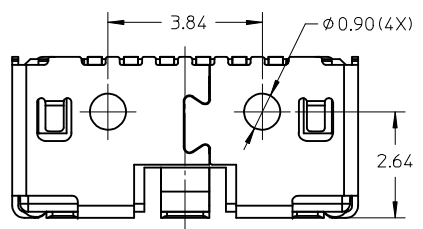
Mates With

Camera Module

Use With

47586-0004 Cap

10 9 8 7 6 5 4 3 2 1



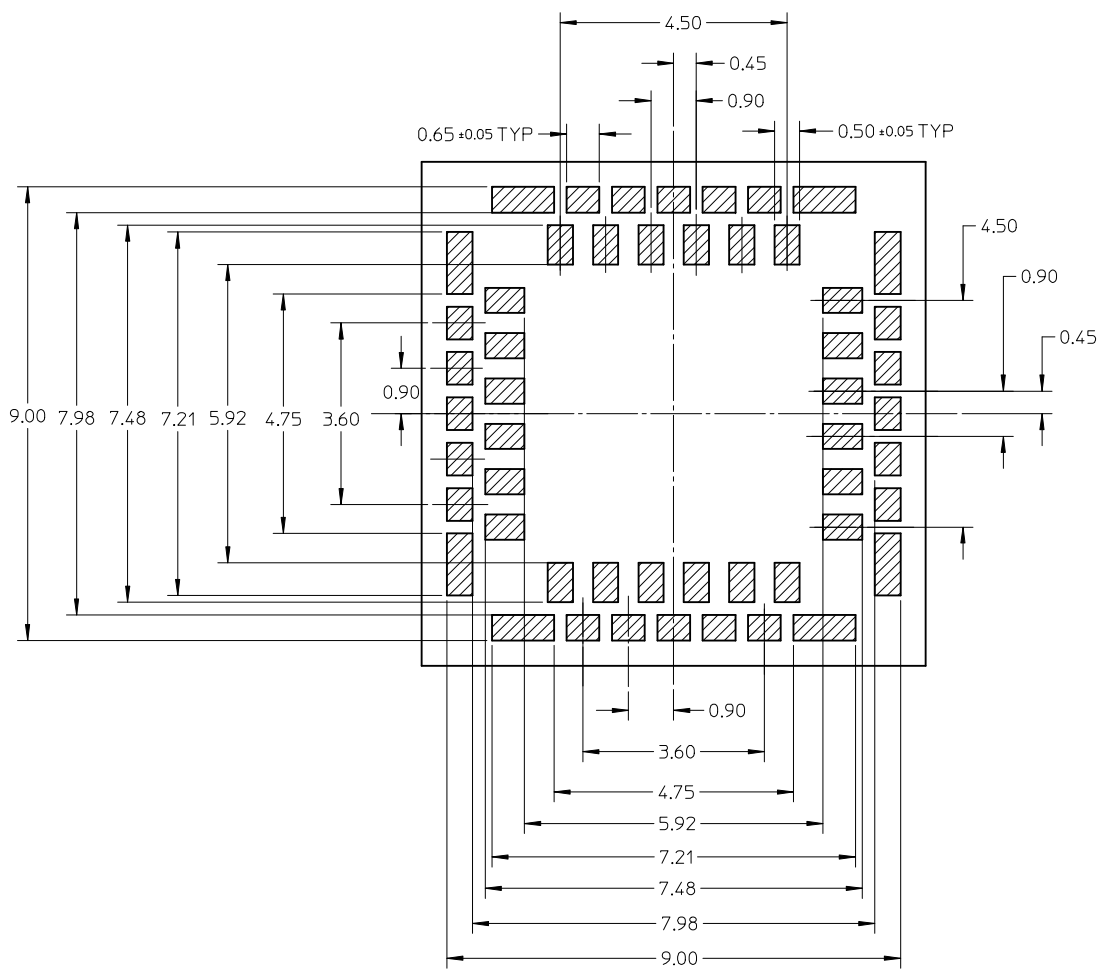
SECTION Z-Z

NOTES:

- MATERIAL:
METAL SHELL: COPPER ALLOY 0.15MM THICKNESS
HOUSING: HIGH TEMPERATURE THERMAL PLASTIC,
TERMINAL: COPPER ALLOY 0.12MM THICKNESS
- PLATING:
METAL SHELL: GOLD FLASH PLATING ON SOLDER TAIL,
ALL OVER 2.0 MICRON MIN NICKEL OVERALL.
TERMINAL: 0.3 MICRON MIN. GOLD ON CONTACT AREA,
GOLD FLASH PLATING ON SOLDER TAIL,
ALL OVER 2.0 MICRON MIN NICKEL OVERALL.
- APPLICABLE TOP COVER :475860004,SEE DRAWING SD-47586-002
- COMPLIANT TO RoHS DIRECTIVE 2002/95/EC AND ELV DIRECTIVE 2000/53/EC.

RELEASE EC NO: SH2009-0679 DRWN: J. CHENG CHKD: CHIKD: APPR: H. WANG 2009/05/12 2009/05/14 2009/05/21	QUALITY SYMBOLS	GENERAL TOLERANCES (UNLESS SPECIFIED)	DIMENSION STYLE	SCALE	DESIGN UNITS	THIRD ANGLE PROJECTION
	▽=0 ◻=0	mm INCH 4 PLACES ± --- ± --- 3 PLACES ± --- ± --- 2 PLACES ± 0.13 ± --- 1 PLACE ± 0.20 ± --- ANGULAR ± 2 °	MM ONLY	8:1	METRIC	
		DRAFT WHERE APPLICABLE MUST REMAIN WITHIN DIMENSIONS	DRAWN BY DATE MSHI 2007/08/27 CHECKED BY DATE YLZHU 2007/10/31 APPROVED BY DATE HWWANG 2007/10/31	TITLE	CAMERA SOCKET 6.5X6.5 TYPE	
			MATERIAL NO.	DOCUMENT NO.	MOLEX INCORPORATED	
A			475860001		SD-47586-001	SHEET NO. 1 OF 3

9 8 7 6 5 4 3 2 1



RECOMMENDED PCB LAYOUT
(UNSPECIFIED TOLERANCE ±0.05MM)

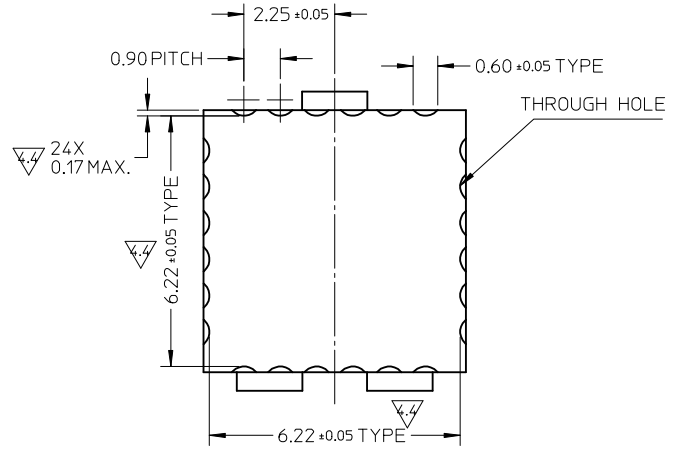
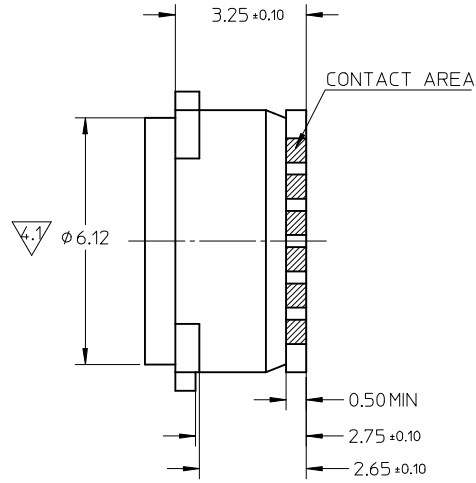
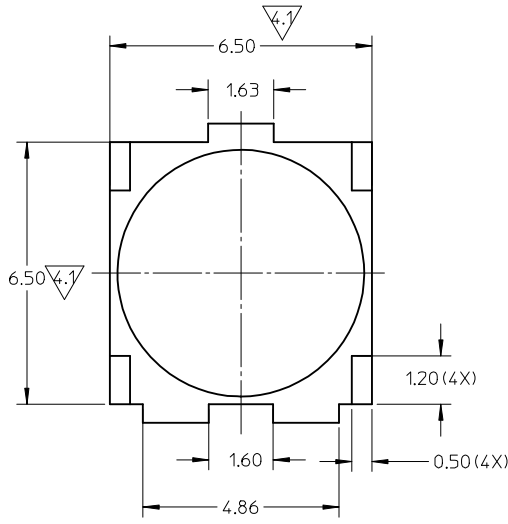
RELEASE EC NO: SH2009-0679 DRWN: JICHENG CHKD: APPR: HWWANG	2009/05/12	DESCRIPTION REV
	2009/05/14	
	2009/05/21	
	A	

QUALITY SYMBOLS
▽=0
⊕=0

GENERAL TOLERANCES (UNLESS SPECIFIED)	mm	INCH
4 PLACES	± ---	± ---
3 PLACES	± ---	± ---
2 PLACES	± 0.13	± ---
1 PLACE	± 0.20	± ---
ANGULAR ± 2 °		
DRAFT WHERE APPLICABLE MUST REMAIN WITHIN DIMENSIONS		

DIMENSION STYLE		SCALE	DESIGN UNITS	THIRD ANGLE PROJECTION
MM ONLY		8:1	METRIC	☉
DRAWN BY	DATE	TITLE		
MSH1	2007/08/27	CAMERA SOCKET 6.5X6.5 TYPE		
CHECKED BY	DATE			
YLZHU	2007/10/31	MOLEX INCORPORATED		
APPROVED BY	DATE			
HWWANG	2007/10/31	MATERIAL NO.	DOCUMENT NO.	SHEET NO.
SEE SHEET 1		SD-47586-001	2 OF 3	
SIZE	THIS DRAWING CONTAINS INFORMATION THAT IS PROPRIETARY TO MOLEX INCORPORATED AND SHOULD NOT BE USED WITHOUT WRITTEN PERMISSION			
A3				

APPLIABLE CAMERA MODULE



RELEASE EC NO: SHZ009-0679 DRWN: XJCHENG CHKD: APPR: HWWANG	2009/05/12 2009/05/14 2009/05/21	DESCRIPTION REV	QUALITY SYMBOLS	GENERAL TOLERANCES (UNLESS SPECIFIED)	DIMENSION STYLE	SCALE	DESIGN UNITS	THIRD ANGLE PROJECTION
			▽=0 □=0	mm INCH	MM ONLY	8:1	METRIC	☉ □ THIRD ANGLE PROJECTION
			4 PLACES ± --- ± --- 3 PLACES ± --- ± --- 2 PLACES ± 0.13 ± --- 1 PLACE ± 0.20 ± ---	DRAWN BY: MSH1 DATE: 2007/08/27 CHECKED BY: YLZHU DATE: 2007/10/31 APPROVED BY: HWWANG DATE: 2007/10/31	TITLE	CAMERA SOCKET 6.5X6.5 TYPE		
			ANGULAR ± 2 °	MATERIAL NO. SEE SHEET 1	DOCUMENT NO. SD-47586-001	SHEET NO. 3 OF 3		
DRAFT WHERE APPLICABLE MUST REMAIN WITHIN DIMENSIONS				THIS DRAWING CONTAINS INFORMATION THAT IS PROPRIETARY TO MOLEX INCORPORATED AND SHOULD NOT BE USED WITHOUT WRITTEN PERMISSION				