

PLEASE CHECK WWW.MOLEX.COM FOR LATEST PART INFORMATION

Part Number: [0472820001](#)
Status: **Active**
Overview: [pogo_pins](#)
Description: 2.00mm (.079") Pitch Po-Go Pin Connector, Surface Mount, Right Angle, 4 Circuits, Lead-free

Documents:

[3D Model](#) [Product Specification PS-47282-001 \(PDF\)](#)
[Drawing \(PDF\)](#) [RoHS Certificate of Compliance \(PDF\)](#)

General

Product Family	PCB Headers
Series	47282
Application	Board-to-Board
Comments	Action Height: 5.60mm (.220")
Overview	pogo_pins
Product Name	PoGo Pin

Physical

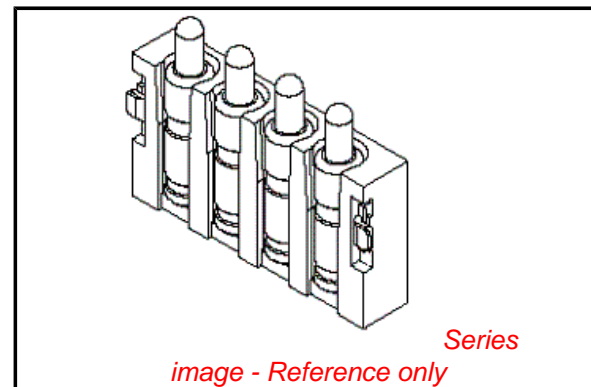
Breakaway	No
Circuits (Loaded)	4
Circuits (maximum)	4
Color - Resin	Black
Durability (mating cycles max)	20,000
First Mate / Last Break	No
Glow-Wire Compliant	No
Guide to Mating Part	No
Keying to Mating Part	None
Lock to Mating Part	None
Mated Height (in)	0.220 In
Mated Height (mm)	5.60 mm
Material - Plating Mating	Gold
Material - Plating Termination	Gold
Material - Resin	High Temperature Thermoplastic
Number of Rows	1
Orientation	Right Angle
PCB Locator	No
PCB Retention	Yes
Packaging Type	Embossed Tape on Reel
Pitch - Mating Interface (in)	0.079 In
Pitch - Mating Interface (mm)	2.00 mm
Plating min: Mating (µin)	40
Plating min: Mating (µm)	1.00
Polarized to Mating Part	No
Polarized to PCB	No
Shrouded	No
Stackable	No
Temperature Range - Operating	-40°C to +85°C
Termination Interface: Style	Surface Mount

Electrical

Current - Maximum per Contact	3A
Voltage - Maximum	12V DC

Solder Process Data

Duration at Max. Process Temperature (seconds)	30
--	----



EU RoHS

RoHS Compliant by Exemption

REACH SVHC

Not Reviewed

Halogen-Free

Status

Halogen-Free

Need more information on product environmental compliance?

Email productcompliance@molex.com
 For a multiple part number RoHS Certificate of Compliance, [click here](#)

Please visit the [Contact Us](#) section for any non-product compliance questions.

China RoHS



Pb

Search Parts in this Series

[47282Series](#)

Lead-free Process Capability	Reflow Capable (SMT only)
Max. Cycles at Max. Process Temperature	2
Process Temperature max. C	250

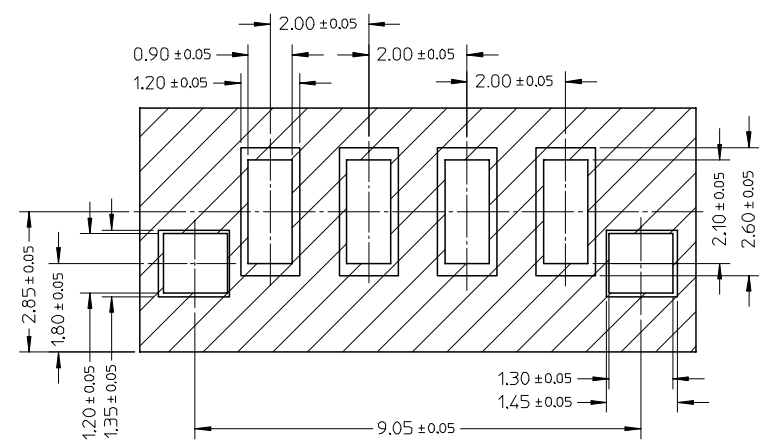
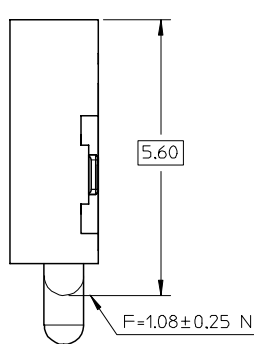
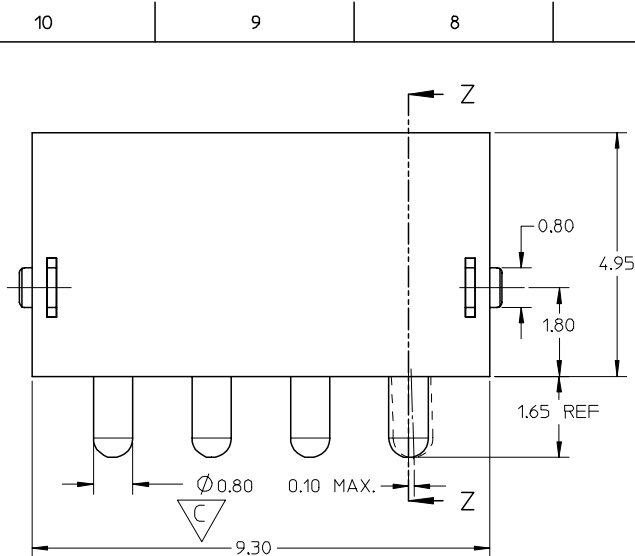
Material Info

Reference - Drawing Numbers

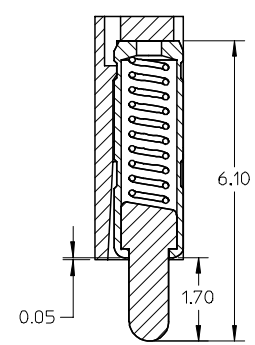
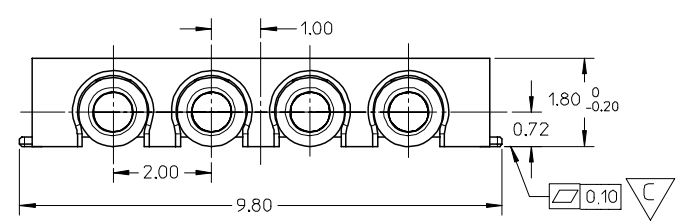
Packaging Specification	PK-47282-001
Product Specification	PS-47282-001
Sales Drawing	SD-47282-001

This document was generated on 05/25/2010

PLEASE CHECK WWW.MOLEX.COM FOR LATEST PART INFORMATION



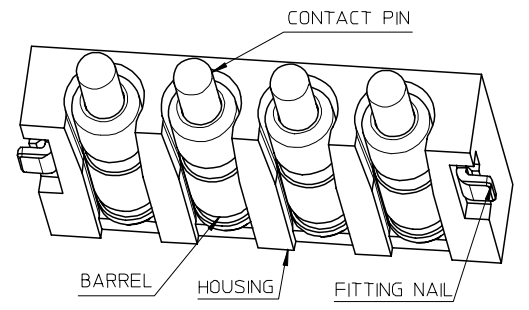
RECOMMENDED PCB LAYOUT
COMPONENTS SIDE



SECTION Z-Z

NOTES:

- 1 MATERIAL:
 - 1-1 CONTACT PIN, BARREL, FITTING NAIL : COPPER ALLOY
 - 1-2 SPRING : STAINLESS-STEEL WIRE
 - 1-3 HOUSING : HIGH TEMPERATURE THERMAL PLASTIC
- 2 FINISH:
 - 2-1 CONTACT PIN : 40μm MIN. HARD GOLD CONTACT POINT OVER 120~200μm NICKEL
 - 2-2 BARREL: OVERALL 2~12μm MIN. HARD GOLD OVER 80~160μm NICKEL
 - 2-3 FITTING NAIL : 80~160μm PURE TIN OVER 80~120μm NICKEL
- 3 MECHANICAL SPECIFICATION:
 - 3-1 USE RETURN FORCE AS SPRING FORCE
 - 3-2 DURABILITY MATED 20,000 TIMES AND STILL MEET ELECTRICAL CHARACTERISTICS
 - 3-3 FULL STROKE 1.65 MM
- 4 ELECTRICAL SPECIFICATION:
 - 4-1 RATED VOLTAGE (PER CONTACT) : 12 VOLTS MAX.
 - 4-2 RATED CURRENT (PER CONTACT) : 1 AMPS WITH A MAX. 3 AMPS
 - 4-3 CONTACT RESISTANCE: 30 MILLIOHMS MAX. BEFORE TEST AND 60 MILLIOHMS MAX. AFTER TEST AT 1 MM WORKING STROKE
 - 4-4 INSULATION RESISTANCE : 100 MEGAOHMS MIN.
- 5 PRODUCT SPECIFICATION : PS-47282-001



NEW RELEASE EC NO: SH2006-0104 DRWN: XJU CHKD: YJU APPR: GCHEN A	2005/11/08 2005/11/10 DESCRIPTION REV	QUALITY SYMBOLS	GENERAL TOLERANCES (UNLESS SPECIFIED)		DIMENSION STYLE MM ONLY		SCALE 10:1	DESIGN UNITS METRIC	THIRD ANGLE PROJECTION		
		▽=0 ∇C=2	mm	INCH	DRAWN BY XU XIANG	DATE 2005-08-31	TITLE ASSEMBLY 4 PIN POGO PIN CONNECTOR				
					CHECKED BY Y JWU	DATE 2005/11/07					
						APPROVED BY	DATE	MOLEX INCORPORATED MATERIAL NO. 472820001 DOCUMENT NO. SD-47282-001 SHEET NO. 1 OF 1			
			DRAFT WHERE APPLICABLE MUST REMAIN WITHIN DIMENSIONS		SIZE A3		THIS DRAWING CONTAINS INFORMATION THAT IS PROPRIETARY TO MOLEX INCORPORATED AND SHOULD NOT BE USED WITHOUT WRITTEN PERMISSION				