

PLEASE CHECK WWW.MOLEX.COM FOR LATEST PART INFORMATION

Part Number: [0671300806](#)
Status: **Active**
Description: 1.27mm (.050") Card Bus Header: One Slot, Flush Profile, Top Mount, Right Angle, SMT, with Mylar, Embossed Tape on Reel Packaging, Lead-free

Documents:

[3D Model](#) [RoHS Certificate of Compliance \(PDF\)](#)
[Drawing \(PDF\)](#)

General

Product Family	Memory Card Sockets
Series	67130
Button Type	N/A
Comments	With Mylar
Component Type	Header/Socket (Host)
Product Name	CardBus
Type	I, II

Physical

Card Detection Switch	No
Circuits (Loaded)	68
Circuits (maximum)	68
Durability (mating cycles max)	10,000
Ejector Button Side	No Ejector Button Present
Entry Angle	Horizontal
Keying to Mating Part	Yes
PC Tail Length (in)	0.000 In
PC Tail Length (mm)	0.00 mm
PCB Locator	Yes
PCB Mounting Side	Reverse
PCB Retention	Yes
PCB Thickness Recommended (in)	0.000 In
PCB Thickness Recommended (mm)	0.00 mm
Packaging Type	Embossed Tape on Reel
Pitch - Mating Interface (in)	0.050 In
Pitch - Mating Interface (mm)	1.27 mm
Pitch - Term. Interface (in)	0.025 In
Pitch - Term. Interface (mm)	0.64 mm
Ports	1
Surface Mount Compatible (SMC)	Yes
Temperature Range - Operating	-20°C to +60°C

Electrical

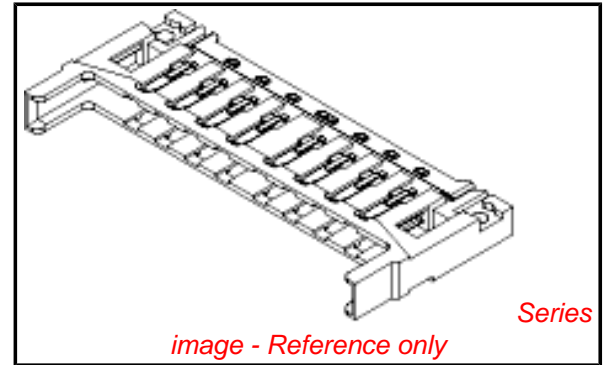
Current - Maximum per Contact	0.5A
Shielded	No
Voltage - Maximum	3.3V
Voltage Key	N/A

Solder Process Data

Duration at Max. Process Temperature (seconds)	5
Lead-free Process Capability	Wave Capable (TH only)
Max. Cycles at Max. Process Temperature	2
Process Temperature max. C	245

Material Info

Reference - Drawing Numbers



EU RoHS

**ELV and RoHS
Compliant**
**REACH SVHC
Contains SVHC: No**
**Halogen-Free
Status**

China RoHS



**Need more information on product
environmental compliance?**

Email productcompliance@molex.com
 For a multiple part number RoHS Certificate of Compliance, [click here](#)

Please visit the [Contact Us](#) section for any non-product compliance questions.

Search Parts in this Series

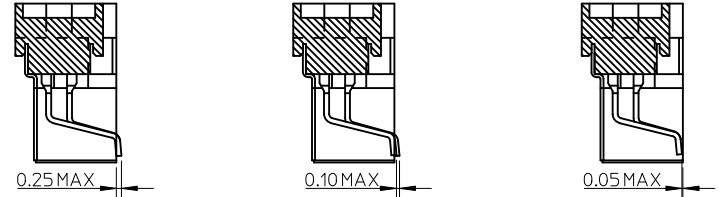
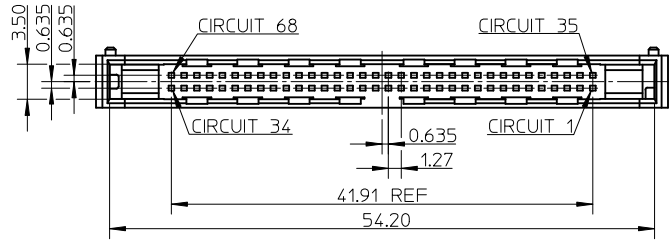
[67130Series](#)

Use With

[67121 Ejector Mechanism](#)

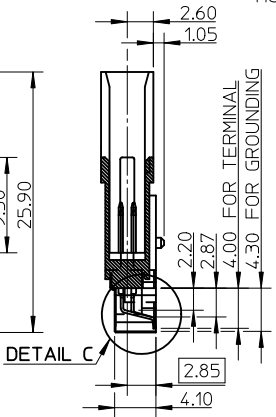
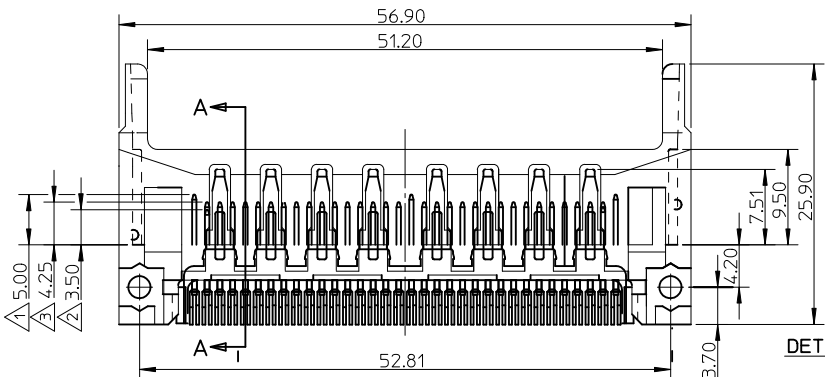
This document was generated on 04/05/2010

PLEASE CHECK WWW.MOLEX.COM FOR LATEST PART INFORMATION

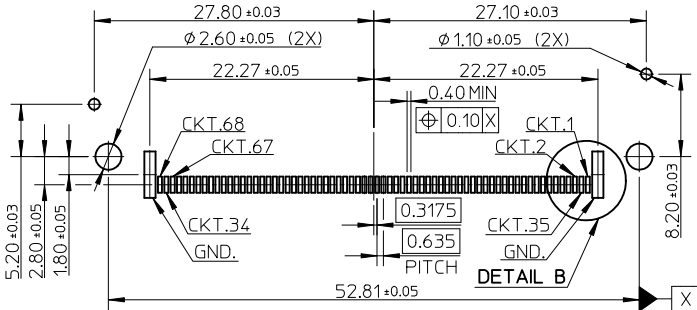


SOLDER TAIL TIP (BETWEEN THE LOWEST TIP AND HSG)
 SOLDER TAIL TIP (BETWEEN TIP AND TIP)
 SOLDER TAIL TIP (BETWEEN THE HIGHEST TIP AND HSG)

DETAIL C



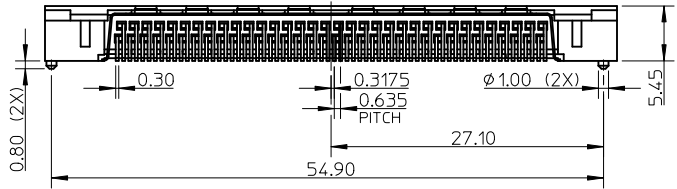
SECTION A-A



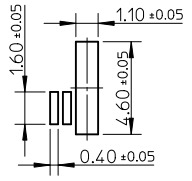
RECOMMENDED PCB LAYOUT

NOTES:

- 1. APPLIES TO CIRCUIT NUMBER: 1,17,34,35,51,68.
- 2. APPLIES TO CIRCUIT NUMBER: 36,67.
- 3. APPLIES TO CIRCUIT NUMBER: THE OTHERS.
- 4. COPLANARITY BETWEEN SOLDER TAILS IS 0.10mm MAX.
- 5. TRUE POSITION BETWEEN SOLDER TAILS IS 0.15 mm MAX.
- 6. PRODUCT SPEC: PS-67160-011.
- 7. FINISH:
 SELECTIVE GOLD (Au) IN CONTACT AREA, THICKNESS=0.38 MICROMETER MINIMUM;
 SELECTIVE PURE TIN IN SOLDER TAIL AREA, THICKNESS=2.50 MICROMETER MINIMUM;
 NICKEL (Ni) OVERALL.
- 8. THE PACKAGE OF 67130-0801 PER PK-67130-002, 67130-0806 PER PK-67130-003, 67130-0808 PER PK-67130-001.
- 9. DATE CODE:YYWW(YEAR/WEEK) FOR 67130-0806
- 10. PRODUCT COMPLIANT TO RoHS DIRECTIVE 2002/95/EC AND ELV 2000/53/EC.



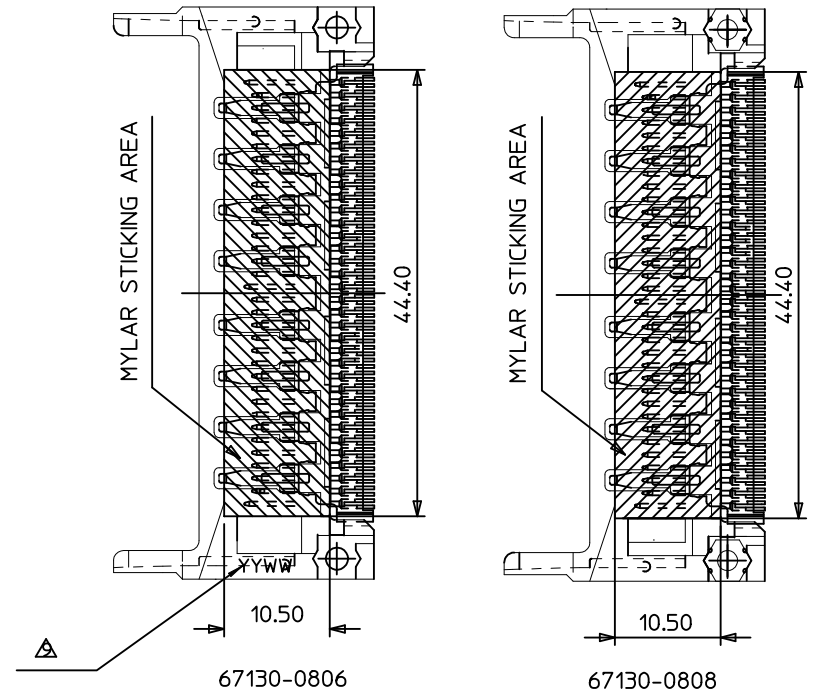
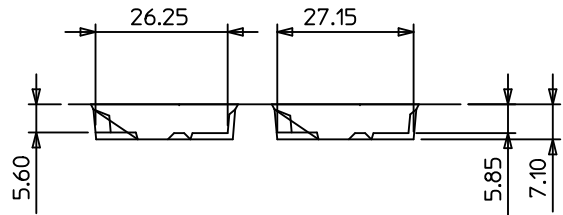
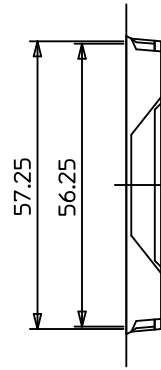
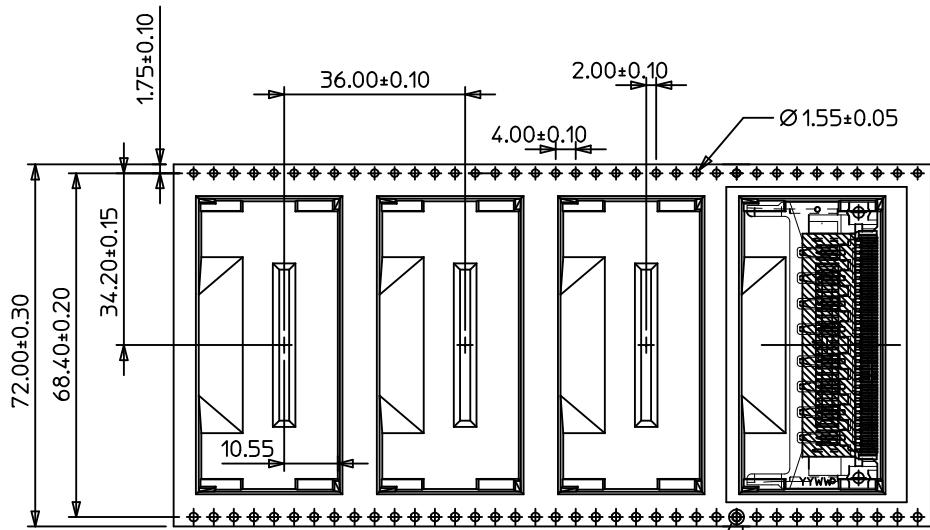
67130-0801



DETAIL B

67130-0808	WITH MYLAR, M2 HEX NUTS
67130-0806	WITH MYLAR
67130-0801	W/O MYLAR
MATERIAL NO.	DESCRIPTION

ADD DIMENSIONS EC NO: SH2010-0390 DRWN:XQZHANG 2010/04/13 CHKD:GILLI 2010/04/13 APPR:XJSONG 2010/05/18	QUALITY SYMBOLS $F_{\Delta} = 0$ $F_{\square} = 0$ $F_{\nabla} = 0$	GENERAL TOLERANCES (UNLESS SPECIFIED)		DIMENSION STYLE MM ONLY		SCALE 1:1	DESIGN UNITS METRIC	THIRD ANGLE PROJECTION	
		mm	INCH	DRAWN BY	DATE	TITLE			
		4 PLACES ± ---	± ---	JACK	2004/11/11	CARD BUS HEADER ASS'Y FOR 3.3V SMT STANDARD TYPE LEAD-FREE			
		3 PLACES ± ---	± ---	CHECKED BY	DATE	MOLEX INCORPORATED			
2 PLACES ± 0.25	± ---	APPROVED BY	DATE	SEE TABLE		DOCUMENT NO.		SHEET NO.	
1 PLACE ± 0.25	± ---	XJSONG	2010/04/14	THIS DRAWING CONTAINS INFORMATION THAT IS PROPRIETARY TO MOLEX INCORPORATED AND SHOULD NOT BE USED WITHOUT WRITTEN PERMISSION		SD-67130-004		1 OF 2	
ANGULAR ± 3 °		DRAFT WHERE APPLICABLE MUST REMAIN WITHIN DIMENSIONS		SIZE A3					



DETAIL A

SEE SHEET 1 EC NO: SH2010-0390 DRWN: XZHZHANG CHKD: GLLI APPR: XJSONG	2010/04/13 2010/04/13 2010/05/18	DESCRIPTION REV	QUALITY SYMBOLS	GENERAL TOLERANCES (UNLESS SPECIFIED)	DIMENSION STYLE	SCALE	DESIGN UNITS	THIRD ANGLE PROJECTION
			$\nabla_A = 0$ $\nabla_C = 0$ $\nabla_F = 0$	mm INCH 4 PLACES ± --- ± --- 3 PLACES ± --- ± --- 2 PLACES ± 0.25 ± --- 1 PLACE ± 0.25 ± --- ANGULAR ± 3°	MM ONLY	1:1	METRIC	
			DRAFT WHERE APPLICABLE MUST REMAIN WITHIN DIMENSIONS	DRAWN BY: JACK DATE: 2004/11/11 CHECKED BY: DATE: APPROVED BY: DATE: 2010/04/14 MATERIAL NO.	TITLE CARD BUS HEADER ASS'Y FOR 3.3V SMT STANDARD TYPE LEAD-FREE	MOLEX INCORPORATED	SHEET NO. 2 OF 2	
			SEE SHEET 1	SEE SHEET 1	SD-67130-004	THIS DRAWING CONTAINS INFORMATION THAT IS PROPRIETARY TO MOLEX INCORPORATED AND SHOULD NOT BE USED WITHOUT WRITTEN PERMISSION		