

PLEASE CHECK WWW.MOLEX.COM FOR LATEST PART INFORMATION

Part Number: [5031515009](#)
Status: **Active**
Description: 0.50mm (.020") Pitch FFC-to-Board Connector, Plug Jacket Cover, 50 Circuits

Documents:

Drawing (PDF)	Product Specification PS-501864-003 (PDF)
Product Specification PS-501786-003 (PDF)	RoHS Certificate of Compliance (PDF)

General

Product Family	Accessories
Series	503151
Component Type	Jacket Cover
Product Name	N/A

Physical

Circuits (Loaded)	N/A
Circuits (maximum)	50
Color - Resin	Black
Gender	Plug
Material - Resin	Polyester
Packaging Type	Bag
Polarized to Mating Part	Yes
Temperature Range - Operating	-40°C to +85°C

Electrical

Current - Maximum per Contact	0.5A
-------------------------------	------

Material Info

Reference - Drawing Numbers

Product Specification	PS-501786-003, PS-501864-003, RPS-501786-005, RPS-501864-005
Sales Drawing	SD-503151-001

EU RoHS

**ELV and RoHS
Compliant**

REACH SVHC

Contains SVHC: No

Halogen-Free

Status

Not Reviewed

China RoHS



**Need more information on product
environmental compliance?**

Email productcompliance@molex.com
For a multiple part number RoHS Certificate of
Compliance, [click here](#)

Please visit the [Contact Us](#) section for any
non-product compliance questions.

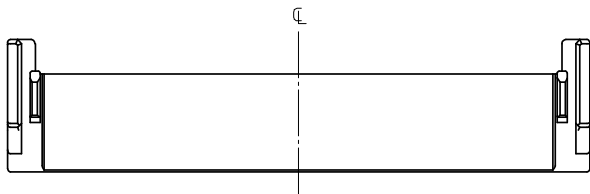
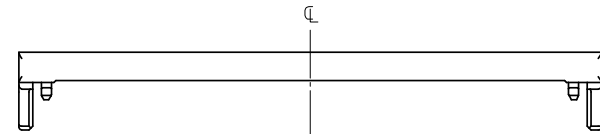
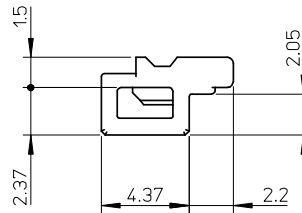
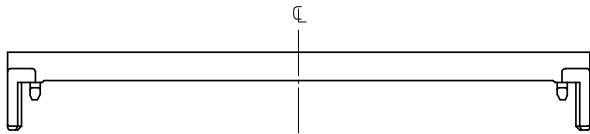
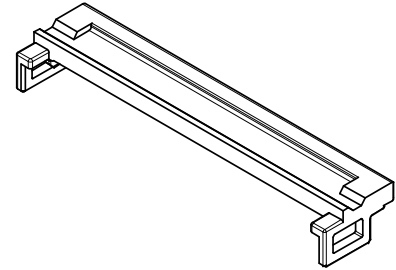
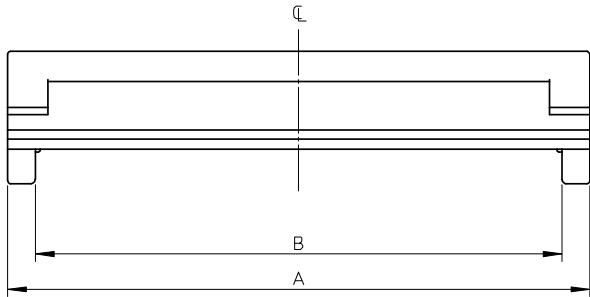
Search Parts in this Series

[503151Series](#)

Use With

[501786 FFC-to-Board Connector, 501864
FFC-to-Board Connector, 503150 Plug
Jacket](#)

ELV AND RoHS COMPLIANT.



注記 NOTE

- 適合プラグジャケット: 503150-****
APPLICABLE PLUG JACKET : 503150-****
- 材質
MATERIAL
PBT, UL94V-0, 色: 黒色
PBT, UL94V-0, COLOR: BLACK

26.2	28.96	503151-5009	50
B	A	PLASTIC BAG	CKTS.
		ORDER NO. オーダー番号	

RELEASED EC NO: O	DRWN: M.NABEI CHKD: K.MORIKAWA APPR: K.MORIKAWA	2008/07/07 2008/07/09 2008/07/10	GENERAL TOLERANCES (UNLESS SPECIFIED)		DIMENSION STYLE MM ONLY		SCALE //	DESIGN UNITS METRIC	THIRD ANGLE PROJECTION	
			10 UNDER	±0.2	DRAWN BY M.NABEI	DATE '08/07/07	TITLE 0.5 FFC TO BOARD CONN PLUG JACKET COVER			
			10 OVER 30 UNDER	±0.25	CHECKED BY K.MORIKAWA	DATE '08/07/07				
			30 OVER	±0.3	APPROVED BY H.HIRATA	DATE '08/07/07	MATERIAL NO. SEE TABLE		MOLEX INCORPORATED	
ANGULAR ±1 °		DRAFT WHERE APPLICABLE MUST REMAIN WITHIN DIMENSIONS		THIS DRAWING CONTAINS INFORMATION THAT IS PROPRIETARY TO MOLEX INCORPORATED AND SHOULD NOT BE USED WITHOUT WRITTEN PERMISSION						