



Part Number	Package	Application	Last Modified
803-RF434.0M-B	3.8 x 3.8 SMD	Wireless	Mar. 2 2007

TYPE :
Wireless RF SAW Filter



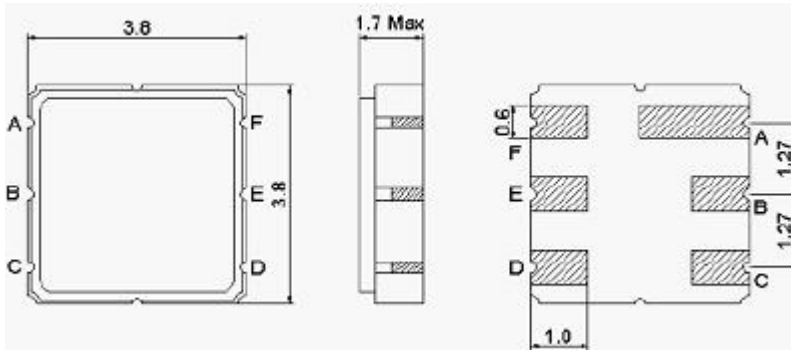
PART NUMBER :
803-RF434.0M-B

OPERATING CONDITIONS / ELECTRICAL CHARACTERISTICS

PARAMETERS	Condition	Minimum	Typical	Maximum	Units
Center Frequency (Fo)	-	-	434.0	-	MHz
Insertion Loss	432.0 ~ 436.0 MHz	-	1.5	3.5	dB
Attenuation:	Fo-200 ~ Fo-42.8 MHz	50	55	-	dB
	Fo+40 ~ Fo+200 MHz	50	55	-	
Source Impedance (single ended)*	-	-	150	-	ohm
Load Impedance (single ended)*	-	-	150	-	ohm
Amplitude Ripple	432.0 ~ 436.0 MHz	-	0.8	2.0	dBp-p
Maximum Input Power	-	-	-	0	dBm
Maximum DC Voltage	-	-	-	10	V
Operating Temperature	-	-30	-	+65	°C

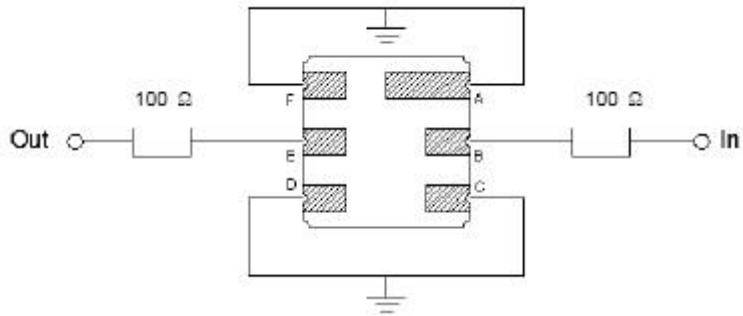
* No Matching Network (Ref. Testing Environment Circuit as shown)

PACKAGE OUTLINE (mm)



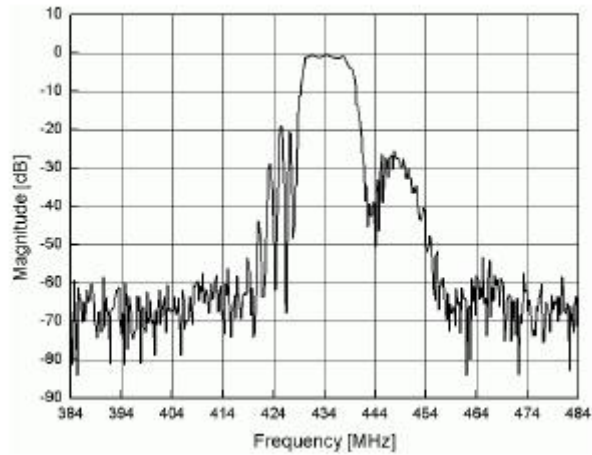
PIN LAYOUT	
A	Ground
B	In
C	Ground
D	Ground
E	Out
F	Ground

TEST FIXTURE



Source/ Load Impedance = 50 ohms

FREQUENCY RESPONSE



Oscilent Corporation - CALL **949.252.0522**

Part No.: 803-RF434.0M-B

18195 East McDermott Street , Building D , Irvine , CA 92614 , USA
 Fax: 949.252.0599 , E-Mail: Sales@Oscilent.com