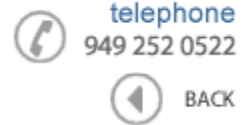




Data Sheet


 telephone
 949 252 0522


BACK

Product Category: IF SAW Filter

 Part Number
 827-IF115.0M-B

 Package
 27.0 x 12.0 Thru Hole

 Application
 Base Station & Repeater

 Last Modified
 May 24 2003

TYPE :

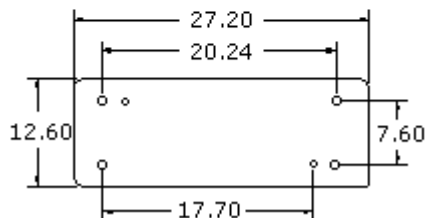
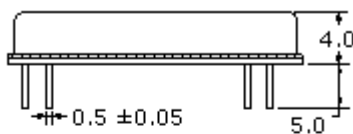
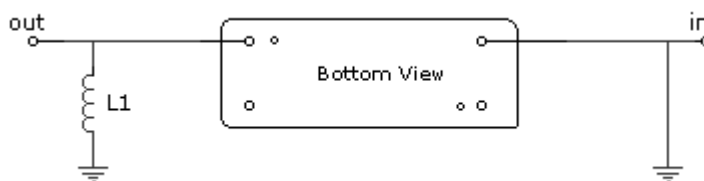
 115.0 MHz Bandpass Filter
 26.10 MHz Bandwidth

PART NUMBER :

827-IF115.0M-B**OPERATING CONDITIONS / ELECTRICAL CHARACTERISTICS**

PARAMETERS	Minimum	Typical	Maximum	Units
Center Frequency	114.91	115.00	115.09	MHz
Insertion Loss	-	23.1	25.0	dB
1dB Bandwidth	25.5	25.6	-	MHz
3dB Bandwidth	26.1	26.25	-	MHz
40dB Bandwidth	-	28.60	28.80	MHz
Passband Ripple	-	0.70	1.0	dB
Group Delay Variation	-	35	80	nsec
Absolute Delay	-	1.573	-	µsec
Ultimate Rejection	50	55	-	dB
Substrate Material	-	LN	-	-
Ambient Temperature	-	25	-	°C

* Custom SAW IF Filters available. Contact Oscilent for assistance.

PACKAGE OUTLINE (mm)**TEST FIXTURE**

L1 = 39nH

Source/Load Impedance = 50 ohms

Oscilent Corporation - CALL 949.252.0522

 17962 Sky Park Circle, Building D, Irvine, CA 92614, USA
 Fax: 949.252.0599, E-Mail: Sales@Oscilent.com

Part No.: 827-IF115.0M-B

[Crystal Oscillators](#) | [Quartz Crystal](#) | [TCXO](#) | [VCXO](#) | [IF SAW Filter](#) | [RF SAW Filter](#) | [Ceramic Resonator](#)
[Crystal Filter](#) | [Ceramic Filter](#) | [SAW Filter / SAW Devices](#) | [Site Map](#)