

**PLEASE CHECK WWW.MOLEX.COM FOR LATEST PART INFORMATION**

**Part Number:** [0190070011](#)  
**Status:** **Active**  
**Description:** Flag InsulKrimp™ Quick Disconnect, Female, for 18-22 (0.80-0.35) Wire, Box, Tab 4.75mm (.187") x 0.51mm (.020")

**Documents:**

[Drawing \(PDF\)](#) [RoHS Certificate of Compliance \(PDF\)](#)  
[Product Specification PS-19902-008 \(PDF\)](#)

**General**

Product Family	Quick Disconnects
Series	<a href="#">19007</a>
Crimp Quality Equipment	Yes
Product Name	InsulKrimp™
Type	Quick Disconnect

**Physical**

Barrel Type	Closed
Color - Resin	Natural
Flammability	94V-0
Gender	Female
Glow-Wire Compliant	No
Insulation	Nylon (PA)
Lock to Mating Part	None
Material - Metal	Brass
Material - Resin	Nylon
Orientation	Flag
Packaging Type	Bag
Polarized to Mating Part	No
Tab Thickness	0.51mm (.020")
Tab Width	4.75mm (.187")
Temperature Range - Operating	-65°C to +105°C
Wire Insulation Diameter	6.10mm (.240") max.
Wire Size AWG	18, 20, 22
Wire Size mm²	0.35 - 0.80

**Electrical**

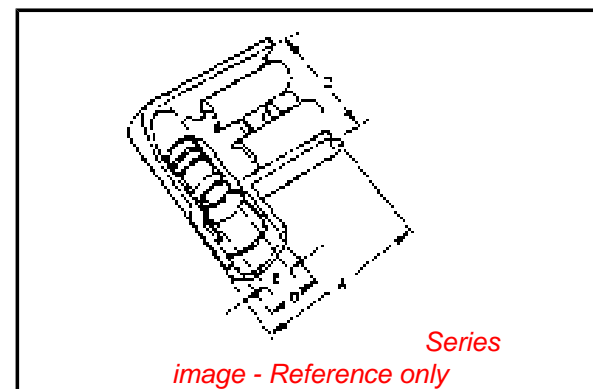
CSA	LR18689
UL	E79133
Voltage - Maximum	600V

**Material Info**

Old Part Number	AA-2222X
-----------------	----------

**Reference - Drawing Numbers**

Product Specification	PS-19902-008
Sales Drawing	CDFLG187



**EU RoHS**

**ELV and RoHS Compliant**  
**REACH SVHC**  
 Not Reviewed  
**Halogen-Free Status**  
 Not Reviewed

**China RoHS**



**Need more information on product environmental compliance?**

Email [productcompliance@molex.com](mailto:productcompliance@molex.com)  
 For a multiple part number RoHS Certificate of Compliance, [click here](#)

Please visit the [Contact Us](#) section for any non-product compliance questions.

**Search Parts in this Series**

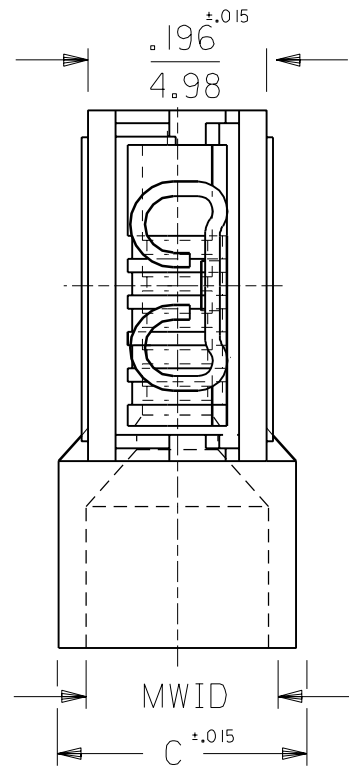
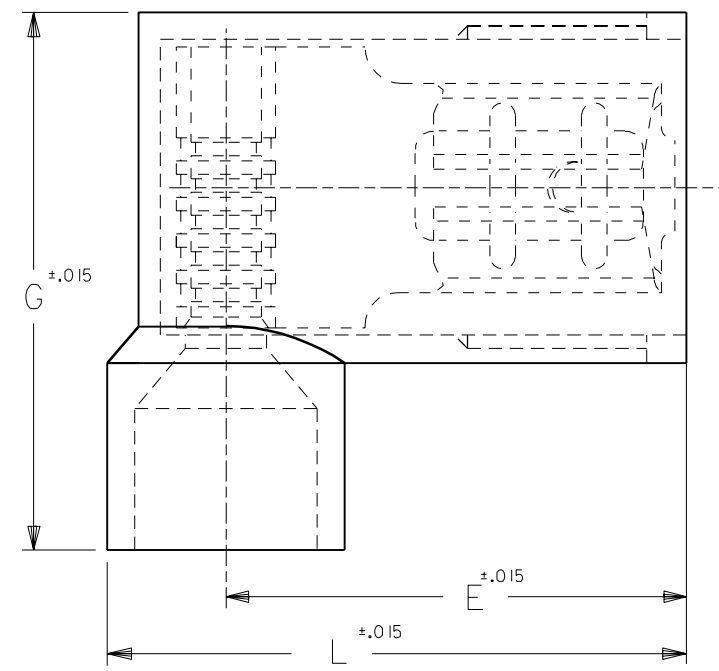
[19007Series](#)

**Application Tooling | [FAQ](#)**

*Tooling specifications and manuals are found by selecting the products below. Crimp Height Specifications are then contained in the Application Tooling Specification document.*

**Global**

Description	Product #
Hand Crimp Tool	<a href="#">0640014100</a>
Crimp Head for the AT-200™ Pneumatic Hand Tool	<a href="#">0640054100</a>



DRWG. NO. CUST. DRWG.

PART NO.	AWG	COLOR	MWID	TAB SIZE	L	G	E	C
AA-2222	22-18	RED	.176/4.47	.187x.020	.630/16.00	.585/14.86	.512/13.00	.236/5.99
AA-2222-X	22-18	RED	.240/6.10	.187x.020	.662/16.81	.625/15.88	.512/13.00	.300/7.62
AA-2223	22-18	RED	.176/4.47	.187x.032	.630/16.00	.585/14.86	.512/13.00	.236/5.99
AA-2223-X	22-18	RED	.240/6.10	.187x.032	.662/16.81	.625/15.88	.512/13.00	.300/7.62
BB-2224	16-14	BLUE	.200/5.08	.187x.020	.630/16.00	.585/14.86	.500/12.70	.260/6.60
BB-2224-X	16-14	BLUE	.265/6.73	.187x.020	.670/17.02	.625/15.88	.500/12.70	.325/8.26
BB-2225	16-14	BLUE	.200/5.08	.187x.032	.630/16.00	.585/14.86	.500/12.70	.260/6.60
BB-2225-X	16-14	BLUE	.265/6.73	.187x.032	.670/17.02	.625/15.88	.500/12.70	.325/8.26

A	TWO METRIC DIM. WERE 15.75 NOW 16.00 06/05/92 RCM
LTR.	REVISIONS

NOTES:  
 1. MWID = MAX. WIRE INSULATION DIA.  
 2. ALL DIMENSIONS = INCHES/MM

DIMENSIONS SHOWN (METRIC) INCH	
UNLESS OTHERWISE SPECIFIED TOLERANCES: ANGULAR ± 1/2°	
	INCH METRIC
3 PLACE	± .005 ± ---
2 PLACE	± .01 ± 0.13
1 PLACE	± --- ± 0.25
DRAFT WHERE APPLICABLE MUST REMAIN WITHIN DIMENSIONS	
DRWG. BY RM	CHK'D. BY JM
APP'D. BY FP	SCALE 5: 1

REVISE ONLY ON CAD SYSTEM

TITLE  
 FLAG  
 FULLY INSULATED  
 .187x.020, & .032 TAB

molex ETC INC. PINELLAS PARK, FLA. 33781 U.S.A.	SHEET NO.	DATE 07/26/89
PART NO.	DRWG. NO. CUST. DRWG.	
FILE NAME CDFLG187	THIS DRAWING CONTAINS INFORMATION THAT IS PROPRIETARY TO MOLEX-ETC INC. AND SHOULD NOT BE USED WITHOUT WRITTEN PERMISSION.	DIV. SIZE A