

PLEASE CHECK WWW.MOLEX.COM FOR LATEST PART INFORMATION

Part Number: [0003061011](#)
Status: **Active**
Overview: [standard_062](#)
Description: 1.57mm (.062") Diameter Standard .062 Pin and Socket Receptacle Housing, 1 Circuits

Documents:

[3D Model](#) [Product Specification PS-02-06 \(PDF\)](#)
[Drawing \(PDF\)](#) [RoHS Certificate of Compliance \(PDF\)](#)
[Packaging Specification \(PDF\)](#)

Agency Certification

CSA LR19980
TUV R72081037
UL E29179

General

Product Family Crimp Housings
Series [1625](#)
Comments Polarized to Mating Part
MolexKits Yes
Overview [standard_062](#)
Product Name Standard .062"

Physical

Breakaway No
Circuits (maximum) 1
Circuits Detail 1
Color - Resin Natural
Flammability 94V-2
Gender Receptacle
Glow-Wire Compliant No
Keying to Mating Part None
Lock to Mating Part Yes
Material - Resin Nylon
Number of Rows 1
Packaging Type Bag
Panel Mount No
Pitch - Mating Interface (in) 0.145 In
Pitch - Mating Interface (mm) 3.68 mm
Pitch - Term. Interface (in) 0.145 In
Pitch - Term. Interface (mm) 3.96 mm
Polarized to Mating Part Yes
Stackable No
Temperature Range - Operating -40°C to +105°C

Electrical

Current - Maximum per Contact 5A

Material Info

Old Part Number 1625-1R

Reference - Drawing Numbers

Packaging Specification PK-1625-001
Product Specification PS-02-06
Sales Drawing SD-1625-1*-* , SD-1625-1R

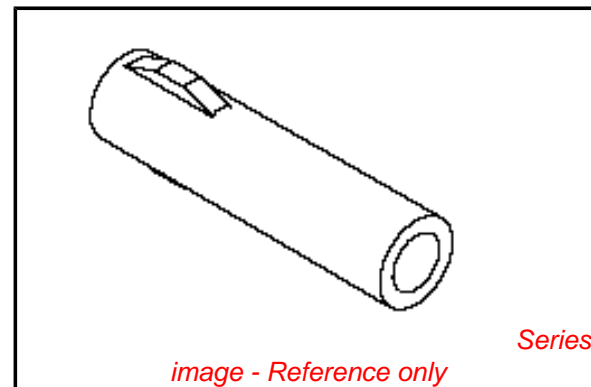


image - Reference only

EU RoHS

**ELV and RoHS
Compliant**

REACH SVHC

**Contains SVHC: No
Halogen-Free**

Status

Halogen-Free

**Need more information on product
environmental compliance?**

Email productcompliance@molex.com
For a multiple part number RoHS Certificate of
Compliance, [click here](#)

Please visit the [Contact Us](#) section for any
non-product compliance questions.

China RoHS



Search Parts in this Series

[1625Series](#)

Mates With

[1625 Plug](#)

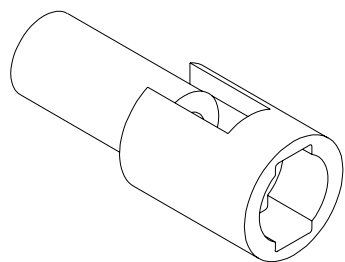
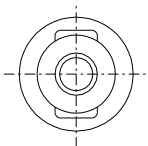
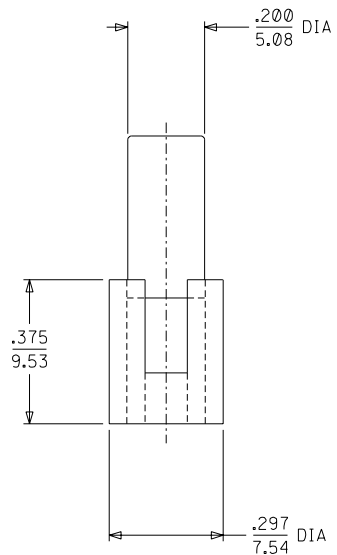
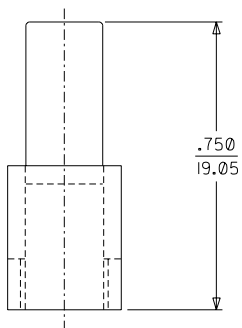
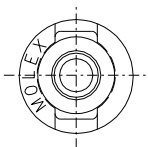
Use With

Female Crimp Terminals [1561](#)[Link:4559](#)
, [4529](#) , [2190](#) , [2189](#) , [1787](#) , [1855](#) . Male
Crimp Terminals [1560](#) , [1786](#) , [1854](#) . [1778](#)
Male PC Tail Terminals. [1779](#) Female PC
Tail Terminals

This document was generated on 06/07/2010

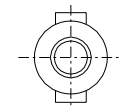
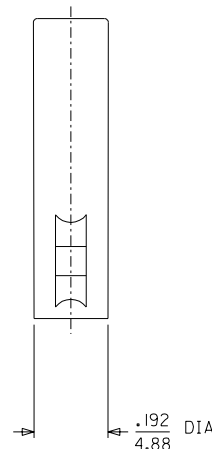
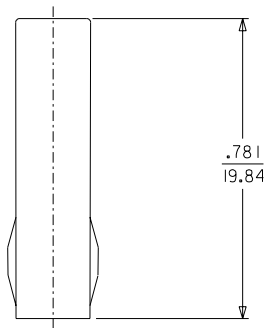
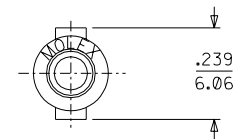
PLEASE CHECK WWW.MOLEX.COM FOR LATEST PART INFORMATION

PLUG



PLUG HOUSING

RECEPTACLE



RECEPTACLE HOUSING

REDRAWN ON CAD
 EC NO. LUCP2003-2578
 DRWN: BSYNNOTT 6/10/03
 CHK: BWIRKLUS 6/13/03
 APPR: BWIRKLUS 6/16/03

REV	DESCRIPTION
H	

QUALITY SYMBOLS	
MAJOR	▼ =
CRITICAL	▽ =

GENERAL TOLERANCES: (UNLESS SPECIFIED)	
4 PLACES	±0.--- ±.
3 PLACES	±0. ±.010
2 PLACES	±0.25 ±.014
1 PLACE	±0.35 ±.
ANGULAR: ± 1°	

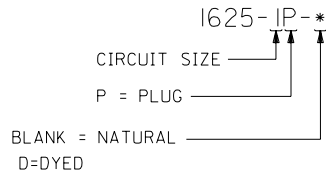
SCALE	
4 : 1	
DESIGN UNITS	
<input type="checkbox"/> mm <input checked="" type="checkbox"/> INCH	
DRAWN BY & DATE	
JBS 6/10/03	
CHECKED BY & DATE	
BW 6/13/03	
APPROVED BY & DATE	
BW 6/16/03	
CAD FILENAME	
SD1625IX1.DGN	

DIMENSIONS:	
<input type="checkbox"/> mm <input checked="" type="checkbox"/> INCH	<input type="checkbox"/> mm ONLY
TITLE: PLUG & RECEPTACLE HOUSINGS I CIRCUIT, .062/(1.57) DIA. SERIES	
MOLEX INCORPORATED	
MATERIAL NO.	SEE CHART
DRAWING NO.	SD-1625-1*-*

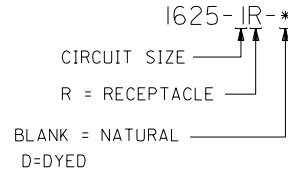
SHEET NO.	
2	H
1	H
	REV
REVISE ON CAD ONLY	
1	OF 2
SIZE	C

13	12	11	10	9	8	7	6	1625	4	3	2	1
PLUG		RECEPTACLE										
PART NO.	ENG. NO.	PART NO.	ENG. NO.									
03-06-2011	1625-IP	03-06-1011	1625-IR									
03-06-7011	1625-IP-D	03-06-6011	1625-IR-D									

PLUG LEGEND:



RECEPTACLE LEGEND:



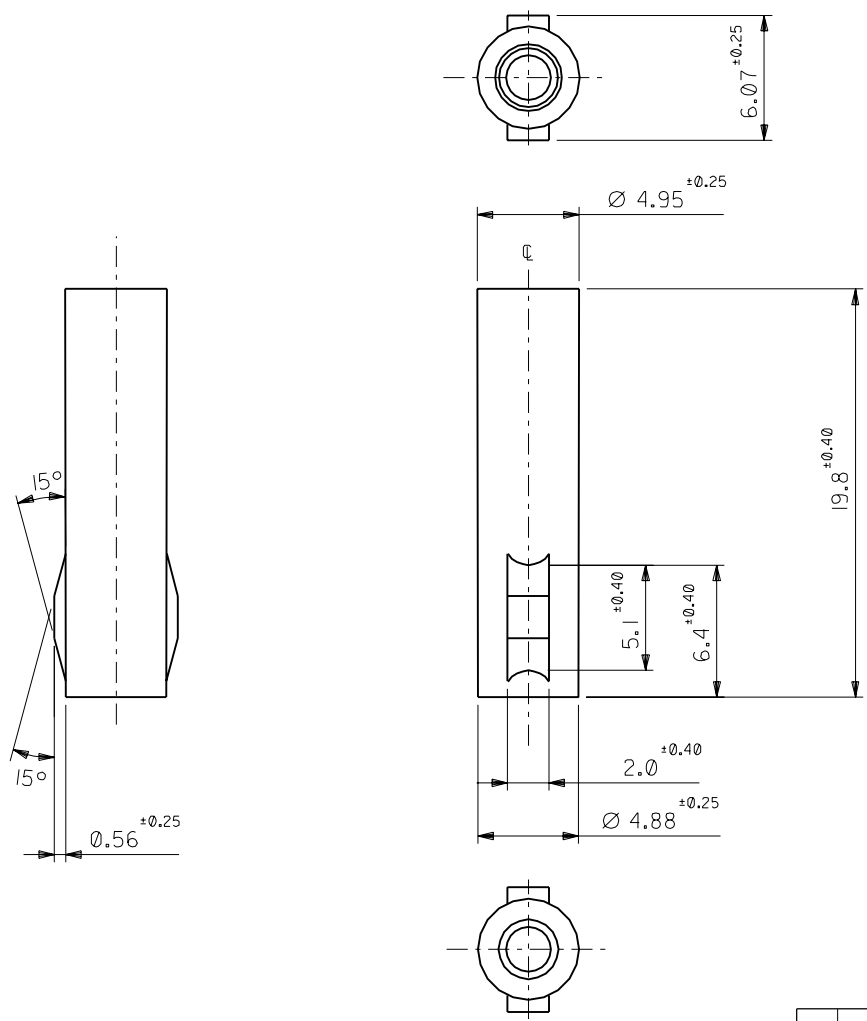
NOTES:

1. MATERIAL: NYLON, PA66, U.L. 94V-2.
2. FINISH: NONE.
3. PRODUCT SPECIFICATION: PS-02-06.
4. PACKAGING SPECIFICATION: NONE.
5. FOR USE WITH .062 SERIES TERMINALS.

				DIMENSIONS SHOWN (METRIC) INCH		∇ = 0 ▽ = 0		REVISE ONLY ON CAD SYSTEM			
				UNLESS OTHERWISE SPECIFIED TOLERANCES: ANGULAR ± 10°				TITLE			
				INCH METRIC				PLUG & RECEPTACLE HOUSINGS			
				3 PLACE ± .010 ---				1 CIRCUIT			
				2 PLACE ± .014 ± 0.25				.062/(1.57) DIA. SERIES			
				1 PLACE --- ± 0.35				MOLEX INCORPORATED			
				DRAFT WHERE APPLICABLE MUST REMAIN WITHIN DIMENSIONS				MOLEX INCORPORATED		SHEET NO. DATE	
								L15LE,ILL. 60532 U.S.A.		2 6/10/03	
								PART NO.		DRWG. NO.	
								SEE CHART		SD-1625-1-*	
				DRWG. BY JBS CHK'D. BY BW		SCALE :		FILE NAME		DIV. SIZE	
				APP'D. BY BW				SD16251X2		CP C	
				LTR.		REVISIONS		LTR.		REVISIONS	

DWG. NO. SD-1625-IR

ALL DIMENSIONS IN METRIC DO NOT SCALE DRAWING



注記
NOTE

材質: ナイロン66, 94V-2
MATERIAL: NYLON66, 94V-2

03-06-1011	1625-IR
PART NO.	ENG. NO.

材料 MATERIAL		☑中参照 REFER TO DRAWING	
仕上げ FINISH		—	
適用電線範囲 WIRE RANGE		—	
被覆外径 INS. RANGE		—	
DRAWN BY '96/07/01	CHK'D BY '96/07/01		
H.IIJIMA	M.FUKUSHIMA		
APP'D BY '96/07/01	尺度	1:1	
M.ENOMOTO	尺		

MOLEX-JAPAN CO.,LTD. 日本モレックス株式会社	
REVISE ONLY ON CAD SYSTEM	
TITLE 名称 .062 DIA. 1 CIRCUIT RECEPT. HOUSING	
DWG. NO.	REV
SD-1625-IR	B

角度 ANGLE	±30°
30以上 OVER	±0.3
10以上 OVER 30未済 UNDER	±0.25
10未済 UNDER	±0.2
一般公差 GENERAL TOLERANCES	

記号 LTR	変更内容 REVISION RECORD	DR. CHK.	日付 DATE
B	再作図 REDRAWN (JC70305)	H.I M.F	'96/07/01