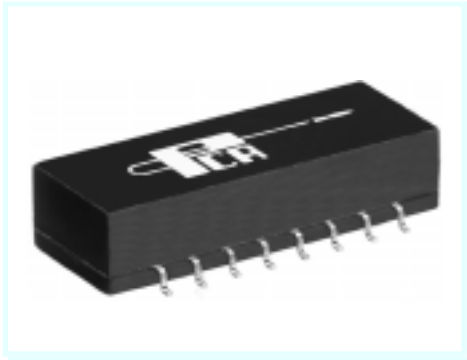


EPF8072G



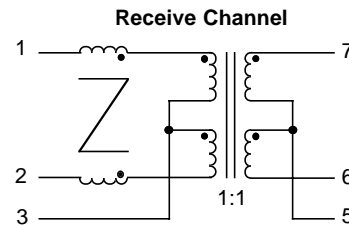
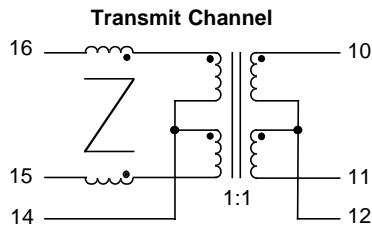
- Recommended for 10/100 Phyter •
(requiring 1:1 magnetics)
- Guaranteed to operate with 8 mA DC Bias •
- Complies with or exceeds IEEE 802.3, 10 BT/100 BX Standards •

Electrical Parameters @ 25° C

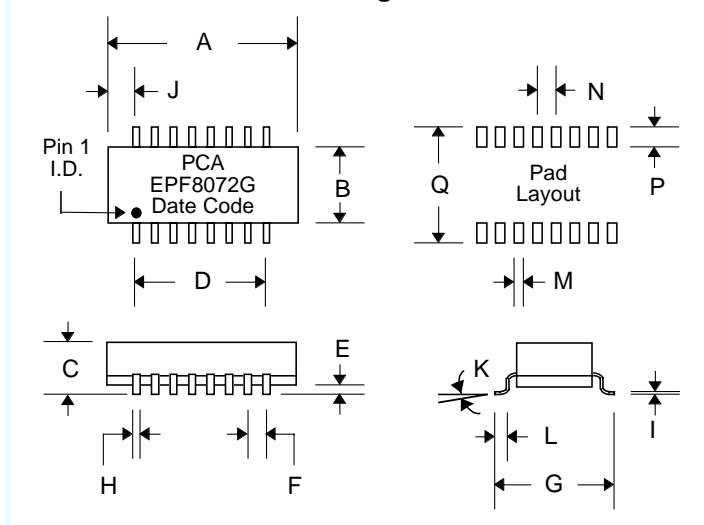
OCL @ 70°C	LE (μ H Max.)	Insertion Loss (dB Max.)				Return Loss (dB Min.)						Common Mode Rejection (dB Min.)						Crosstalk* (dB Min.)		
		1-80 MHz		80-100 MHz		1-30 MHz		30-60 MHz		60-100 MHz		1-30 MHz		30-100 MHz		100-200 MHz			200-500 MHz	
100 KHz, 0.1 Vrms 8 mA DC Bias	5 MHz, 0.1V	Xmit	Rcv	Xmit	Rcv	Xmit	Rcv	Xmit	Rcv	Xmit	Rcv	Xmit	Rcv	Xmit	Rcv	Xmit	Rcv	Xmit	Rcv	
350 μ H	0.4	-1	-1	-2	-2	-20	-20	-17	-17	-10	-10	-50	-50	-40	-40	-30	-30	-10	-10	-40

CWW : 15 pF Max. @ 100 KHz, 0.1V • **Isolation** : 1500 Vrms • **Impedance** : 100 Ω • **Rise Time** : 3.0 nS Max. • *[Between Channels]

Schematic



Package



Dimensions

Dim.	(Inches)			(Millimeters)		
	Min.	Max.	Nom.	Min.	Max.	Nom.
A	.970	.990	.980	24.64	25.15	24.89
B	.380	.400	.390	9.65	10.16	9.91
C	.223	.243	.233	5.66	6.17	5.92
D	---	---	.700	---	---	17.78
E	.010	.020	.015	.254	.508	.381
F	---	---	.100	---	---	2.54
G	.500	.520	.510	12.70	13.20	12.95
H	.016	.022	---	.406	.559	---
I	.008	.012	.010	.203	.304	.254
J	---	---	.140	---	---	3.56
K	0°	8°	---	0°	8°	---
L	.025	.045	.035	.635	1.14	.889
M	---	---	.030	---	---	.762
N	---	---	.100	---	---	2.54
P	---	---	.092	---	---	1.40
Q	---	---	.560	---	---	13.72