



Data Sheet



Product Category: RF SAW Filter

Part Number	Package	Application	Last Modified
803-RF457.6M-A	3.8 x 3.8 SMD	CDMA450 Tx	Jan. 01, 2007

TYPE :
CDMA450 (G-Band), RF-Tx SAW Filter



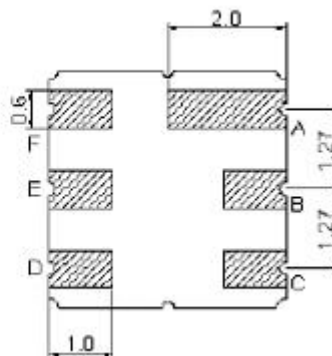
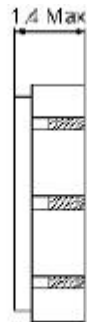
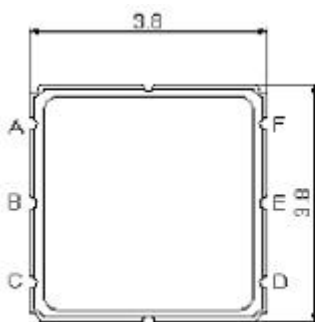
PART NUMBER :
803-RF457.6M-A

OPERATING CONDITIONS / ELECTRICAL CHARACTERISTICS

PARAMETERS	Condition	Minimum	Typical	Maximum	Units
Center Frequency (Fo)	-	-	457.6	-	MHz
Maximum Insertion Loss	455.2~ 460.0 MHz	-	1.8	2.8	dB
Stop Band Attenuation:	0.3~ 445.0 MHz	25	28	-	dB
	465.2 ~ 470.0 MHz	30	49	-	
	470.0~ 1700.0MHz	23	27	-	
	1700.0~ 2000.0 MHz	18	21	-	
Source Impedance (single ended)*	-	-	50	-	ohm
Load Impedance (single ended)*	-	-	50	-	ohm
VSWR	455.2 ~ 460.0 MHz	-	1.6	2.0	-
Maximum Input Power	-	-	-	30	dBm
Operating Temperature	-	-30	-	+80	°C

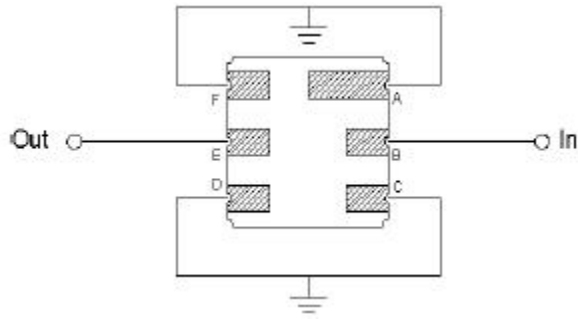
* No Matching Network

PACKAGE OUTLINE (mm)



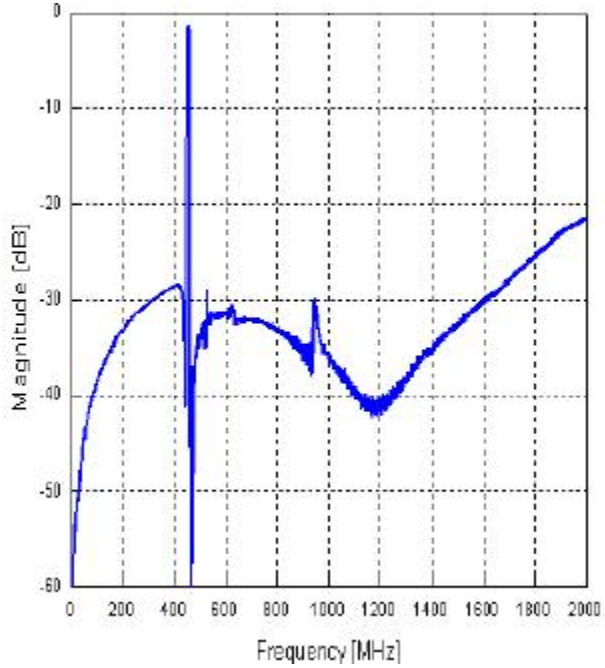
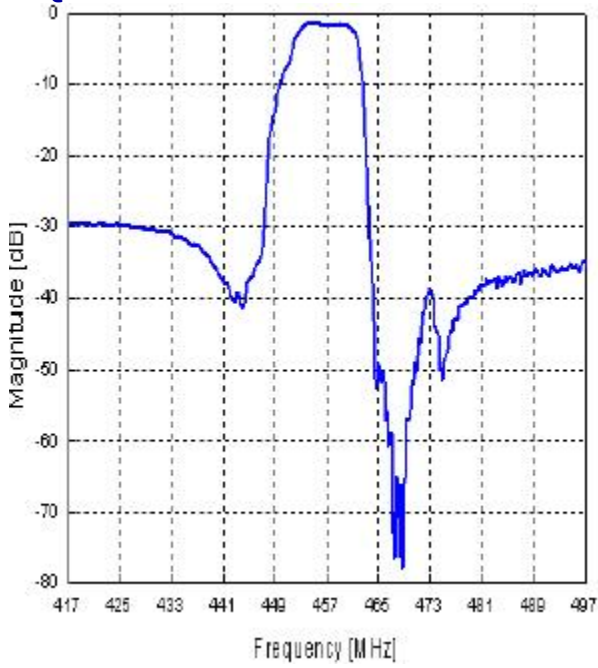
PIN LAYOUT	
A	Ground
B	In
C	Ground
D	Ground
E	Out
F	Ground

TEST FIXTURE

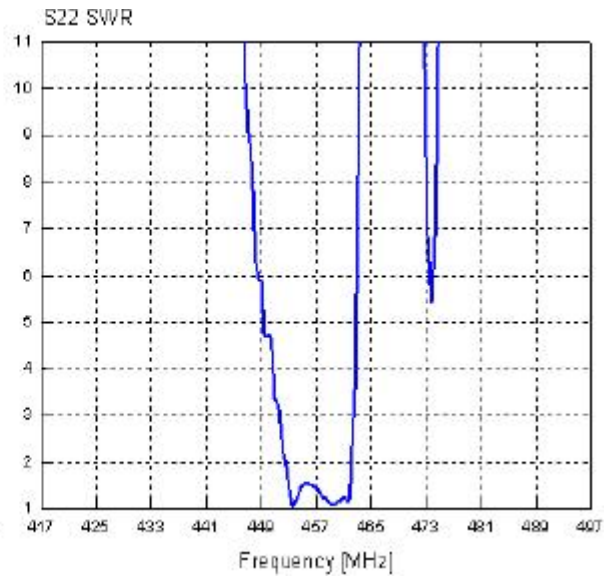
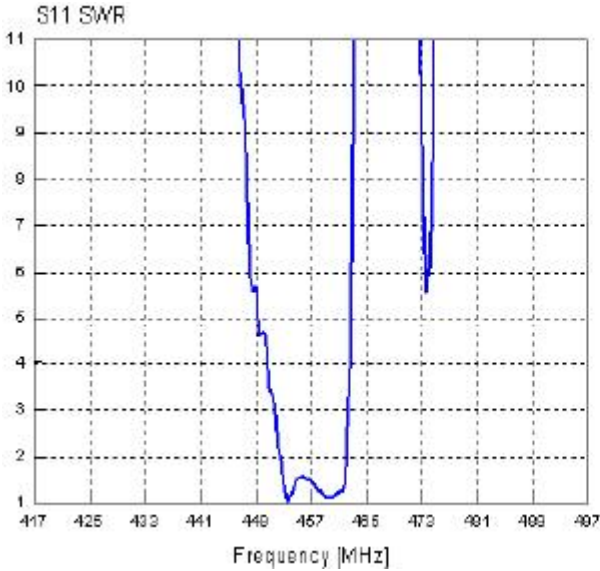


Source/ Load Impedance = 50 ohms

FREQUENCY RESPONSE



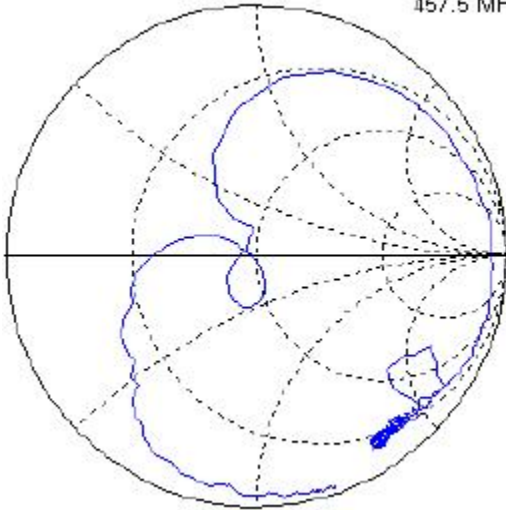
VSWR



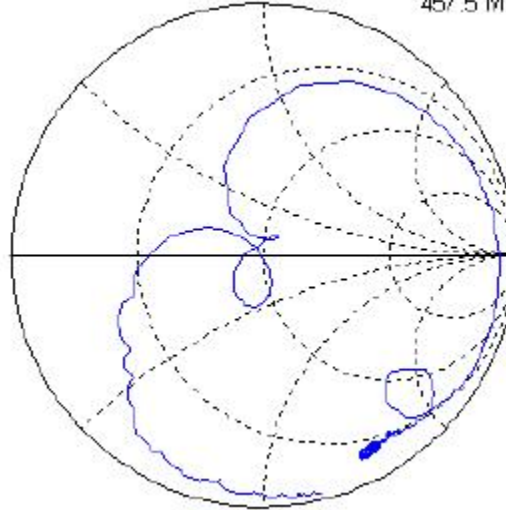
SMITH CHART

S11

38.9201-j 0.6682 S22
457.5 MHz



38.876 -j 7.4418
457.5 MHz



Oscilent Corporation - CALL **949.252.0522**

Part No.: 803-RF457.6M-A

18195 East McDermott Street , Building D , Irvine , CA 92614 , USA
Fax: 949.252.0599 , E-Mail: Sales@Oscilent.com