

PLEASE CHECK WWW.MOLEX.COM FOR LATEST PART INFORMATION

Part Number: [0913381004](#)
Status: **Active**
Overview: [rast 5 connector system](#)
Description: 5.00mm (.197") Pitch Appli-Mate RAST 5 Female Connector, Vertical, 1 Circuit, Yellow, Tin (Sn) Plating

Documents:

[Drawing \(PDF\)](#) [RoHS Certificate of Compliance \(PDF\)](#)

General

Product Family	IDT and Solder Connectors
Series	91338
Crimp Quality Equipment	Yes
Overview	rast 5 connector system
Product Name	RAST 5

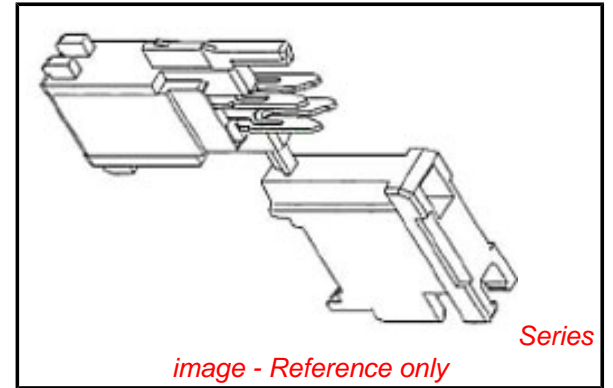
Physical

Circuits (Loaded)	1
Color - Resin	Yellow
Durability (mating cycles max)	10
Gender	Female
Glow-Wire Compliant	No
Lock to Mating Part	None
Material - Metal	Phosphor Bronze
Material - Plating Mating	Tin
Material - Plating Termination	Tin
Material - Resin	Nylon
Number of Rows	1
Packaging Type	Tray
Panel Mount	No
Pitch - Mating Interface (in)	0.197 In
Pitch - Mating Interface (mm)	5.00 mm
Plating min: Mating (µin)	200
Plating min: Mating (µm)	5
Plating min: Termination (µin)	200
Plating min: Termination (µm)	5
Stackable	Yes
Temperature Range - Operating	-20°C to +85°C
Termination Interface: Style	IDT or Pierce
Wire Size AWG	18, 20

Electrical

Current - Maximum per Contact	10A, 6A
Voltage - Maximum	250V

Material Info



EU RoHS **China RoHS**

Compliance Status

Not Reviewed

REACH SVHC

Not Reviewed

Halogen-Free

Status

Not Reviewed

Need more information on product environmental compliance?

Email productcompliance@molex.com
 For a multiple part number RoHS Certificate of Compliance, [click here](#)

Please visit the [Contact Us](#) section for any non-product compliance questions.

Search Parts in this Series

[91338Series](#)

Mates With

Appli-Mate RAST 5.0 Header [90858](#) , [90879](#)

Application Tooling | FAQ

Tooling specifications and manuals are found by selecting the products below. Crimp Height Specifications are then contained in the Application Tooling Specification document.

Global

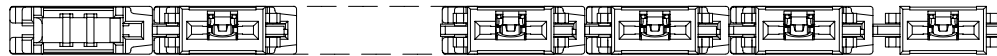
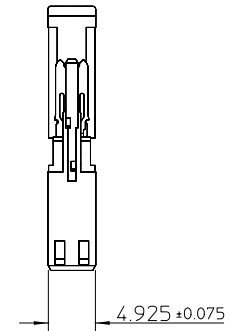
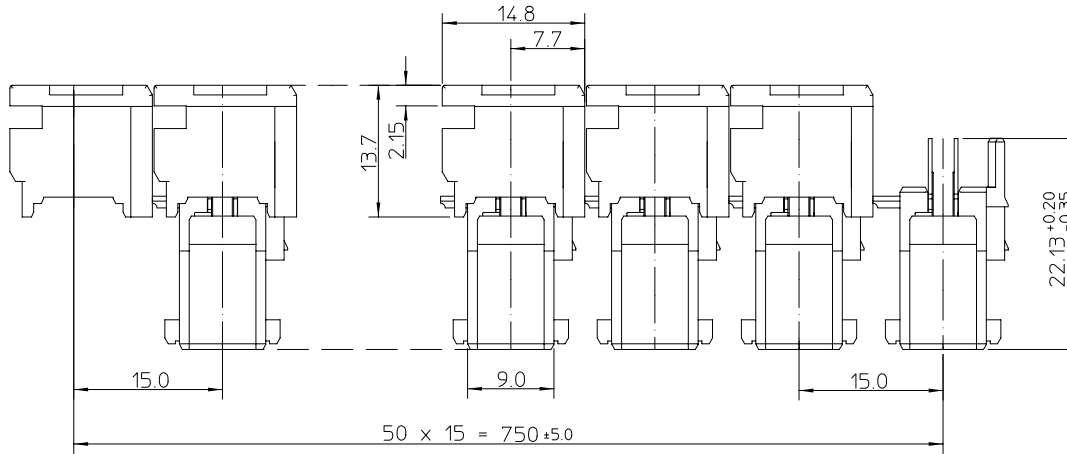
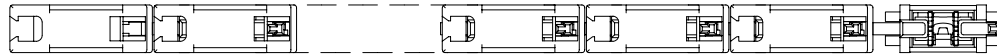
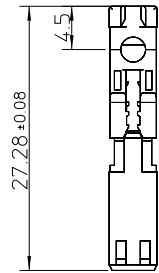
Description	Product #
-------------	-----------

RAST 5.0 Semi-Automatic Terminator Machine for Appli-Mate™ Connector 6 and 10 AMP	0623006300
Manual Arbor Press, RAST 5.0	0622017500

This document was generated on 05/27/2010

PLEASE CHECK WWW.MOLEX.COM FOR LATEST PART INFORMATION

PART NO. SEE CHART
 DWG. NO. SD-91338-006



NOTES:

- MATERIALS:
 HOUSING: POLYAMIDE (PA66) UL 94V-2
 COLOUR: SEE TABLE
 TERMINAL: PHOSPHOR BRONZE, 0.4 REF THICK
- FINISHES: TERMINAL- 5µm MIN PURE Sn ALL OVER
- PRODUCT CONFORMS TO SPECIFICATION PS-99020-0037
- NO. OF CONNECTORS PER TRAY: 2400
 NO. OF CONNECTORS PER BOX: 7200

PART NO.	COLOUR
91338-1001	NATURAL
91338-1002	BLUE
91338-1003	GREY
91338-1004	YELLOW
91338-1005	GREEN
91338-1006	BLACK
91338-1007	ORANGE

original release
 EC No. E1999-0639
 DRWN: LK 28/06/99
 CHK:
 APPR:

QUALITY SYMBOLS
 MAJOR
 CRITICAL
 DESCRIPTION
 REV

GENERAL TOLERANCES:
 (UNLESS SPECIFIED)

	mm	INCH
4 PLACES	±---	±---
3 PLACES	±---	±---
2 PLACES	±0.05	±---
1 PLACE	±0.10	±---

ANGULAR: ± 1/2°

DRAFT WHERE APPLICABLE MUST REMAIN WITHIN DIMENSIONS

SCALE 2:1
 DESIGN UNITS mm INCH
 DRAWN BY & DATE
 cconlon 99/06/28
 CHECKED BY & DATE
 P.WHITE 99/06/28
 APPROVED BY & DATE
 MWILHITE 1/07/99
 CAD FILENAME

DIMENSIONS:
 mm INCH mm ONLY
 SHT REV
 REVISIONS ON CAD ONLY

TITLE
 RAST 5 1CCT INDIRECT FEMALE

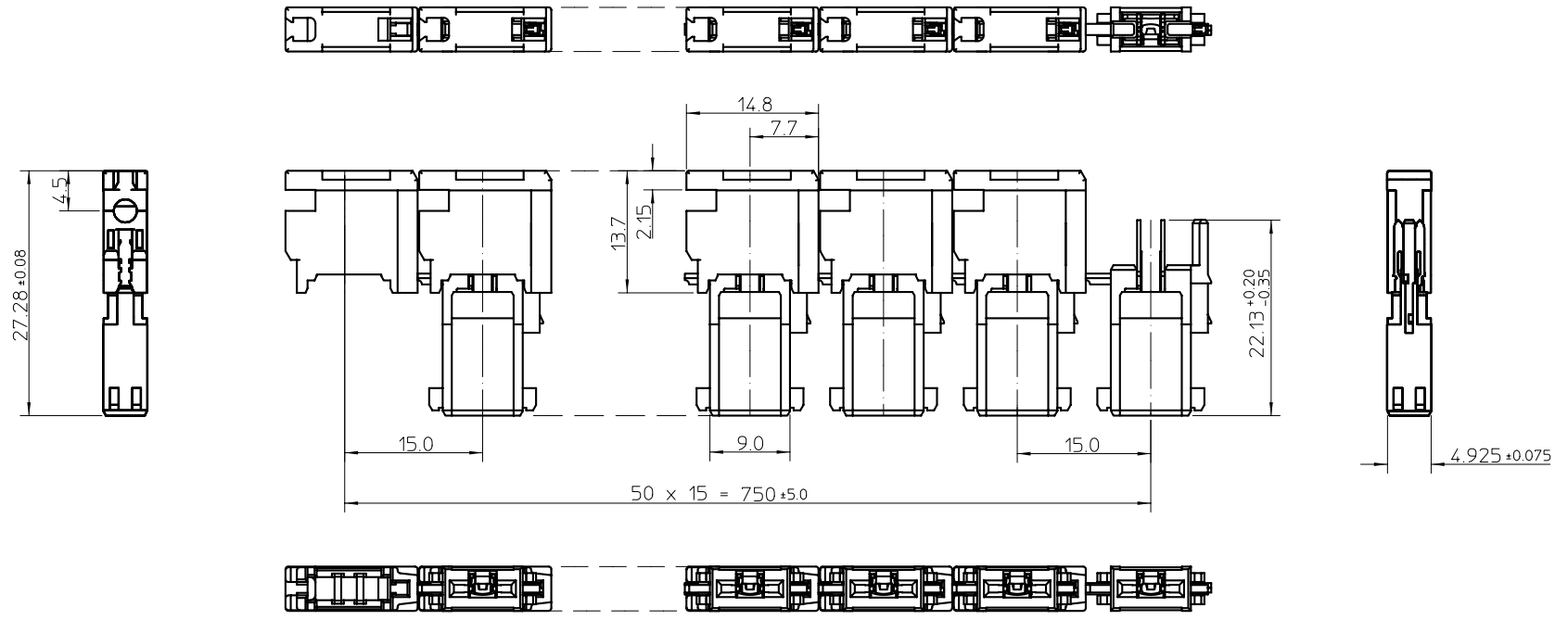
MATERIAL NO. DRAWING NO.
 SEE CHART SD-91338-006

SHEET NO.
 1 of 1

SIZE
 B

THIS DRAWING CONTAINS INFORMATION THAT IS PROPRIETARY TO MOLEX INCORPORATED AND SHOULD NOT BE USED WITHOUT WRITTEN PERMISSION.

PART NO. SD-91338-006
DWG. NO. SD-91338-006



- NOTES:
- MATERIALS:
HOUSING: POLYAMIDE (PA66) UL 94V-2
COLOUR: SEE TABLE
TERMINAL: PHOSPHOR BRONZE, 0.4 REF THICK
 - FINISHES: TERMINAL- 5µm MIN PURE Sn ALL OVER
 - PRODUCT CONFORMS TO SPECIFICATION PS-99020-0037
 - NO. OF CONNECTORS PER TRAY: 2400
NO. OF CONNECTORS PER BOX: 7200

PART NO.	COLOUR
91338-1001	NATURAL
91338-1002	BLUE
91338-1003	GREY
91338-1004	YELLOW
91338-1005	GREEN
91338-1006	BLACK
91338-1007	ORANGE

original release EC No. E1999-0639 DRWN: LK 28/06/99 CHK: APPR:	QUALITY SYMBOLS MAJOR CRITICAL	GENERAL TOLERANCES: (UNLESS SPECIFIED)	SCALE 2:1	DESIGN UNITS <input checked="" type="checkbox"/> mm <input type="checkbox"/> INCH	THIRD ANGLE PROJECTION	DIMENSIONS: <input type="checkbox"/> mm <input type="checkbox"/> INCH <input checked="" type="checkbox"/> mm ONLY	SHT	REV			
		4 PLACES ±---	3 PLACES ±---	2 PLACES ±0.05		1 PLACE ±0.10	ANGULAR: ± 1/2°	DRAWN BY & DATE ccconlon 99/06/28	CHECKED BY & DATE P.WHITE 99/06/28	TITLE RAST 5 1CCT 10A INDIRECT FEMALE	MATERIAL NO. SEE CHART
A	REV	DRAFT WHERE APPLICABLE MUST REMAIN WITHIN DIMENSIONS		THIS DRAWING CONTAINS INFORMATION THAT IS PROPRIETARY TO MOLEX INCORPORATED AND SHOULD NOT BE USED WITHOUT WRITTEN PERMISSION.							