

PLEASE CHECK WWW.MOLEX.COM FOR LATEST PART INFORMATION

Part Number: [0026034131](#)
Status: **Active**
Overview: [kk](#)
Description: 3.96mm (.156") Pitch KK® Crimp Terminal Housing - Use With Trifurcon® Terminals, Friction Ramp, 13 Circuits

Documents:

[3D Model](#) [Product Specification PS-40-02 \(PDF\)](#)
[Drawing \(PDF\)](#) [RoHS Certificate of Compliance \(PDF\)](#)

Agency Certification

CSA LR19980

General

Product Family Crimp Housings
 Series [6442](#)
 Overview [kk](#)
 Product Name KK®

Physical

Circuits (maximum) 13
 Color - Resin Natural
 Flammability 94V-2
 Gender Female
 Glow-Wire Compliant No
 Lock to Mating Part Yes
 Material - Resin Nylon
 Number of Rows 1
 Packaging Type Bag
 Panel Mount No
 Pitch - Mating Interface (in) 0.156 In
 Pitch - Mating Interface (mm) 3.96 mm
 Stackable No
 Temperature Range - Operating 0°C to +75°C

Material Info

Old Part Number 6442-R13-Z

Reference - Drawing Numbers

Product Specification PS-40-02
 Sales Drawing SD-6442

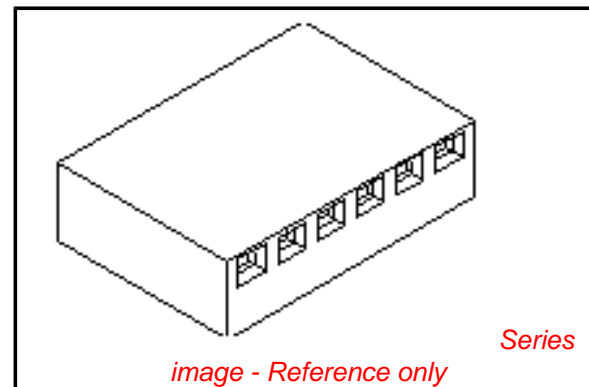


image - Reference only

EU RoHS

ELV and RoHS Compliant
REACH SVHC
 Not Reviewed
Halogen-Free Status
Not Reviewed

China RoHS



Need more information on product environmental compliance?

Email productcompliance@molex.com
 For a multiple part number RoHS Certificate of Compliance, [click here](#)

Please visit the [Contact Us](#) section for any non-product compliance questions.

Search Parts in this Series

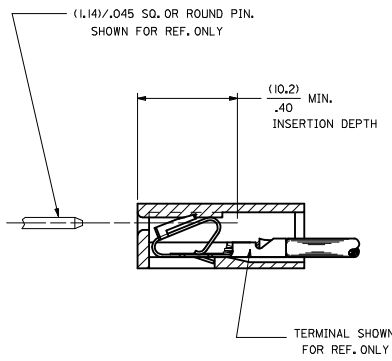
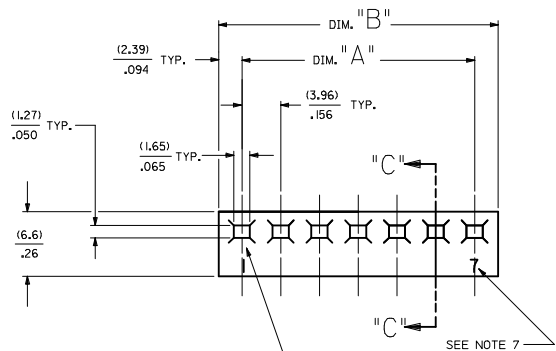
[6442Series](#)

Mates With

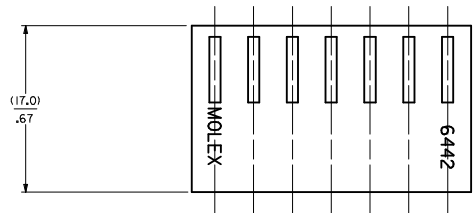
Molex 3.96mm (.156") pitch KK® headers

Use With

[6838](#) and [7258](#) KK® Trifurcon crimp terminals



SECTION "C-C"



NO. OF CKT'S.	DIM. A	DIM. B
1		(4.78+.18)
2	(3.96+.13)	(8.74+.18)
3	.156+.005	.344+.007
4	(7.92+.13)	(12.70+.18)
5	.312+.005	.500+.007
6	(11.89+.13)	(16.66+.18)
7	.468+.005	.656+.007
8	(15.85+.13)	(20.62+.18)
9	.624+.005	.812+.007
10	(19.81+.13)	(24.59+.18)
11	.780+.005	.968+.007
12	(23.77+.13)	(28.55+.18)
13	.936+.005	1.124+.007
14	(27.74+.25)	(32.51+.30)
15	1.092+.010	1.280+.012
16	(31.70+.25)	(36.47+.30)
17	1.248+.010	1.436+.012
18	(35.66+.25)	(40.44+.30)
19	1.404+.010	1.592+.012
20	(39.62+.25)	(44.40+.30)
21	1.560+.010	1.748+.012
22	(43.59+.25)	(48.36+.30)
23	1.716+.010	1.904+.012
24	(47.55+.30)	(52.32+.36)
	1.872+.012	2.060+.014
	(51.51+.36)	(56.29+.41)
	2.028+.014	2.216+.016
	(55.47+.36)	(60.25+.41)
	2.184+.014	2.372+.016
	(59.44+.36)	(64.21+.41)
	2.340+.014	2.528+.016
	(63.40+.36)	(68.17+.41)
	2.496+.014	2.684+.016
	(67.36+.36)	(72.14+.41)
	2.652+.014	2.840+.016
	(71.32+.36)	(76.10+.41)
	2.808+.014	2.996+.016
	(75.29+.46)	(80.06+.51)
	2.964+.018	3.152+.020
	(79.25+.46)	(84.02+.51)
	3.120+.018	3.308+.020
	(83.21+.46)	(87.99+.51)
	3.276+.018	3.464+.020
	(87.17+.46)	(91.95+.51)
	3.432+.018	3.620+.020
	(91.14+.46)	(95.91+.51)
	3.588+.018	3.776+.020

- NOTES:
1. MATERIAL A: NYLON 6/6 UL94V-2. COLOR: NATURAL
 2. FINISH: N/A
 3. THIS PART COMPLIES WITH PRODUCT SPECIFICATION PS-40-02.
 4. SEE SHEET 2 FOR OPTIONS.
 5. HOUSING SHOWN ABOVE IS STANDARD HOUSING WITH NO OPTIONS.
 6. THIS HOUSING FOR USE WITH TERMINAL NO.,
6438-* (18-22 GA) WITH (2.79)/.110 MAX. INSULATION DIA.
6838-* (18-24 GA) WITH (2.79)/.110 MAX. INSULATION DIA.
7258-* (22-26 GA) WITH (1.65)/.065 MAX. INSULATION DIA.
 7. CIRCUIT SIZE MOLDED ON 4 THRU 24 CIRCUIT HOUSINGS ONLY.
 8. THIS PART CONFORMS TO CLASS B REQUIREMENTS OF COSMETIC SPECIFICATION PS-45499-002.

HOUSING OPTIONS

CODE	HOOKS	SIDE HOOKS	RAMP
BLANK	NONE	NONE	NONE
A	NONE	YES	NONE
R	NONE	NONE	FRICITION
B	NONE	NONE	TYPE B
C	NONE	NONE	TYPE C

6442-* N - * - * - *

VOLTAGE RATING OPTION
BLANK=NONE
V= '250 VAC' ON HOUSING

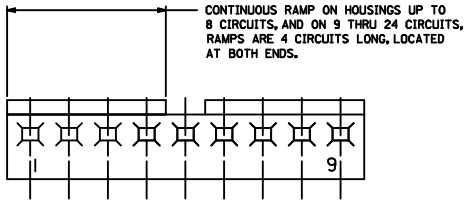
MAT'L OPTION
BLANK= MATERIAL A (SEE NOTE 1)

MOLDED VOID CODE
Z=NO VOIDS
A=CKT. 1 VOID,
B=CKT. 2 VOID, ETC.
5I=1ST MULTIPLE VOID,
52=2ND MULTIPLE VOID, ETC.

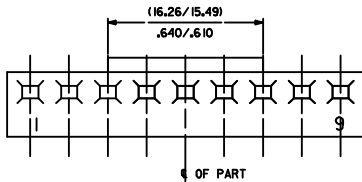
NO. OF CKT'S.

REMOVE D OPTION EC NO: UCP2009-3148 DRAWN BY: DRWNK/PPER CHKD BY: CHYK/SJUSEK APP: FSN/TH	QUALITY SYMBOLS	GENERAL TOLERANCES (UNLESS SPECIFIED)	DIMENSION STYLE	SCALE	DESIGN UNITS	THIRD ANGLE PROJECTION
	4 PLACES ± --- ± --- 3 PLACES ± --- ± .010 2 PLACES ± 0.25 ± .014 1 PLACE ± 0.36 ± --- ANGULAR ±1/2°	MM/IN	---	INCH	---	INCH
DRAFT WHERE APPLICABLE MUST REMAIN WITHIN DIMENSIONS		MATERIAL NO. SEE CHART		DOCUMENT NO. SD-6442		TITLE: KK (3.96)/.156 TRIFURCON CRIMP TERMINAL HOUSING 6442 SERIES MOLEX INCORPORATED SHEET NO. 1 OF 4

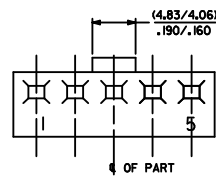
THIS DRAWING CONTAINS INFORMATION THAT IS PROPRIETARY TO MOLEX INCORPORATED AND SHOULD NOT BE USED WITHOUT WRITTEN PERMISSION



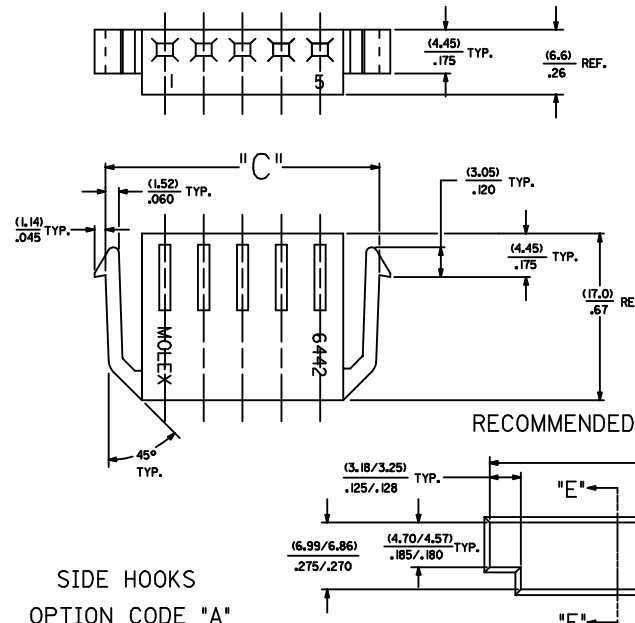
STD. RAMP OPTION CODE "R"



SELECTIVE RAMP OPTION CODE "C"

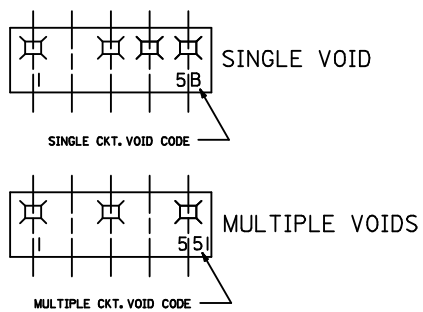
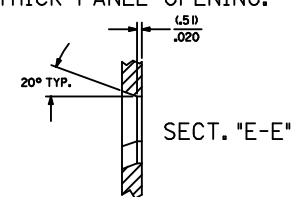


SELECTIVE RAMP OPTION CODE "B"

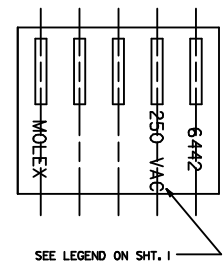


SIDE HOOKS OPTION CODE "A"

NO. OF CKT'S.	DIM. "C"	DIM. "D"
2	(16.48/15.60) .643/.614	(15.47/15.34) .609/.604
3	(20.45/19.56) .805/.770	(19.43/18.30) .765/.760
5	(28.37/27.48) 1.117/1.082	(27.36/27.23) 1.077/1.072



MOLDED VOIDS
SEE LEGEND ON SHT. 1
SEE CHART FOR VOID CKT. LOCATIONS



OPT. VOLTAGE RATING

SEE SHEET 1 IEC NO. UCP2009-3148 DRAWN BY DRANKIPPER CHKD BY SSOUSEK APPR. BY SMITH 2009/07/13 2009/08/05	QUALITY SYMBOLS	GENERAL TOLERANCES (UNLESS SPECIFIED)	DIMENSION STYLE	SCALE	DESIGN UNITS	THIRD ANGLE PROJECTION	
	▽=0 ▽=0	mm INCH 4 PLACES ± .010 3 PLACES ± .010 2 PLACES ± 0.25 ± .014 1 PLACE ± 0.36 ± .014 ANGULAR ± 1/2°	MM/IN	---	INCH	DRAWN BY POLGAR 1986/12/05 CHECKED BY DATE PATEL 1986/12/05 APPROVED BY DATE LENZ 1986/12/05	TITLE KK (3.96)/156 TRIFURCON CRIMP TERMINAL HOUSING 6442 SERIES
	DRAFT WHERE APPLICABLE MUST REMAIN WITHIN DIMENSIONS	MATERIAL NO. SEE CHART SIZE D	MOLEX INCORPORATED DOCUMENT NO. SD-6442	SHEET NO. 2 OF 4			
	THIS DRAWING CONTAINS INFORMATION THAT IS PROPRIETARY TO MOLEX INCORPORATED AND SHOULD NOT BE USED WITHOUT WRITTEN PERMISSION						

6442-N-*				6442-RN-*				6442-RN-*				6442-RND-*				6442-BN-*				6442-CN-*			
PART NO.	ENG. NO.	VOIDS		PART NO.	ENG. NO.	VOIDS		PART NO.	ENG. NO.	VOIDS		PART NO.	ENG. NO.	VOIDS		PART NO.	ENG. NO.	VOIDS		PART NO.	ENG. NO.	VOIDS	
26-03-3011	6442-1-Z			26-03-4011	6442-R1-Z							26-03-7021	6442-R1D-Z										
26-03-3021	6442-2-Z			26-03-4020	6442-R2-Z							26-03-7031	6442-R2D-Z										
26-03-3031	6442-3-Z			26-03-4030	6442-R3-Z							26-03-7041	6442-R3D-Z										
26-03-3041	6442-4-Z			26-03-4041	6442-R4-Z								6442-R4D-Z										
26-03-3051	6442-5-Z			26-03-4050	6442-R5-Z								6442-R5D-Z										
26-03-3061	6442-6-Z			26-03-4061	6442-R6-Z								6442-R6D-Z										
26-03-3071	6442-7-Z			26-03-4070	6442-R7-Z							26-03-7071	6442-R7D-Z										
26-03-3081	6442-8-Z			26-03-4081	6442-R8-Z								6442-R8D-Z										
26-03-3091	6442-9-Z			26-03-4090	6442-R9-Z							26-03-7091	6442-R9D-Z										
26-03-3101	6442-10-Z			26-03-4101	6442-R10-Z								6442-R10D-Z										
26-03-3111	6442-11-Z			26-03-4111	6442-R11-Z								6442-R11D-Z										
26-03-3121	6442-12-Z			26-03-4121	6442-R12-Z							26-03-7121	6442-R12D-Z										
26-03-3131	6442-13-Z			26-03-4131	6442-R13-Z								6442-R13D-Z										
26-03-3141	6442-14-Z			26-03-4141	6442-R14-Z								6442-R14D-Z										
26-03-3151	6442-15-Z			26-03-4151	6442-R15-Z								6442-R15D-Z										
26-03-3161	6442-16-Z			26-03-4161	6442-R16-Z								6442-R16D-Z										
26-03-3171	6442-17-Z			26-03-4171	6442-R17-Z							26-03-7171	6442-R17D-Z										
26-03-3181	6442-18-Z			26-03-4181	6442-R18-Z								6442-R18D-Z										
26-03-3191	6442-19-Z			26-03-4191	6442-R19-Z								6442-R19D-Z										
26-03-3201	6442-20-Z			26-03-4201	6442-R20-Z								6442-R20D-Z										
26-03-3211	6442-21-Z			26-03-4211	6442-R21-Z								6442-R21D-Z										
26-03-3221	6442-22-Z			26-03-4221	6442-R22-Z								6442-R22D-Z										
26-03-3231	6442-23-Z			26-03-4231	6442-R23-Z								6442-R23D-Z										
26-03-3241	6442-24-Z			26-03-4241	6442-R24-Z								6442-R24D-Z										
	6442-15-B	2		26-03-4043	6442-R4-C	3						26-03-7042	6442-R4D-B	2									
	6442-9-B	2		26-03-4055	6442-R5-E	5						26-03-7072	6442-R7D-C	3									
	6442-12-F	6		26-03-4065	6442-R6-E	5						26-03-7092	6442-R9D-B	2									
	6442-7-51	1,7		26-03-4086	6442-R8-F	6						26-03-7093	6442-R9D-E	5									
	6442-9-51	1,9		26-03-4097	6442-R9-G	7						26-03-7122	6442-R12D-E	5									
	6442-9-52	2,9		26-03-4108	6442-R10-H	8						26-03-7172	6442-R17D-E	5									
	6442-8-B	2		26-03-4120	6442-R12-J	10																	
	6442-8-F	6		26-03-4157	6442-R15-G	7																	
	6442-10-D	4		26-03-4073	6442-R7-C	3																	
	6442-5-B	2		26-03-4094	6442-R9-D	4																	
	6442-10-B	2		26-03-4096	6442-R9-F	6																	
	6442-5-C	3		26-03-4092	6442-R9-B	2																	
	6442-13-B	2		26-03-4064	6442-R6-D	4																	
	6442-11-E	5		26-03-4075	6442-R7-E	5																	
				26-03-4095	6442-R9-E	5																	
				26-03-4085	6442-R8-E	5																	
				26-03-4072	6442-R7-B	2																	
				26-03-4063	6442-R6-C	3																	
				26-03-4062	6442-R6-B	2																	
				26-03-4125	6442-R12-E	5																	
				26-03-4123	6442-R12-C	3																	
				26-03-4076	6442-R7-F	6																	
				26-03-4129	6442-R12-1	9																	
				26-03-4143	6442-R14-C	3																	
				26-03-4093	6442-R9-C	3																	
				26-03-4054	6442-R5-D	4																	
				26-03-4052	6442-R5-B	2																	
				26-03-4103	6442-R10-C	3																	
				26-03-4042	6442-R4-B	2																	
				26-03-4106	6442-R10-F	6																	
					6442-R12-F	6																	
				26-03-4112	6442-R11-B	2																	
					6442-R13-B	2																	
				26-03-4175	6442-R17-E	5																	
				26-03-4102	6442-R10-B	2																	
				26-03-4032	6442-R3-B	2																	
				26-03-4082	6442-R8-B	2																	
					6442-R7-51	1,7																	
					6442-R9-51	1,9																	
				26-03-4099	6442-R9-52	2,9																	
				26-03-4149	6442-R14-M	13																	
					6442-R4-A	1																	
				26-03-4152	6442-R15-N	14																	
					6442-R10-51	1,10																	
				26-03-4083	6442-R-08-C	3																	

UPDATE TITLE EC NO. UCF2009-3148 DRANKUPPER CHYKOSJUSEK APPR-FSM TH 2009/07/13 2009/07/13 2009/08/05	QUALITY SYMBOLS ▽=0 ▽=0	GENERAL TOLERANCES (UNLESS SPECIFIED) mm INCH 4 PLACES # --- # --- 3 PLACES # --- # --- 2 PLACES # --- # --- 1 PLACE # --- # --- ANGULAR ±1/2°	DIMENSION STYLE MM/IN DRAWN BY POLGAR DATE 1986/12/02 CHECKED BY DATE PATEL 1986/12/02 APPROVED BY DATE LENZ 1986/12/02	SCALE --- DESIGN UNITS INCH THIRD ANGLE PROJECTION	TITLE KK (3.96)/156 TRIFURCON CRIMP TERMINAL HOUSING 6442 SERIES	MATERIAL NO. SEE CHART DOCUMENT NO. SD-6442	SHEET NO. 3 OF 4
	THIS DRAWING CONTAINS INFORMATION THAT IS PROPRIETARY TO MOLEX INCORPORATED AND SHOULD NOT BE USED WITHOUT WRITTEN PERMISSION						
	MOLEX INCORPORATED						