

PLEASE CHECK WWW.MOLEX.COM FOR LATEST PART INFORMATION

Part Number: **0039000280**
Status: **Active**
Overview: [standard_062](#)
Description: 1.57mm (.062") Diameter, Standard .062" Pin and Socket Crimp Terminal, Series 1854, 3.68mm (.145") Pitch, Male, Tin (Sn) Plated Brass Contact, 22-28 AWG, Reel

Documents:

[Drawing \(PDF\)](#) [Product Specification PS-1854-003 \(PDF\)](#)
[Product Specification PS-1854-002 \(PDF\)](#) [RoHS Certificate of Compliance \(PDF\)](#)

General

Product Family	Crimp Terminals
Series	1854
Crimp Quality Equipment	Yes
Overview	standard_062
Product Name	Standard .062"

Physical

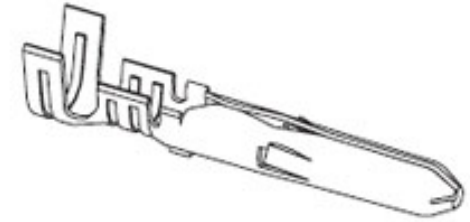
Gender	Male
Material - Metal	Brass
Material - Plating Mating	Tin
Material - Plating Termination	Tin
Packaging Type	Reel
Plating min: Mating (µin)	35
Plating min: Mating (µm)	0.88
Plating min: Termination (µin)	35
Plating min: Termination (µm)	0.88
Termination Interface: Style	Crimp or Compression
Wire Insulation Diameter	1.10-1.50mm (.043-.059")
Wire Size AWG	22, 24, 26, 28
Wire Size mm ²	N/A

Material Info

Old Part Number 1854T

Reference - Drawing Numbers

Packaging Specification	SPK-1854-001
Product Specification	PS-1854-002, PS-1854-003
Sales Drawing	SD-1854*



Series

image - Reference only

EU RoHS

**ELV and RoHS
Compliant**

REACH SVHC

Contains SVHC: No

Halogen-Free

Status

Halogen-Free

China RoHS



**Need more information on product
environmental compliance?**

Email productcompliance@molex.com
 For a multiple part number RoHS Certificate of Compliance, [click here](#)

Please visit the [Contact Us](#) section for any non-product compliance questions.

Search Parts in this Series

[1854Series](#)

Use With

[1625np Plug Housing](#)

Application Tooling | FAQ

Tooling specifications and manuals are found by selecting the products below. Crimp Height Specifications are then contained in the Application Tooling Specification document.

Global

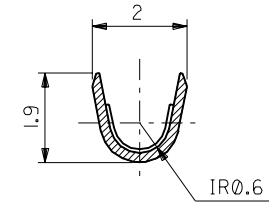
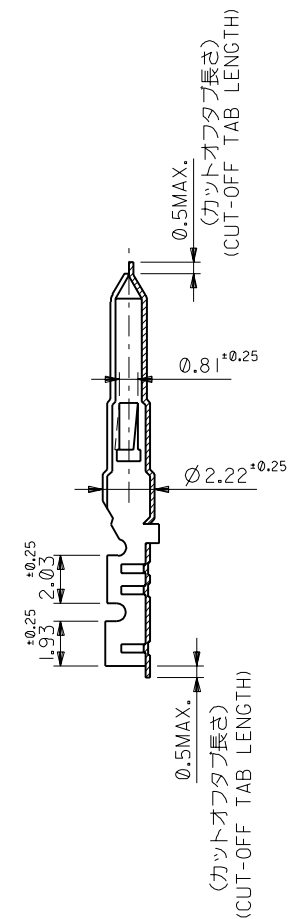
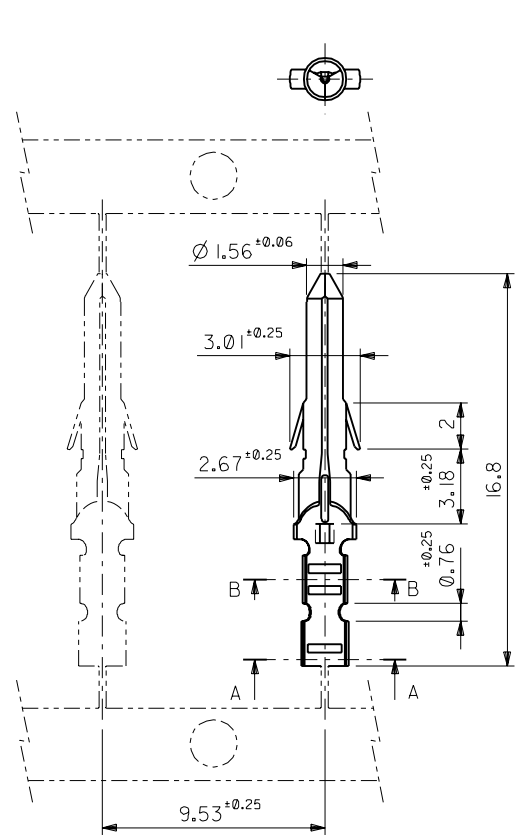
Description	Product #
Mini-Mac™ Applicator	0638914000
Hand Crimp Tool	0638190800
Manual Extraction Tool	0011030002

Japan

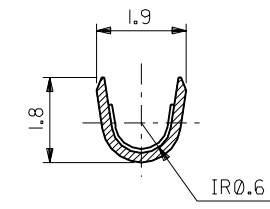
Description	Product #
Hand Insertion Tool	0011020001
Applicator for M211A Bench Press, 18-28	0011260072

This document was generated on 05/19/2010

PLEASE CHECK WWW.MOLEX.COM FOR LATEST PART INFORMATION



SECT. A-A
(SCALE 10 : 1)



SECT. B-B
(SCALE 10 : 1)

注記 NOTES:

- 1. 一般公差 : ± 0.4
GENERAL TOLERANCES : ± 0.4

角度 ANGLE	± 3
30以上 OVER	± 0.3
10以上 OVER 30未満 UNDER	± 0.25
10未満 UNDER	± 0.2
一般公差 GENERAL TOLERANCES	

記号 LTR	変更内容 REVISION RECORD	DR. DATE	CHK. DATE
K	REDRAWN (J30695) 再作図	H.H.	93/07/09

材料 MATERIAL	黄銅 BRASS 0.2 t
仕上げ FINISH	
適用電線範囲 WIRE RANGE	AWG#22-#28
被覆外径 INS. RANGE	$\phi 1.1 \sim 1.5$
DRAWN BY	93/07/09 H.HASEGAWA
CHK'D BY	93/07/09 H.HIRAMOTO
APP'D BY	93/07/09 M.FUKUSHIMA
尺度 SCALE	5 : 1

ニッケル (2 μm MIN.) 下地 金 (0.35 μm MIN.) GOLD (0.35 μm MIN.) OVER NICKEL (2 μm MIN.)	39-00-0337	1854GL	バラ端子 LOOSE
銅 (0.5 μm MIN.) 下地 錫 (0.9 μm MIN.) TIN (0.9 μm MIN.) OVER COPPER (0.5 μm MIN.)	39-00-0336	1854G	連鎖状端子 CHAIN
	39-00-0335	1854TL	バラ端子 LOOSE
	39-00-0280	1854T	連鎖状端子 CHAIN
メッキ PLATING	EDP.NO.	ENG.NO.	形状 FORM

molex MOLEX-JAPAN CO.,LTD. 日本モレックス株式会社	
REVISE ONLY ON CAD SYSTEM	
TITLE 名称 .062 DIA. CRIMP MALE TERMINAL	
DWG. NO. SD-1854*	REV K