



# TAI-SAW TECHNOLOGY CO., LTD.

No. 3, Industrial 2nd Rd., Ping-Chen Industrial District,  
Taoyuan, 324, Taiwan, R.O.C.

TEL: 886-3-4690038 FAX: 886-3-4697532

E-mail: [tstsales@mail.taisaw.com](mailto:tstsales@mail.taisaw.com) Web: [www.taisaw.com](http://www.taisaw.com)

## Approval Sheet For Product Specification

Issued Date:

Product Name: IF SAW Filter 190 MHz (SMD 3.0mmX3.0mm)

TST Parts No.:TB0529A

Customer Parts No.:\_\_\_\_\_

Company: _____
Division: _____
Approved by : _____
Date: _____

Checked by: \_\_\_\_\_ Andy Lee

Approval by: \_\_\_\_\_ Francis Chen

Date: \_\_\_\_\_ 2007/7/20



# TAI-SAW TECHNOLOGY CO., LTD.

No. 3, Industrial 2nd Rd., Ping-Chen Industrial District,  
Taoyuan, 324, Taiwan, R.O.C.

TEL: 886-3-4690038 FAX: 886-3-4697532

E-mail: [tstsales@mail.taisaw.com](mailto:tstsales@mail.taisaw.com) Web: [www.taisaw.com](http://www.taisaw.com)

## IF SAW Filter 190 MHz SMD 3.0mmX3.0mm

MODEL NO.: TB0529A

Rev. No.1

### A. MAXIMUM RATING:

1. Operating Temperature: -10 °C ~ +80 °C
2. Storage Temperature: -40 °C ~ +85 °C
3. Input Power Level: 10dBm

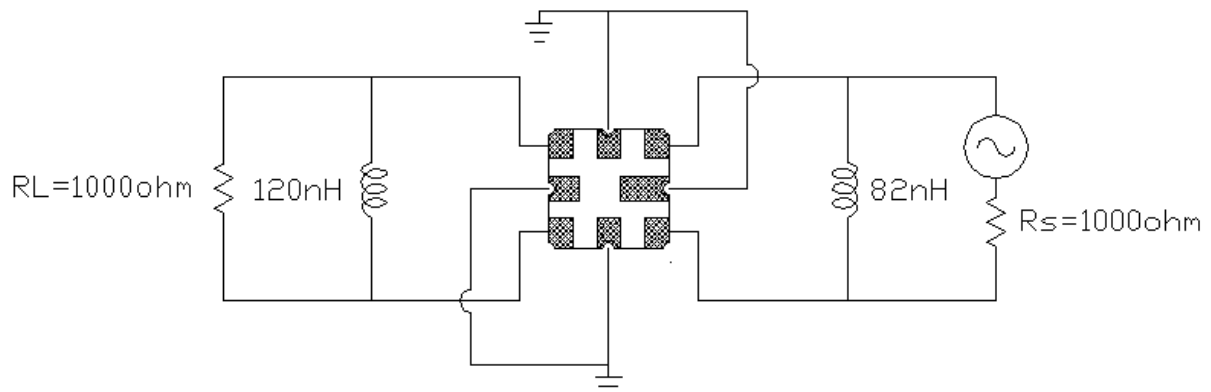
RoHS Compliant  
Lead free  
Lead-free soldering

### B. Characteristics :

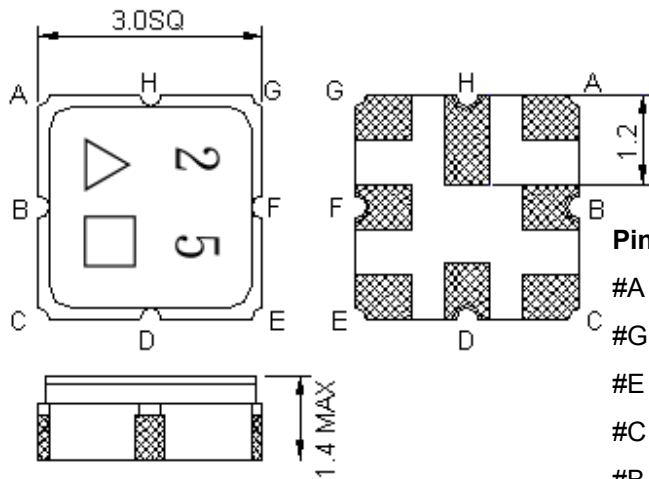
1. Ambient Temperature: 25 °

Characteristics	Value			Note.
	Min.		Max.	
Center frequency $F_c$ MHz	-	190	-	-
Maximum Insertion loss I.L. dB	-	5.3	7.0	-
3dB Bandwidth MHz	4.60	6.80	-	-
Passband Ripple ( $F_c \pm 2\text{MHz}$ ) MHz	-	0.60	2.00	-
Group Delay Ripple ( $F_c \pm 2\text{MHz}$ ) nS	-	30	100	-
Attenuation:( Reference level from Max.IL)				
From $F_c \pm 5\text{MHz}$ to $F_c \pm 7.5\text{MHz}$ dB	10	15	-	-
From $F_c \pm 7.5\text{MHz}$ to $F_c \pm 12.5\text{MHz}$ dB	25	35	-	-
From $F_c \pm 12.5\text{MHz}$ to $F_c \pm 100\text{MHz}$ dB	36	40	-	-
Temp Coefficient ppm/° C	-	-18	-	-

### C. TEST FIXTURE :



### D.OUTLINE DRAWING:



#### Pin configuration

#A RF Balanced input

#G RF Balanced Input ground

#E RF Balanced Output

#C RF Balanced Output ground

#B,D,E,F,H To be ground

Unit : mm

△ : Year Code (2007→7, ..., 2009→9)

□ : Date Code (Follow the table from planner each year)

### E. Frequency Characteristics :

#### 1. S21 Response

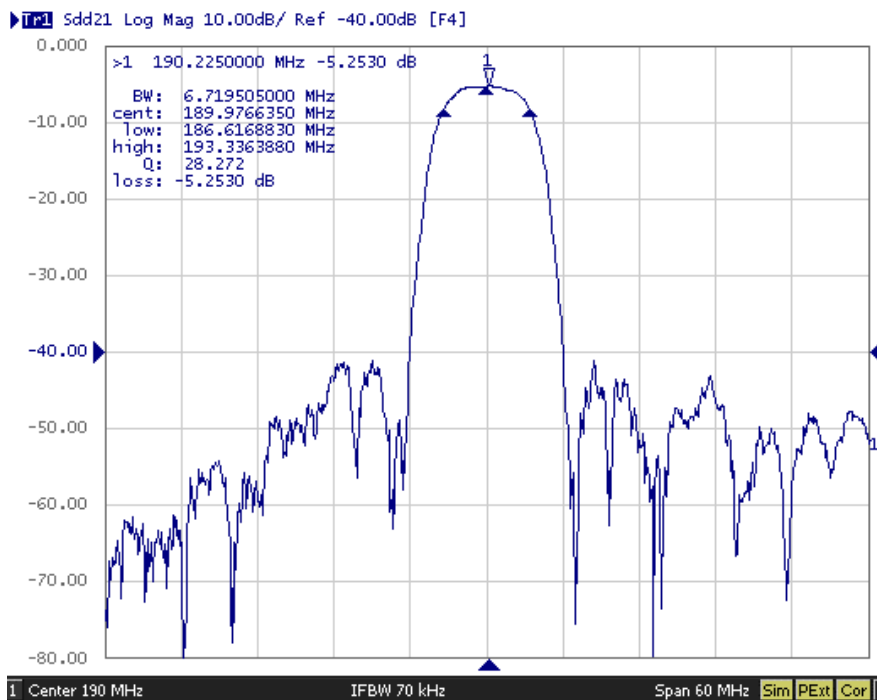


Fig1. Horizontal: 6MHz/Div Vertical: 10dB/Div

## 2. Pass band Ripple and Group Delay Ripple

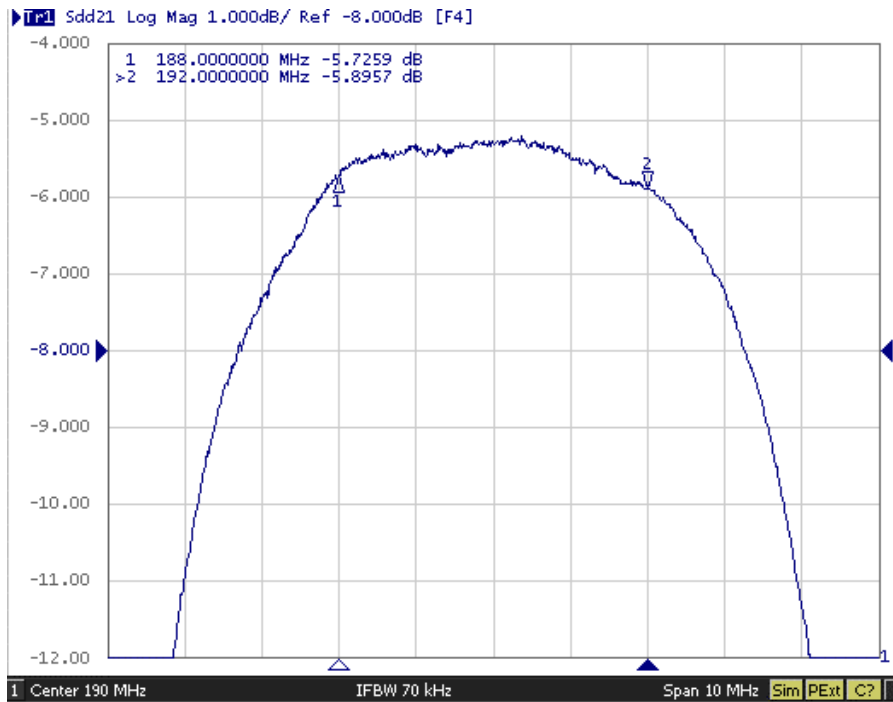


Fig2. Horizontal: 1MHz/Div; Vertical: 1dB/Div,

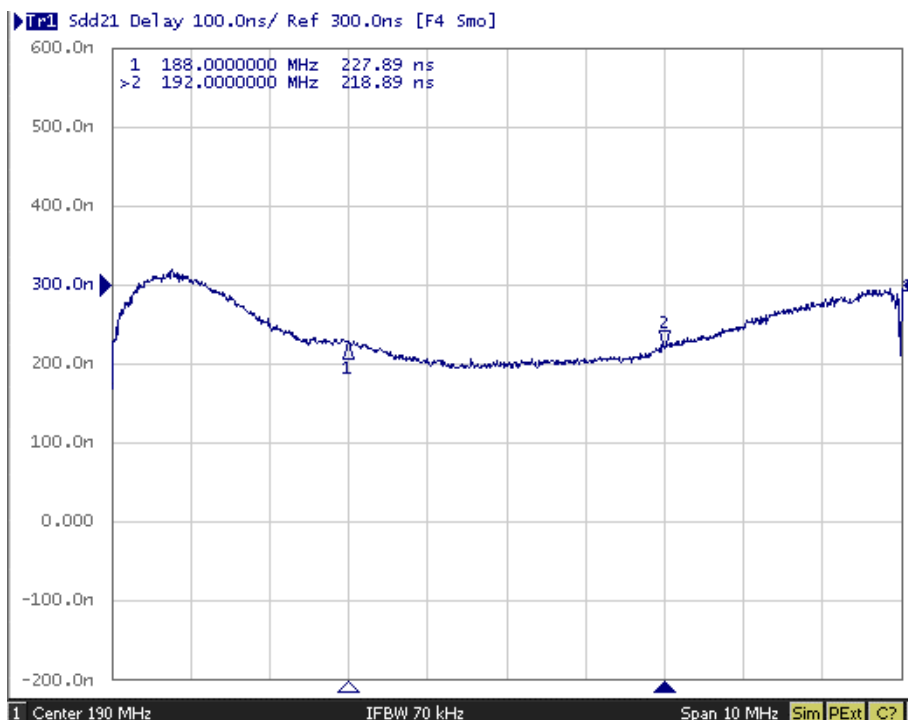
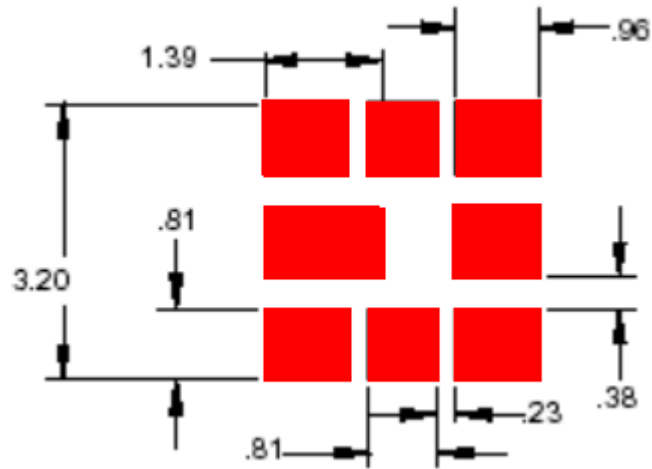


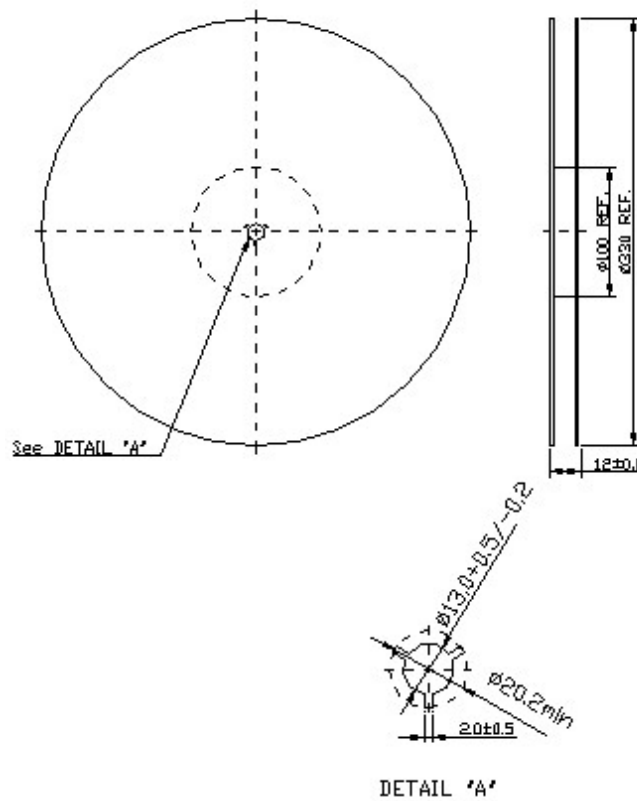
Fig3. Horizontal: 1MHz/Div; Vertical: 100nS/Div,

## F. PCB FOOTPRINT



## G. PACKING:

### 1. REEL DIMENSION



2. TAPE DIMENSION

