



TAI-SAW TECHNOLOGY CO., LTD.

No. 3, Industrial 2nd Rd., Ping-Chen Industrial District,
Taoyuan, 324, Taiwan, R.O.C.

TEL: 886-3-4690038 FAX: 886-3-4697532

E-mail: tstsales@mail.taisaw.com Web: www.taisaw.com

Approval Sheet For Product Specification

Issued Date: 08/24/05

Product Name: SAW Filter 644.5 MHz SMD 3.0x3.0 mm

TST Parts No.:TB0300A

Customer Parts No.: _____

Company: _____
Division: _____
Approved by : _____
Date: _____

Checked by: _____ Asin Lin

Approval by: _____ Francis Chen

Date: _____ 08/24/05



TAI-SAW TECHNOLOGY CO., LTD.

No. 3, Industrial 2nd Rd., Ping-Chen Industrial District,
Taoyuan, 324, Taiwan, R.O.C.

TEL: 886-3-4690038 FAX: 886-3-4697532

E-mail: tstsales@mail.taisaw.com Web: www.taisaw.com

SAW Filter 644.5MHz

MODEL NO.: TB0300A

REV. NO.:1

A. MAXIMUM RATING:

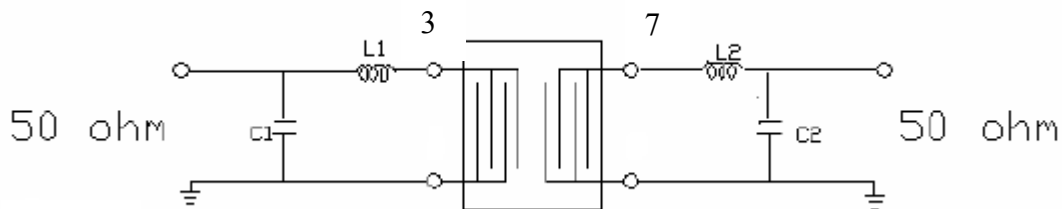
1. Input Power Level : 0 dBm
2. Operating Temperature: -40°C to 85°C
3. Storage Temperature: -40°C to 85°C

RoHS Compliant
Lead free
Lead-free soldering

B. ELECTRICAL CHARACTERISTICS:

Item	Unit	Min.	Type.	Max.	Note
Center frequency, F_c	MHz	-	644.5	-	-
Insertion Loss, IL	dB	-	8	10	-
Passband width, BW₃	MHz	4.5	7.8	-	-
Amplitude Ripple in F _c ±1MHz	dB	-	0.8	1	-
Group delay ripple in F _c ±1MHz	nS	-	70	100	-
Phase Linearity in F _c ±1MHz	deg		2	4	
Attenuation:(Reference level from Min IL)					
10 MHz to 604.5 MHz	dB	35	42	-	-
604.5 MHz to 629.5 MHz	dB	30	38	-	-
659.5 MHz to 684.5 MHz	dB	30	35	-	-
684.5 MHz to 900 MHz	dB	35	42	-	-

C. MEASUREMENT CIRCUIT:



Input L1=5.6nH, C1=6pF
Output L2=6.8nH, C2=7pF

D. Frequency Characteristics :

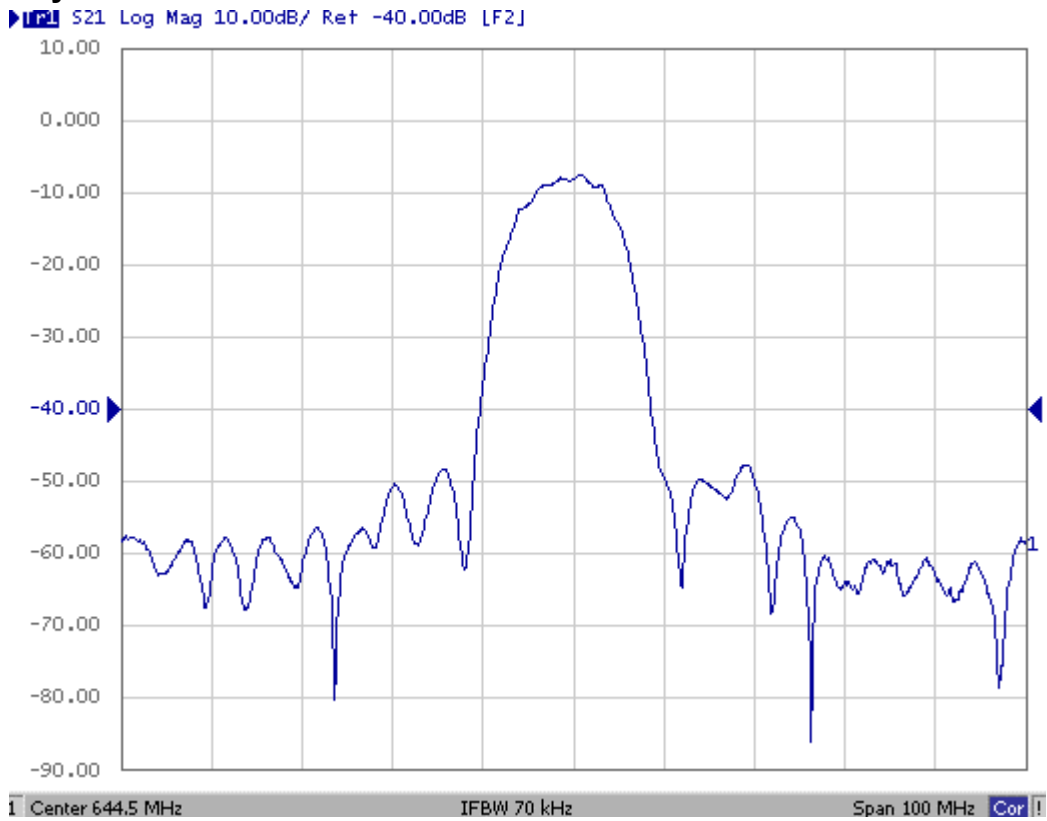


Fig-1 S21 Response Horizontal: 10MHz/Div
Vertical: 10dB/Div

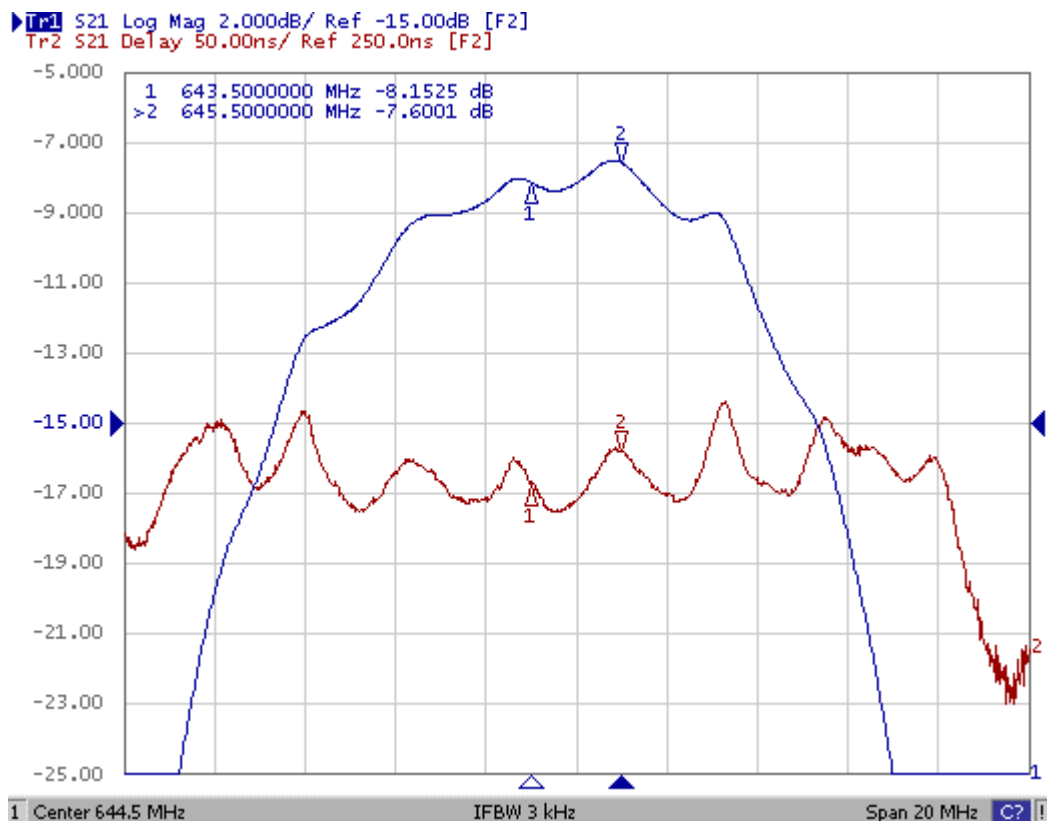
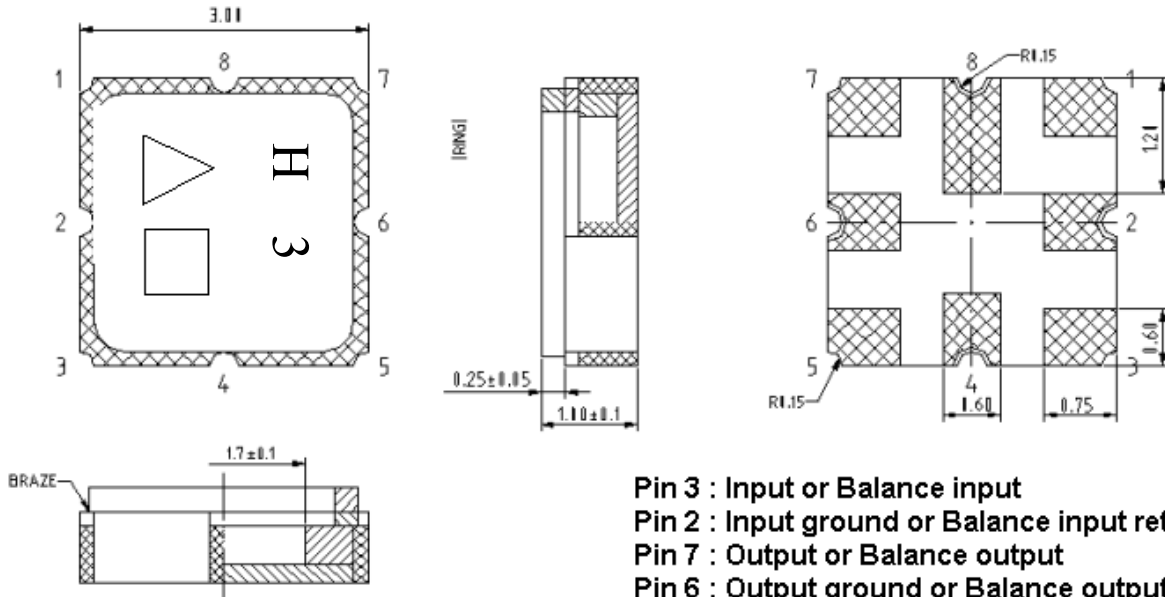


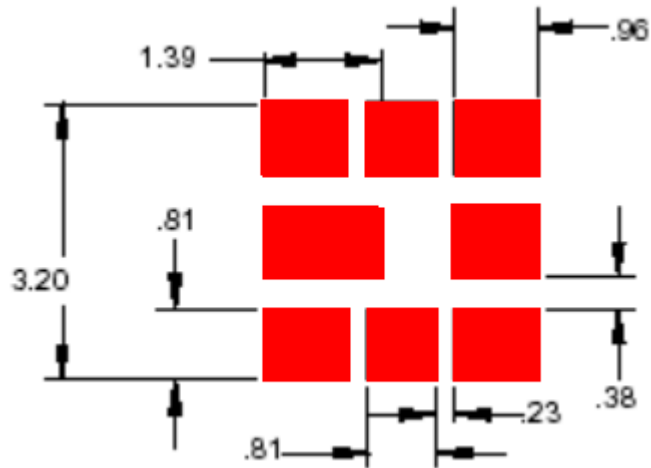
Fig-2 Horizontal: 2M Hz/Div Vertical: 2dB/Div
Vertical: 50ns/Div

E. Outline Drawing :



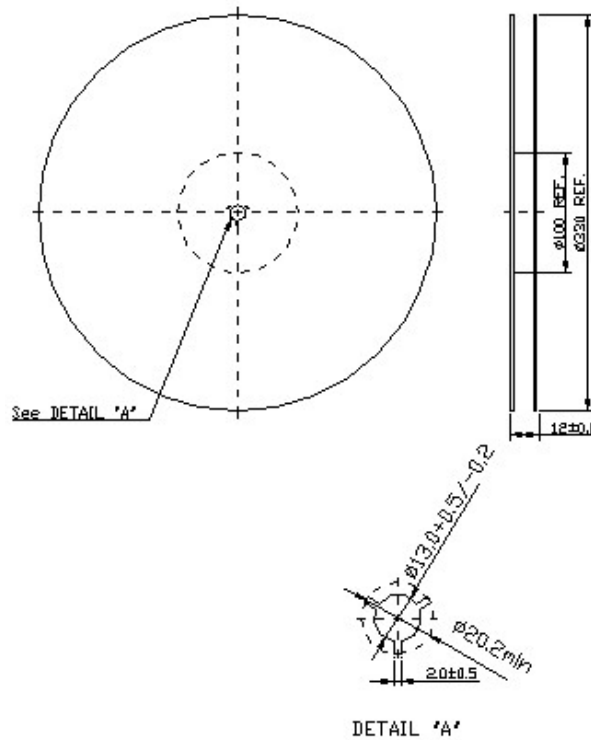
- Pin 3 : Input or Balance input
- Pin 2 : Input ground or Balance input return
- Pin 7 : Output or Balance output
- Pin 6 : Output ground or Balance output return
- Pin 1,4,5,8 : To be ground
- △ : Year code
- : Date code
- Unit : mm

F. PCB Footprint



G. Packing:

1. REEL DIMENSION



2. TAPE DIMENSION

