

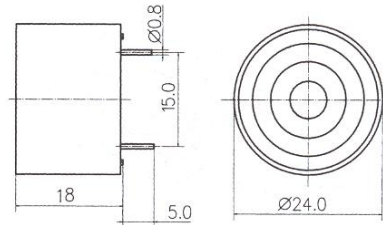


Product Data Sheet

Part No. PB-2418 Non-Washable Type

DIMENSIONS

PB-2418



∅ 24.0 × H18.0

PB-2418-1: Non Epoxy Potting Material
PB-2418-2: Epoxy Potting Material

| Type | Unit | PB-2418-1 |
|----------------------------------|-------|-----------|
| Rated Voltage | (VDC) | 12 |
| Operating Voltage | (VDC) | 3~20 |
| Current Consumption | (mA) | < or =8 |
| Sound Output (Min) | (dB) | > or = 90 |
| Resonant Frequency | (Hz) | 3700±500 |
| Operating Temp | (C) | -20~+60 |
| Storage Temp | (C) | -30~+70 |
| Weight | (g) | 5 |
| Dimension | mm | 24 x H18 |
| *Value applying at rated voltage | | |
| *distance for measurement 30cm | | |

| Type | Unit | PB-2418-2 |
|----------------------------------|-------|-----------|
| Rated Voltage | (VDC) | 12 |
| Operating Voltage | (VDC) | 3~20 |
| Current Consumption | (mA) | < or =8 |
| Sound Output (Min) | (dB) | > or = 90 |
| Resonant Frequency | (Hz) | 3700±500 |
| Operating Temp | (C) | -20~+60 |
| Storage Temp | (C) | -30~+70 |
| Weight | (g) | 5 |
| Dimension | mm | 24 x H18 |
| *Value applying at rated voltage | | |
| *distance for measurement 30cm | | |