



TAI-SAW TECHNOLOGY CO., LTD.

No. 3, Industrial 2nd Rd., Ping-Chen Industrial District,
Taoyuan, 324, Taiwan, R.O.C.

TEL: 886-3-4690038 FAX: 886-3-4697532

E-mail: tstsales@mail.taisaw.com Web: www.taisaw.com

Approval Sheet For Product Specification

Issued Date:

Product Name: SAW Filter 427.5MHz SMD5.0x5.0mm

TST Parts No.:TB0657A

Customer Parts No.:_____

Company: _____
Division: _____
Approved by : _____
Date: _____

Checked by: _____ Andy Yu

Approval by: _____ Francis Chen

Date: _____ 2008/5/30



TAI-SAW TECHNOLOGY CO., LTD.

No. 3, Industrial 2nd Rd., Ping-Chen Industrial District,
Taoyuan, 324, Taiwan, R.O.C.

TEL: 886-3-4690038 FAX: 886-3-4697532

E-mail: tstsales@mail.taisaw.com Web: www.taisaw.com

SAW Filter 427.5MHz SMD 5.0mm X 5.0mm

MODEL NO.: TB0657A

REV. NO. 1.0

A. MAXIMUM RATING:

1. Operating Temperature: -25°C to +70°C
2. Storage Temperature: -40°C to +85°C

RoHS Compliant
Lead free
Lead-free soldering

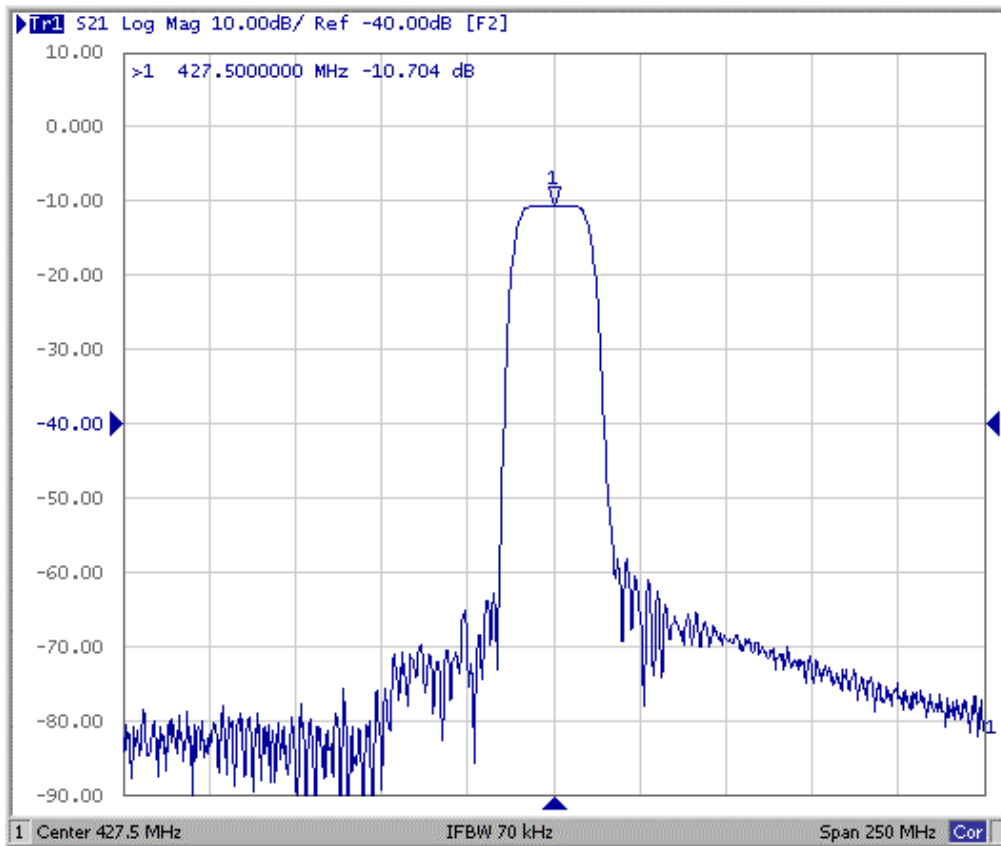
B. ELECTRICAL CHARACTERISTICS:

1. Ambient Temperature: 25 °

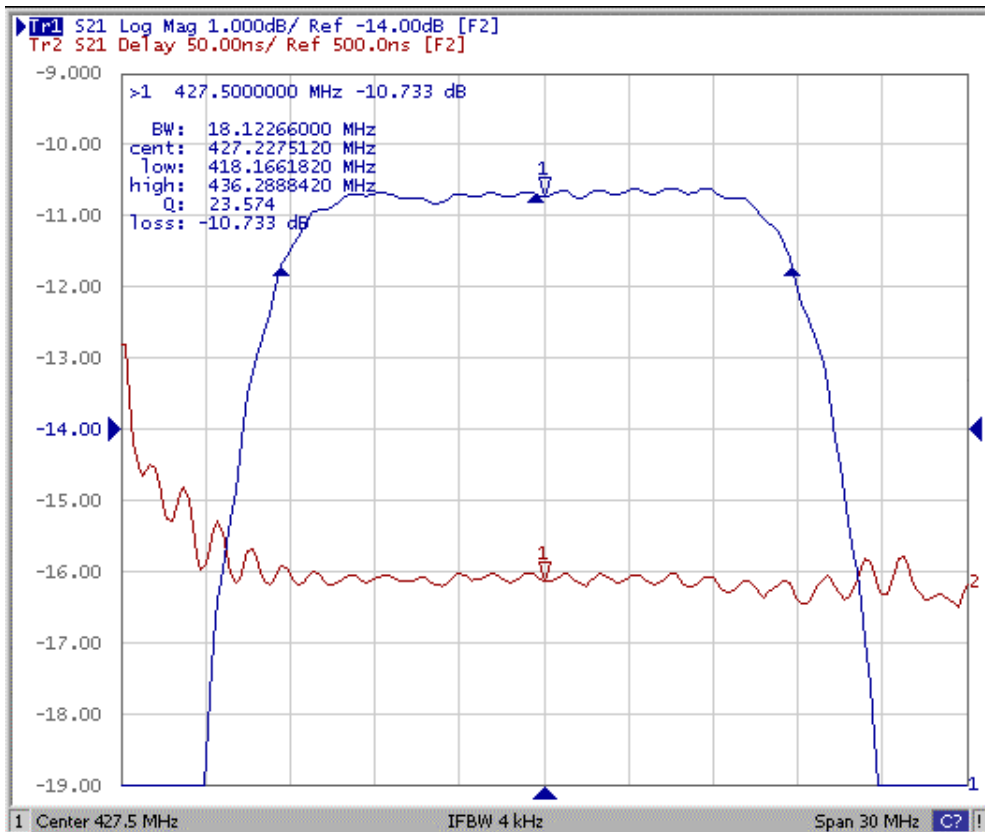
Characteristics	Value			Note
	Min.	Typ.	Max.	
Center frequency F_c MHz	-	427.5	-	-
Minimum Insertion loss I.L. dB	-	10.5	13.0	-
1 dB Bandwidth MHz	15.0	18.2	-	-
3 dB Bandwidth MHz	18.0	20.7	-	-
Ripple (420.0~435.0MHz) dB	-	0.2	1	-
Group-delay Ripple (420.0~435.0MHz) nsec	-	12	100	-
Attenuation (Reference level from Minimum insertion loss)				
(1) 255.0~390.0MHz dB	35	62	-	-
(2) 465.0~600.0MHz dB	40	57	-	-

C. FREQUENCY CHARACTERISTICS :

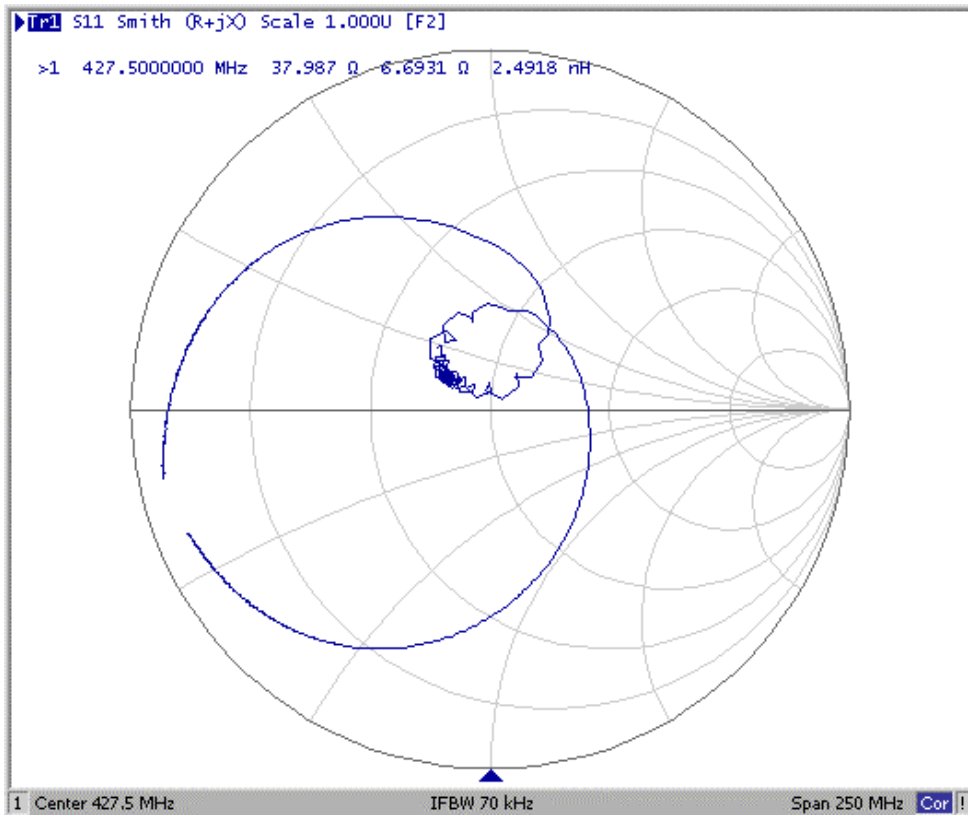
S21 Response: (span250MHz)



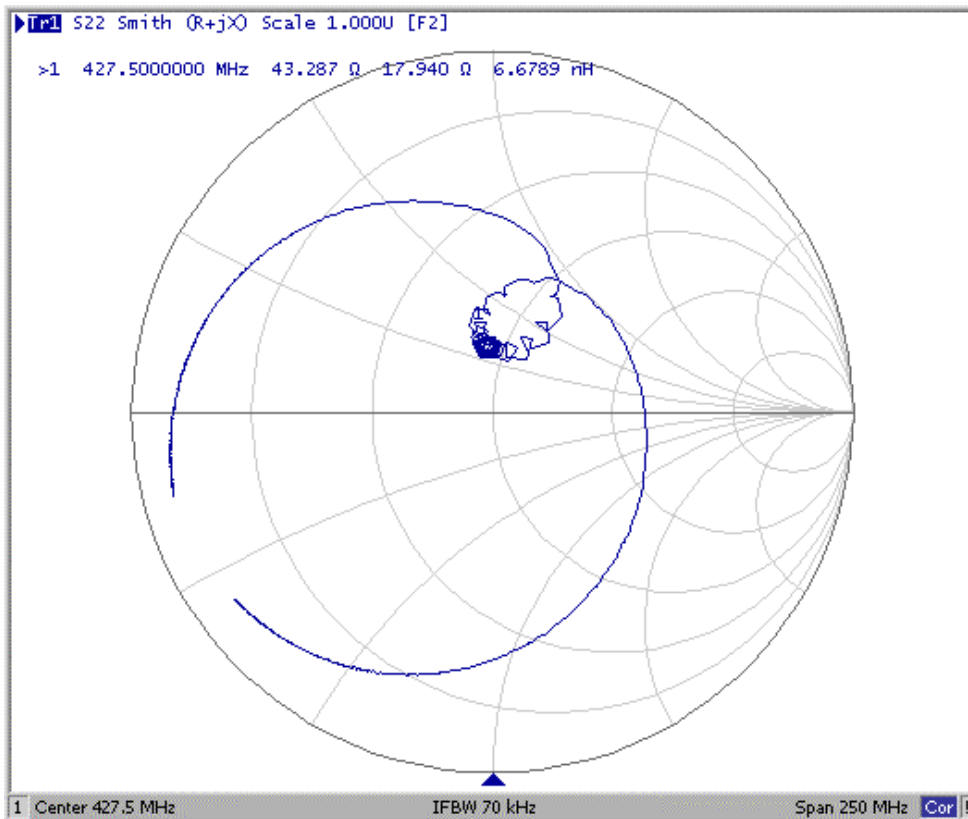
Passband Ripple & Group Delay Ripple: (span30MHz)



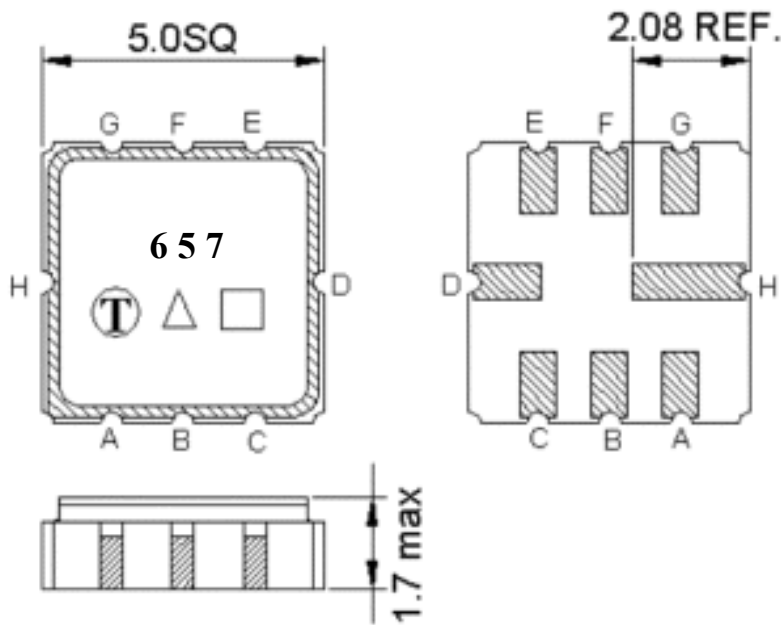
S11 Smith Chart:



S22 Smith Chart:



D.OUTLINE DRAWING:



Pin C: RF input

Pin G: RF output

Pin H,D: Case Ground

Pin A, B, E, F: Ground

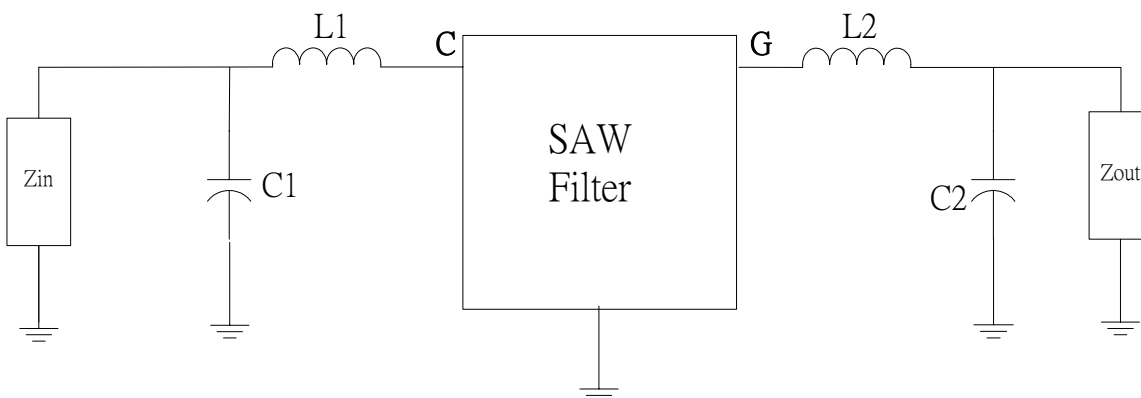
□ : Week Code (Follow the table from planner each year)

Unit : mm

△ : Product / Year Code

Year	2005 2009	2006 2010	2007 2011	2008 2012
Product Code	B	b	<u>B</u>	<u>b</u>

E. Matching Circuit :

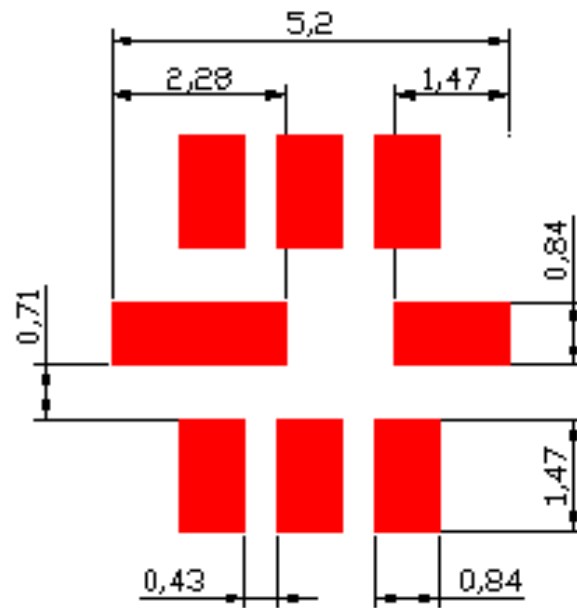


$$Z_{in}=Z_{out}=50\text{ohm}$$

$$L1=18\text{nH}, C1=12\text{pF}, L2=15\text{nH}, C2=15\text{pF}$$

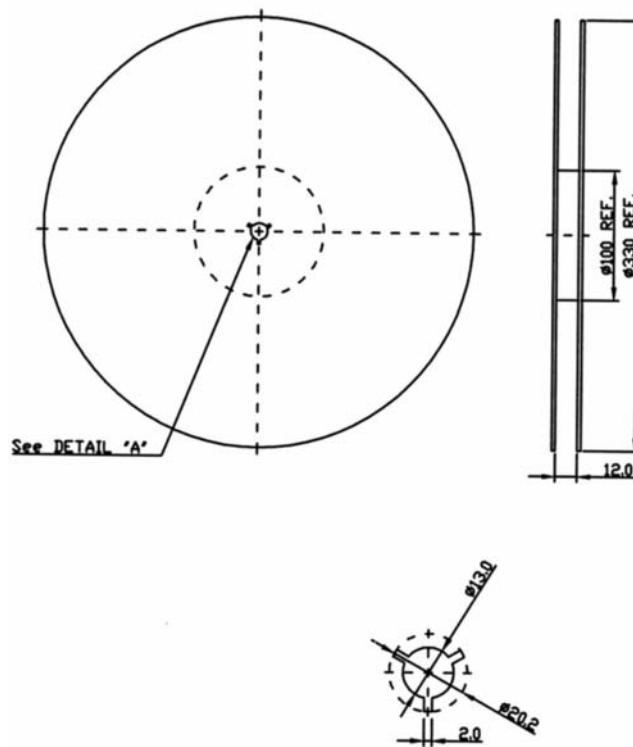
TAI-SAW TECHNOLOGY CO., LTD.

F. PCB Footprint :

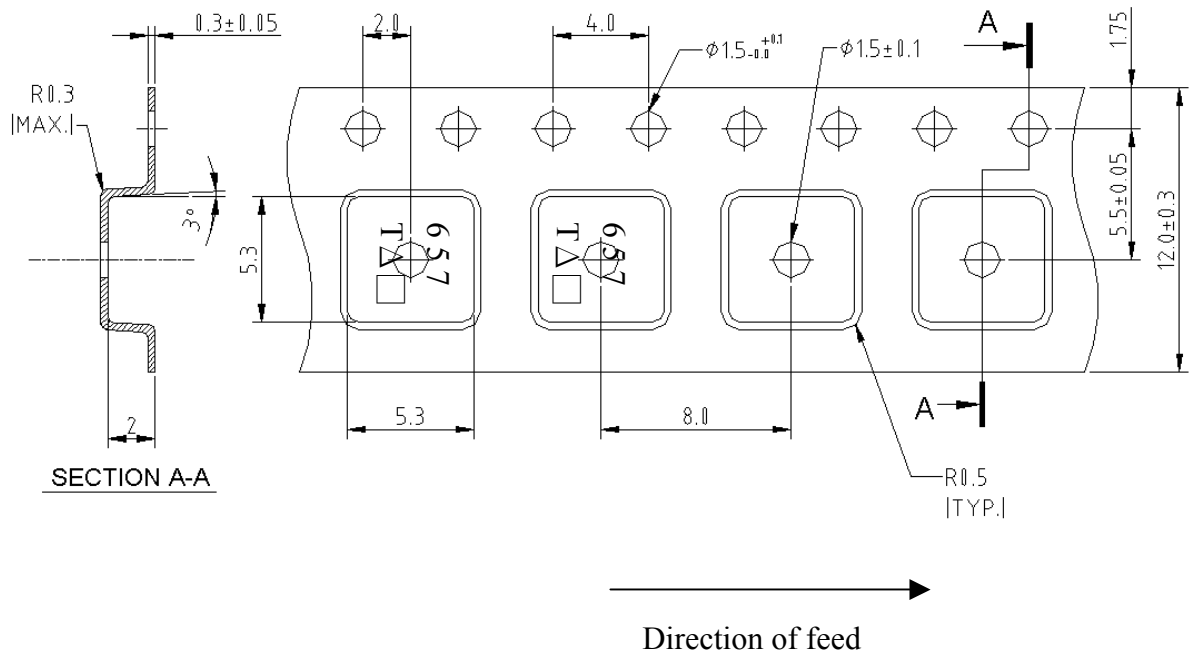


G.PACKING:

1. REEL DIMENSION



2.TAPE DIMENSION



H. Recommended Reflow Profile:

