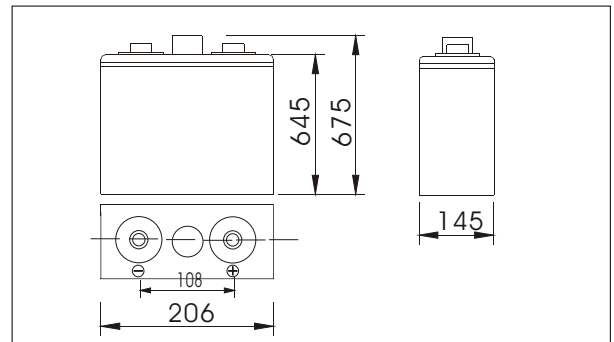




SW26000(2V600AH)



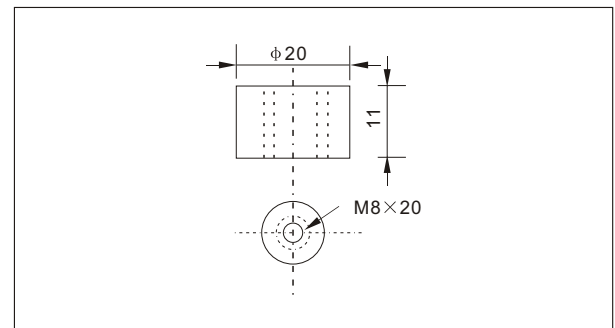
Outer dimensions (mm)



Specifications

Nominal Voltage	2 V	
Rated capacity (10 hour rate)	600 Ah	
Dimensions	Total Height	675 mm (26.57 inches)
	Height	645 mm (25.39 inches)
	Length	206 mm (8.11 inches)
	Width	145 mm (5.71 inches)
Weight Approx	36Kg (79.56lbs)	

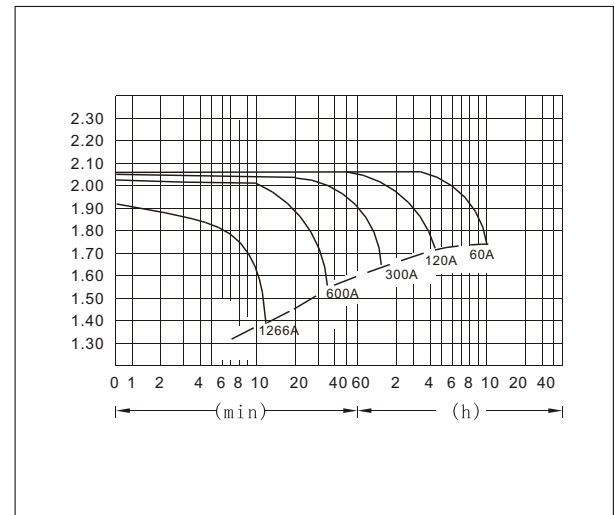
Terminal Type (mm)



Characteristics

Capacity 25°C(77°F)	10 hour rate(60 A) 5 hour rate(96 A) 1 hour rate(360 A)	600 AH 480 AH 360 AH
Internal Resistance	Full charged Battery at 25°C(77°F)	Approx 0.40 mΩ
Capacity affected by Temperature (10hour rate)	40°C(104°F) 25°C(77°F) 0°C(32°F) -15°C(5°F)	102% 100% 85% 65%
Self-Discharge at 25°C(77°F)	Capacity after 3 month storage Capacity after 6 month storage Capacity after 12 month storage	91% 82% 64%
Terminal	T37	
Charge (constant Voltage)	Cycle	Initial Charging Current less than 240 A Voltage 2.35-2.40V
	Float	Voltage 2.25-2.30V

Discharge Curves 25°C(77°F)



Constant Current(Amp) and Constant Power(Watt) Discharge Table at 25°C(77°F)

Time		5min	10min	15min	30min	1h	2h	3h	4h	5h	8h	10h	20h
1.60V	A	1922	1266	1021	684	360	210	154	120	99	70	63	34
	W	3305	2253	1824	1226	648	384	286	225	188	134	121	66
1.70V	A	1861	1142	961	654	338	200	150	117	97	68	62	33
	W	3313	2126	1793	1224	638	385	290	227	189	133	121	65
1.75V	A	1801	1022	841	612	328	196	146	115	96	68	61	33
	W	3277	1937	1599	1174	632	378	284	225	188	133	120	65
1.80V	A	1735	963	781	564	317	191	143	113	94	66	60	32
	W	3245	1851	1500	1089	615	372	281	223	184	130	119	64
1.85V	A	1677	902	721	504	306	186	138	110	91	64	57	31
	W	3170	1742	1399	983	600	366	273	219	181	128	115	62