

RoHS Compliant



2.66:1 Transmission Line Transformer
50-870MHz

MABACT0074
V1P

Features

- Surface Mount
- 2.66:1 Impedance
- Excellent amplitude and phase balance
- 260°C Reflow Compatible
- RoHS* Compliant
- RoHS version of MABACT0017
- Available on Tape and Reel. Reel quantity 2000

Description

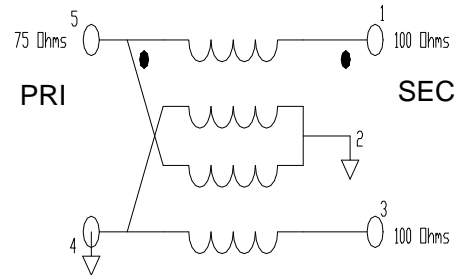
M/A-COM's MABACT0074 is a 4:1 Tx Transformer. This part is characterized in a 2.66:1 impedance environment. This Transformer is provided in a low cost, surface mount package. The windings of the MABACT0074 are welded to the package substrate for improved reliability and reduced lead content. Ideally suited for high volume CATV and Satellite



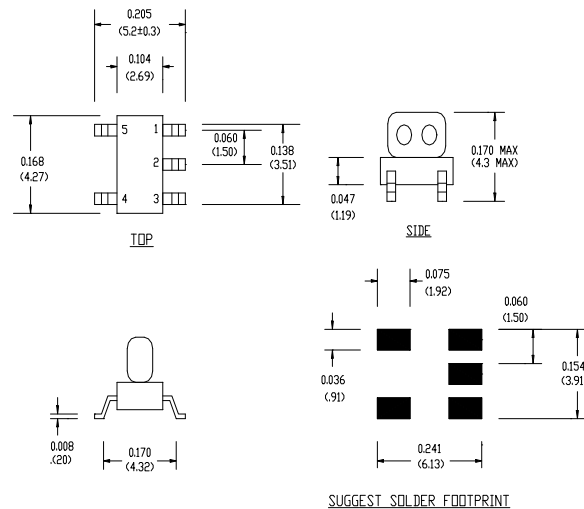
Pin Configuration

Pin No.	Function
1	Output 1: (Secondary dot)
2	Ground, Centre Tap
3	Output 2: (Secondary)
4	Ground (Primary)
5	Input (Primary dot)

Schematic



Case Style: SM-152



Dimensions in inches [mm] Tolerance: .xx ± .02, .xxx ± .010

Ordering Information

Part Number	Package
MABACT0074TR	2000 piece reel
MABA-007970-CT74TB	Customer Test Board

Note: Reference Application Note **M513** for reel size information.

* Restrictions on Hazardous Substances, European Union Directive 2002/95/EC.

1

ADVANCED: Data Sheets contain information regarding a product M/A-COM Technology Solutions is considering for development. Performance is based on target specifications, simulated results, and/or prototype measurements. Commitment to develop is not guaranteed.
PRELIMINARY: Data Sheets contain information regarding a product M/A-COM Technology Solutions has under development. Performance is based on engineering tests. Specifications are typical. Mechanical outline has been fixed. Engineering samples and/or test data may be available. Commitment to produce in volume is not guaranteed.

• North America Tel: 800.366.2266 • Europe Tel: +353.21.244.6400
 • India Tel: +91.80.4155721 • China Tel: +86.21.2407.1588
 Visit www.macomtech.com for additional data sheets and product information.

M/A-COM Technology Solutions Inc. and its affiliates reserve the right to make changes to the product(s) or information contained herein without notice.

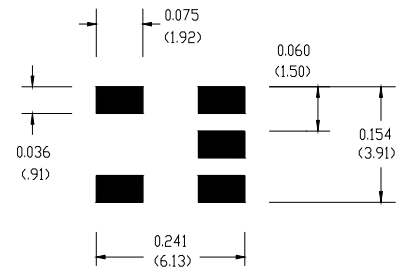
Electrical Specifications: $T_A = 25^\circ\text{C}$, $Z_0 = 75\Omega$

Parameter	Test Conditions	Units	Min	Typ	Max
Insertion Loss (Below the ref Level)	50 - 150 MHz	dB	-	-	2.2
	150 - 650 MHz	dB	-	-	1.5
	650 - 870 MHz	dB	-	-	2.0
Amplitude Unbalance (Nominal 0dB)	50 - 250 MHz	dB	-	± 0.1	± 0.2
	250 - 650 MHz	dB	-	± 0.2	± 0.4
	650 - 870 MHz	dB	-	± 0.3	± 0.6
Phase Unbalance (Nominal 180°)	50 - 150 MHz	°	-	± 2	± 5
	150 - 450 MHz	°	-	± 5	± 10
	450 - 870 MHz	°	-	± 8	± 15
Input Return Loss	50 - 870 MHz	dB	-	10	8

Absolute Maximum Ratings ^{1,2}

Parameter	Absolute Maximum
Max Input Power	1 W
Internal Load Dissipation	0.125 W
Operating Temperature	-40°C to +85°C
Storage Temperature	-40°C to +100°C

Recommended PCB Configuration



SUGGEST SOLDER FOOTPRINT

- Exceeding any one or combination of these limits may cause permanent damage to this device.
- M/A-COM does not recommend sustained operation near these survivability limits.

RoHS Compliant

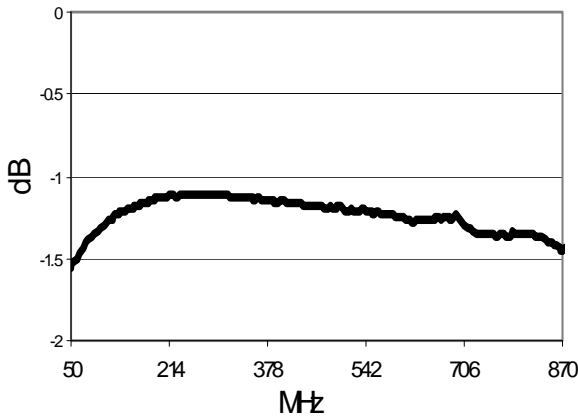


2.66:1 Transmission Line Transformer
50-870MHz

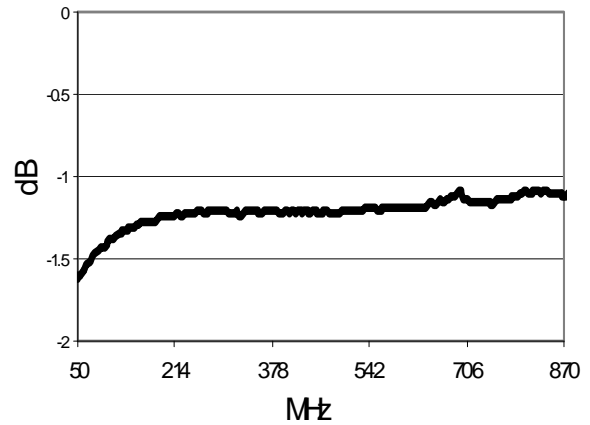
MABACT0074
V1P

Typical Performance Curves: $T_A = 25^\circ\text{C}$, $Z_0 = 75\Omega$

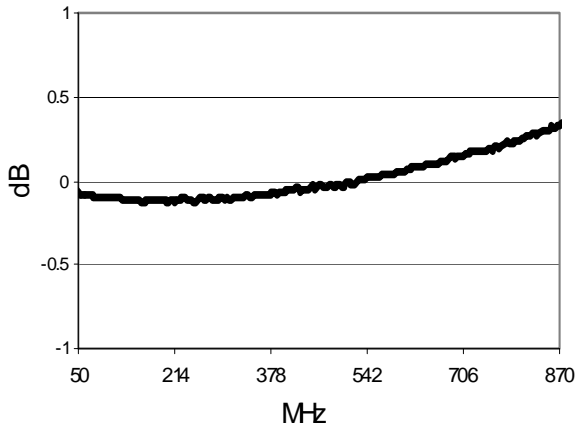
Insertion Loss 1 (Through pin 5 to pin 1)



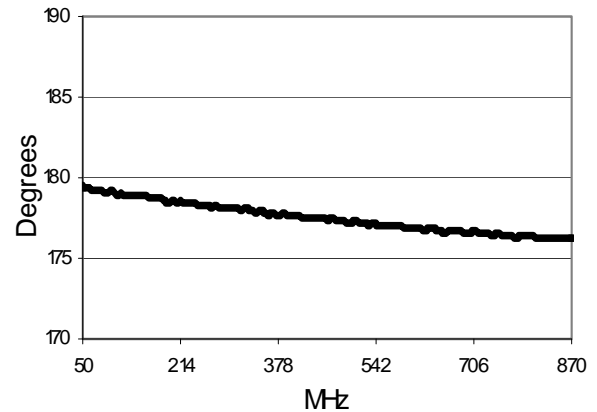
Insertion Loss 2 (Coupled pin 5 to pin 3)



Amplitude Unbalance



Phase Balance



Input Return Loss

