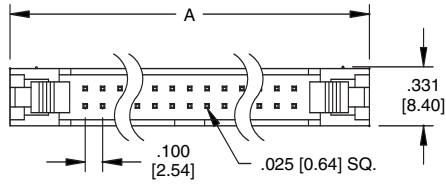
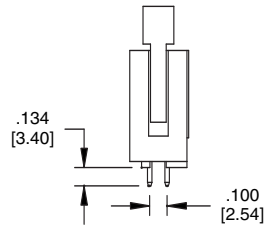
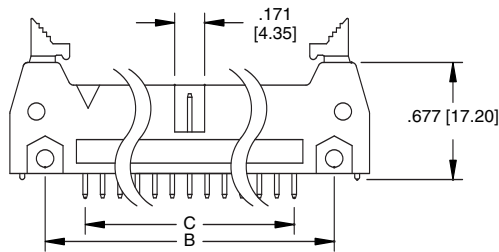


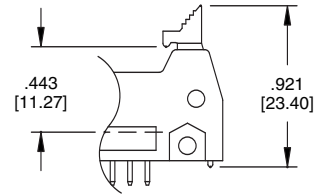
**MHR**  
**STRAIGHT PCB MOUNT**



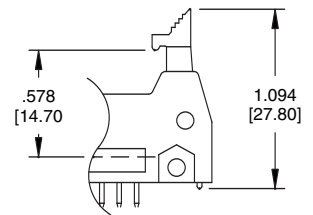
A = .100 [2.54] x No. of Spaces + .860 [21.84]  
 B = .100 [2.54] x No. of Spaces + .460 [11.68]  
 C = .100 [2.54] x No. of Spaces



**Latch Options**

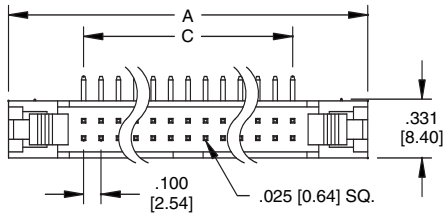


Header with Short Ejector/Latch for Sockets without Strain Reliefs

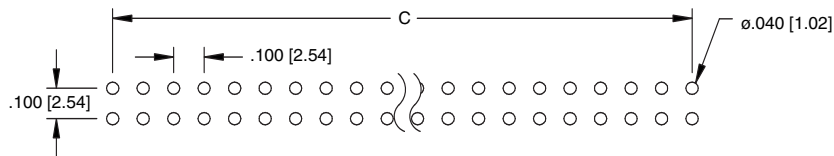
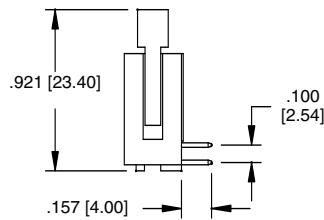
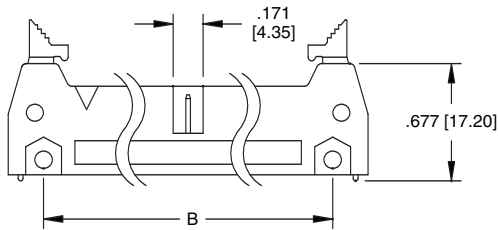


Header with Long Ejector/Latch for Sockets with Strain Reliefs

**MHR**  
**RIGHT ANGLE PCB MOUNT**



A = .100 [2.54] x No. of Spaces + .860 [21.84]  
 B = .100 [2.54] x No. of Spaces + .460 [11.68]  
 C = .100 [2.54] x No. of Spaces



**Recommended PCB Layout**