

MAFR-000226-000001

Circulator

2500 —2700 MHz

Rev: C



Features

- ◆ RoHS Compliant
- ◆ BeO free
- ◆ Designed for WiMax
- ◆ Low Insertion loss

Electrical Specifications¹:

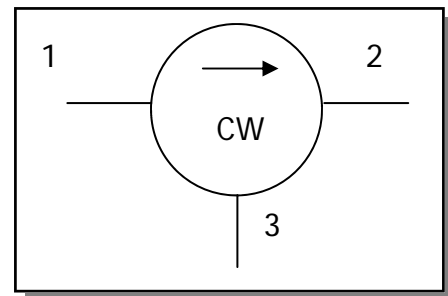
Parameter	Conditions	Units	Min	Typ	Max
Frequency Range		MHz	2500		2700
Impedance		Ω		50	
Insertion Loss		dB			0.25
Isolation		dB	20		
Return Loss	All ports	dB	20		
Intermodulation, 3rd order ²	2 x 30W CW tones, 5 MHz spacing	dBc		-63	-58

1. All specifications guaranteed over the frequency range and operating temperature range unless otherwise stated.
2. See Application Note ANI-001 for further details.

Pin Configuration

Terminal	Designation	Function
1	Port 1	In
2	Port 2	Out
3	Port 3	Out

Functional Block Diagram



Absolute Maximum Ratings

Parameter	Conditions	Units	Min	Max
Average Input Power		W		500
Peak Input Power		W		1000
Operating Temperature Range		°C	-40	+85
Storage Temperature Range		°C	-40	+100

ADVANCED: Data Sheets contain information regarding a product M/A-COM Technology Solutions is considering for development. Performance is based on target specifications, simulated results, and/or prototype measurements. Commitment to develop is not guaranteed.

PRELIMINARY: Data Sheets contain information regarding a product M/A-COM Technology Solutions has under development. Performance is based on engineering tests. Specifications are typical. Mechanical outline has been fixed. Engineering samples and/or test data may be available. Commitment to produce in volume is not guaranteed.

• North America Tel: 800.366.2266 • Europe Tel: +353.21.244.6400
 • India Tel: +91.80.4155721 • China Tel: +86.21.2407.1588

Visit www.macomtech.com for additional data sheets and product information.

M/A-COM Technology Solutions Inc. and its affiliates reserve the right to make changes to the product(s) or information contained herein without notice.

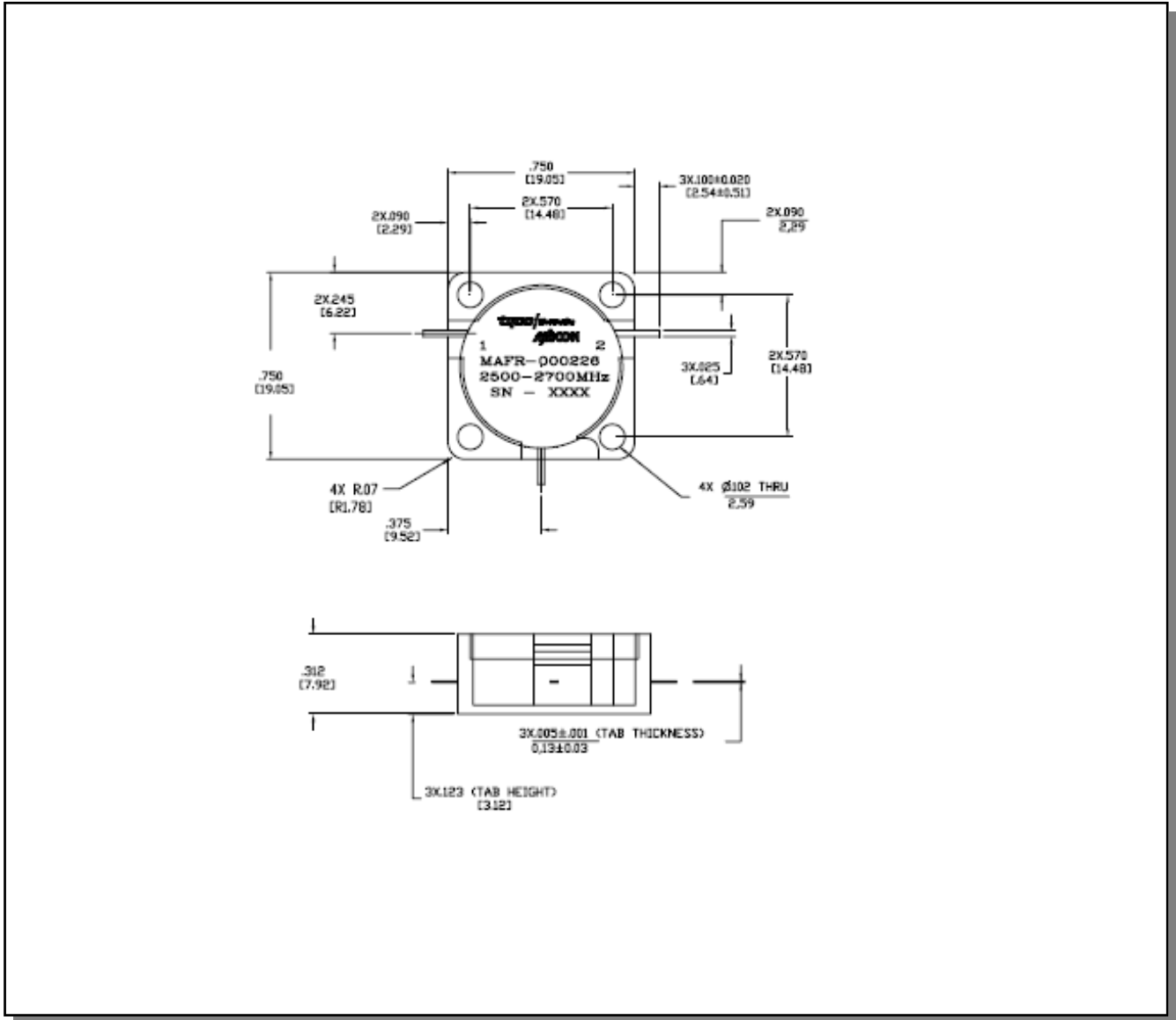
MAFR-000226-000001

Circulator
2500 — 2700 MHz

Rev: C



Outline Drawing



1. Tolerance: ±0.2mm unless otherwise noted.

Plating

Section	Material	Plating
Leads	Copper	Silver
Housing	Steel	Silver

ECO History

Rev	Date	Description	By
-	2/3/07	Release Per 20065792	K Sun
A	27/04/07	Update per 20067294	D Foley
B	24/05/2007	Update per 20067977	K sun
C	03/10/2008	Updated IM spec	BH

ADVANCED: Data Sheets contain information regarding a product M/A-COM Technology Solutions is considering for development. Performance is based on target specifications, simulated results, and/or prototype measurements. Commitment to develop is not guaranteed.
PRELIMINARY: Data Sheets contain information regarding a product M/A-COM Technology Solutions has under development. Performance is based on engineering tests. Specifications are typical. Mechanical outline has been fixed. Engineering samples and/or test data may be available. Commitment to produce in volume is not guaranteed.

• North America Tel: 800.366.2266 • Europe Tel: +353.21.244.6400
 • India Tel: +91.80.4155721 • China Tel: +86.21.2407.1588
 Visit www.macomtech.com for additional data sheets and product information.

M/A-COM Technology Solutions Inc. and its affiliates reserve the right to make changes to the product(s) or information contained herein without notice.