

## Features

- Frequency Range: 10~1000MHz
- Active Bias Design Supply Temperature Compensation
- Standard Hermetic Package
- Operating Temperature Range: -55°C ~ +85°C

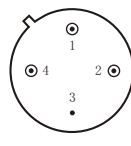
## Specifications (50 Ω, V<sub>CC</sub> = +15V, T<sub>A</sub> = -55°C ~ +85°C)

| Parameter                      | Symbol                         | Unit | Guaranteed | Typical |
|--------------------------------|--------------------------------|------|------------|---------|
| Frequency Range                | f <sub>L</sub> ~f <sub>H</sub> | MHz  | 10~1000    | --      |
| Gain                           | G <sub>p</sub>                 | dB   | ≥18.0      | 19.0    |
| Gain Flatness                  | ΔG <sub>p</sub>                | dB   | ≤±1.0      | ±0.5    |
| Noise Figure                   | F <sub>n</sub>                 | dB   | ≤4.0 Δ     | --      |
| Input VSWR                     | VSWR <sub>i</sub>              | --   | ≤2.0:1     | 1.8:1   |
| Output VSWR                    | VSWR <sub>o</sub>              | --   | ≤2.0:1     | --      |
| Output Power @ 1dB Compression | P-1                            | dBm  | ≥0 * Δ     | 1.0     |
| DC Current                     | I <sub>CC</sub>                | mA   | --         | 38      |

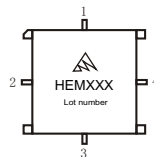
- 1) "\*"f = 200MHz; "Δ" T<sub>A</sub> = 24 ± 1°C;
- 2) The G<sub>p</sub> and P-1 will be reduced 1dB and 2dB respectively under operating at 12VDC (I<sub>CC</sub> = 32mA Typ).

## Maximum Rating

DC Voltage : +17VDC  
RF Input: +10dBm  
Storage Temp: +125°C



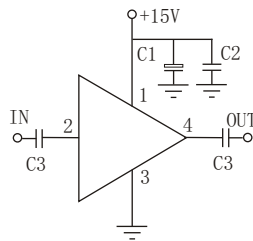
TO-8A



SMO-8C

## Application Notes

1. Typical application shown as right, C<sub>1</sub> = 3.3~22 μF; C<sub>2</sub> = 3300~6800pF; C<sub>3</sub> = 1000pF;
2. Interchanged directly with A-12 from W-J Company;
3. See assembly section for mounting information
4. Connectorized package(SMA-1) available



## Typical Curves

