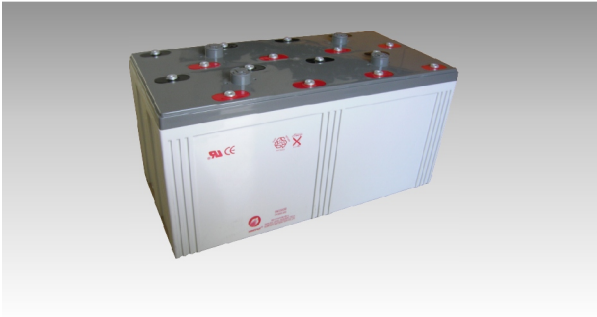
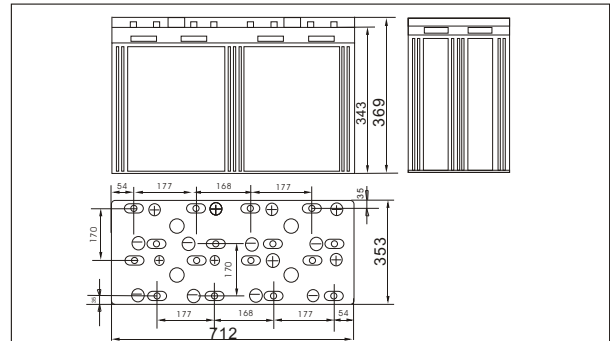




SW230000(2V3000AH)



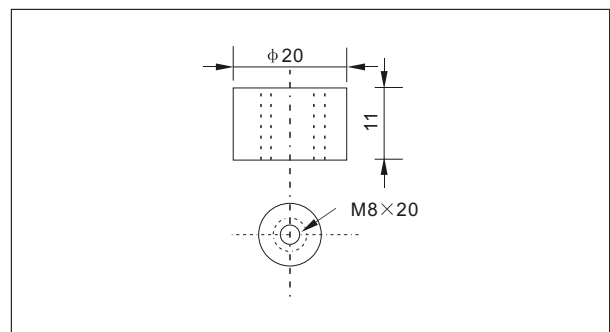
● Outer dimensions (mm)



● Specifications

Nominal Voltage		2 V
Rated capacity (10hour rate)		3000 Ah
Dimensions	Total Height	369 mm (14.5 inches)
	Height	343mm (13.5 inches)
	Length	712 mm (28.0 inches)
	Width	353 mm (13.9 inches)
Weight Approx		191 Kg (422 lbs)

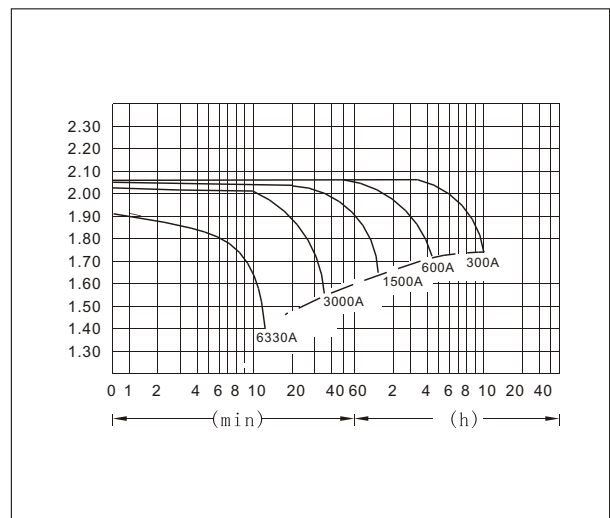
● Terminal Type (mm)



● Characteristics

Capacity 25°C(77°F)	10 hour rate(300 A) 5 hour rate(480 A) 1 hour rate(1800 A)	3000 AH 2400 AH 1800 AH
Internal Resistance	Full charged Battery at 25°C(77°F)	Approx 0.09 mΩ
Capacity affected by Temperature (10hour rate)	40°C(104°F) 25°C(77°F) 0°C(32°F) -15°C(5°F)	102% 100% 85% 65%
Self-Discharge at 25°C(77°F)	Capacity after 3 month storage Capacity after 6 month storage Capacity after 12 month storage	91% 82% 64%
Terminal	T20	
Charge (constant Voltage)	Cycle	Initial Charging Current less than 1200 A Voltage 2.35-2.40V
	Float	Voltage 2.25-2.30V

● Discharge Curves 25°C(77°F)



Constant Current(Amp) and Constant Power(Watt) Discharge Table at 25°C(77°F)

Time		5min	10min	15min	30min	1h	2h	3h	4h	5h	8h	10h	20h
1.60V	A	9609	6330	5103	3420	1800	1050.0	771.0	600.0	495.0	351.0	315.0	170
	W	16527	11267	9119	6129	3240	1922	1430.2	1125.0	938.0	670.4	606.4	330
1.70V	A	9306	5712	4806	3270	1692	1002.0	750.0	585.0	486.0	342.0	309.0	165.0
	W	16565	10630	8963	6118	3189	1925	1447.5	1133.7	944.3	666.9	605.0	322.6
1.75V	A	9003	5109	4203	3060	1638	978.0	732.0	576.0	480.0	339.0	303.0	165.0
	W	16385	9687	7994	5869	3161	1890	1421.5	1123.2	937.9	664.4	597.5	325.1
1.80V	A	8676	4815	3906	2820	1584	954.0	714.0	567.0	468.0	330.0	300.0	162.0
	W	16224	9254	7500	5445	3073	1862	1403.0	1115.9	922.0	651.8	594.3	321.6
1.85V	A	8385	4512	3606	2520	1530	930.0	690.0	552.0	456.0	321.0	285.0	153.0
	W	15848	8708	6996	4914	2999	1832	1366.2	1095.7	907.0	640.7	573.4	309.1