

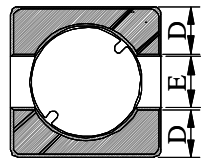
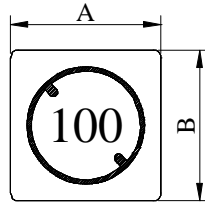
SPECIFICATION FOR APPROVAL

REF : 20080801-A

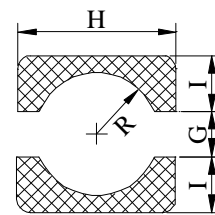
PAGE: 1

PROD. NAME	SHIELDED SMD POWER INDUCTOR	ABC'S DWG NO.	SH4011□□□□L□-□□□
		ABC'S ITEM NO.	

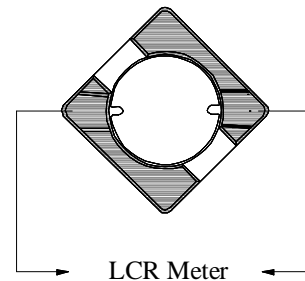
I . CONFIGURATION & DIMENSIONS :



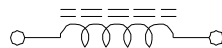
- A : 4.80 ±0.30 m/m
- B : 4.80 ±0.30 m/m
- C : 1.15 ±0.15 m/m
- D : 1.60 typ. m/m
- E : 1.60 typ. m/m
- G : 1.50 ref. m/m
- H : 5.30 ref. m/m
- I : 2.00 ref. m/m
- R : 1.80 ref. m/m



(PCB Pattern Suggestion)

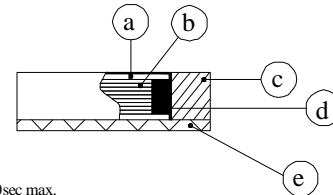


II . SCHEMATIC DIAGRAM :



III . MATERIALS :

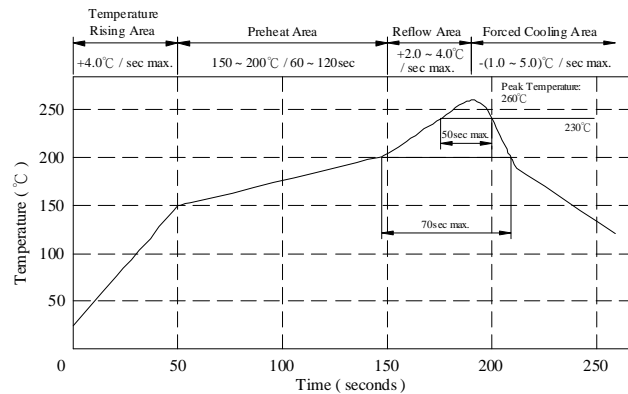
- a . Core : Ferrite DR core
- b . Core : Ferrite RI core
- c . Wire : Enamelled copper wire (Class F & H)
- d . Adhesive : Epoxy resin
- e . Terminal : Ag/Ni/Sn
- f . Remark : Products comply with RoHS' requirements



Peak Temp : 260°C max.
 Max time above 230°C : 50sec max.
 Max time above 200°C : 70sec max.

IV . GENERAL SPECIFICATION :

- a . Temp. rise : 40°C typ.
- b . Storage temp. : -40°C ----+125°C
- c . Operating temp. : -40°C ----+105°C
- d . Resistance to solder heat : 260°C.10 secs.



AR-001A

SPECIFICATION FOR APPROVAL

REF : 20080801-A

PAGE: 2

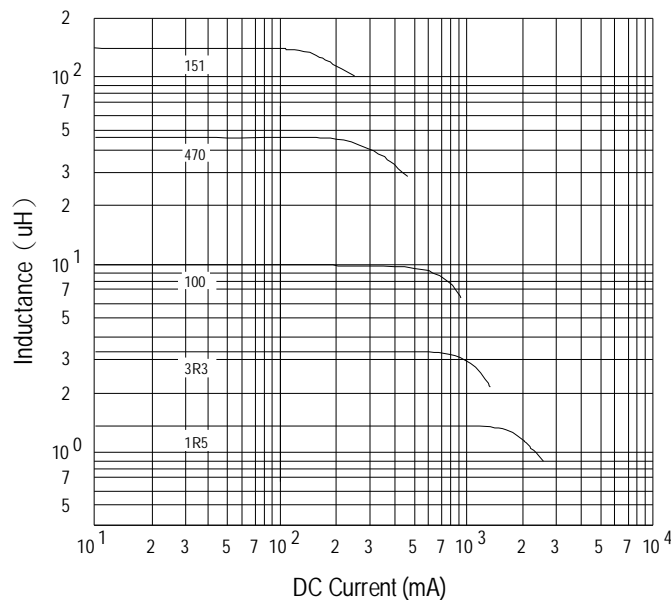
PROD. NAME	SHIELDED SMD POWER INDUCTOR	ABC'S DWG NO.	SH4011□□□□L□-□□□
		ABC'S ITEM NO.	

V . ELECTRICAL CHARACTERISTICS :

DWG No.	Inductance (μH)	Q ref.	Test Freq. (MHz)	SRF (MHz) typ.	RDC (mΩ)		I _{rms} (mA) typ.	I _{sat} (mA) typ.
					typ.	max.		
SH4011R47YL□-□□□	0.47 ± 30 %	7	25.2	221	22	30	3200	3800
SH40111R2YL□-□□□	1.20 ± 30 %	10	7.96	133	35	48	2700	2500
SH40111R5YL□-□□□	1.50 ± 30 %	11	7.96	121	42	56	2300	2100
SH40112R2YL□-□□□	2.20 ± 30 %	11	7.96	92	55	75	2000	1800
SH40113R3YL□-□□□	3.30 ± 30 %	10	7.96	67	82	110	1600	1400
SH40114R7YL□-□□□	4.70 ± 30 %	13	7.96	61	124	165	1350	1200
SH40116R2YL□-□□□	6.20 ± 30 %	7	7.96	51	144	195	1200	1000
SH40118R2YL□-□□□	8.20 ± 30 %	8	7.96	39	162	215	1100	920
SH4011100YL□-□□□	10.00 ± 30 %	14	2.52	41	185	240	1000	830
SH4011150YL□-□□□	15.00 ± 30 %	11	2.52	33	300	400	900	700
SH4011220YL□-□□□	22.00 ± 30 %	13	2.52	23	460	580	600	570
SH4011330YL□-□□□	33.00 ± 30 %	15	2.52	20	680	860	550	470
SH4011470YL□-□□□	47.00 ± 30 %	10	2.52	18	980	1250	480	400
SH4011680YL□-□□□	68.00 ± 30 %	12	2.52	14	1450	1800	350	320
SH4011820YL□-□□□	82.00 ± 30 %	13	2.52	11	1700	2200	330	300
SH4011101YL□-□□□	100.00 ± 30 %	18	0.796	11	1950	2400	310	270
SH4011151YL□-□□□	150.00 ± 30 %	39	0.796	8	3100	3800	250	220

- 1). □ : Packaging Information... [A] : Bulk [B] : Taping Reel
- 2). "- □□□" : Reference code
- 3). Inductance Test Freq. : 100KHz / 0.1V
- 4). I_{rms} base on Temp. rise 40°C typ.
- 5). I_{sat} base on ΔL / LOA=30% typ.

@ Inductance VS. DC Current Curve



AR-001A



SPECIFICATION FOR APPROVAL

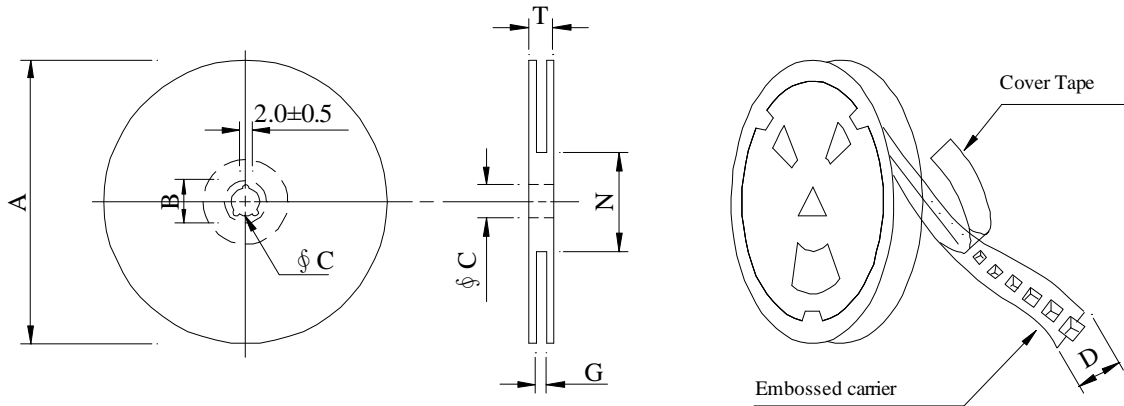
REF : 20080801-A

PAGE: 3

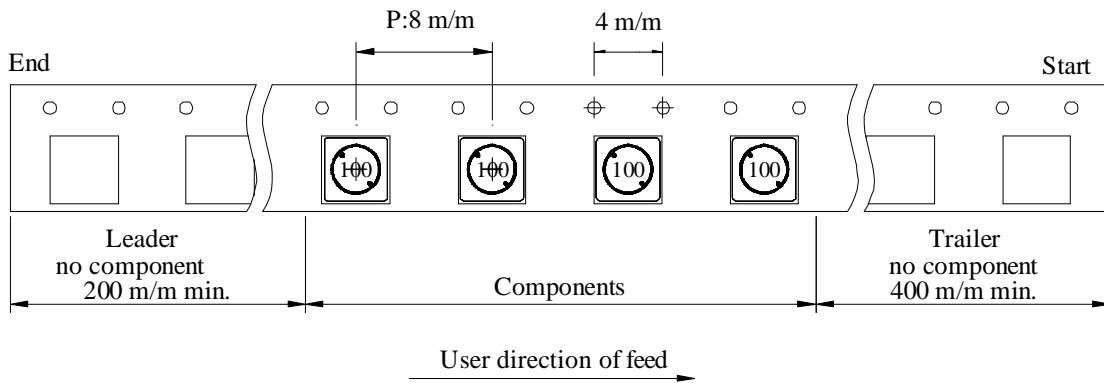
PROD. NAME	SHIELDED SMD POWER INDUCTOR	ABC'S DWG NO.	SH4011□□□□L□-□□□
		ABC'S ITEM NO.	

VI . PACKAGING INFORMATION :

(1) Configuration



※Carrier tape width : D



(2) Dimensions

Unit:m/m

Style	A	B	C	D	G	N	T
07 - 12	178	21±0.8	13	12	14 ⁺⁰	50 ⁻⁰	16.5

(3) Q'TY & G.W. Per package

Series	Inner : Reel			Outer : Carton		
	Q'TY (pcs)	G.W. (gw)	Style	Q'TY (pcs)	G.W. (Kg)	Size (cm)
SH4011	1,200	168	07 - 12	48,000	7.7	42 x 41 x 24

AR-001A

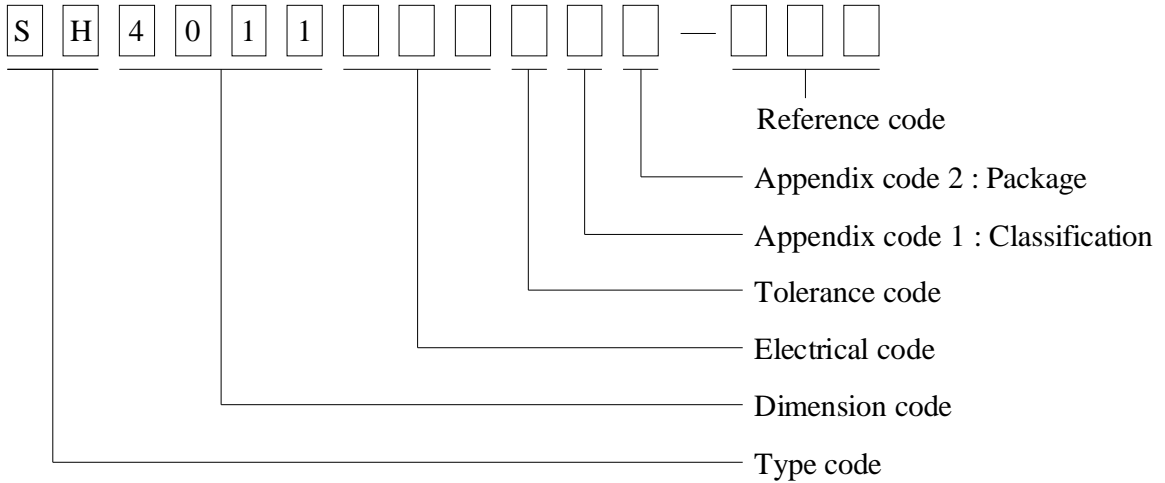
SPECIFICATION FOR APPROVAL

REF : 20080801-A

PAGE: 4

PROD. NAME	SHIELDED SMD POWER INDUCTOR	ABC'S DWG NO.	SH4011□□□□L□-□□□
		ABC'S ITEM NO.	

VII . DWGING NUMBER EXPRESSION :



Appendix code 1 : Product Classification

- L : Lead Free Standard products comply with RoHS' requirements
- 1 ~ 9 : Lead Free Special products comply with RoHS' requirements

Appendix code 2 : Package Information

Code	Inner package	Inner package QTY	Remark
A	T.B.D	T.B.D	
B	T / R (Reel package)	1,200 pcs	

SPECIFICATION FOR APPROVAL

REF : 20080801-A

PAGE: 5

PROD. NAME	SHIELDED SMD POWER INDUCTOR	ABC'S DWG NO.	SH4011□□□□L□-□□□
		ABC'S ITEM NO.	

VIII . RELIABILITY TEST :

Test item	Specification	Test condition						
Solderability	More than 95% of the terminal electrode shall be covered With fresh solder.	Preheat : 155°C / 4 hours. Solder : Sn96.5 / Ag3 / Cu0.5 or equivalent Solder temp. : 235±5°C Flux : Rosin Dip time : 5±0.5 seconds						
Thermal shock test (Temp. cycle)	Electrical oharacteristics shall not change more than ±20%	<table style="width: 100%; border: none;"> <tr> <td style="text-align: center;">Room temp. 15 minutes</td> <td style="text-align: center;">→</td> <td style="text-align: center;">-40 °C 30 minutes</td> </tr> <tr> <td style="text-align: center;">Room temp. 15 minutes</td> <td style="text-align: center;">→</td> <td style="text-align: center;">+105 °C 30 minutes</td> </tr> </table> <p>Total : 50 cycles</p>	Room temp. 15 minutes	→	-40 °C 30 minutes	Room temp. 15 minutes	→	+105 °C 30 minutes
Room temp. 15 minutes		→	-40 °C 30 minutes					
Room temp. 15 minutes		→	+105 °C 30 minutes					
Humidity test		Temperature : 40±2°C Humidity : 90±5% Time : 1000 hours						
High temp. Resistance test	Temperature : 105±5°C Applied current : Per spec. Time : 96 hours							

AR-001A



SPECIFICATION FOR APPROVAL

REF : 20080801-A

PAGE: 6

PROD. NAME	SHIELDED SMD POWER INDUCTOR	ABC'S DWG NO.	SH4011□□□□L□-□□□
		ABC'S ITEM NO.	

IX . UL CARD :

OBMW2 September 8, 2000
Magnet Wire-Component
JUNG SHING WIRE CO LTD E174837
231 CHUNG CHENG RD, SEC 3 JEN-TEH HSIANG, TAINAN
HSIEN TAIWAN

Mtl Dsg	Mark Dsg	BC	Coat Typ	OC	ANSI Type	Temp Class
AIW	---	Polyamideimide		---	MW81-C	220
CFUEWB	---	Polyurethane		---	MW75C	130
EIAIW	---	Polyesterimide		Polyamideimide	MW35C	200
EILOCKY	---	Polyesterimide		Polyamide	---	180
EILOCKW	---	Polyesterimide		Modified Epoxy	---	200
EIW	---	Polyesterimide		---	---	220
EIW-2	---	Polyesterimide		---	MW74-C	200
FL.EILOCKY	---	Modified Polyester		Polyamide	---	155
LSFFW	---	Polyurethane		---	MW79-C	155
LSUEW	---	Polyurethane		---	---	130
PEW	---	Polyester		---	---	155
PEY	---	Polyester		Nylon	MW24-C	155
SF.FLW	---	Modified Polyester		---	MW26C	155
SF.EIW	---	Polyesterimide		---	MW77C	180
SF.BY@	---	Modified Polyester		Nylon	MW27-C	155
SF.FLY@	---	Modified Polyester		Nylon	MW27-C	155
SF.BLOCKBS	---	Modified Polyester		Modified Polyamide	---	155
SF.EILOCKY#	---	Polyesterimide		Polyamide	---	180
SF.EILOCKBS	---	Polyesterimide		Modified Polyamide	---	180
SF.BW@	---	Modified Polyester		---	MW26C	155
SFFW	---	Polyurethane		---	MW79	155

A not-for-profit organization
dedicated to public safety and
committed to quality service

287806002 Page 1 of 2

Mtl Dsg	Mark Dsg	BC	Coat Typ	OC	ANSI Type	Temp Class
SFFY	---	Polyurethane		Polyamide	MW80C	155
UEW-1	---	Polyurethane		---	MW2-C	105
UEW-2	---	Polyurethane		---	---	130
UEW-4	---	Polyurethane		---	MW75C	130
UEY	---	Polyurethane		Nylon	MW28-C	130
UEY-2	---	Polyurethane		Polyamide	MW28-C	130

@ -May be suffixed by LZ; # - May be suffixed by LZ, EL or LZL.
LZ - Signifies magened wires twisted together; EL - signifies base coated magnet wire laid parallel with top coat applied overall; LZL - signi-
fies base coated magnet wire twisted together and covered with top coat overall.
Marking: Company name or trademarks **JSW** or 榮星電線 , material designation or marked designation on packaed or reel, and
Recognized Component Mark.

See General Information Preceding These Recognitions
For use only in equipment where the acceptability of the combination is determined by Underwriters Laboratories Inc.

287806002 Page 2 of 2 OBMW2/E174837
September 8, 2000

AR-001A



SPECIFICATION FOR APPROVAL

REF : 20080801-A

PAGE: 7

PROD. NAME	SHIELDED SMD POWER INDUCTOR	ABC'S DWG NO. ABC'S ITEM NO.	SH4011□□□□L□-□□□
---------------	--------------------------------	---------------------------------	------------------

OBMW2 October 06, 2005
 Magnet Wire-Component

ELEKTRISOLA (MALAYSIA) SDN BHD E143312
 JALAN DAMAI SATU JANDA BAIK 28750 BENTONG, PAHANG
 DARUL MAKMUR MALAYSIA

Mtl Dsg	Mark Dsg	Coating Type		ANSI Typ	Temp Class
		BC	OC		
Estersol 180	E180	Polyesterimide (solderable)	—	MW-77	180
Amldester 200	A200	Polyesterimide	—	MW-74	200
Polysol-N 155	PN155	Polyurechane	Nylon	MW-80, MW-28	155, 130
Polysol 155	P155, G155	Polyurechane	—	MW-79, MW-75	155, 130
Polysol 155g	Pg155	Polyurechane	—	MW-75	130
Polysol 155p	Pp155, Gp155	Polyurechane	—	MW-79	155
Polysol 160	P160	Polyurechane	—	MW-79	155
Polysol 180	P180, G180	Polyurechane	—	MW-82 MW-79	180 155
Polysol 170	P170 or G170	Polyurechane	—	MW-79	155
Polysol-N 180	PN180	Polyurechane	Nylon	MW-83	180
Polysol P155p	P155p	Polyurechane	—	MW-79	155

Marking : Company name, material designation or marked designation and factory identification on package ok reel

See General Information preceding These Recognitions
 For use only in equipment where the acceptability of the combination is determined by Underwriters Laboratories Inc.

AR-001A

