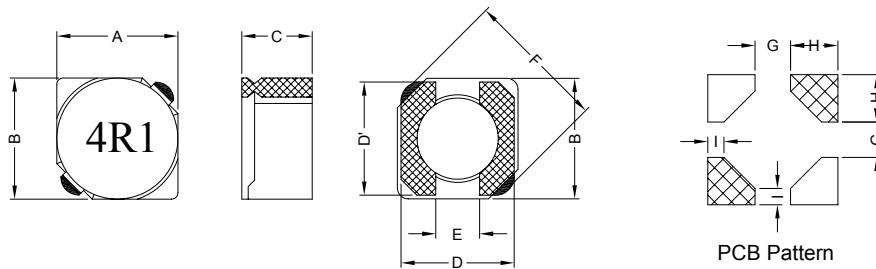


### 1. PART NO. EXPRESSION :

SSC05024R1YZF  
 (a) (b) (c) (d)(e)(f)

- (a) Series code
- (b) Dimension code
- (c) Inductance code : 4R1 = 4.10uH
- (d) Tolerance code : Y = ±30%
- (e) X, Y, Z : Standard part
- (f) F : Lead Free

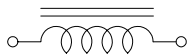
### 2. CONFIGURATION & DIMENSIONS :



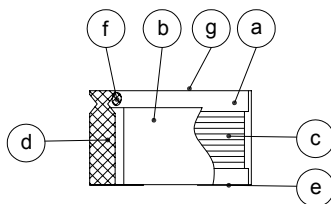
Unit : m/m

A	B	C	D	D'	E	F	G	H	I
5.70±0.3	5.70±0.3	2.00 Max.	5.50 Ref.	5.50 Ref.	2.00 Ref.	8.20 Max.	2.20 Ref.	2.05 Ref.	0.85 Ref.

### 3. SCHEMATIC :



### 4. MATERIALS :



- (a) Core : DR Ferrite Core
- (b) Core : RI Ferrite Core
- (c) Wire : Enamelled Copper Wire
- (d) Terminal : Au+Ni Copper Plate
- (e) Adhesive : Epoxy
- (f) Adhesive : Epoxy
- (g) Ink : Bon Margue

### 5. GENERAL SPECIFICATION :

- a) Temp. rise : 30°C Typ. at rated current
- b) Rated current : Base on temp. rise &  $\Delta L/L0A = 35\%$  Typ.
- c) Storage temp. : -40°C to +125°C
- d) Operating temp. : -40°C to +95°C
- e) Resistance to solder heat : 260°C.10 secs



**RoHS Compliant**

NOTE : Specifications subject to change without notice. Please check our website for latest information.

05.08.2008

## 6. ELECTRICAL CHARACTERISTICS :

Part No.	Inductance ( $\mu$ H)	Test Frequency (Hz)	RDC (m $\Omega$ ) Max.	IDC (A) Max.
SSC05024R1YZF	4.1 $\pm$ 30%	0.5V / 10K	57	1.95
SSC05025R4YZF	5.4 $\pm$ 30%	0.5V / 10K	76	1.60
SSC05026R2YZF	6.2 $\pm$ 30%	0.5V / 10K	96	1.40
SSC05028R9YZF	8.9 $\pm$ 30%	0.5V / 10K	116	1.25
SSC0502100YZF	10.0 $\pm$ 30%	0.5V / 10K	124	1.20
SSC0502120YZF	12.0 $\pm$ 30%	0.5V / 10K	153	1.10
SSC0502150YZF	15.0 $\pm$ 30%	0.5V / 10K	196	0.97
SSC0502180YZF	18.0 $\pm$ 30%	0.5V / 10K	210	0.85
SSC0502220YZF	22.0 $\pm$ 30%	0.5V / 10K	290	0.80
SSC0502270YZF	27.0 $\pm$ 30%	0.5V / 10K	330	0.75
SSC0502330YZF	33.0 $\pm$ 30%	0.5V / 10K	385	0.65
SSC0502390YZF	39.0 $\pm$ 30%	0.5V / 10K	520	0.57
SSC0502470YZF	47.0 $\pm$ 30%	0.5V / 10K	595	0.54
SSC0502560YZF	56.0 $\pm$ 30%	0.5V / 10K	665	0.50
SSC0502680YZF	68.0 $\pm$ 30%	0.5V / 10K	840	0.43
SSC0502820YZF	82.0 $\pm$ 30%	0.5V / 10K	978	0.41
SSC0502101YZF	100.0 $\pm$ 30%	0.5V / 10K	1200	0.36



RoHS Compliant

NOTE : Specifications subject to change without notice. Please check our website for latest information.

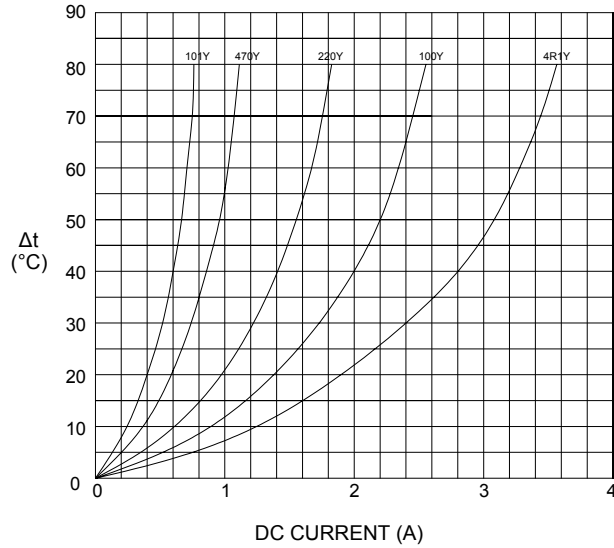
05.08.2008



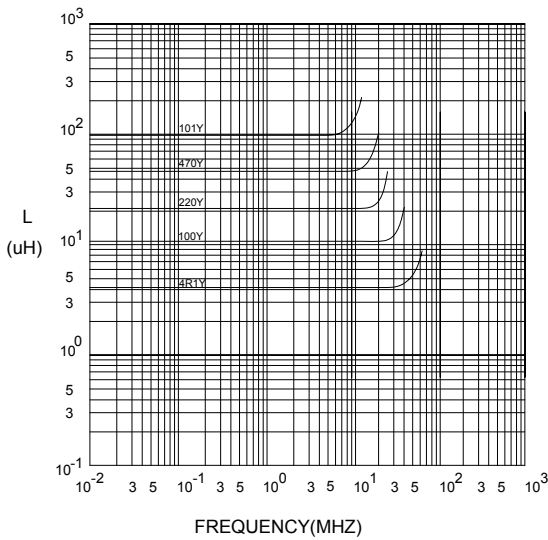
SUPERWORLD ELECTRONICS (S) PTE LTD

## 7. CHARACTERISTICS CURVES :

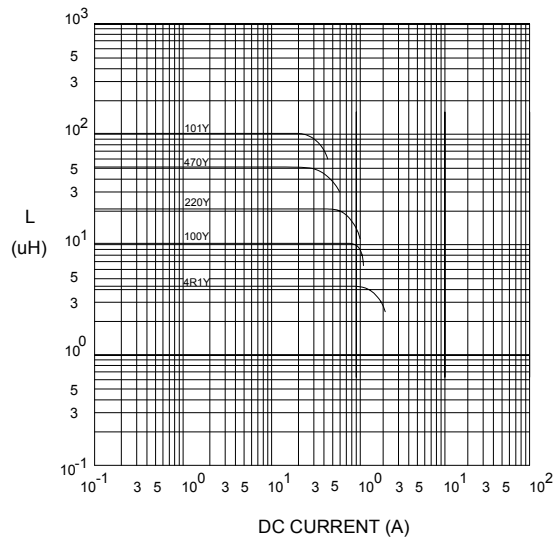
@ TEMP. RISE VS. DC SUPERPOSITION RESPONSE CURVE



@ INDUCTANCE VS. FREQUENCY RESPONSE CURVE



@ INDUCTANCE VS. DC SUPERPOSITION RESPONSE CURVE



NOTE : Specifications subject to change without notice. Please check our website for latest information.



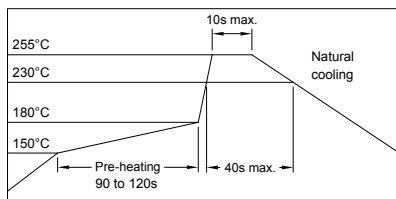
**RoHS Compliant**

05.08.2008



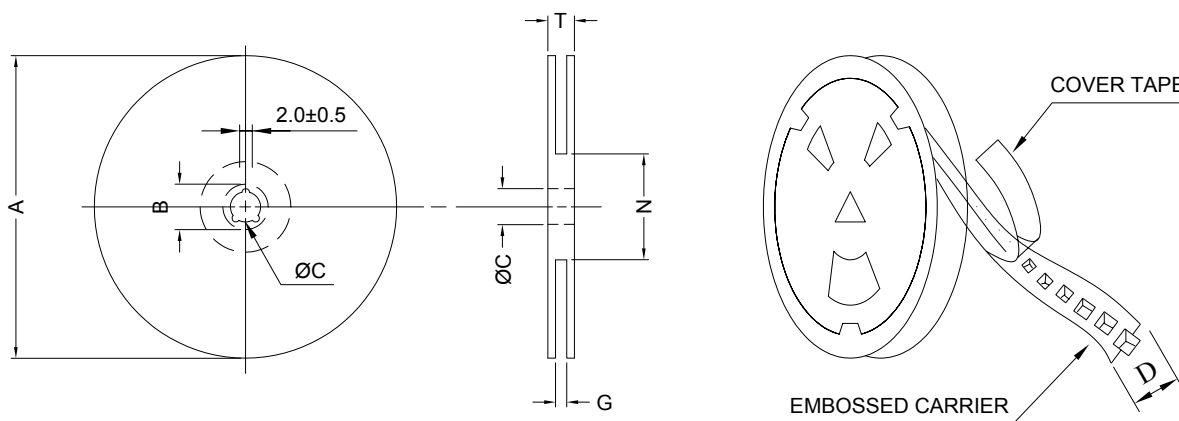
**SUPERWORLD ELECTRONICS (S) PTE LTD**

### RECOMMENDED SOLDERING CONDITIONS REFLOW SOLDERINGS

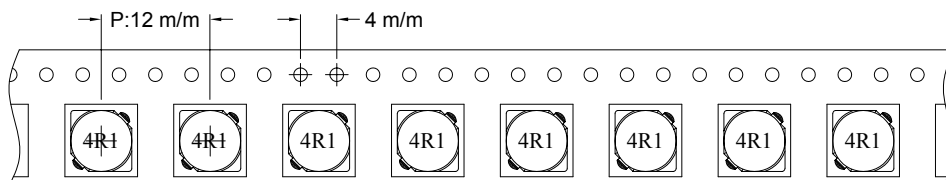


### 8. PACKAGING INFORMATION :

#### ( 1 ) CONFIGURATION



\* CARRIER TAPE WIDTH : D



#### ( 2 ) DIMENSIONS

Unit:m/m

STYLE	A	B	C	D	G	N	T
13-16	330	21±0.8	13	16	18 <sup>+0</sup>	50 <sup>-0</sup>	22.4

#### ( 3 ) Q'TY & G.W. PER PACKAGE

SERIES	INNER : REEL			OUTER : CARTON		
	Q'TY (PCS)	G.W. (gw)	STYLE	Q'TY (PCS)	G.W. (Kg)	SIZE (cm)
SSC0502	2000	2400	13-16	12000	17.9	40 x 40 x 24



**RoHS Compliant**

NOTE : Specifications subject to change without notice. Please check our website for latest information.

05.08.2008

### 9. RELIABILITY AND TEST CONDITION :

TEST ITEM	SPECIFICATION	TEST CONDITION															
SOLDERABILITY	MORE THAN 90% OF THE TERMINAL ELECTRODE SHALL BE COVERED WITH FRESH SOLDER.	PREHEAT : 125±25°C FOR 60 SECONDS SOLDER : 99%Sn/0.3%Ag/0.7Cu OR EQUIVALENT SOLDER TEMP. : 245±5°C FLUX : ROSIN DIP TIME : 4±1 SECONDS															
THERMAL SHOCK TEST  ( TEMP. CYCLE )	INDUCTANCE SHALL NOT CHANGE MORE THAN ±20%	<table border="0"> <tr> <td>ROOM TEMP.</td> <td>→</td> <td>-25±2°C</td> </tr> <tr> <td>15 MINUTES</td> <td></td> <td>30 MINUTES</td> </tr> <tr> <td colspan="3"> </td> </tr> <tr> <td>ROOM TEMP.</td> <td>→</td> <td>85±2°C</td> </tr> <tr> <td>15 MINUTES</td> <td></td> <td>30 MINUTES</td> </tr> </table> <p>TOTAL : 50 CYCLES</p>	ROOM TEMP.	→	-25±2°C	15 MINUTES		30 MINUTES				ROOM TEMP.	→	85±2°C	15 MINUTES		30 MINUTES
ROOM TEMP.	→	-25±2°C															
15 MINUTES		30 MINUTES															
ROOM TEMP.	→	85±2°C															
15 MINUTES		30 MINUTES															
HUMIDITY RESISTANCE TEST		TEMPERATURE : 40±2°C HUMIDITY : 90 ~ 95% APPLIED CURRENT : PER SPEC. TIME : 500 HOURS															
HIGH TEMP. RESISTANCE TEST		TEMPERATURE : 85±2°C APPLIED CURRENT : PER SPEC. TIME : 500 HOURS															

### 10. UL CARD :

<b>OBMW2</b>		<b>November 30, 2000</b>	
<b>Magnet Wire - Component</b>			
PACIFIC ELECTRIC WIRE & CABLE (SHENZHEN) CO LTD 607 BAOLONG INDUSTRIAL ESTATE LONGGANG, SHENZHEN GUANGDONG CHINA			E201757
Mtl Dsg	BC	Coating Type	ANSI Type
UEW/U		Polyurethane	—
PEW/U		Polyester	—
PEWH/U		Modified Polyester	MW5-C
PEW-NY/U		Polyester	MW30-C
HAI/U		Polyester(Amide)(Imide)	MW24-C
UEW-NY/U		Polyurethane	MW35,73
		Polyamide	MW80-C
		Polyamideimide	MW28-C
		Polyamide	130
			155°C
			180
			155
			200
			155
			130
<b>Marking: Company name and material designation or marked designation on package or reel, and Recognized Component Mark.</b>			
<b>See General Information Preceding These Recognitions</b>			
1/3/2001	Underwriters Laboratories Inc.		Card 1 of 2



**RoHS Compliant**

NOTE : Specifications subject to change without notice. Please check our website for latest information.

05.08.2008



**SUPERWORLD ELECTRONICS (S) PTE LTD**

PG. 5