

TC Series

50/60 Hz Industrial Current Transformer up to 600A

Features

- For 50/60 Hz current, from 25 to 600 A nominal primary current.
- High number of secondary turns for a precise measurements of primary current.
- Low value for secondary currents, directly suitable for electronic circuit measurements.
- Cases made of UL94-VO material.
- Insulation prim/sec 4K Vac.
- Operating temperature from -40° to 70° C.



Product List

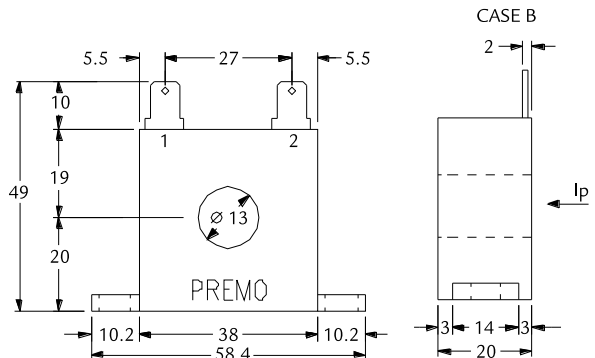
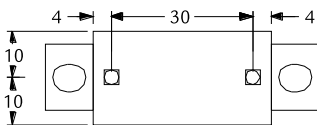
| Part Number | I _p /I _s (A) | N _s | VB (Vac) | RB (Ω) | Accuracy | Case | Outputs | Diagram |
|-------------|------------------------------------|----------------|----------|--------|----------|------|---------|---------|
| TC-1012505 | 25 / 0.05 | 500 | 2 | 40 | 2% | A | 1 - 2 | 1 |
| TC-1015005 | 50 / 0.05 | 1000 | 4 | 80 | 1% | A | 1 - 2 | 1 |
| TC-2011002 | 100 / 0.2 | 500 | 4 | 20 | 1% | B | 1 - 4 | 2 |
| TC-2011001 | 100 / 0.1 | 1000 | 4 | 20 | 0.5% | B | 1 - 4 | 2 |
| TC-3014004 | 400 / 0.4 | 1000 | 8 | 20 | 0.5% | C | 1 - 4 | 2 |
| TC-3014002 | 400 / 0.2 | 2000 | 4 | 20 | 0.25% | C | 1 - 4 | 2 |
| TC-3016006 | 600 / 0.6 | 1000 | 6 | 10 | 0.25% | C | 1 - 4 | 2 |
| TC-3016002 | 600 / 0.2 | 3000 | 4 | 20 | 0.5% | C | 1 - 4 | 2 |
| | 25 / 0.2 | 125 | 4 | 20 | 2.5% | B | 1 - 2 | 3 |
| TC-2031002 | 50 / 0.2 | 250 | 4 | 20 | 1.5% | B | 1 - 3 | 3 |
| | 100 / 0.2 | 500 | 4 | 20 | 1% | B | 1 - 4 | 3 |
| | 200 / 0.2 | 1000 | 4 | 20 | 0.5% | C | 1 - 2 | 3 |
| TC-3034002 | 300 / 0.2 | 1500 | 4 | 20 | 0.35% | C | 1 - 3 | 3 |
| | 400 / 0.2 | 2000 | 4 | 20 | 0.25% | C | 1 - 4 | 3 |
| | 200 / 0.4 | 500 | 8 | 20 | 1% | C | 1 - 2 | 3 |
| TC-3036004 | 400 / 0.4 | 1000 | 8 | 20 | 0.5% | C | 1 - 3 | 3 |
| | 600 / 0.4 | 1500 | 8 | 20 | 0.25% | C | 1 - 4 | 3 |

Notes:

I_p: Primary alternating current (rms) I_s: Secondary alternating current (rms) N_s: Secondary turns.
 VB: Voltage in RB (rms) RB: Secondary load resistance.

Dimensions

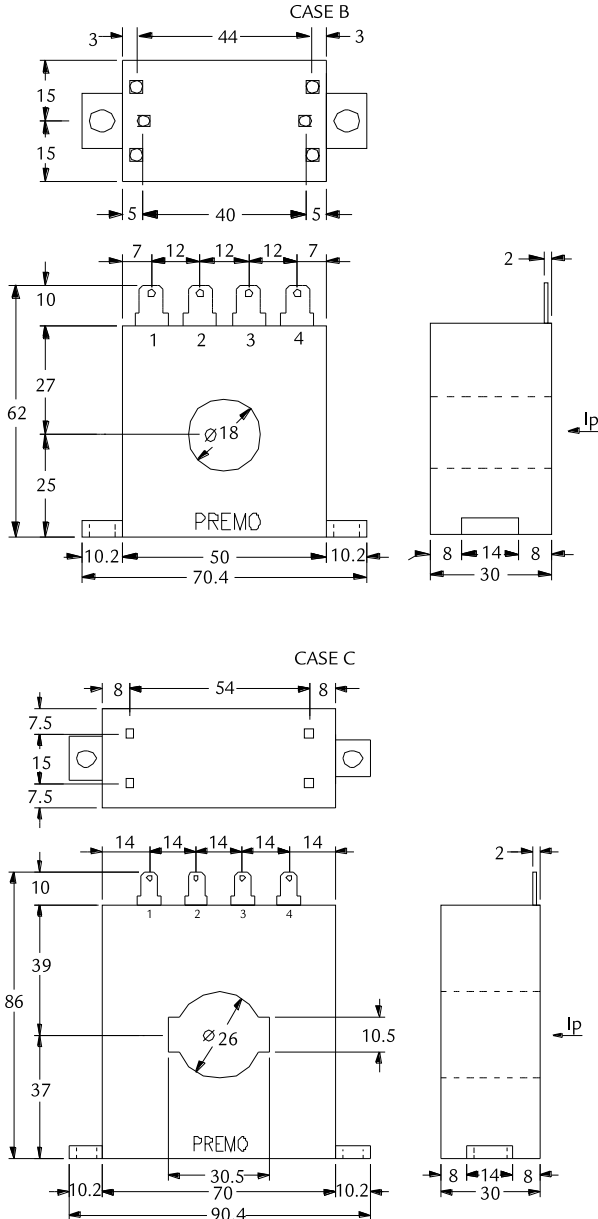
CASE A



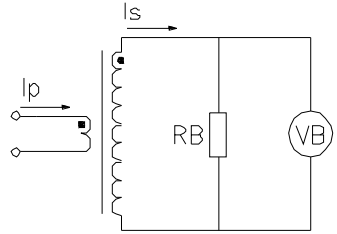
TC Series

50/60 Hz Industrial Current Transformer up to 600A

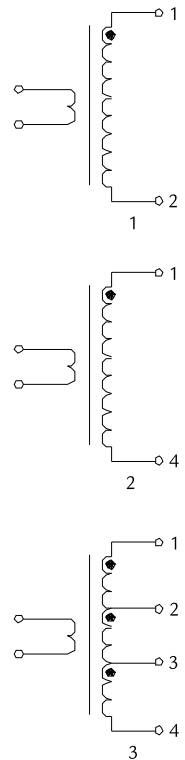
Dimensions



Test Circuit



Electric Diagram



FIXATION:

Holes for self-tapping screws 2.9 x 9 or M4 screws and nuts.
Dimensions in mm.
Pin dimensions: 6.35 x 0.80 mm.