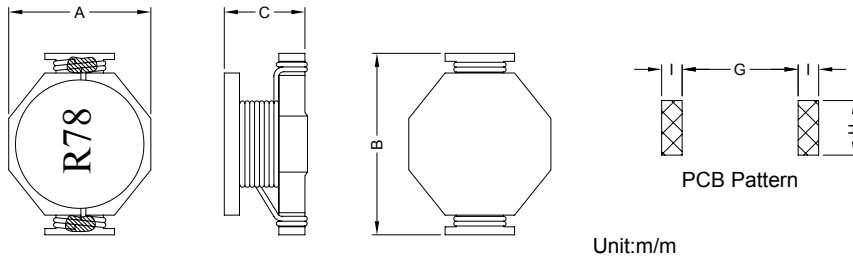


### 1. PART NO. EXPRESSION :

P
D
H
5
0
2
2
R
7
8
M
Z
F

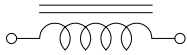
- (a) Series code
- (b) Dimension code
- (c) Inductance code : R78 = 0.78uH
- (d) Tolerance code : M = ±20%
- (e) X, Y, Z : Standard part
- (f) F : Lead Free

### 2. CONFIGURATION & DIMENSIONS :

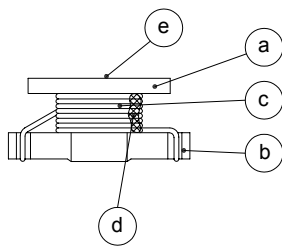


A	B	C	G	H	I
16.26 Max.	22.35 Max.	8.00 Max.	14.35 Ref.	8.64 Ref.	3.18 Ref.

### 3. SCHEMATIC :



### 4. MATERIALS :



- (a) Core : DR Ferrite Core
- (b) Base : Phenolic
- (c) Wire : Enamelled Copper Wire
- (d) Adhesive : Epoxy
- (e) Ink : Bon Margue

### 5. GENERAL SPECIFICATION :

- a) Temp. rise : 40°C Typ.
- b) Isat : ΔL/L0A = 10% Typ.
- c) Operating temp. : -40°C to +85°C
- d) Resistance to solder heat : 260°C.10 secs



**RoHS Compliant**

NOTE : Specifications subject to change without notice. Please check our website for latest information.

05.05.2008



**SUPERWORLD ELECTRONICS (S) PTE LTD**

### 6. ELECTRICAL CHARACTERISTICS :

Part No.	Inductance ( $\mu$ H)	Test Freq. (Hz)	SRF (MHz) Typ.	RDC (m $\Omega$ ) Max.	Isat (A)	Irms (A)
PDH5022R78MZF	0.78 $\pm$ 20%	0.1V/100K	156	2.6	30.0	15.0
PDH50221R5MZF	1.50 $\pm$ 20%	0.1V/100K	100	4.0	25.0	15.0
PDH50222R2MZF	2.20 $\pm$ 20%	0.1V/100K	75	6.1	20.0	12.0
PDH50223R3MZF	3.30 $\pm$ 20%	0.1V/100K	60	8.6	17.0	10.0
PDH50223R9MZF	3.90 $\pm$ 20%	0.1V/100K	55	10.0	15.0	9.0
PDH50224R7MZF	4.70 $\pm$ 20%	0.1V/100K	40	14.0	13.0	8.4
PDH50226R0MZF	6.00 $\pm$ 20%	0.1V/100K	35	17.0	12.0	7.5
PDH50227R8MZF	7.80 $\pm$ 20%	0.1V/100K	35	18.0	11.0	7.5
PDH5022100MZF	10.00 $\pm$ 20%	0.1V/100K	28	26.0	10.0	6.0
PDH5022150MZF	15.00 $\pm$ 20%	0.1V/100K	20	32.0	8.0	4.4



**RoHS Compliant**

NOTE : Specifications subject to change without notice. Please check our website for latest information.

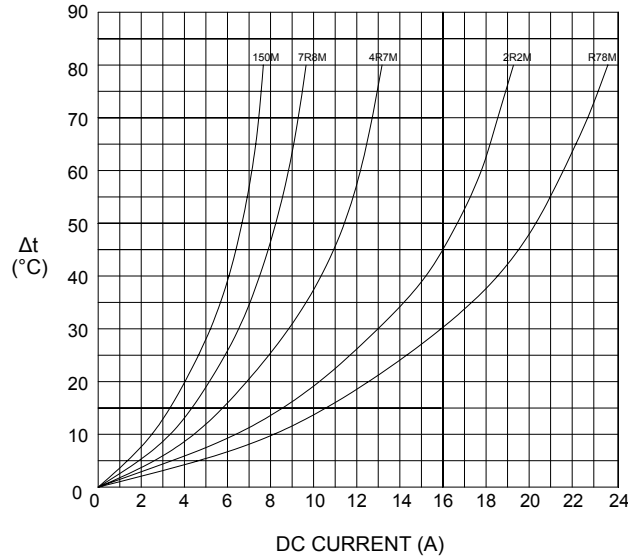
05.05.2008



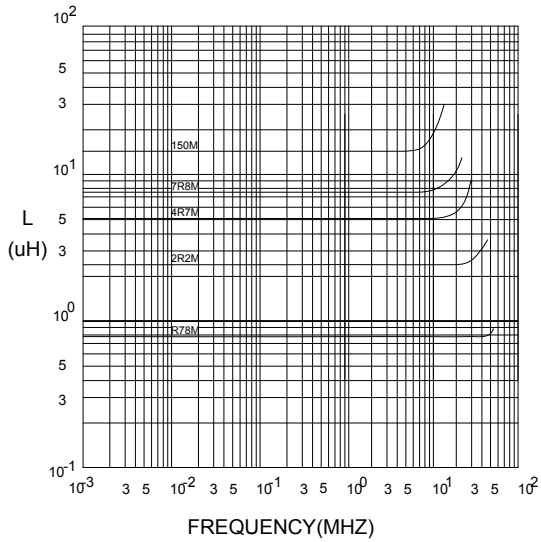
**SUPERWORLD ELECTRONICS (S) PTE LTD**

## 7. CHARACTERISTICS CURVES :

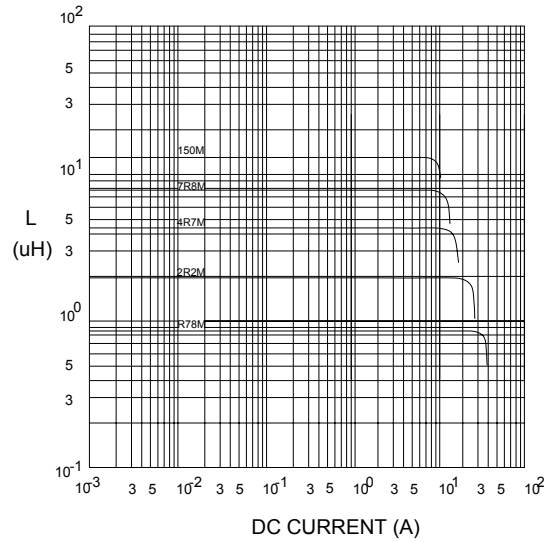
@ TEMP. RISE VS. DC SUPERPOSITION RESPONSE CURVE



@ INDUCTANCE VS. FREQUENCY RESPONSE CURVE



@ INDUCTANCE VS. DC SUPERPOSITION RESPONSE CURVE



NOTE : Specifications subject to change without notice. Please check our website for latest information.



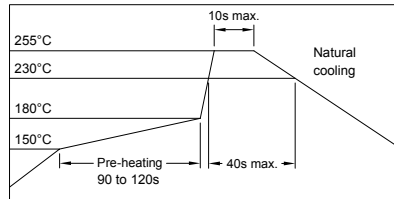
**RoHS Compliant**

05.05.2008



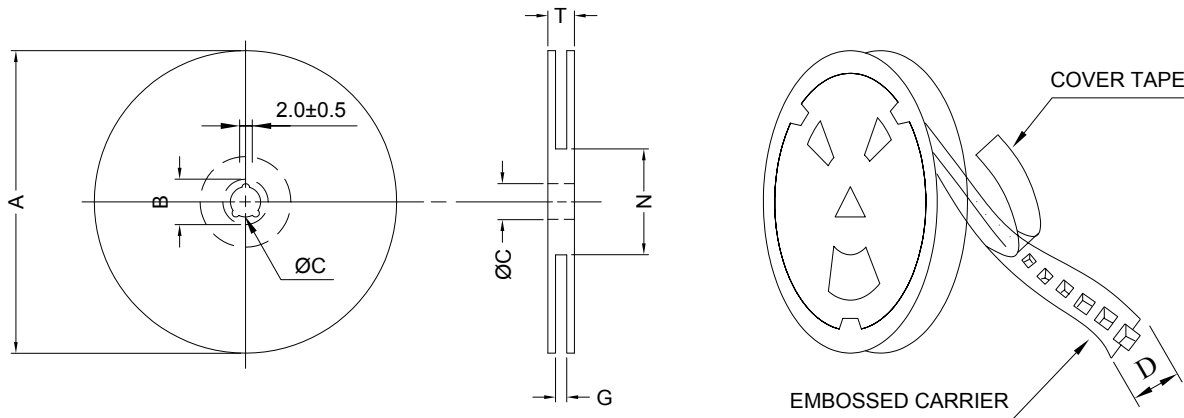
**SUPERWORLD ELECTRONICS (S) PTE LTD**

### RECOMMENDED SOLDERING CONDITIONS REFLOW SOLDERINGS

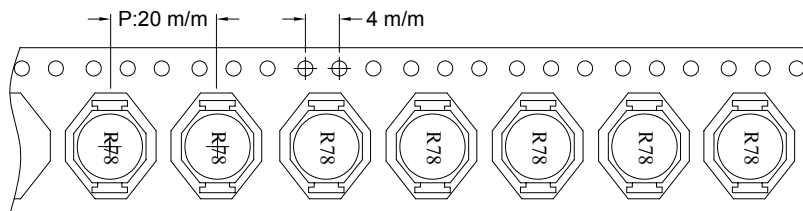


### 8. PACKAGING INFORMATION :

#### ( 1 ) CONFIGURATION



\* CARRIER TAPE WIDTH : D



#### ( 2 ) DIMENSIONS

Unit:m/m

STYLE	A	B	C	D	G	N	T
13-32	330	21±0.8	13	32	34 <sup>+0</sup>	100 <sup>-0</sup>	38.4

#### ( 3 ) Q'TY & G.W. PER PACKAGE

SERIES	INNER : REEL			OUTER : CARTON		
	Q'TY (PCS)	G.W. (gw)	STYLE	Q'TY (PCS)	G.W. (Kg)	SIZE (cm)
PDH5022	250	1250	13-32	1000	8.5	40 x 40 x 26



**RoHS Compliant**

NOTE : Specifications subject to change without notice. Please check our website for latest information.

05.05.2008



**SUPERWORLD ELECTRONICS (S) PTE LTD**

### 9. RELIABILITY AND TEST CONDITION :

TEST ITEM	SPECIFICATION	TEST CONDITION
SOLDERABILITY	MORE THAN 90% OF THE TERMINAL ELECTRODE SHALL BE COVERED WITH FRESH SOLDER.	PREHEAT : 125±25°C FOR 60 SECONDS SOLDER : 99%Sn/0.3%Ag/0.7%Cu OR EQUIVALENT SOLDER TEMP. : 245±5°C FLUX : ROSIN DIP TIME : 4±1 SECONDS
THERMAL SHOCK TEST  ( TEMP. CYCLE )	INDUCTANCE SHALL NOT CHANGE MORE THAN ±20%	ROOM TEMP. → -25±2°C 15 MINUTES → 30 MINUTES  ROOM TEMP. → 85±2°C 15 MINUTES → 30 MINUTES  TOTAL : 50 CYCLES
HUMIDITY RESISTANCE TEST		TEMPERATURE : 40±2°C HUMIDITY : 90 ~ 95% APPLIED CURRENT : PER SPEC. TIME : 500 HOURS
HIGH TEMP. RESISTANCE TEST		TEMPERATURE : 85±2°C APPLIED CURRENT : PER SPEC. TIME : 500 HOURS



**RoHS Compliant**

NOTE : Specifications subject to change without notice. Please check our website for latest information.

05.05.2008



**SUPERWORLD ELECTRONICS (S) PTE LTD**

**10. UL CARD :**

**OBMW2** **November 30, 2000**  
**Magnet Wire - Component**  
**PACIFIC ELECTRIC WIRE & CABLE (SHENZHEN) CO LTD** **E201757**  
**607 BAOLONG INDUSTRIAL ESTATE LONGGANG, SHENZHEN**  
**GUANGDONG CHINA**

Mtl Dsg	BC	Coating Type	TC	ANSI Type	TI
UEW/U		Polyurethane	—	—	130
PEW/U		Polyester	—	MW5-C	155°C
PEWH/U		Modified Polyester	—	MW30-C	180
PEW-NY/U		Polyester	Polyamide	MW24-C	155
HAI/U		Polyester(Amide)(Imide)	Polyamideimide	MW35,73	200
UEW-NY/U		Polyurethane	Polyamide	MW80-C	155
				MW28-C	130

**Marking: Company name and material designation or marked designation on package or reel, and Recognized Component Mark.**

See General Information Preceding These Recognitions

1/3/2001 Underwriters Laboratories Inc. Card 1 of 2

**QMFZ2** **January 15, 1991**  
**Component-Plastics**  
**SUMITOMO BAKELITE CO LTD** **E41429 (M)**  
**( 11-cont. from I card )**

PM-9630	BK	0.40	94V-0	150	150	150	—	—	—	—	—
		0.51	94V-0	150	150	150	0	0	—	—	—
		3.18	94V-0	150	150	150	0	1	0	4	3
PM-8315	BK	0.50	94V-0	150	150	150	3	0	0	—	—
PM-8315J	BN	0.71	94V-0	150	150	150	2	0	0	—	—
		1.47	94V-0	150	150	150	0	2	0	—	—
		3.05	94V-0	150	150	150	0	1	0	5	4
		6.10	94V-0	150	150	150	0	1	0	5	4
PM-8315K	BK	0.78	94V-1	150	150	150	—	—	—	—	—
		1.52	94V-0	150	150	150	—	—	—	—	—
PM-8320J	BK	0.71	<b>94HB</b>	150	150	150	—	—	—	—	—
PM-8330	BK	0.71	94V-1	150	150	150	—	—	—	—	—
		1.57	94V-0	150	150	150	—	—	—	—	—
PM-8400	BK	0.71	<b>94HB</b>	150	150	150	—	—	—	—	—
PM-9830	BK	0.69	94V-0	150	150	150	0	0	—	—	—
		3.18	94V-0	150	150	150	0	0	0	4	3

Reports: March 29, 1985: May 14, 1974: September 16, 1971: September 16, 1971:  
 September 16, 1971: September 16, 1971: March 29, 1985.

**Replaces E4142911 dated February 28, 1990.** **(Cont. on J card)**  
**683540014 N7047 Underwriters Laboratories Inc. ®** **D11/0043416**



**RoHS Compliant**

NOTE : Specifications subject to change without notice. Please check our website for latest information.

05.05.2008



**SUPERWORLD ELECTRONICS (S) PTE LTD**