

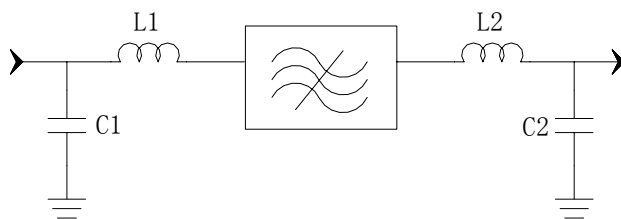
Specifications

Parameter	Unit	Minimum	Typical	Maximum
Center Frequency	MHz		297.5	
Insertion Loss	dB		12.5	14
1 dB Bandwidth	MHz	35	37.3	
3 dB Bandwidth	MHz		38.9	
35 dB Bandwidth	MHz		44.2	67
Passband Variation	dB		0.6	
Ultimate Rejection($f_0 \pm 35\text{MHz}$)	dB	35	40	
Group Delay Variation	nsec		60	
Substrate Material			YZ	
Ambient Temperature	°C		25	
Package Size		SMD0705A (7x5x1.6mm ³)		

Notes:

1. All specifications are based on the test circuit shown
2. In production, devices will be tested at room temperature to a guardbanded specification to ensure electrical compliance over temperature
3. Electrical margin has been built into the design to account for the variations due to temperature drift and manufacturing tolerances
4. This is the optimum impedance in order to achieve the performance show

Matching Configuration



L1=39nH L2=27nH
C1=10pF C2=12pF

Source/Load Impedance=50 ohm

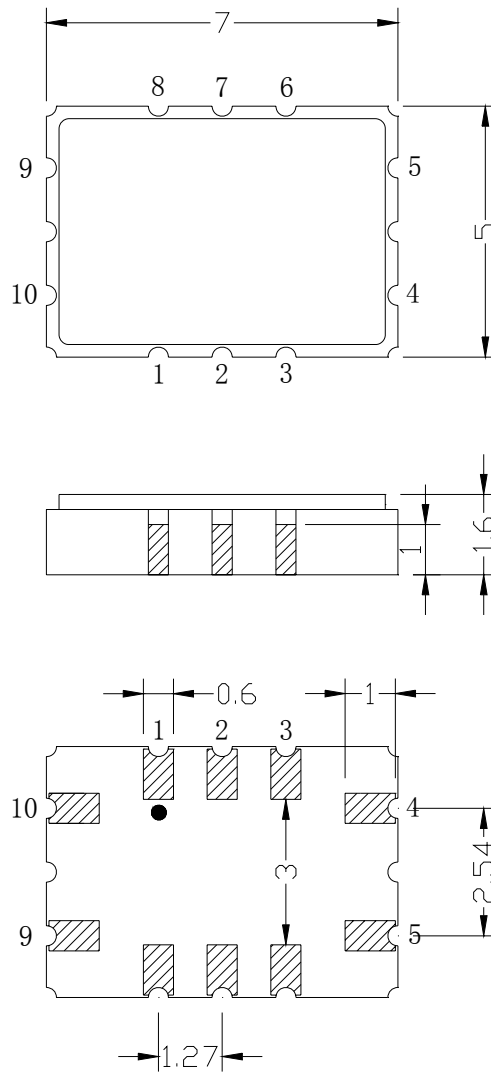
Notes - Component values may change depending on board layout.



SIPAT Co., Ltd.
(CETC No. 26 Research Institute)
Nanping Huayuan Road No. 14
Chongqing, China, 400060

Part Number	LB297DS01	
Rev. Date	2005-6-27	
Rev.	4.0	Page 1/3

Package Dimension



Input:9
Output:4

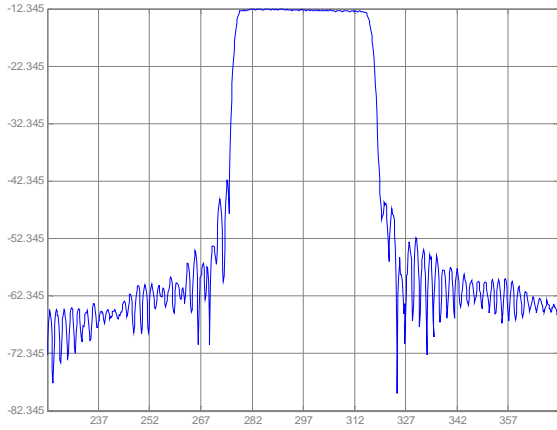


SIPAT Co., Ltd.
(CETC No. 26 Research Institute)
Nanping Huayuan Road No. 14
Chongqing, China, 400060

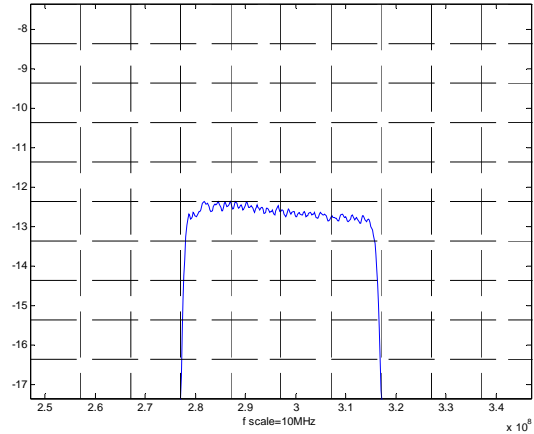
Part Number	LB297DS01	
Rev. Date	2005-6-27	
Rev.	4.0	Page 2/3

Typical Performance

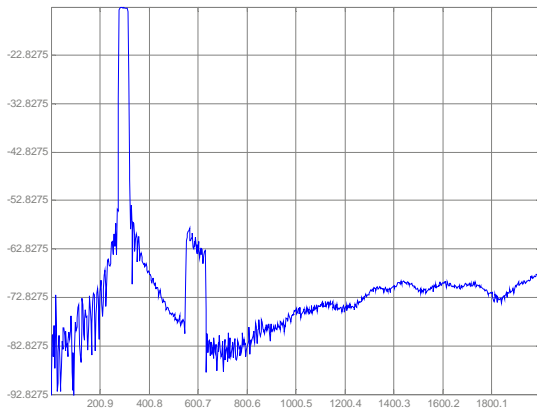
Frequency Respond



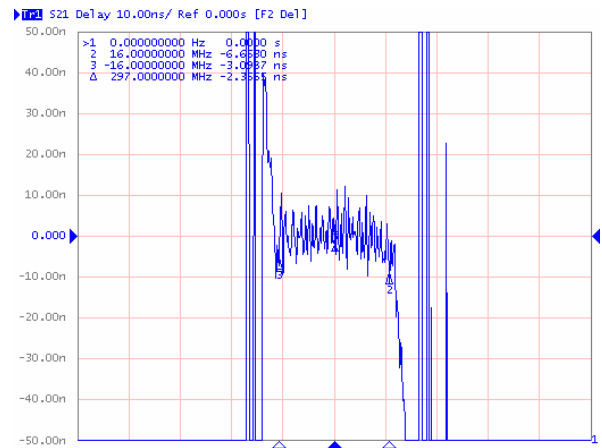
Passband Respond



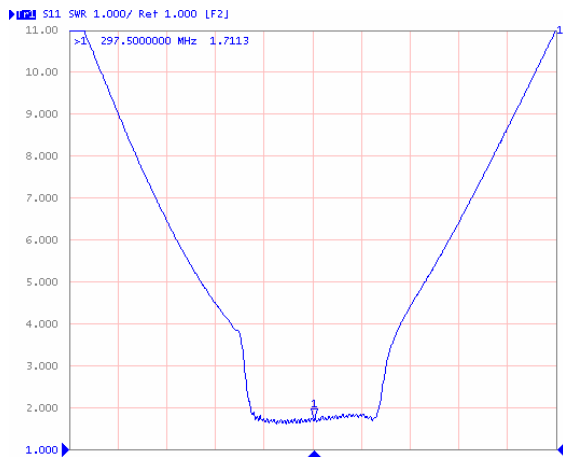
Wideband Respond



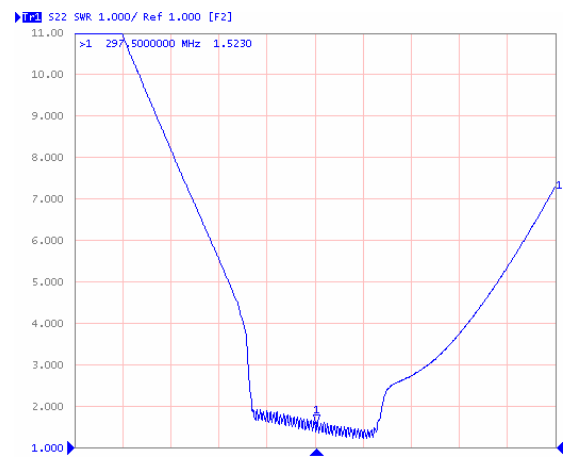
Group delay variation($f_0 \pm 16\text{MHz}$)



VSWR S11



VSWR S22



SIPAT Co., Ltd.
(CETC No. 26 Research Institute)
Nanping Huayuan Road No. 14
Chongqing, China, 400060

Part Number

LB297DS01

Rev. Date

2005-6-27

Rev.

4.0

Page 3/3