



## A5A:1250.XX

### VOLTAGE RATINGS

Part Number	$V_{RRM}, V_R$ (V) Max. rep. peak reverse voltage		$V_{RSM}, V_R$ (V) Max. non-rep. peak reverse voltage
	$T_J = 0$ to $180^\circ\text{C}$	$T_J = -40$ to $0^\circ\text{C}$	$T_J = 25$ to $180^\circ\text{C}$
	A5A:1250.02	200	200
A5A:1250.04	400	400	500
A5A:1250.06	600	600	700
A5A:1250.08	800	800	900
A5A:1250.10	1000	1000	1100
A5A:1250.12	1200	1200	1300

### MAXIMUM ALLOWABLE RATINGS

PARAMETER	VALUE	UNITS	NOTES
$T_J$ Junction Temperature	-40 to 180	$^\circ\text{C}$	-
$T_{stg}$ Storage Temperature	-40 to 180	$^\circ\text{C}$	-
$I_{F(AV)}$ Max. Av. current @ Max. $T_C$	1250	A	180 half sine wave
	125	$^\circ\text{C}$	
$I_{F(RMS)}$ Nom. RMS current	1980	A	-
$I_{FSM}$ Max. Peak non-rep. surge current	15650	A	50 Hz half cycle sine wave Initial $T_J = 180^\circ\text{C}$ , rated $V_{RRM}$ applied after surge.
	16400		60 Hz half cycle sine wave
	18600		50 Hz half cycle sine wave Initial $T_J = 180^\circ\text{C}$ , no voltage applied after surge.
	19500		60 Hz half cycle sine wave
$I^2t$ Max. $I^2t$ capability	1275	$\text{kA}^2\text{s}$	$t = 10\text{ms}$ Initial $T_J = 180^\circ\text{C}$ , rated $V_{RRM}$ applied after surge.
	1390		$t = 8.3\text{ms}$
	1454		$t = 10\text{ms}$ Initial $T_J = 180^\circ\text{C}$ , no voltage applied after surge.
	1585		$t = 8.3\text{ms}$
$I^2t^{1/2}$ Max. $I^2t^{1/2}$ capability	17350	$\text{kA}^2\text{s}^{1/2}$	Initial $T_J = 180^\circ\text{C}$ , no voltage applied after surge. $I^2t$ for time $t_x = I^2t^{1/2} * t_x^{1/2}$ . ( $0.1 < t_x < 10\text{ms}$ ).
F Mounting Force	1250	N.m	-



# A5A:1250.XX

## CHARACTERISTICS

PARAMETER	MIN.	TYP.	MAX.	UNITS	TEST CONDITIONS
V <sub>FM</sub> Peak forward voltage	---	1.40	1.57	V	Initial T <sub>J</sub> = 25°C, 50-60Hz half sine, I <sub>peak</sub> = 3267A.
V <sub>F(TO)1</sub> Low-level threshold	---	---	0.79	V	T <sub>J</sub> = 180°C Av. power = V <sub>F(TO)</sub> * I <sub>F(AV)</sub> + r <sub>F</sub> * [I <sub>F(RMS)</sub> ] <sup>2</sup>
V <sub>F(TO)2</sub> High-level threshold	---	---	0.853		
r <sub>F1</sub> Low-level resistance	---	---	0.237	m	Use low values for I <sub>FM</sub> < I <sub>F(AV)</sub>
r <sub>F2</sub> High-level resistance	---	---	0.205		
I <sub>RM</sub> Peak reverse current	---	20	50	mA	T <sub>J</sub> = 180°C. Max. rated V <sub>RRM</sub>
R <sub>thJC</sub> Thermal resistance, junction-to-case	---	---	0.050	°C/W	DC operation, double side
	---	---	0.054	°C/W	180° sine wave, double side
	---	---	0.055	°C/W	120° rectangular wave, double side
R <sub>thCS</sub> Thermal resistance, case-to-sink	---	---	0.015	°C/W	Mtg. Surface smooth, flat and greased.
wt Weight	---	255(9)	---	g(oz.)	---
Case Style	TO-200AC				---

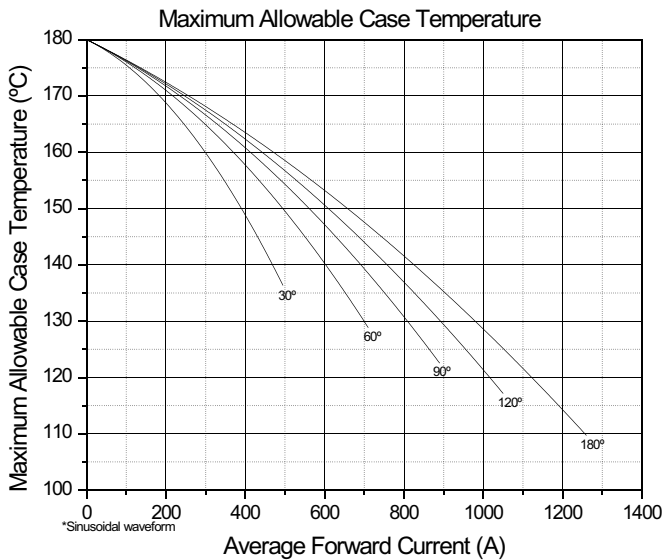


Fig. 1 - Current Ratings Characteristics

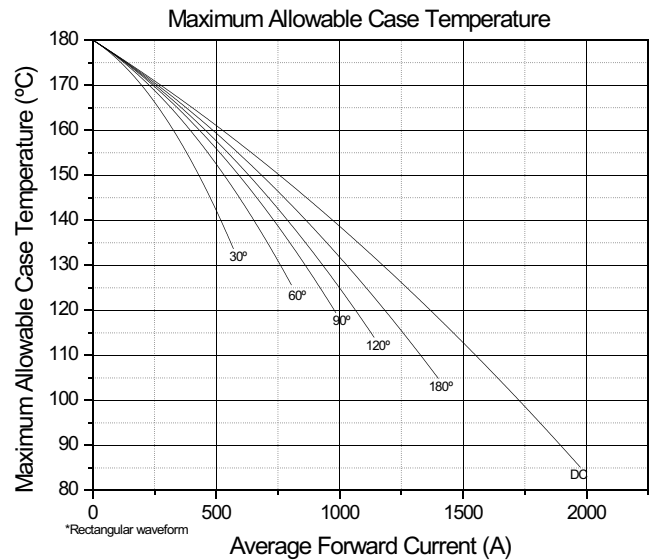


Fig. 2 - Current Ratings Characteristics



# A5A:1250.XX

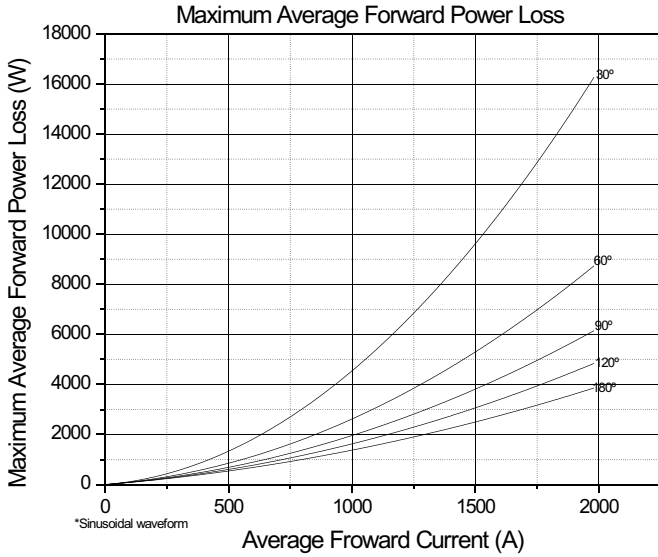


Fig. 3 - On-State Power Loss Characteristics

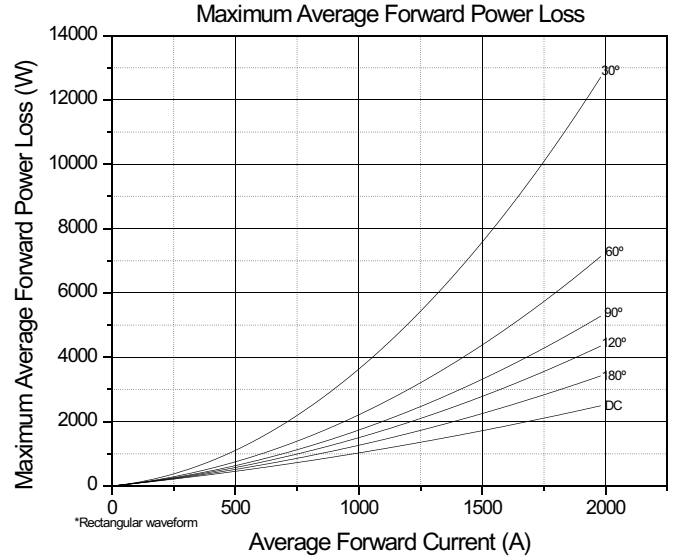


Fig. 4 - On-State Power Loss Characteristics

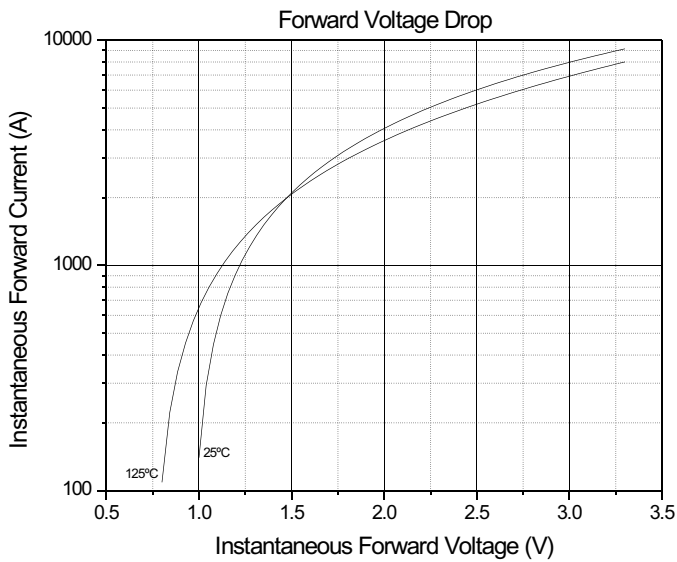


Fig. 5 - Forward Voltage Drop Characteristics

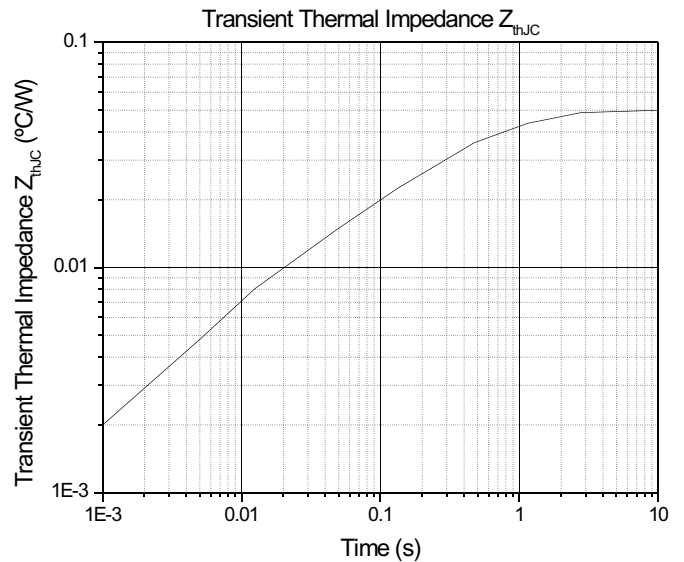
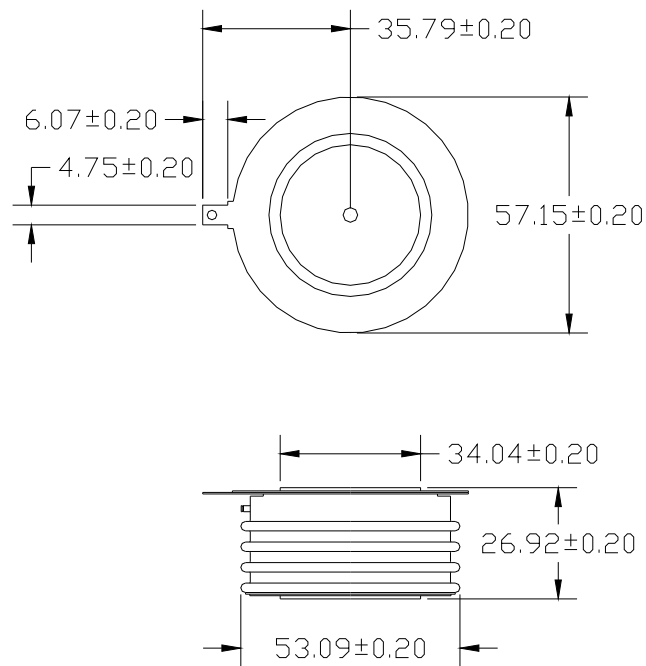


Fig. 6 - Transient Thermal Impedance Characteristics



## A5A:1250.XX

### TO-200AC



**Fig. 7 - Outline Characteristics**