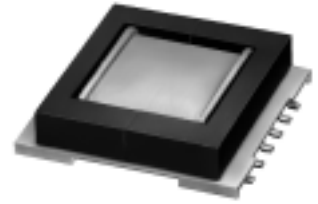


Type: CEPH205

◆ **Product Description**

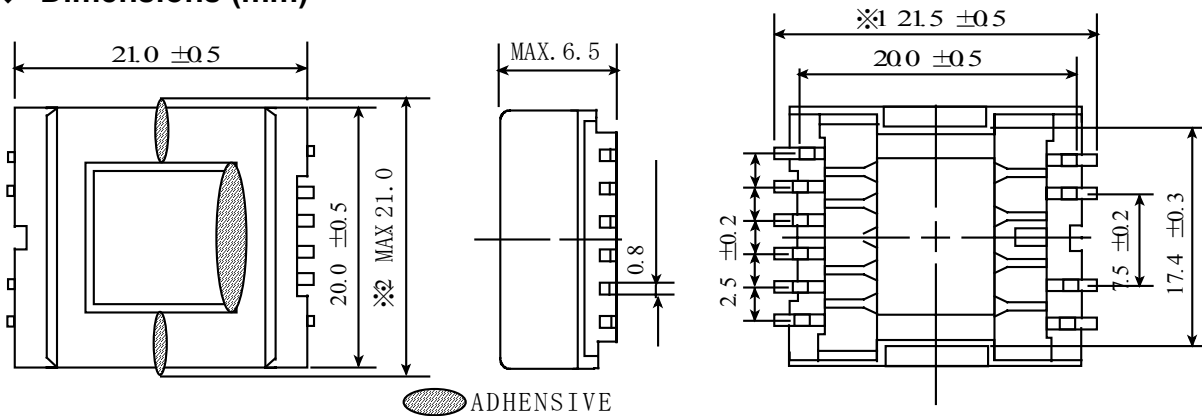
- 22.0×21.0mm Max.(L×W), 5.8mm Max. Height .
- In addition to the typical versions of parameters shown here, custom parameters are available to meet your exact requirements



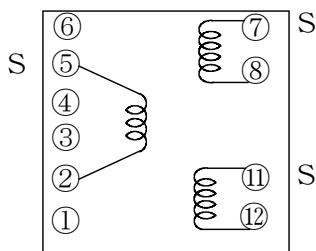
◆ **Feature**

- Magnetically shielded construction.
- Max. Operating frequency 500kHz,Max. Operating Power 4.2W (500kHz).
- Ideally used in Portable equipment, EL driver etc.
- RoHS Compliance

◆ **Dimensions (mm)**

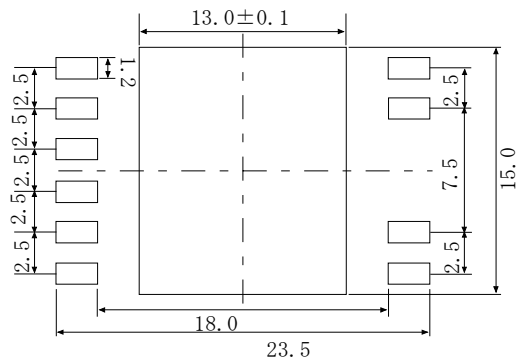


◆ **Schematics (Bottom)**



"S" indicates winding start.

◆ **Land Pattern (mm)**



◆ **Specification**

Sample No.	Inductance (5-2) 1kHz/1V	D.C.R.(mΩ) Max.(Typ)(5-2) at 20°C	Hi-pot (50/60Hz) (2,5-7,8,11,12)	Hi-pot (50/60Hz) (7,8-11,12)
6395-T012	35 μ H±30%	150 (120)	AC 2500Vrms 1Min.	AC 1500Vrms 1Min.