

Monolithic crystal filter

MQF40.048-0800/02



Application

- 4 pol filter
- i.f.- filter
- use in mobile and stationary transceivers

Limiting values

		Unit	Value
Center frequency	f_0	MHz	40.048
Insertion loss		dB	≤ 3.0
Pass band at 1.0 dB		kHz	± 4.00
Ripple in pass band	$f_0 \pm 4.00$ kHz	dB	≤ 1.0
Stop band attenuation	$f_0 \pm 76$ kHz	dB	≥ 60
Alternate attenuation	0.4...39.942 MHz	dB	> 60
	$f_0 + 76$ kHz...250 MHz	dB	> 60
Spurious responses		dB	> 40
IP3	Outband/Inband	dBm	32/25

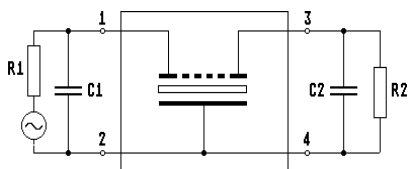
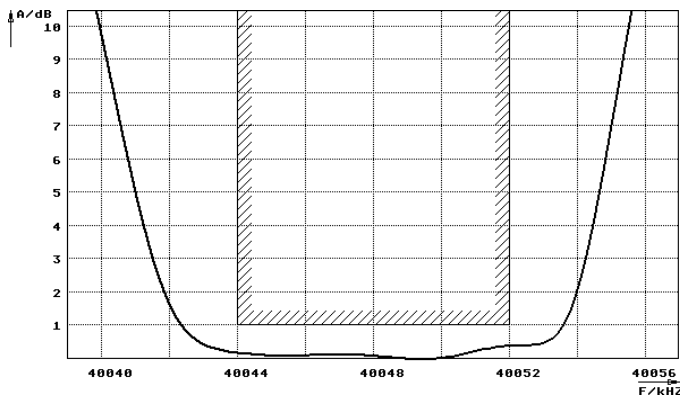
Terminating impedance Z

R1 C1	Ohm/pF	50 0
R2 C2	Ohm/pF	50 0

Operating temp. range	$^{\circ}\text{C}$	-40... +85
-----------------------	--------------------	------------

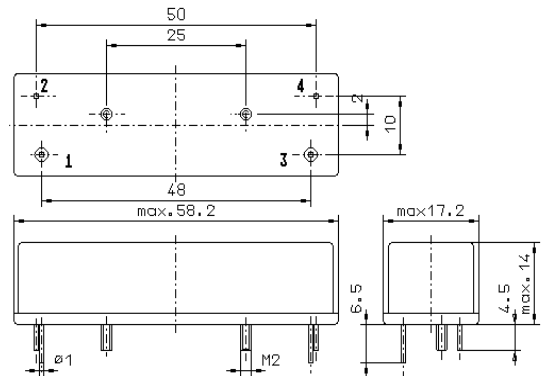
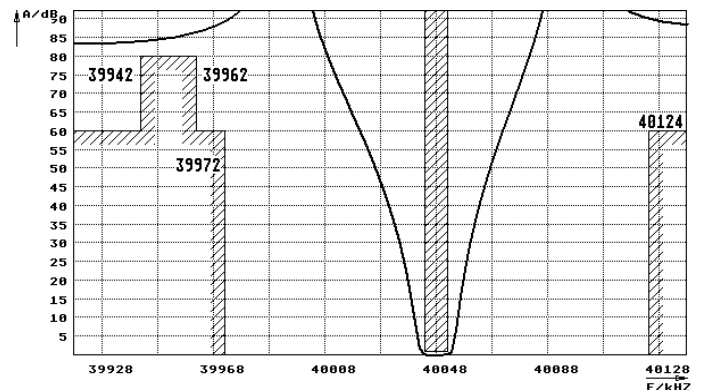
Characteristics MQF40.048-0800/02

Pass band



Pin connections: 1 Input
2 Input-E
3 Output
4 Output-E

Stop band



GM7