

Monolithic crystal filter

MQF21.4-2000/24



Application

- 10 pol filter
- i.f.- filter
- use in mobile and stationary transceivers

Limiting values

		Unit	Value
Center frequency	f_0	MHz	21.4
Insertion loss		dB	≤ 5.0
Pass band at 3.0 dB		kHz	± 10.00
Ripple in pass band	$f_0 \pm 8.00$ kHz	dB	≤ 2.0
Stop band attenuation	$f_0 \pm 25$ kHz	dB	≥ 80
Alternate attenuation	$f_0 \pm 100 \dots 5000$ kHz	dB	> 90 except spurious
Group delay distortion	$f_0 \pm 4$ kHz	μs	< 10
IMD ($P_0 = -6$ dBm)	$f_1 = f_0 \pm 200, f_2 = f_0 \pm 400$ kHz	dB	> 80

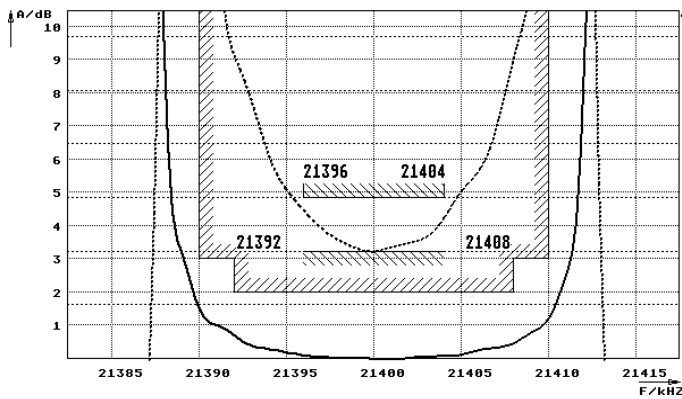
Terminating impedance Z

R1 C1	Ohm/pF	50 0
R2 C2	Ohm/pF	50 0

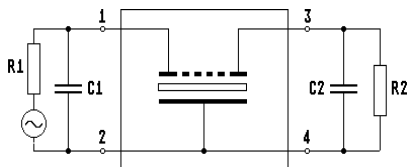
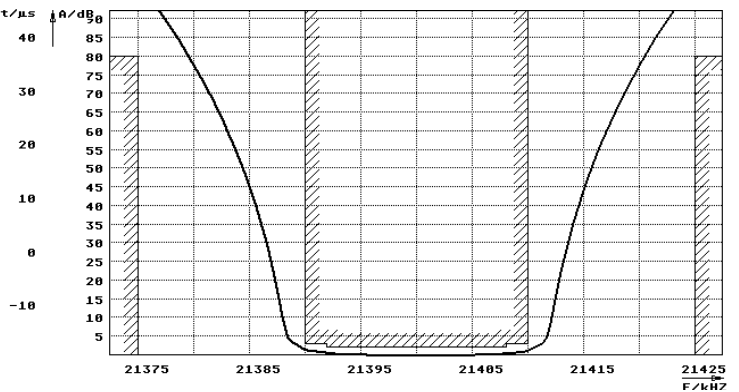
Operating temp. range	$^{\circ}C$	-20... +60
-----------------------	-------------	------------

Characteristics MQF21.4-2000/24

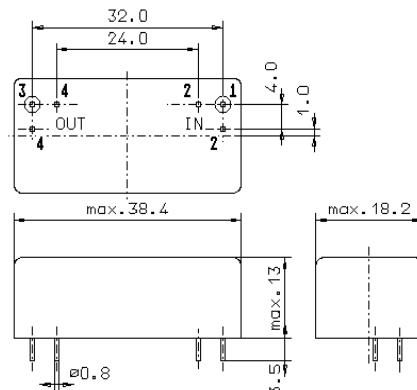
Pass band



Stop band



Pin connections: 1 Input
2 Input-E
3 Output
4 Output-E



GM17