

MF1053S-2

FOR DIGITAL MOBILE TELEPHONE, Rx

MF1053S-2

DESCRIPTION

This SAW filter for the receiving RF circuit of digital mobile communication equipment operating at 810 MHz ~ 830 MHz.

FEATURES

1. SMD package insures small size, lightweight.
2. Adjustment free.
3. High stop band attenuation and low insertion loss.
4. Wide and sharp passband characteristics.
5. High stability and reliability.
6. Designed for reflow solderings.

APPLICATION

- Digital mobile cellular telephone
- Portable digital cellular telephone
- Wireless equipment

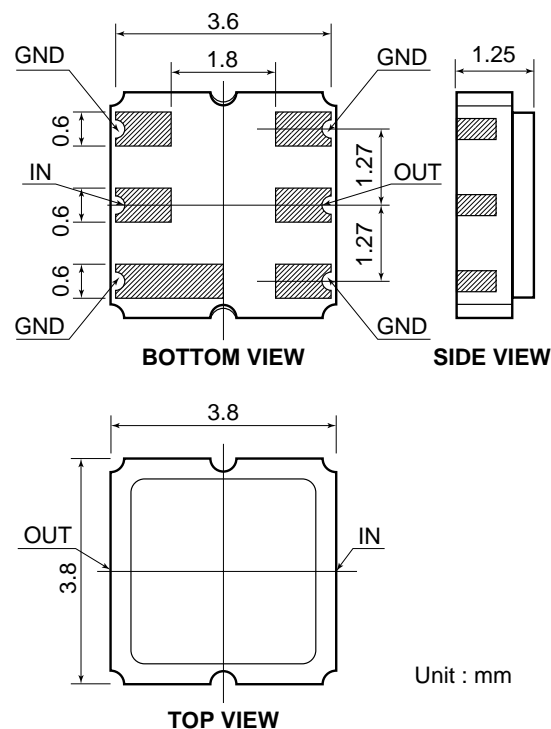
MAXIMUM RATINGS

Rating	Value	Unit
Input Power	50	mW
Operating Temperature Range	-20 to 75	°C
Storage Temperature Range	-30 to 85	°C

ELECTRICAL PERFORMANCE

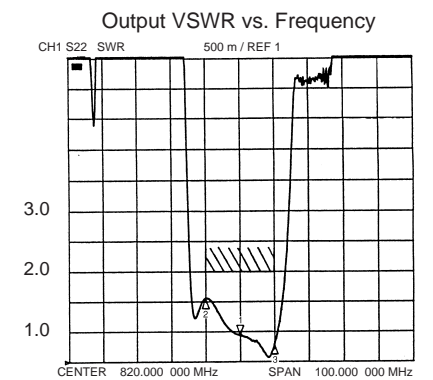
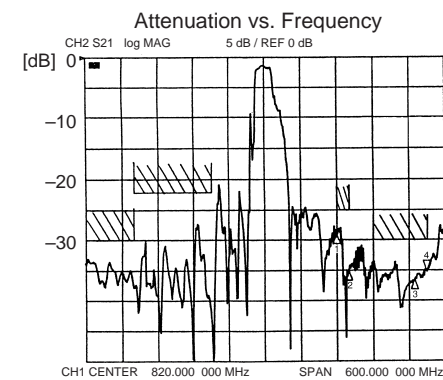
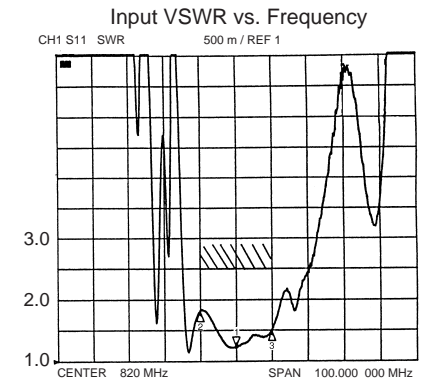
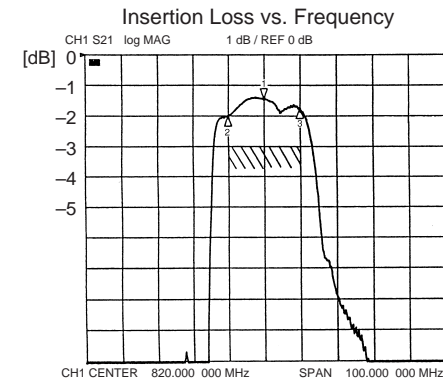
Parameter	MF1053S-2			Units
	Min	Typ	Max	
PASSBAND FREQUENCY	810 – 830			MHz
PASSBAND CHARACTERISTICS				
Insertion Loss		2.1	3.0	dB
Ripple		0.8	1.5	dBp-p
VSWR		1.9	2.5	
STOPBAND ATTENUATION				
0 – 600 MHz	30	33		dB
600 – 730 MHz	22	27		dB
940 – 960 MHz	25	28		dB
1000 – 1090 MHz	30	34		dB
1200 – 2500 MHz	23	27		dB

PACKAGE OUTLINE DIMENSIONS

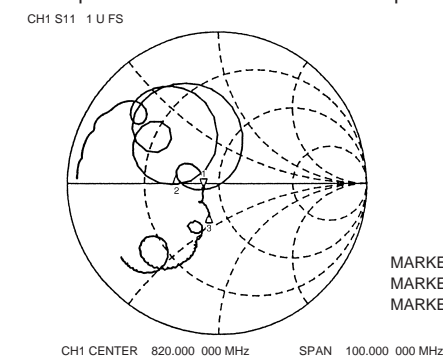


DIMENSIONS ARE IN MILLIMETERS
±0.2 UNLESS OTHERWISE SPECIFIED

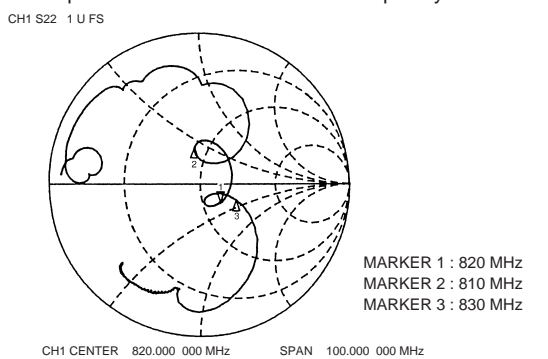
MF1053S-2 TYPICAL CHARACTERISTICS



Input Reflection Coefficient vs. Frequency



Output Reflection Coefficient vs. Frequency



Attenuation vs. Frequency

