

## Features

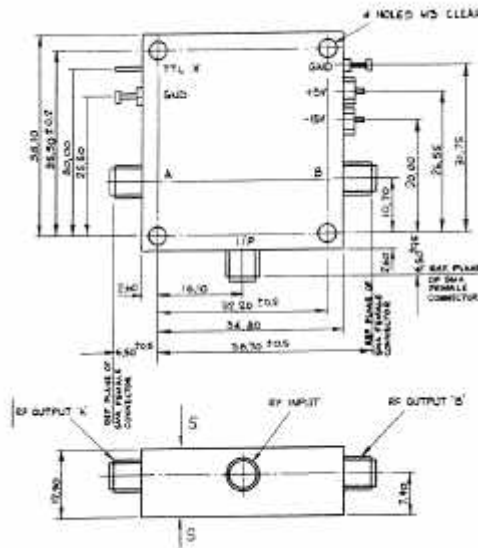
- Broad Band Frequency
- SMA Connectors
- Hermetically Sealed Housing
- Higher Input RF Power
- TTL Compatible
- Single TTL Control

## Description

This SPDT reflective switch offers a 2 W cw RF input power handling capability. It has a single TTL control to drive both channels. This switch has an integral TTL compatible driver. It is a proven design for harsh environments and is suitable for Airborne, Naval & Ground base applications.

## Other Mechanical

SMA Female connectors for RF ports and Solder pins for TTL & DC connections. This device is painted with black epoxy finish.



## Electrical Performance

(Applies over the frequency range @ +25 °C, output load impedance of 50 ohms. Unless otherwise stated limits & conditions are indicated values.)

Type	Frequency (GHz)	I/Loss max (dB)	Isolation min (dB)	R/Loss min (dB)	S. Speed max	I/P Power max (mw)	Logic	Power Supply V & mA	Dimensions (Ex-Con) mm	Operating Temp °C	Storage Temp °C
SPDT	6.4 - 18.0	3.85	52	7.4	10 micro second	2w (CW)	'0':I/P - Port B Low Loss TTL '1':I/P - Port A Low Loss	+5 -15 250 50	40.7x40.7x12.9	-40 to +85	-55 to +125

M/A-COM Inc. and its affiliates reserve the right to make changes to the product(s) or information contained herein without notice.

Visit [www.macom.com](http://www.macom.com) for additional data sheets and product information.

- North America: Tel. (800) 366-2266
- Asia/Pacific: Tel.+81-44-844-8296, Fax +81-44-844-8298
- Europe: Tel. +44 (1908) 574 200, Fax+44 (1908) 574 300