

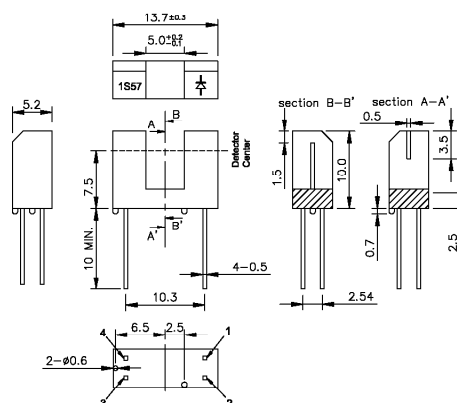
**Features**

1. Horizontal slit type
2. PWB direct mounting type
3. GAP between light emitter and detector : 5.0mm
4. Slit width : 0.5mm

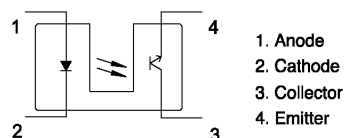
**Applications**

1. OA equipment, such as printer etc.
2. VCRs, cassette decks
3. Floppy disk drives
4. Optoelectronic Switches

**Outside Dimension:Unit (mm)**



**Schematic:Top View**



**Absolute Maximum Ratings**

(Ta=25°C)

	Parameter	Symbol	Rating	Unit
Input	Forward current	IF	50	mA
	Peak forward current *1	IFP	1	A
	Reverse voltage	VR	6	V
	Power dissipation	Pd	75	mW
Output	Collector-emitter voltage	VCEO	35	V
	Emitter-collector voltage	VECO	6	V
	Collector current	IC	20	mA
	Power dissipation	Pd	75	mW
	Total power dissipation	TPD	100	mW
	Operating temperature	TOPR	-25 to +85	°C
	Storage temperature	TSTG	-40 to +100	°C
	Soldering temperature *2	TSOL	260	°C

\*1 Pulse width ≤ 100 μs, duty ratio=1%

\*2 For 5 seconds

**Electro-optical Characteristics**

(Ta=25°C)

	Parameter	Symbol	Conditions	MIN.	TYP.	MAX.	Unit
Input	Forward voltage	VF	IF=20mA	—	1.25	1.4	V
	Peak forward voltage	VFM	IFM=0.5A	—	3	4	V
	Reverse current	IR	VR=3V	—	—	10	μA
Output	Collector-emitter dark current	ICEO	VCE=20V	—	1	100	nA
Transfer characteristics	Collector Current	IC	VCE=5V, IF=20mA	0.5	—	1.5	mA
	Collector saturation voltage	VCE(SET)	IF=40mA, IC=0.2mA	—	—	0.4	V
	Response time (Rise)	TR	VCE=2V, IC=2mA, RL=100Ω	—	3	15	μS
	Response time (Fall)	TF		—	4	20	μS

