



SAW Components

Data Sheet B4183





SAW Components

B4183

Low-Loss Filter for Mobile Communication

1962,5 MHz

Data sheet



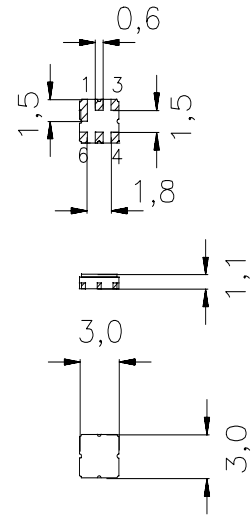
Features

- Low-loss RF filter for W-CDMA mobile telephone system, transmit path
- Unbalanced to balanced operation
- Usable passband 125MHz
- Ceramic Package for **Surface Mounted Technology (SMT)**

Terminals

- Ni, gold-plated

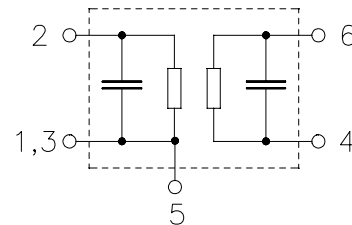
Ceramic package **DCC6D**



Dimensions in mm, approx. weight 0,037 g

Pin configuration

- | | |
|---------|-------------------|
| 2 | Input, unbalanced |
| 1, 3 | Input ground |
| 4, 6 | Output, balanced |
| 5 | To be grounded |
| 1, 3, 5 | Case ground |



Type	Ordering code	Marking and Package according to	Packing according to
B4183	B39202-B4183-U510	C61157-A7-A68	V61074-V8089-Z000

Electrostatic Sensitive Device (ESD)

Maximum ratings

Operable temperature range	T	- 30 / + 80	°C	Machine Model, 10 pulses
Storage temperature range	T_{stg}	- 40 / + 85	°C	
DC voltage	V_{DC}	3	V	
ESD voltage	V_{ESD}	50*	V	
Source power	P_{IN}	5	dBm	

* -acc. to JESD22-A115A (Machine Model), 10 negative & 10 positive pulses



Characteristics

Operating temperature range: $T = 25^{\circ}\text{C}$
 Terminating source impedance: $Z_S = 50 \Omega \parallel 3.9 \text{ nH}$
 Terminating load impedance: $Z_L = 200 \Omega \parallel 18.0 \text{ nH}$

		min.	typ.	max.	
Center frequency	f_c	—	1962,5	—	MHz
Maximum insertion attenuation	α_{max}				
	1900,0 ... 2025,0 MHz	—	3,8	4,2	dB
Amplitude ripple (p-p)	$\Delta\alpha$				
	1900,0 ... 2025,0 MHz	—	1,4	1,8	dB
Absolute attenuation	α_{abs}				
	0,0 ... 1600,0 MHz	30	35	—	dB
	1600,0 ... 1800,0 MHz	16	20	—	dB
	1800,0 ... 1880,0 MHz	5	10	—	dB
	2110,0 ... 6000,0 MHz	20	25	—	dB



SAW Components

B4183

Low-Loss Filter for Mobile Communication

1962,5 MHz

Data sheet



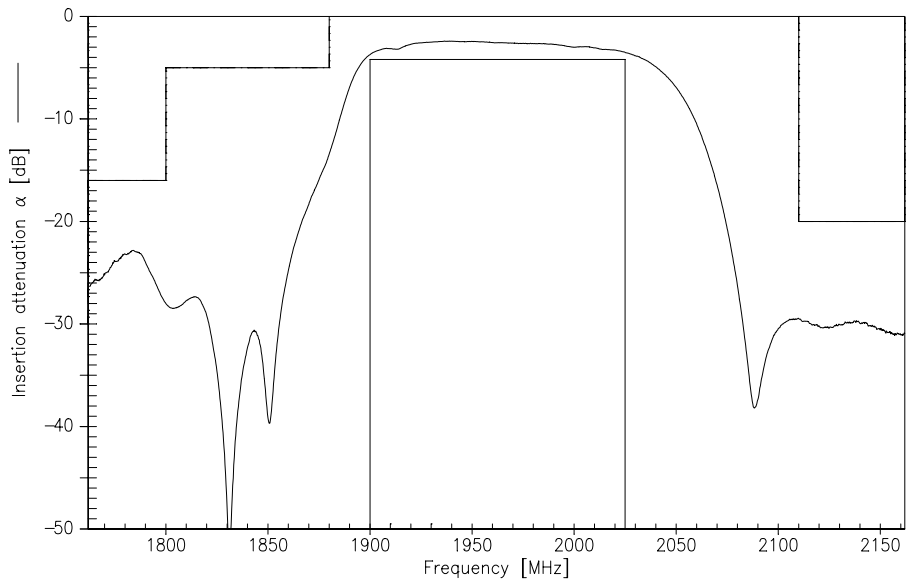
Characteristics

Operating temperature range: $T = -30 \dots +80^\circ \text{C}$
 Terminating source impedance: $Z_S = 50 \Omega \parallel 3.9 \text{ nH}$
 Terminating load impedance: $Z_L = 200 \Omega \parallel 18.0 \text{ nH}$

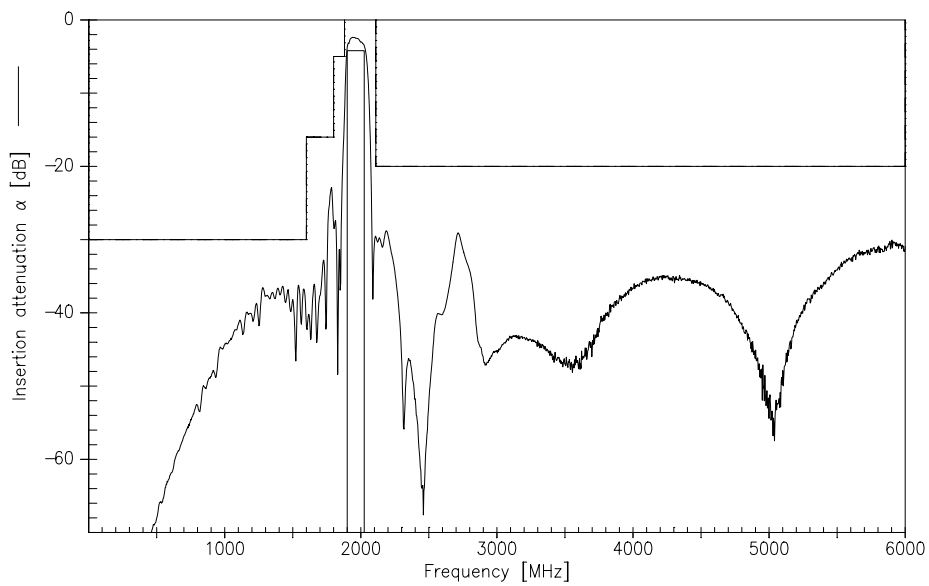
		min.	typ.	max.	
Center frequency	f_c	—	1962,5	—	MHz
Maximum insertion attenuation	α_{max}	—	4,2	4,8	dB
1900,0 ... 2025,0 MHz					
Amplitude ripple (p-p)	$\Delta\alpha$	—	1,8	2,4	dB
1900,0 ... 2025,0 MHz					
Absolute attenuation	α_{abs}				dB
0,0 ... 1600,0 MHz		30	35	—	
1600,0 ... 1800,0 MHz		16	20	—	
1800,0 ... 1880,0 MHz		5	10	—	
2110,0 ... 6000,0 MHz		20	25	—	



Transfer function (narrowband) :



Transfer function (wideband) :





SAW Components

B4183

Low-Loss Filter for Mobile Communication

1962,5 MHz

Data sheet



Published by EPCOS AG

Surface Acoustic Wave Components Division, SAW MC PD

P.O. Box 80 17 09, 81617 Munich, GERMANY

© EPCOS AG 2004. Reproduction, publication and dissemination of this brochure and the information contained therein without EPCOS' prior express consent is prohibited.

Purchase orders are subject to the General Conditions for the Supply of Products and Services of the Electrical and Electronics Industry recommended by the ZVEI (German Electrical and Electronic Manufacturers' Association), unless otherwise agreed.

This brochure replaces the previous edition.

For questions on technology, prices and delivery please contact the Sales Offices of EPCOS AG or the international Representatives.

Due to technical requirements components may contain dangerous substances. For information on the type in question please also contact one of our Sales Offices.