

VICOR CONFIDENTIAL

THIS DOCUMENT AND THE DATA DISCLOSED HEREIN OR HEREWITH IS NOT TO BE REPRODUCED, USED, OR DISCLOSED IN WHOLE OR IN PART TO ANYONE WITHOUT PERMISSION OF VICOR CORP.

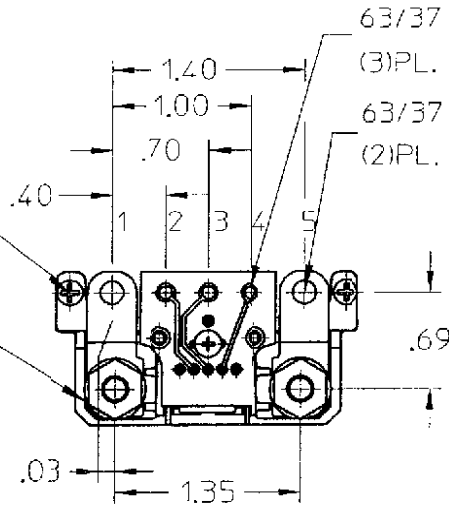
REV.	DESCRIPTION	DATE	APPROVED
#1	DRAWN FOR DEVELOPMENT	DMC 2/11/01	CFH
#2	REVISED PER MARKUP	DMC 6/3/02	CFH

#4 FILLISTER HEAD TORQUED TO 6 IN/LBS (2)PL.

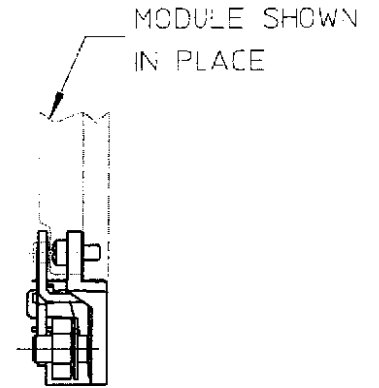
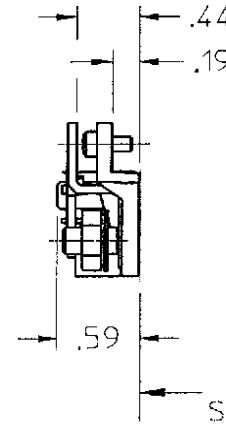
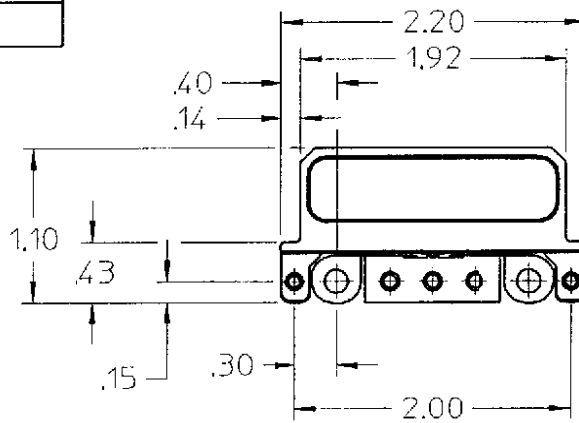
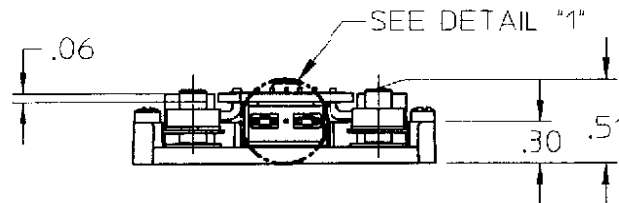
#10 HEX NUT TORQUED TO 16 IN/LBS (2)PL.

63/37 SN/PB SOLDER (3)PL.

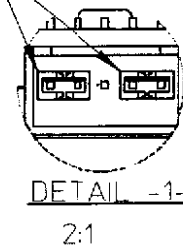
63/37 SN/PB SOLDER (2)PL.



PIN #	FUNCTION
1	+OUT
2	+SENSE OUT
3	TRIM
4	-SENSE OUT
5	-OUT



REMOVABLE JUMPERS TIE PINS 1 & 2 AND 4 & 5 TOGETHER



PRELIMINARY

JUN 03 2002 COPY

DRAWN BY	DATE				
	12/11/01				
UNLESS OTHERWISE SPECIFIED DIMENSIONS ARE IN INCHES - TOLERANCES ARE:					
FRACTIONS DECIMALS ANGLES					
= 1/64 .XX = .02 ± 1°					
.XXX = .010					
THIRD ANGLE PROJECTION		SIZE	FSCM NO.	DWG NO.	REV
		B	67131	24677	#2
DO NOT SCALE DRAWING		SCALE	1:1	SHEET 1 OF 1	