

## FSAV430

### Low Voltage Ultra Low Power High Bandwidth (1.1GHz) Quad SPDT Video Switch

#### General Description

FSAV430 is a high performance Quad SPDT (2-to-1 multiplexer/demultiplexer) video switch designed specifically for switching high definition YPbPr and computer RGB (up to UXGA) signals. The bandwidth of this device is 1.1GHz (Typ) which allows signals to pass with minimal edge and phase distortion. Image integrity is maintained with low crosstalk, high OFF-Isolation and low differential gain and phase. The low On Resistance (4.5Ω typical) minimizes signal insertion loss. Low voltage operation (3V), low power consumption (1uA maximum) and small scale packaging (including leadless DQFN) make this device ideal for a broad range of applications.

#### Features

- -50dB OFF Isolation at 10MHz
- -75dB non-adjacent channel crosstalk at 10MHz
- 4.5Ω typical On Resistance ( $R_{ON}$ )
- -3dB bandwidth: 1.1GHz
- Low power consumption (1uA max)
- Control input: TTL compatible
- Bidirectional operation

#### Applications

- RGB Video Switch in LCD, plasma and projection displays
- DVD-RW

#### Ordering Code:

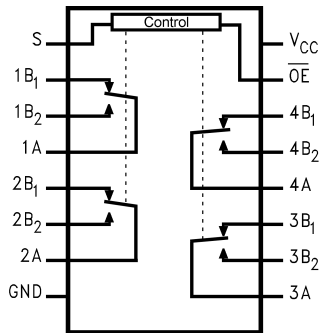
Order Number	Package Number	Package Description
FSAV430BQX (Note 1) (Preliminary)	MLP016E	16-Terminal Depopulated Quad Very-Thin Flat Pack No Leads (DQFN), JEDEC MO-241, 2.5 x 3.5mm
FSAV430QSC	MQA16	16-Lead Quarter Size Outline Package (QSOP), JEDEC MO-137, 0.150" Wide
FSAV430MTC	MTC16	16-Lead Thin Shrink Small Outline Package (TSSOP), JEDEC MO-153, 4.4mm Wide

Devices also available in Tape and Reel. Specify by appending suffix letter "X" to the ordering code.

**Note 1:** DQFN package available in Tape and Reel only.

FSAV430 Low Voltage Ultra Low Power High Bandwidth (1.1GHz) Quad SPDT Video Switch

**Analog Symbol**

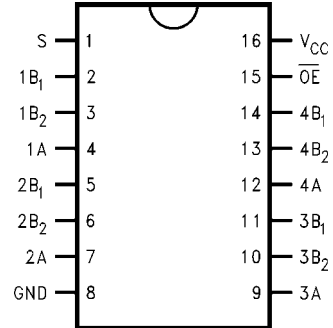


**Pin Descriptions**

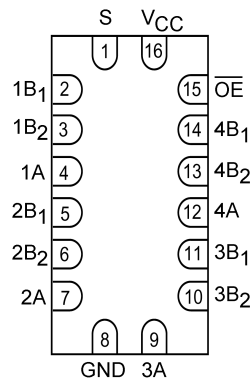
Pin Name	Description
$\overline{OE}$	Bus Switch Enable
S	Select Input
A	Bus A
B <sub>1</sub> -B <sub>2</sub>	Bus B

**Connection Diagrams**

Pin Assignments for QSOP and TSSOP



Pad Assignments for DQFN



**Truth Table**

S	$\overline{OE}$	Function
X	H	Disconnect
L	L	A = B <sub>1</sub>
H	L	A = B <sub>2</sub>

Absolute Maximum Ratings (Note 2)		Recommended Operating Conditions (Note 4)	
Supply Voltage ( $V_{CC}$ )	-0.5V to +4.6V	Power Supply Operating ( $V_{CC}$ )	3.0V to 3.6V
DC Switch Voltage ( $V_S$ )	-0.5V to $V_{CC} + 0.05V$	Input Voltage ( $V_{IN}$ )	0V to $V_{CC}$
DC Input Voltage ( $V_{IN}$ ) (Note 3)	-0.5V to +4.6V	Output Voltage ( $V_{OUT}$ )	0V to $V_{CC}$
DC Input Diode Current ( $I_{IK}$ ) $V_{IN} < 0V$	-50 mA	Input Rise and Fall Time ( $t_r, t_f$ )	
DC Output ( $I_{OUT}$ ) Sink Current	128 mA	Switch Control Input	0 ns/V to 5 ns/V
DC $V_{CC}/GND$ Current ( $I_{CC}/I_{GND}$ )	$\pm 100$ mA	Switch I/O	0 ns/V to DC
Storage Temperature Range ( $T_{STG}$ )	-65°C to +150 °C	Free Air Operating Temperature ( $T_A$ )	-40 °C to +85 °C
ESD			
Human Body Model	4kV		

**Note 2:** The Absolute Maximum Ratings are those values beyond which the safety of the device cannot be guaranteed. The device should not be operated at these limits. The parametric values defined in the Electrical Characteristics tables are not guaranteed at the absolute maximum rating. The Recommended Operating Conditions tables will define the conditions for actual device operation.

**Note 3:** The input and output negative voltage ratings may be exceeded if the input and output diode current ratings are observed.

**Note 4:** Unused control inputs must be held HIGH or LOW. They may not float.

### DC Electrical Characteristics

Symbol	Parameter	$V_{CC}$ (V)	$T_A = -40\text{ }^\circ\text{C to } +85\text{ }^\circ\text{C}$			Units	Conditions
			Min	Typ (Note 5)	Max		
	Analog Signal Range		0		2.0	V	
$V_{IK}$	Clamp Diode Voltage	3.0			-1.2	V	$I_{IN} = -18\text{ mA}$
$V_{IH}$	HIGH Level Input Voltage	3.0 - 3.6	2.0			V	
$V_{IL}$	LOW Level Input Voltage	3.0 - 3.6			0.8	V	
$I_I$	Input Leakage Current	3.6			$\pm 1.0$	$\mu\text{A}$	$0 \leq V_{IN} \leq 3.6V$
$I_{OFF}$	OFF-STATE Leakage Current	3.6			$\pm 1.0$	$\mu\text{A}$	$0 \leq A, B \leq V_{CC}$
$R_{ON}$	Switch On Resistance (Note 6)	3.0		5.0	7.0	$\Omega$	$V_{IN} = 1.0V$ $R_I = 75\ \Omega, I_{ON} = 13\text{ mA}$
		3.0		4.5	6.0	$\Omega$	$V_{IN} = 2.0V$ $R_I = 75\ \Omega, I_{ON} = 26\text{ mA}$
$R_{FLAT(ON)}$	On Resistance Flatness (Note 7)	3.0		1.0		$\Omega$	$I_{OUT} = 13\text{ mA}, V_{IN} = 0\text{ to } V_{CC}$
$I_{CC}$	Quiescent Supply Current	3.6			1.0	$\mu\text{A}$	$V_{IN} = V_{CC}\text{ or } GND, I_{OUT} = 0$
$\Delta I_{CC}$	Increase in $I_{CC}$ per Input	3.6			30.0	$\mu\text{A}$	One Input at 3.0V Other Inputs at $V_{CC}$ or GND

**Note 5:** Typical values are at  $T_A = +25^\circ\text{C}$

**Note 6:** Measured by the voltage drop between A and B pins at the indicated current through the switch. On Resistance is determined by the lower of the voltages on the two (A or B) pins.

**Note 7:** Flatness is defined as the difference between the maximum and minimum value On Resistance over the specified range of conditions.

## AC Electrical Characteristics

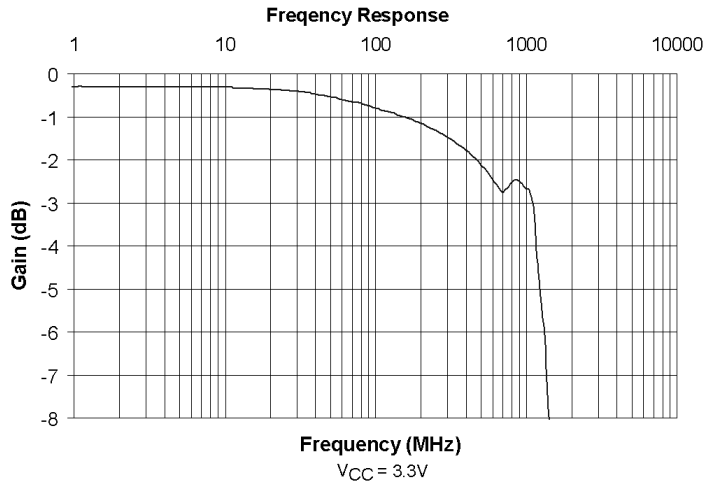
Symbol	Parameter	V <sub>CC</sub> (V)	T <sub>A</sub> = -40°C to +85°C			Units	Conditions	Figure Number
			Min	Typ (Note)	Max			
t <sub>ON</sub>	Turn ON Time S-to-Bus A	3.0 to 3.6		4.8	7.0	ns	B <sub>n</sub> = 2.0V	Figures 8, 9
	Output Enable Time OE-to-A	3.0 to 3.6		4.5	6.8			
t <sub>OFF</sub>	Turn OFF Time S-to-Bus A	3.0 to 3.6		2.2	4.0	ns	B <sub>n</sub> = 2.0V	Figures 8, 9
	Output Disable Time OE-to-A	3.0 to 3.6		2.2	4.0			
DG	Differential Gain	3.0 to 3.6		0.2		%	R <sub>L</sub> = 75Ω, f = 3.58MHz	Figures 2, 3
DP	Differential Phase	3.0 to 3.6		0.1		Degree	R <sub>L</sub> = 75Ω, f = 3.58MHz	Figures 2, 3
O <sub>IRR</sub>	Non-Adjacent OFF-Isolation	3.0 to 3.6		-50.0		dB	f = 10MHz, R <sub>L</sub> = 75Ω	Figures 4, 10
X <sub>TALK</sub>	Non-Adjacent Channel Crosstalk	3.0 to 3.6		-75.0		dB	R <sub>L</sub> = 75Ω, f = 10MHz	Figures 5, 11
BW	-3dB Bandwidth	3.0 to 3.6		1.1		GHz	R <sub>L</sub> = 75Ω	Figures 1, 12

**Note 8:** Typical values are at V<sub>CC</sub> = 3.3V and T<sub>A</sub> = +25°C

## Capacitance

Symbol	Parameter	T <sub>A</sub> = -40°C to +85°C		Units	Conditions
		Typ (Note)			
C <sub>IN</sub>	Control Pin Input Capacitance	2.5		pF	V <sub>CC</sub> = 0V
C <sub>ON</sub>	A/B ON Capacitance	12.0		pF	V <sub>CC</sub> = 3.3V, OE = 0V
C <sub>OFF</sub>	Port B OFF Capacitance	4.0		pF	V <sub>CC</sub> and OE = 3.3V

**Note 9:** Typical values are at V<sub>CC</sub> = 3.3V and T<sub>A</sub> = +25°C



**FIGURE 1. Gain vs. Frequency**

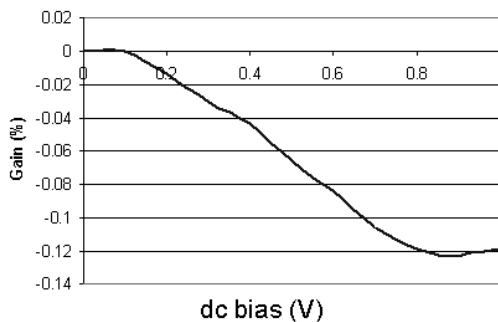


FIGURE 2. Differential Gain vs. dc bias

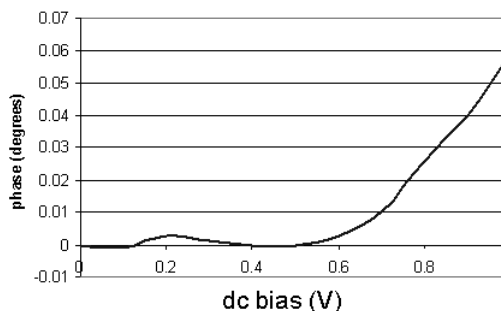


FIGURE 3. Differential Phase vs. dc bias

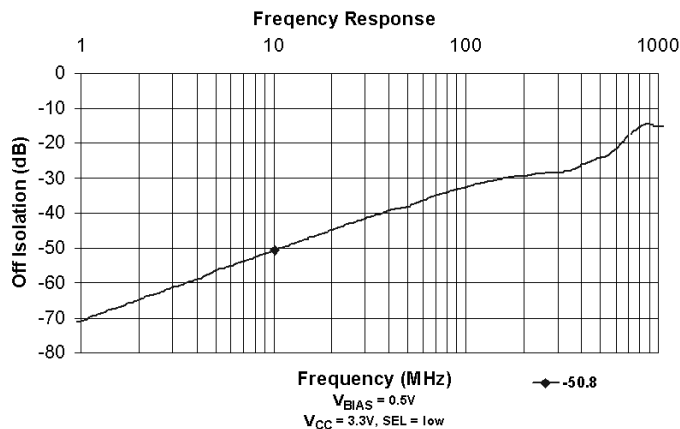


FIGURE 4. OFF Isolation

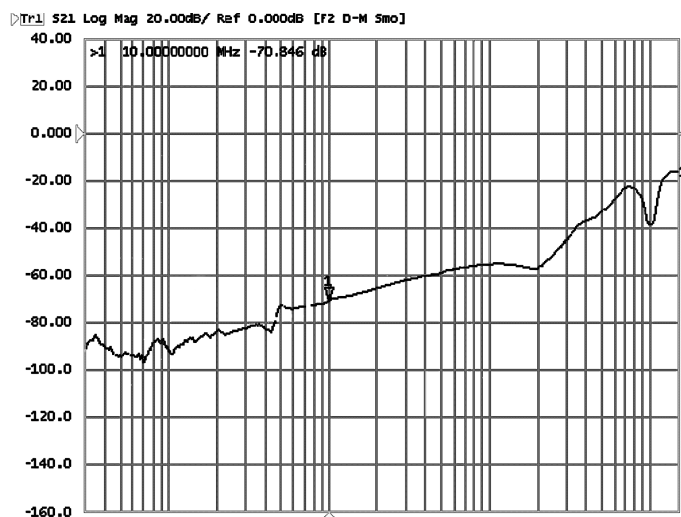


FIGURE 5. OFF Crosstalk vs. Frequency

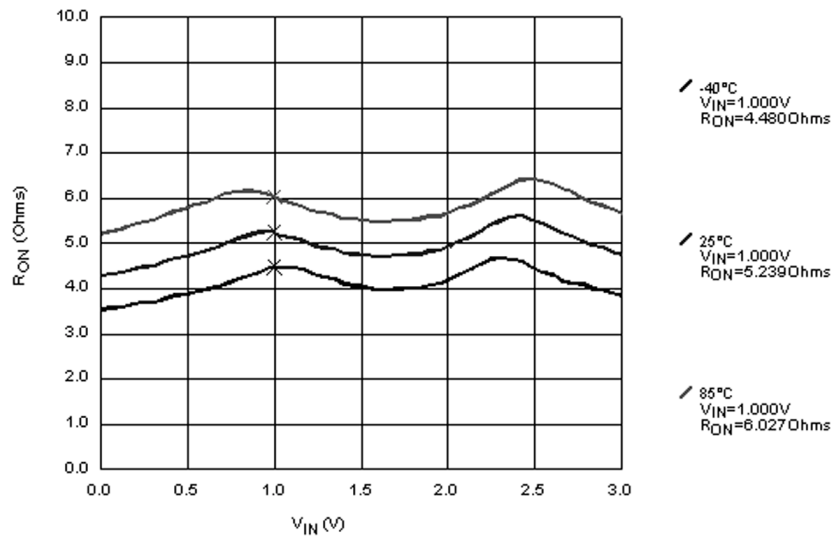


FIGURE 6. RON Switch On Resistance, ION = 13mA, VCC = 3.0V

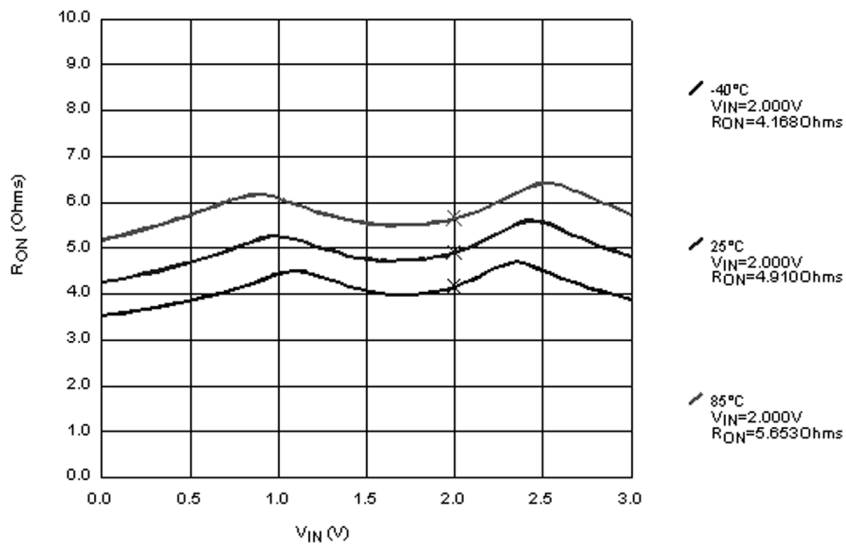
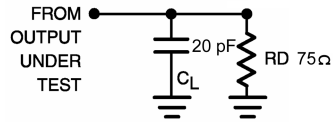


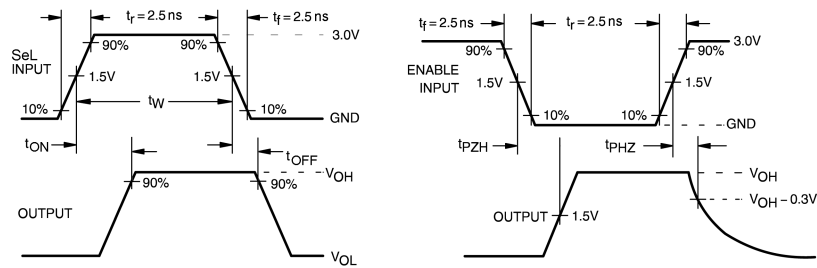
FIGURE 7. RON Switch On Resistance, ION = 26mA, VCC = 3.0V

## AC Loading and Waveforms

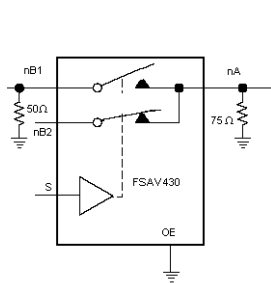


**Note:** Input driven by 50 Ω source terminated in 50 Ω  
**Note:**  $C_L$  includes load and stray capacitance  
**Note:** Input PRR = 1.0 MHz,  $t_W = 500$  ns

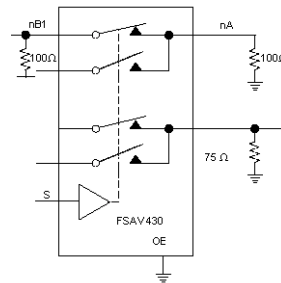
**FIGURE 8. AC Test Circuit**



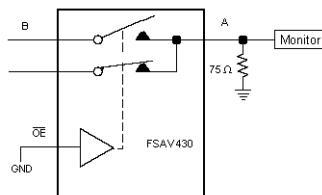
**FIGURE 9. AC Waveforms**



**FIGURE 10. OFF Isolation Test**



**FIGURE 11. Crosstalk Test**



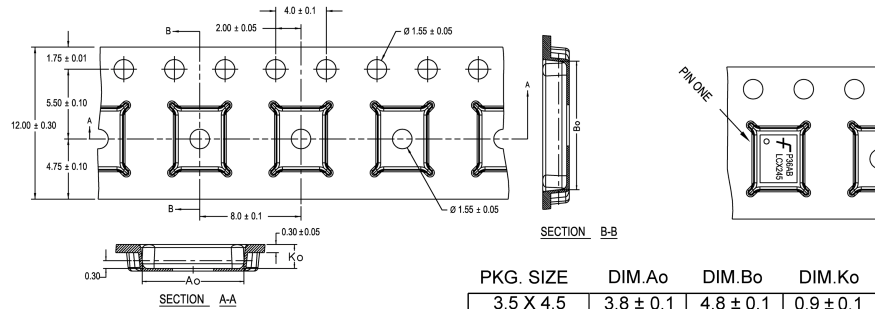
**FIGURE 12. Bandwidth Test**

## Tape and Reel Specification

### Tape Format for DQFN

Package Designator	Tape Section	Number Cavities	Cavity Status	Cover Tape Status
BQ/BQX	Leader (Start End)	125 (typ)	Empty	Sealed
	Carrier	2500/3000	Filled	Sealed
	Trailer (Hub End)	75 (typ)	Empty	Sealed

### TAPE DIMENSIONS inches (millimeters)



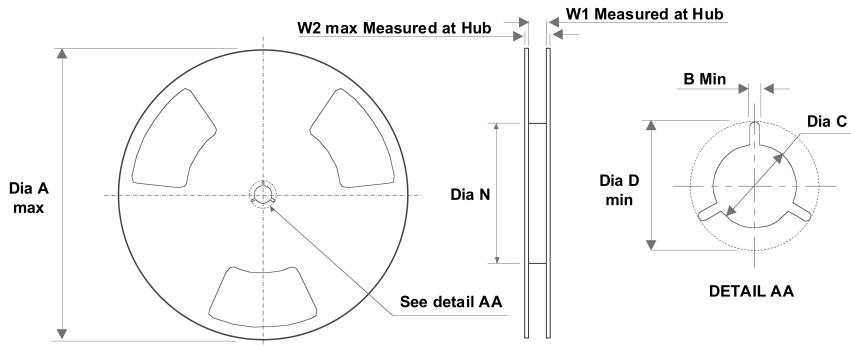
PKG. SIZE	DIM.Ao	DIM.Bo	DIM.Ko
3.5 X 4.5	3.8 ± 0.1	4.8 ± 0.1	0.9 ± 0.1
3.0 X 3.0	3.3 ± 0.1	3.3 ± 0.1	0.9 ± 0.1
2.5 X 4.5	2.8 ± 0.1	4.8 ± 0.1	0.9 ± 0.1
2.5 X 3.5	2.8 ± 0.1	3.8 ± 0.1	0.9 ± 0.1
2.5 X 3.0	2.8 ± 0.1	3.3 ± 0.1	0.9 ± 0.1
2.5 X 2.5	2.8 ± 0.1	2.8 ± 0.1	0.9 ± 0.1

DIMENSIONS ARE IN MILLIMETERS

NOTES: unless otherwise specified

1. Cumulative pitch for feeding holes and cavities (chip pockets) not to exceed 0.008[0.20] over 10 pitch span.
2. Smallest allowable bending radius.
3. Thru hole inside cavity is centered within cavity.
4. Tolerance is ±0.002[0.05] for these dimensions on all 12mm tapes.
5. Ao and Bo measured on a plane 0.120[0.30] above the bottom of the pocket.
6. Ko measured from a plane on the inside bottom of the pocket to the top surface of the carrier.
7. Pocket position relative to sprocket hole measured as true position of pocket. Not pocket hole.
8. Controlling dimension is millimeter. Dimension in inches rounded.

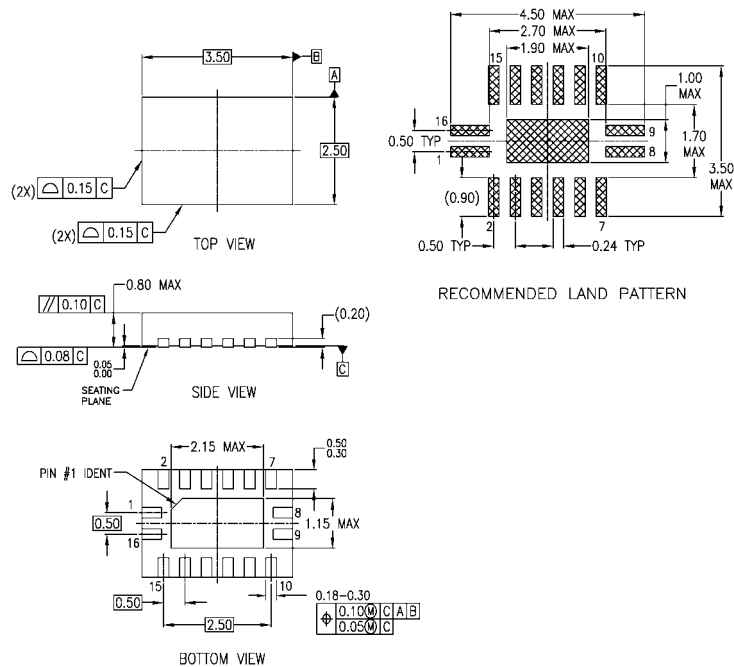
### REEL DIMENSIONS inches (millimeters)



Tape Size	A	B	C	D	N	W1	W2
12 mm	13.0 (330)	0.059 (1.50)	0.512 (13.00)	0.795 (20.20)	7.008 (178)	0.488 (12.4)	0.724 (18.4)



**Physical Dimensions** inches (millimeters) unless otherwise noted



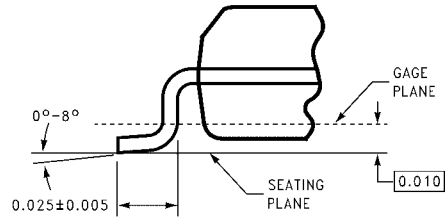
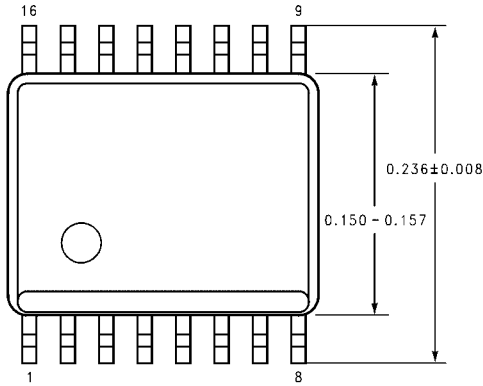
NOTES:

- A. CONFORMS TO JEDEC REGISTRATION MO-241, VARIATION AB
- B. DIMENSIONS ARE IN MILLIMETERS.
- C. DIMENSIONS AND TOLERANCES PER ASME Y14.5M, 1994

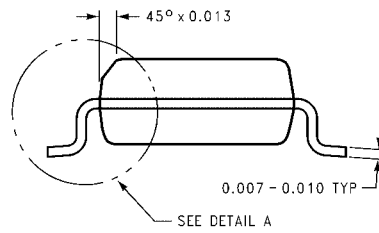
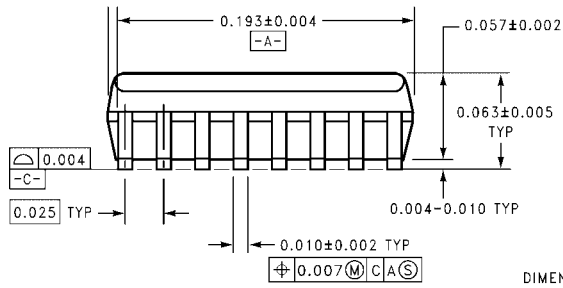
MLP016ErevA

**16-Terminal Depopulated Quad Very-Thin Flat Pack No Leads (DQFN), JEDEC MO-241, 2.5 x 3.5mm Package Number MLP016E**

**Physical Dimensions** inches (millimeters) unless otherwise noted (Continued)



DETAIL A  
TYPICAL, SCALE: 40%

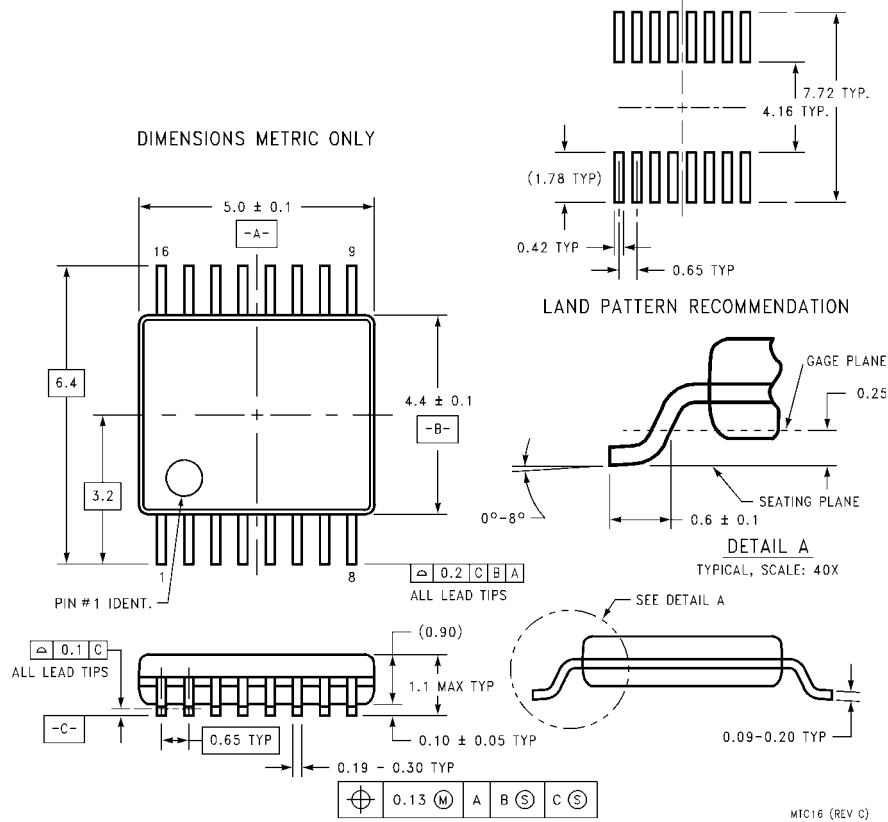


DIMENSIONS ARE IN INCHES

MQA16 (REV A)

**16-Lead Quarter Size Outline Package (QSOP), JEDEC MO-137, 0.150" Wide  
Package Number MQA16**

**Physical Dimensions** inches (millimeters) unless otherwise noted (Continued)



**16-Lead Thin Shrink Small Outline Package (TSSOP), JEDEC MO-153, 4.4mm Wide  
Package Number MTC16**

**Technology Description**

The Fairchild Switch family derives from and embodies Fairchild's proven switch technology used for several years in its 74LVX3L384 (FST3384) bus switch product.

Fairchild does not assume any responsibility for use of any circuitry described, no circuit patent licenses are implied and Fairchild reserves the right at any time without notice to change said circuitry and specifications.

**LIFE SUPPORT POLICY**

FAIRCHILD'S PRODUCTS ARE NOT AUTHORIZED FOR USE AS CRITICAL COMPONENTS IN LIFE SUPPORT DEVICES OR SYSTEMS WITHOUT THE EXPRESS WRITTEN APPROVAL OF THE PRESIDENT OF FAIRCHILD SEMICONDUCTOR CORPORATION. As used herein:

1. Life support devices or systems are devices or systems which, (a) are intended for surgical implant into the body, or (b) support or sustain life, and (c) whose failure to perform when properly used in accordance with instructions for use provided in the labeling, can be reasonably expected to result in a significant injury to the user.
2. A critical component in any component of a life support device or system whose failure to perform can be reasonably expected to cause the failure of the life support device or system, or to affect its safety or effectiveness.

[www.fairchildsemi.com](http://www.fairchildsemi.com)