

XLM-Printed Circuit Board

Features

- P. C. B. mount type (Metal shell)
- Glass-filled nylon insulator (UL94V-0)
- Improved EMI Shielding
- Space-saving (smaller shell)
- Snap-in P. C. B. retention
- Quick disconnect latch lock
- Separate ground contact
- Intermateable with XLB2, XLR, XLA, XLG
- With Grounding Lug

Application

- Amplifiers
- Test Instruments
- Equalizers
- Computers
- Audio mixers
- Medical Electronics
- Communications
- Peripheral Devices

Standard Data

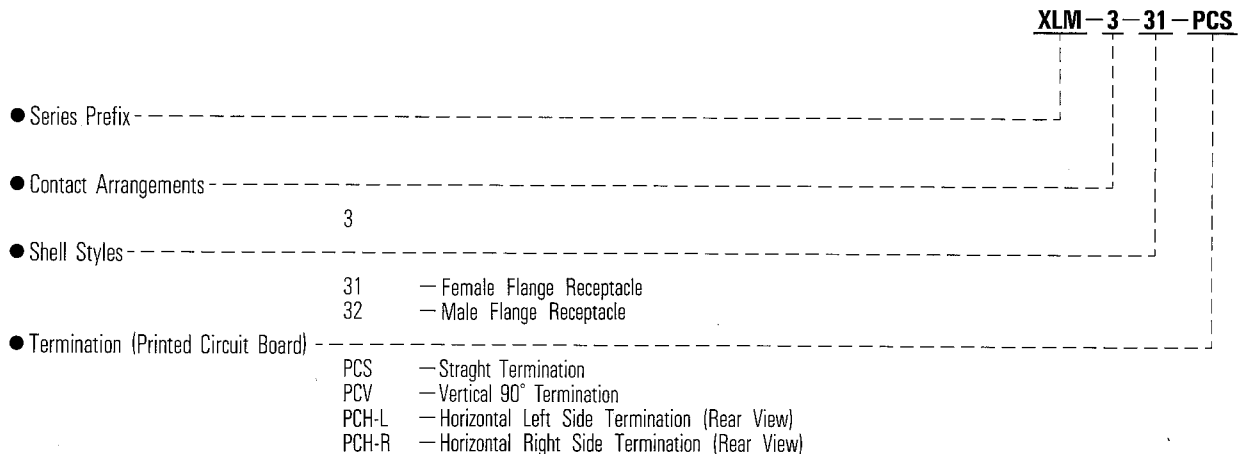
Specifications(Detail p4)

Rated Current	3A
Service Voltage	133VAC
Dielectric Withstanding Voltage	1400VAC
Insulation Resistance	5000Ωmin. at 500VDC
Contact Resistance	PCS : 20mΩMAX PCV : 30mΩMAX PCH : 50mΩMAX

Materials(Finishes)

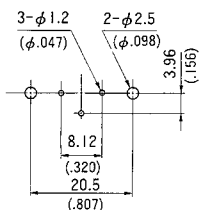
Contacts	Copper Alloy(silver)
Insulator Socket	PBT Glass-filled
Pin	Nylon
Shell/Barrel	Zinc Alloy(Nickel)

How To Order

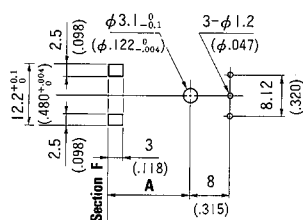


P.C. Board Hole Patterns.(Ref.)

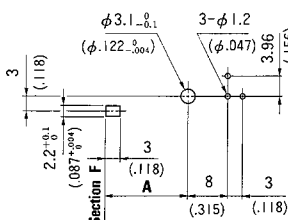
XLM-3-31PCS
XLM-3-32PCS



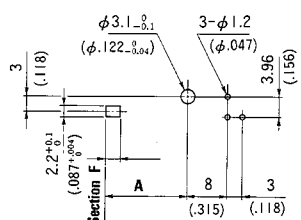
XLM-3-31PCV
XLM-3-32PCV



XLM-3-31PCH-L
XLM-3-32PCH-L



XLM-3-31PCH-R
XLM-3-32PCH-R



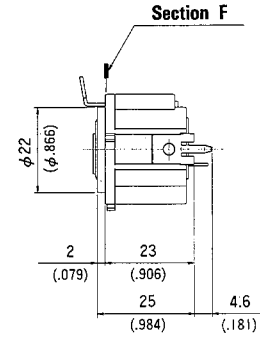
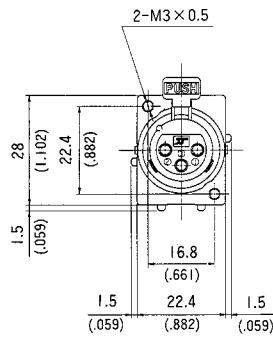
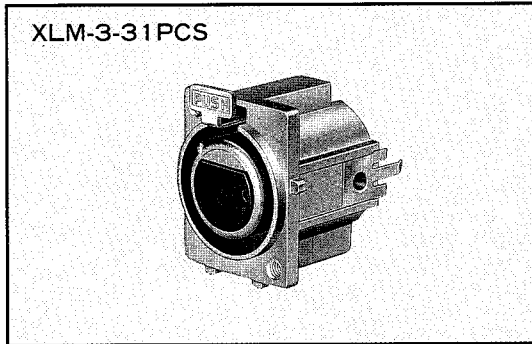
	A mm(inch)
XLM-3-31	16.5 (.650)
XLM-3-32	15.5 (.610)

※ Section F refers to position of Flange front face.

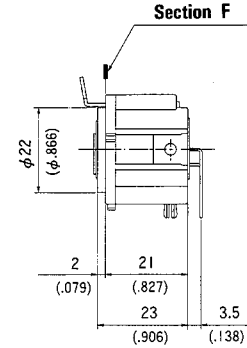
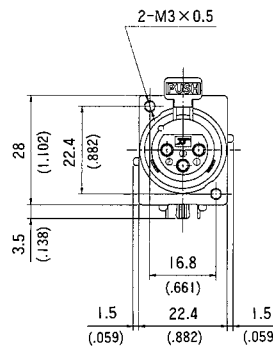
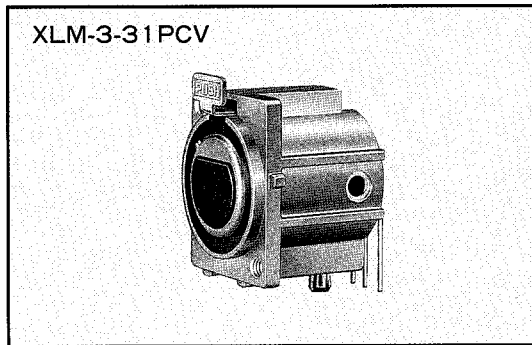
XLM-Printed Circuit Board

Female Flange Receptacles

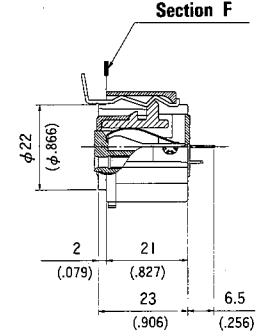
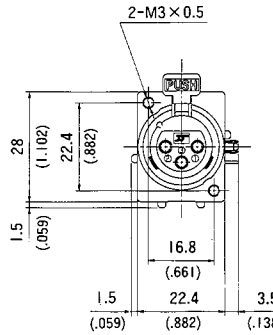
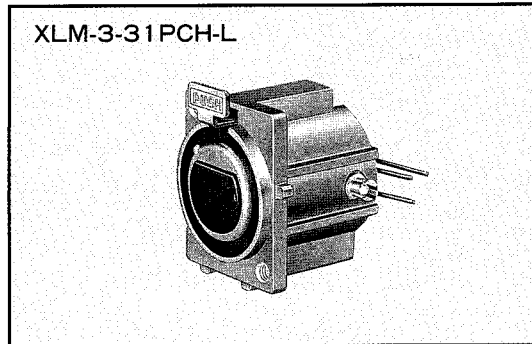
Straight Termination



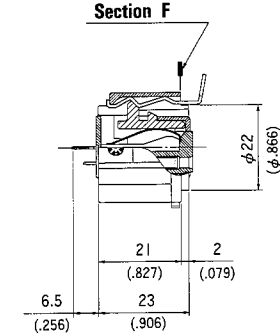
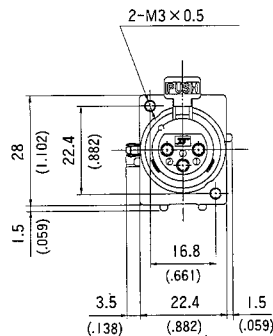
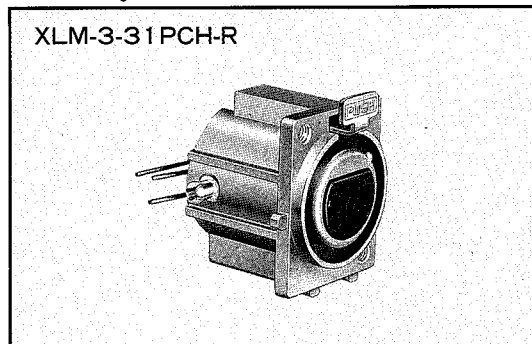
Vertical 90° Termination



Horizontal Left Side Termination (Rear View)



Horizontal Right Side Termination (Rear View)

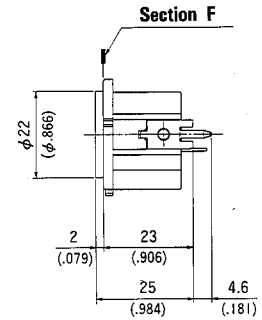
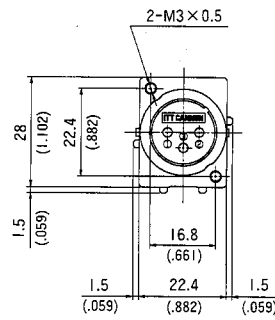
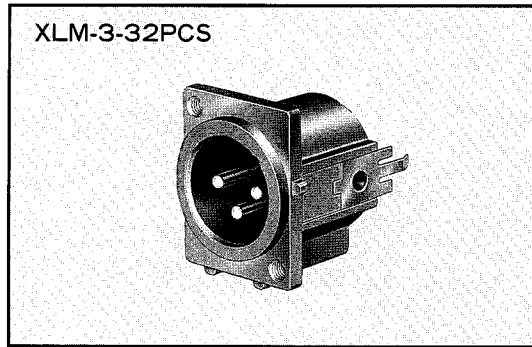


※ **Section F** refers to position of Flange front face.

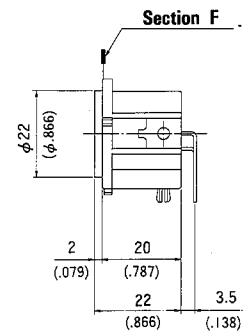
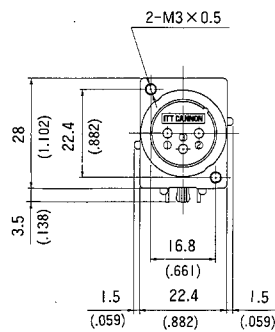
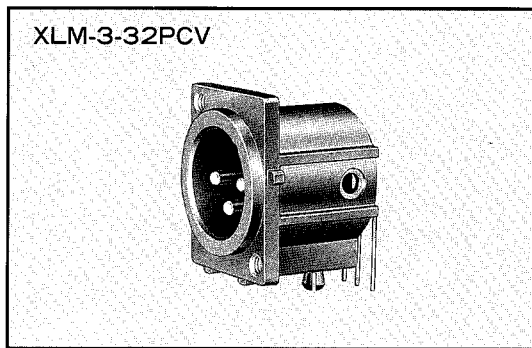
XLM-Printed Circuit Board

Male Flange Receptacles

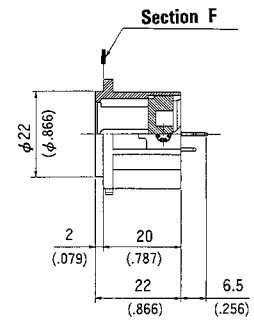
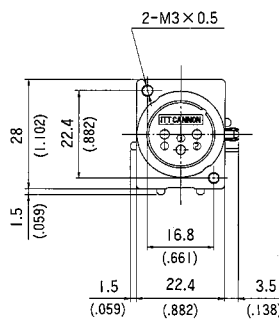
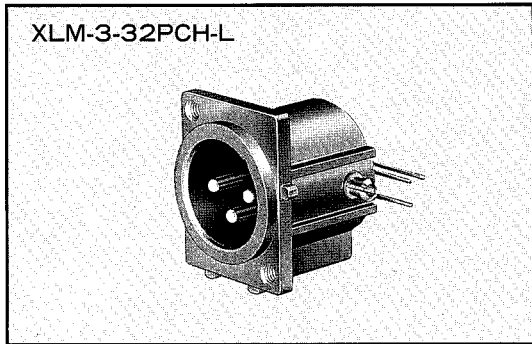
Straight Termination



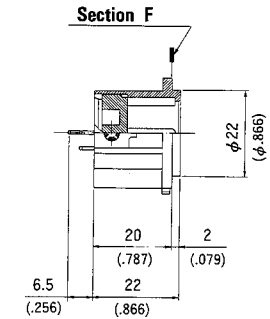
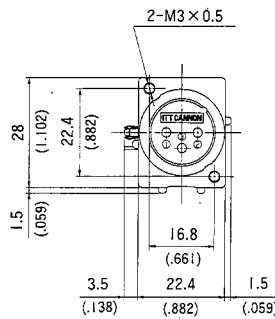
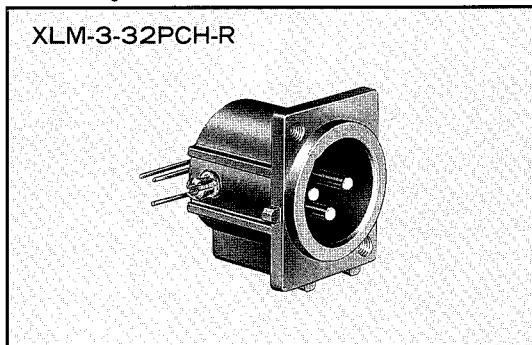
Vertical 90° Termination



Horizontal Left Side Termination (Rear View)



Horizontal Right Side Termination (Rear View)



※ Section F refers to position of Flange front face.